



EMLabel Driver Installation Instruction Manual

一、Install the printed driver:

1、Download "EMLabel Driver" on the official website.

2、USB driver installation

(1) Select USB port and printer type

(2) Choose the size according to the labeling machine model

Install Label Printer Driver

You are using Windows 10 x64 OS.
Please select Windows 10 to install.

Select Windows OS

☐ Windows XP ☐ Windows Vista
☐ Windows 2003 ☐ Windows 8/8.1
☐ Windows 7 ☒ Windows 10
☐ Windows 11

Port Check

USB001

Printer Interface :

1. ☒ USB ☐ COM ☐ LAN ☐ BLE

Label printer

2. ☒ EML-400L (4inch) ☐ EML-300L (3inch)
☐ EML-200L (2inch)

Check Port

PrintSelftest

Install Driver

☐ Set Default Printer

English

(3) Click Start Installation

Install Label Printer Driver

You are using Windows 10 x64 OS.
Please select Windows 10 to install.

Select Windows OS

☐ Windows XP ☐ Windows Vista
☐ Windows 2003 ☐ Windows 8/8.1
☐ Windows 7 ☒ Windows 10
☐ Windows 11

Port Check

USB001

Printer Interface :

☒ USB ☐ COM ☐ LAN ☐ BLE

Label printer

☒ EML-400L (4inch) ☐ EML-300L (3inch)
☐ EML-200L (2inch)

Check Port

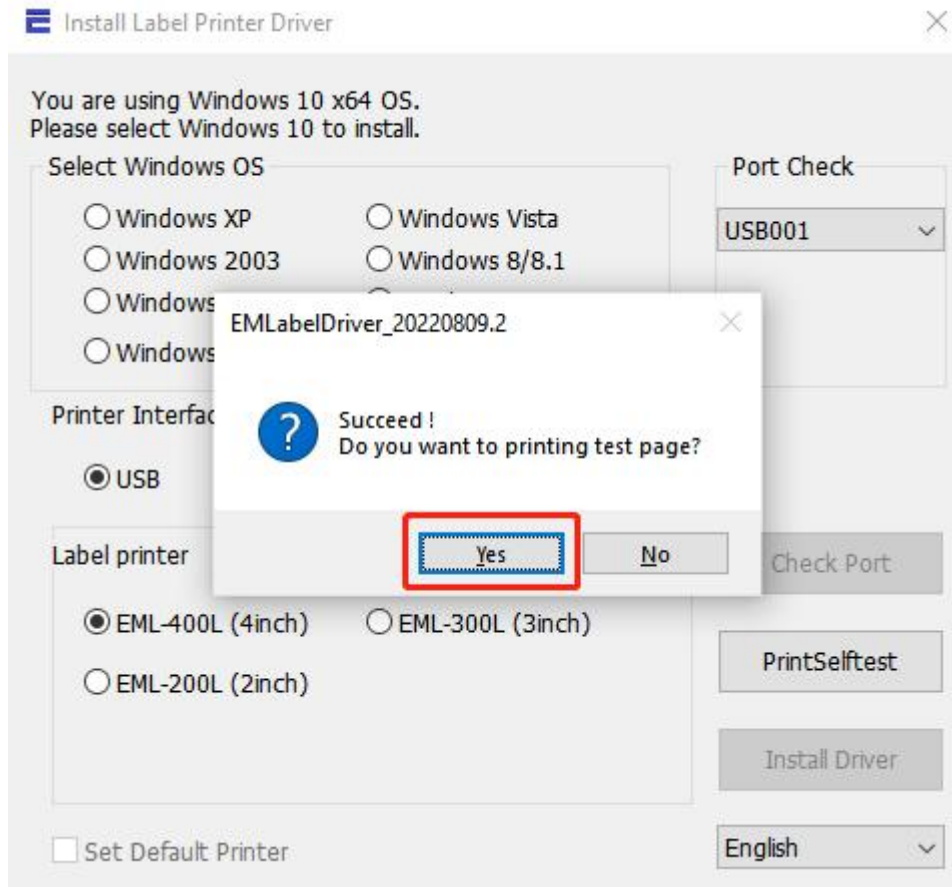
PrintSelftest

Install Driver

☐ Set Default Printer

English

(4) Select YES to print the self page and check the printer driver name



(5) Installation is completed

3、Serial port driver installation

(1) Select Serial port and printer type

(2) Choose the size according to the labeling machine model

(3) Select the baud rate(default is 19200,check the printer

baud rate:self-test page-serial config)

Install Label Printer Driver ✕

You are using Windows 10 x64 OS.
Please select Windows 10 to install.

Select Windows OS

<input type="radio"/> Windows XP	<input type="radio"/> Windows Vista
<input type="radio"/> Windows 2003	<input type="radio"/> Windows 8/8.1
<input type="radio"/> Windows 7	<input checked="" type="radio"/> Windows 10
<input type="radio"/> Windows 11	

Port Check

3.

Printer Interface :

☐ USB 1. ☒ COM ☐ LAN ☐ BLE 4.

Label printer

2. ☒ EML-400L (4inch) ☐ EML-300L (3inch)

☐ EML-200L (2inch)

☐ Set Default Printer

English

(4) Click Start Installation

Install Label Printer Driver ✕

You are using Windows 10 x64 OS.
Please select Windows 10 to install.

Select Windows OS

<input type="radio"/> Windows XP	<input type="radio"/> Windows Vista
<input type="radio"/> Windows 2003	<input type="radio"/> Windows 8/8.1
<input type="radio"/> Windows 7	<input checked="" type="radio"/> Windows 10
<input type="radio"/> Windows 11	

Port Check

COM1 ▼

Printer Interface :

☐ USB ☒ COM ☐ LAN ☐ BLE

19200 ▼

Label printer

☒ EML-400L (4inch) ☐ EML-300L (3inch)

☐ EML-200L (2inch)

Check Port

PrintSelftest

Install Driver

☐ Set Default Printer

English ▼

(5) Select YES to print the test page and check the printer driver name



(6) Installation is completed

4、LAN port driver installation

(1) Select LAN port and printer type

(2) Choose the size according to the labeling machine model

Install Label Printer Driver ✕

You are using Windows 10 x64 OS.
Please select Windows 10 to install.

Select Windows OS

<input type="radio"/> Windows XP	<input type="radio"/> Windows Vista
<input type="radio"/> Windows 2003	<input type="radio"/> Windows 8/8.1
<input type="radio"/> Windows 7	<input checked="" type="radio"/> Windows 10
<input type="radio"/> Windows 11	

Port Check

3.

Printer Interface :

☐ USB ☐ COM1. ☒ LAN ☐ BLE 4.

Label printer

2. ☒ EML-400L (4inch) ☐ EML-300L (3inch)

☐ EML-200L (2inch)

☐ Set Default Printer

English ▼

(3) Click Start Installation

Install Label Printer Driver

You are using Windows 10 x64 OS.
Please select Windows 10 to install.

Select Windows OS

☐ Windows XP ☐ Windows Vista
☐ Windows 2003 ☐ Windows 8/8.1
☐ Windows 7 ☒ Windows 10
☐ Windows 11

Port Check

192.168.3.109

Printer Interface :

☐ USB ☐ COM ☒ LAN ☐ BLE

192 . 168 . 3 . 109

Label printer

☒ EML-400L (4inch) ☐ EML-300L (3inch)
☐ EML-200L (2inch)

Check Port

PrintSelftest

Install Driver

☐ Set Default Printer

English

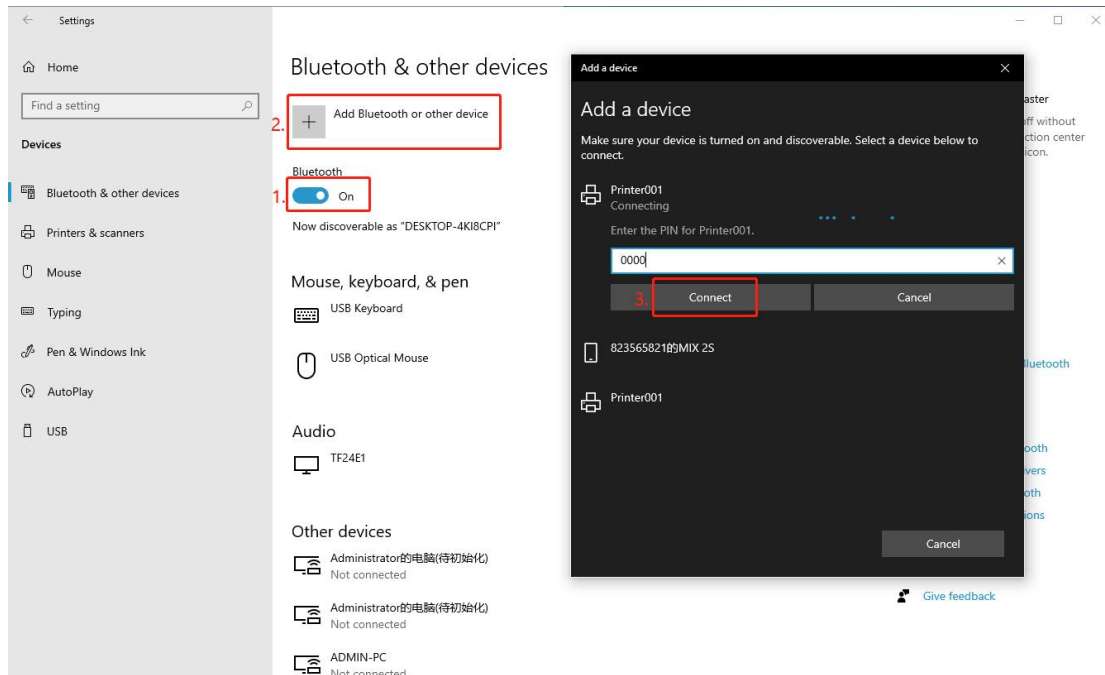
(4) Select YES to print the test page and check the printer driver name



(5) Installation is completed

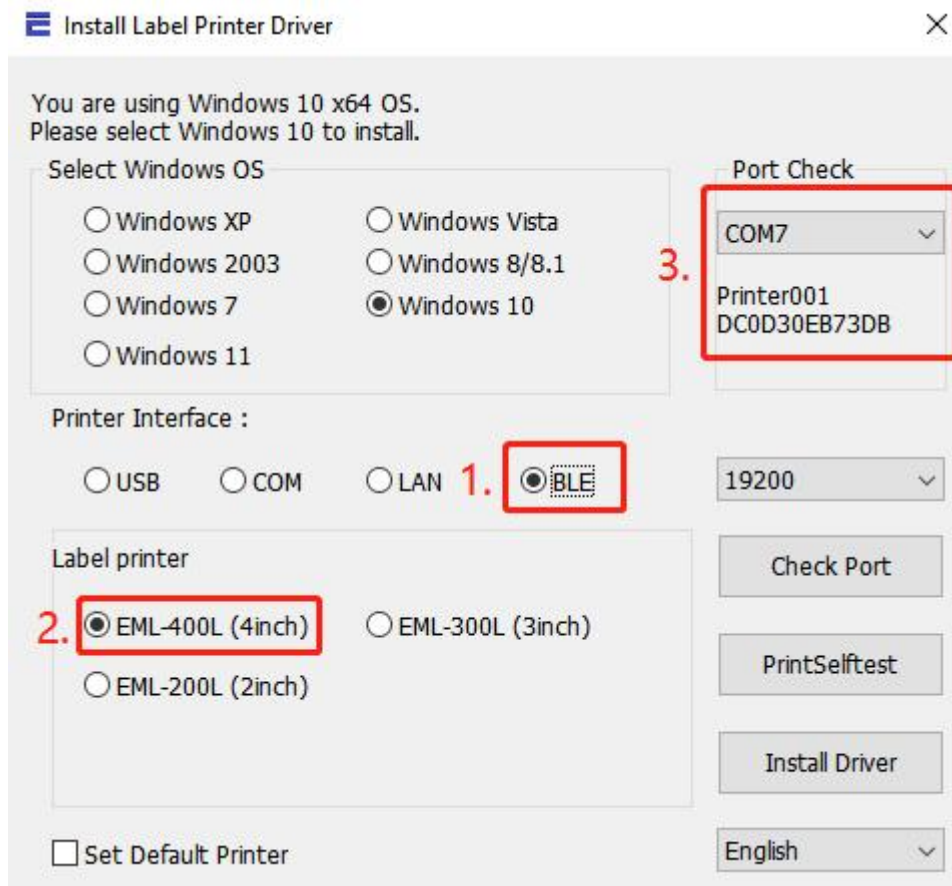
5、Bluetooth driver installation

- (1) The computer is connected to the printer Bluetooth,
Bluetooth name: Printer001 key: 0000



(2) Select the Bluetooth port and IP port number

(3) Choose the size according to the labeling machine model



(4) Click Start Installation

Install Label Printer Driver

You are using Windows 10 x64 OS.
Please select Windows 10 to install.

Select Windows OS

☐ Windows XP ☐ Windows Vista
☐ Windows 2003 ☐ Windows 8/8.1
☐ Windows 7 ☒ Windows 10
☐ Windows 11

Printer Interface :

☐ USB ☐ COM ☐ LAN ☒ BLE

Label printer

☒ EML-400L (4inch) ☐ EML-300L (3inch)
☐ EML-200L (2inch)

Port Check

COM7

Printer001
DC0D30EB73DB

19200

Check Port

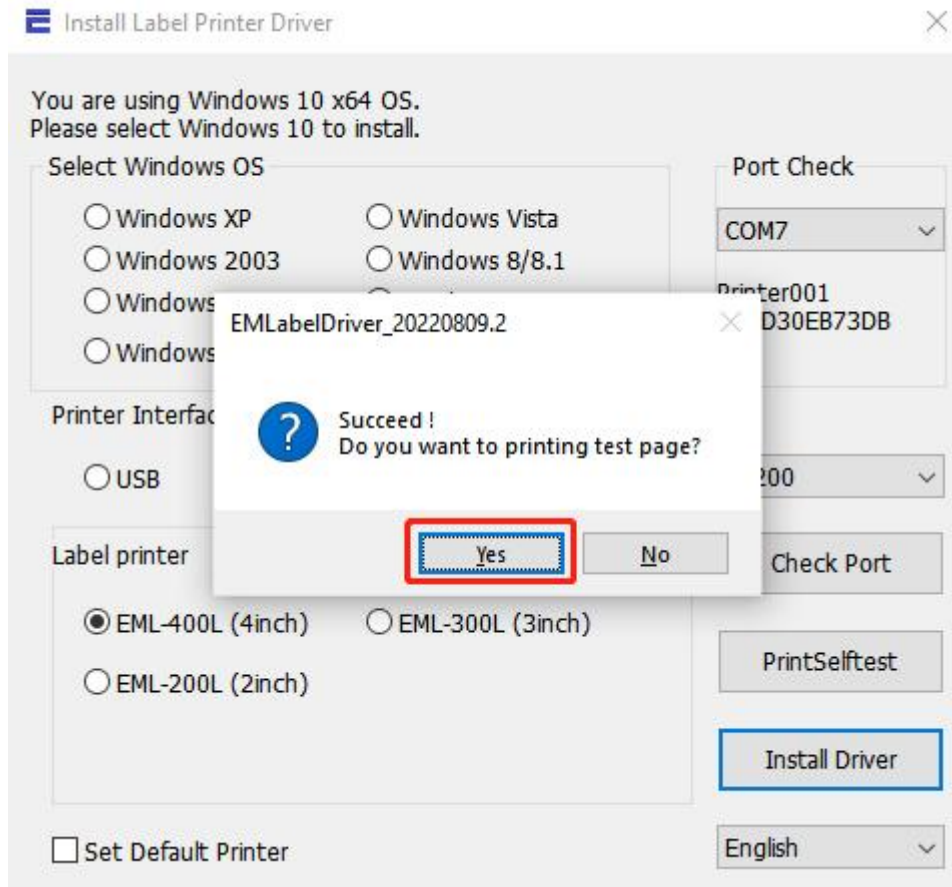
PrintSelftest

Install Driver

☐ Set Default Printer

English

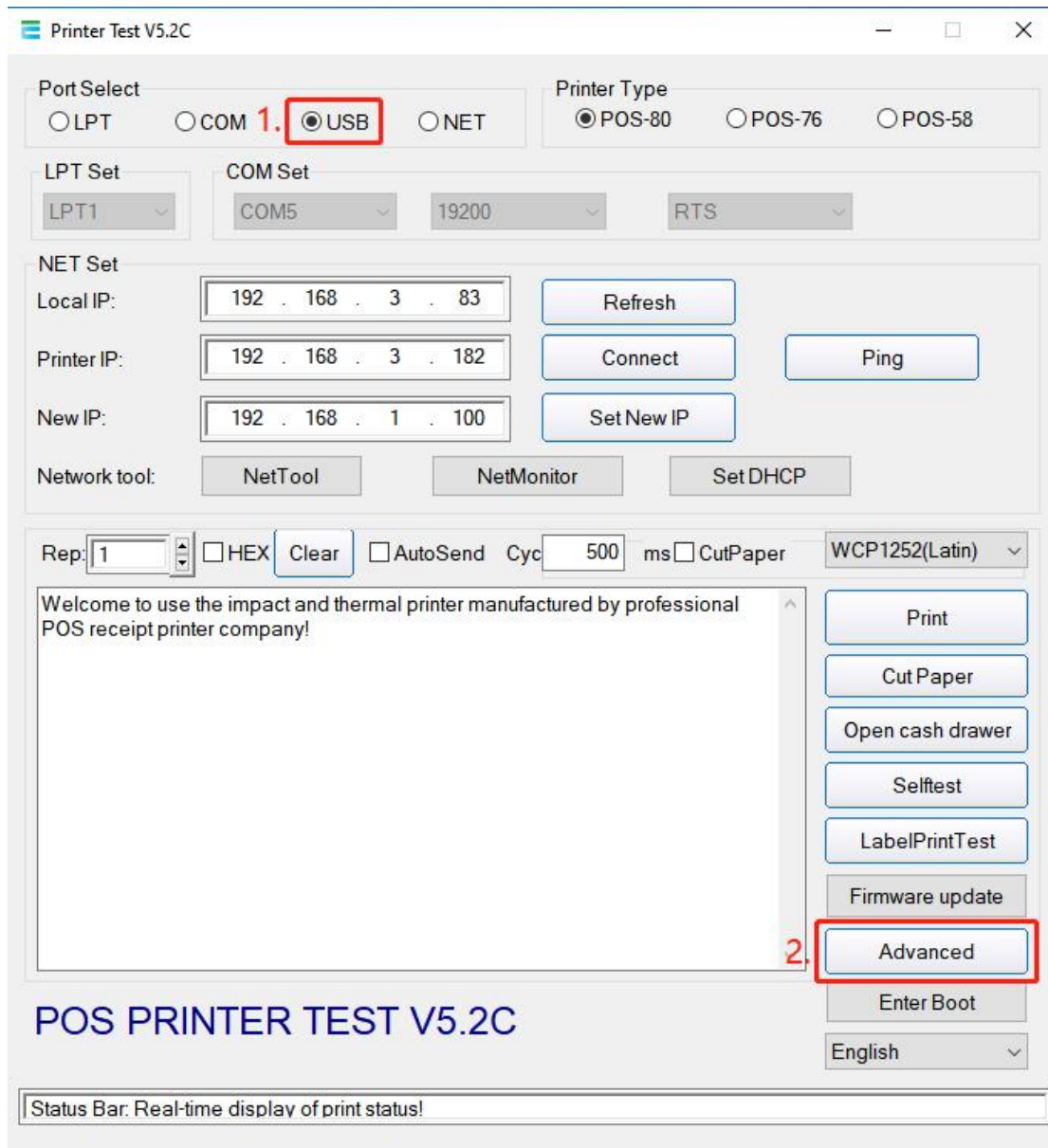
(5) Select YES to print the test page and check the printer driver name



(6) Installation is completed

6、WiFi driver installation

(1) Use "Printer Test" tool, plug USB cable, select USB connection, and select "advanced"



(2) Select network settings

The screenshot shows the 'Advanced' settings window for the EMLabel driver. The interface is divided into two main panels. The left panel contains various test and configuration buttons, while the right panel contains more detailed settings.

Left Panel:

- NV Logo Test: NV Download
- 2D Barcode test: Print 2D Barcode
- Black Mark Setting: BlackMarkSet
- File data send: Open File Send
- Net Setting: **Set Net** (highlighted with a red box), BluetoothSet
- USB MODE Setting: Set USB Printing, Set Virtual COM
- Printing Width Set: Setting, 72mm
- Barcode Test: Print BarCode, UPC_A, Height 129
- P80 Black sens: Set Sensitivity, 12, SensH 12
- DIP Setting: P80/58 Set DIP
- Code page Set: PrintCodePage, SetCodePage, 0
- Density Set: Set, 5
- SetPrinterType: Set, ESC/POS
- EPSON: Set, OFF

Right Panel:

- Queuing function: Type: Normal, Copies: 1, Function: ON, Initial NO: 0. TimeEn: OFF, Date: 2022年10月, Time: 17:04:09. Buttons: SetTime, QueuEdit.
- Intelligent alarm: Setting, LED ON, BEEP ON.
- Intelligent mode: Setting, Group.
- Idle alarm set: Setting, ON. Waiting time(s): 6, Alarm on(s): 3, Alarm off(s): 10.
- Cutter with alarm: Setting, ON. Alarm counter: 4, Alarm time(*50ms): 2, Alarm mode: 3.
- Cutter/With CashDrawer: Set, ON.
- HParameter Set: Print H, Set Delta, 5.
- P76 Buzzer Set: BuzzerSet, OFF.
- P76 Density Set: Set, NORMAL.
- Tools: QueueMonitor, NetTool.
- SetUserData: AB1234567891, +1, Set.
- return button.

(3) Set the IP of the printer WiFi(note that the IP needs to be set in the same gateway as the home network), and the printer is connected to the home network

The image shows two overlapping windows from a software interface. The top window is titled "Net Setting" and contains fields for "IP Address:", "NetMask", and "GateWay". The "IP Address:" field contains "192 . 168 . 3 . 52", "NetMask" contains "255 . 255 . 255 . 0", and "GateWay" contains "192 . 168 . 3 . 1". Each field has a corresponding "Set" button to its right. A large red box highlights the "IP Address:" and "GateWay" fields, with a red arrow pointing to it from the text "1.Set IP address in your router gateway" above. Below these fields is a "Set above contents" button. The bottom window is titled "WIFI Setting" and contains fields for "SSID:", "WIFI Key", and "Key Type". The "SSID:" field contains "Router name", "WIFI Key" contains "Router password", and "Key Type" is a dropdown menu set to "WPA2_AES_PSK". A red box highlights the "SSID:" and "WIFI Key" fields, with a red arrow pointing to it from the text "2." to its left. To the right of the "WIFI Setting" window, a red box highlights a "Setting All" button, with a red arrow pointing to it from the text "3." above it. Below the "WIFI Setting" window is a "Set above contents" button, and to the right of it is a "Return" button.

Net Setting

1.Set IP address in your router gateway

IP Address: 192 . 168 . 3 . 52 SetIPAddr

NetMask 255 . 255 . 255 . 0 SetNetMask

GateWay 192 . 168 . 3 . 1 SetGateWay

Set above contents

WIFI Setting

2.

SSID: Router name

WIFI Key Router password

Key Type WPA2_AES_PSK

Set above contents

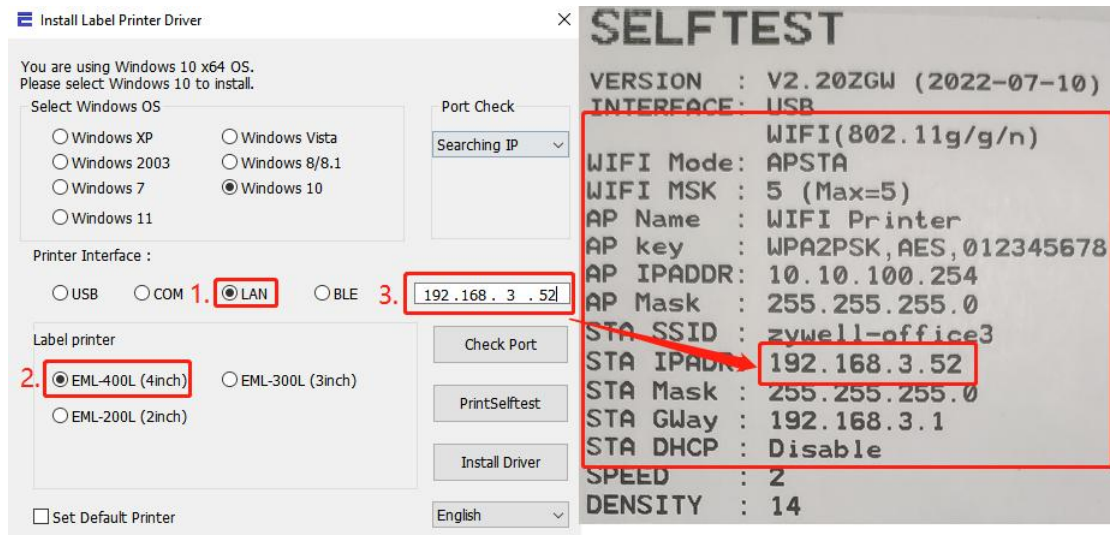
3.

Setting All

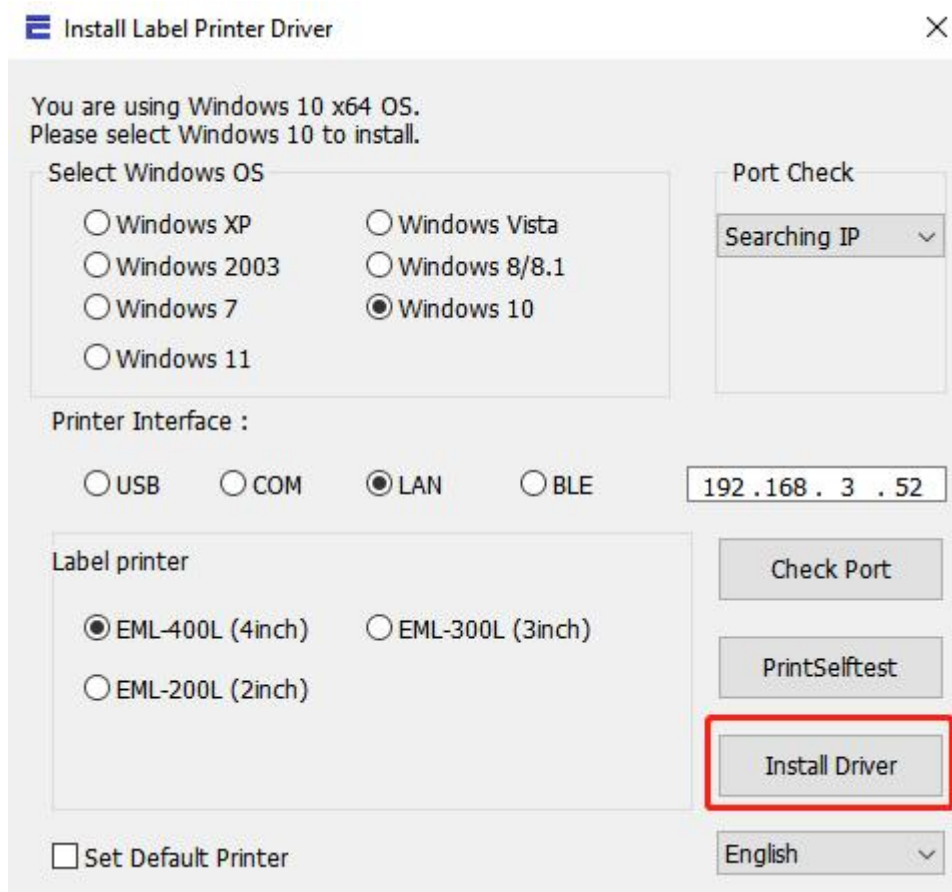
Return

If the wifi DHCP enable, ignore Step1

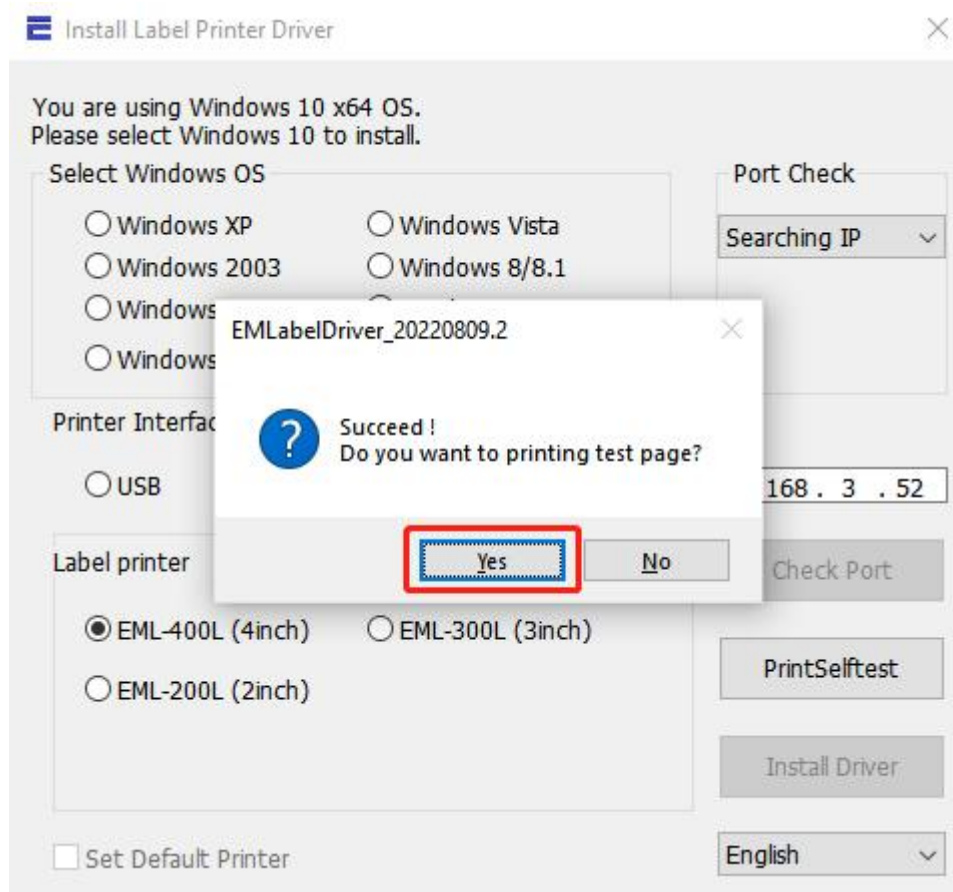
(4) Use "EMLabelDriver" for driver installation, select the network port and IP port number, choose the size according to the labeling machine model



(5) Click Start Installation



(6) Select YES to print the test page and check the printer driver name



(7) Installation is completed