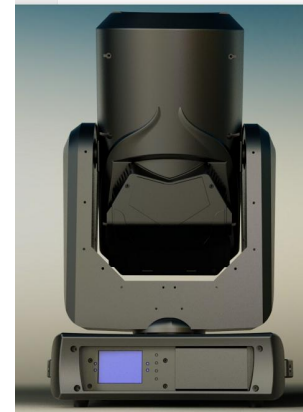


Water-proof 350W Beam



Model: YR-IP350-I

User Manual

Please read these instructions carefully before use

Contents

Section 1. Getting Started

- ✧ Unpacking
- ✧ Safety Instruction

Section 2. Set Up

- ✧ Installation
- ✧ Controlling Board
- ✧ Machine Connection

Section 3. Troubleshooting

- ✧ Troubleshooting

Section 4. Reference

- ✧ DMX Protocol
- ✧ Specification

Section 1. Getting Started

- ✧ Unpacking
- ✧ Safety Instruction

Unpacking

- 1pc fixture(lamp installed)
- 1pc User Manual
- 1pc Power Cable
- 1pc Signal Cable
- 2pc Fast-lock Omega Clamp (1/4 turn)

Thanks for using our YR-IP350 moving beam. Carefully unpack the box and check the contents to ensure that all parts are present and in good conditions. If anything damaged during transit, notify the shipper immediately and keep the packing material for inspection. Again, please save the carton and all packing materials. If the fixture must be returned to manufacturer, it is important that the fixture be returned in the original manufacturer box and packing.

Safety Instruction

For your safe, please read this user manual carefully before turn on the fixture.
This machine should be operated by qualified engineer!

- Please conserve this manual as operation guidance. If you sell this product to other user, please make sure that they also receive this user manual.
- Always make sure that you are connecting to the proper voltage and the line voltage not higher than stated on the decal or rear panel of the fixture.
- This lighting is intended to indoor use only. To prevent risk of fire or shock, do not expose fixture to rain or moisture. Make sure there are no flammable, explosive or corrosive materials surrounded in 10 /*-meters while operating.
- The unit must be installed in a location with adequate ventilation, at least 5m away from adjacent surfaces. Be sure that no ventilation slots are blocked.
- Fixture may carry high heat, do not aim at objective exceeding 2 minutes.
- Safe wire should be used to install machine. Bearing of safe wire should be 3 times of the machine weight.
- Always disconnect from the power source before servicing or replacing fuse/lamp and be sure to replace with same fuse/lamp size and type. Cut off power before moving, repairing and cleaning the machine.
- To avoid electric shock, all fixtures must be connected to circuits with a suitable ground.
- Always secure fixture using a safety chain and carrying handles. Never carry the fixture by its cord.
- Do not operate at ambient temperatures higher than 104°F (40°C).
- In case of failure or malfunction occurred, stop using the unit immediately. Never try to repair the unit by yourself. Repairs carried out by unskilled people can lead to damage or malfunction. Please contact the nearest authorized technical assistance center. Buy the same spare parts/components from manufacturer directly.
- Make sure the power cord is never crimped or damaged.
- Avoid direct eye exposure to the light source while it is on.
- Do not power on and power off the fixture in a short time.
- When use DMX controller, please make sure that there is no interference sources (e.g. intercom, high frequency radio waves and radiation source).



Caution!

There are no user serviceable parts inside the unit. Do not open the housing or attempt any repairs yourself. If exceptional problem happen, please contact related after-sale department or manufacturer.

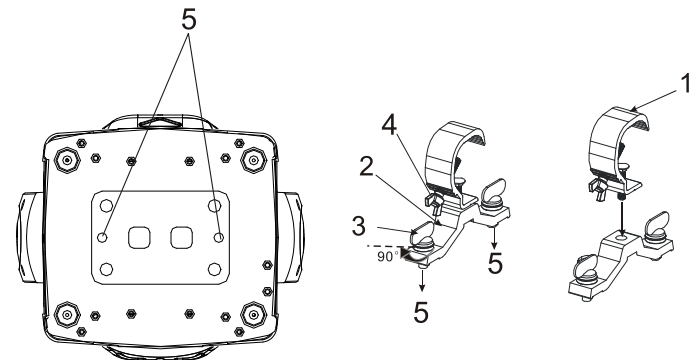
Any damage that cased by violating this manual is out of insurance, our company will not take the responsibility.

Section 2. Set Up

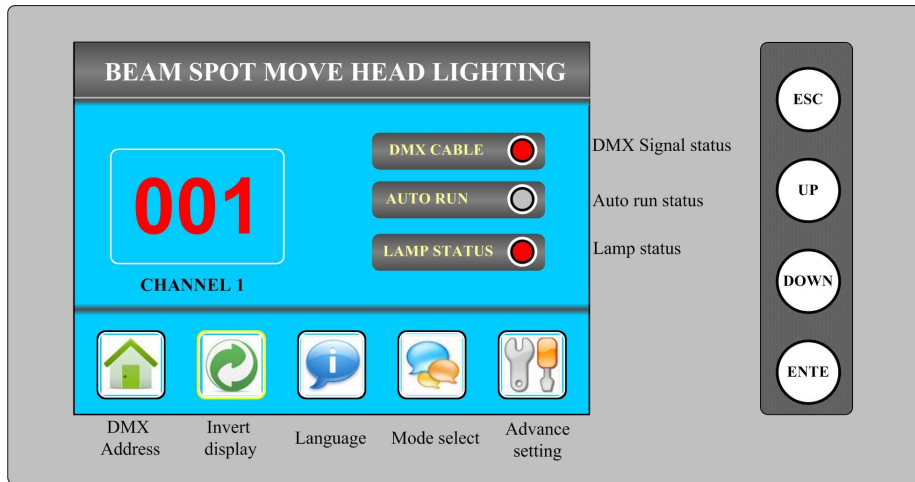
- ◇ Installation
- ◇ Controlling Board
- ◇ Machine connection

Installation

- This machine should be mounted through the screw holes of truss. Safety wire is a must to fix fixture well. Make sure truss and safety wire have strong load capacity to bear 3 times weight than fixture at least.
- This machine should be installed by qualified technician.



Controlling Board



Address	
WorkMode	
Display	001
Test	
Advance	
Status	
Escape	

Address	DMX Ctrl	✓
WorkMode	Auto Run	
Display	Sound Ctrl	
Test	M/S choose	OFF
Test	Lamp On	OFF
Advance	Channel Mode	sample
Status		
Escape		

Address	Language	中文
WorkMode	Screen saver	mode 1
Display	Screen rotation	OFF
Test	Touch Enable	ON
Test	Touch adjust	
Advance		
Status		
Escape		

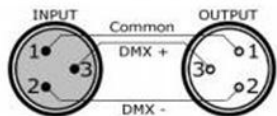
Address	PAN	000
WorkMode	TILT	000
Display	FOCUS	000
Test	COLOR	000
Test	GOBO	000
Advance	PRISM	000
Status	FROST	000
Escape	STROBE	000

Address	PAN Inset	OFF
WorkMode	TILT Inset	OFF
Display	Rectify Enable	ON
Test	PAN Offset	008
Test	TILT Offset	020
Advance	Lamp on when	pwr on
Status	Factory Setting	
Escape		

Address	Work Mode	DMX ...
WorkMode	Address	001
Display	Version	B5R.1.1 16n
Display	Elapse	000H 04M
Test	TatoI	00000H 04M
Advance		
Status	DMX Clr	SysRst
Escape		

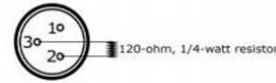
Machine Connection

Cables must have a male XLR connector on one end and a female XLR connector on the other end.



A word on termination: DMX is a resilient communication protocol,

however errors still occasionally occur. Termination reduces signal errors, and therefore best practices include use of a terminator in all circumstances. If you are experiencing problems with erratic fixture behavior, especially over long signal cable runs, a terminator may help improve performance.



To build your own DMX Terminator: Obtain a 120-ohm, 1/4-watt resistor, and wire it between pins 2&3 of the last fixture. They are also readily available from specialty retailers.

Complimentary signal cable can transmits signals to 20 unit fixtures at most. Signal amplifier is a must to connect more fixtures

Section 3. Troubleshooting

Troubleshooting

Problem	Probable cause(s)	Remedy
No response from fixture when power is applied	No power to fixture	Check power cables
	Primary fuse blown	Replace fuse
	Secondary fuse blown	Replace fuse
Fixture resets but does not respond correctly to controller(DMX mode operation)	Controller not connected	Connect controller
	Incorrect addressing of the fixtures	Check address setting on fixture and controller
	Bad data link connection	Inspect cables and correct poor connections and/or broken cables.
	Conflict between tracking and vector control	Eliminate scene cross-fade on controller
	Data link not terminated	Insert termination plug in output of last fixture
	Defective fixture or 2 devices transmitting on link	Bypass fixtures one at a time until normal operation is regained: unplug both connectors and connect them directly together
Colors cannot be mixed	Random color mixing is on	Turn off random color mixing
Fixture does not reset correctly	Electronic or mechanical failure	Contact service technician
No light, lamp cuts out intermittently, or burns out too quickly	Lamp missing or blown	Disconnect fixture and replace lamp
	Fixture or lamp is too hot	Allow fixture to cool. If problem persists, contact service technician

Section 4. Reference

✧ DMX protocol

✧ Specification

DMX Protocol 20CH MODE

Channel	Function	Effect
1	Pan scan	000~255 0-540°
2	Pan bit	000~255 0~2° adjust
3	Tilt scan	000-255 0°-270°
4	Tilt bit	000-255 0~1° adjust
5	Pan/tilt speed	000-255 from fast to slow
6	Shutter	000-003 insert 004-103 from slow to fast, pulse strobe 104-107 remove 108-207 from slow to fast, strobe 208-212 remove 213-251 from slow to fast random strobe <i>252-255 remove</i>
7	Dimmer	000-255 from dark to bright
8	Dimmer Fine	
9	Color	0-4 open 5-9 open + color 1 10-14 color 1 15-19 color 1+color 2 20-24 color 2 25-29 color 2+color 3 30-34 color 3

		35-39 color 3+color 4 40-44 color 4 45-49 color 4+color 5 50-54 color 5 55-59 color 5+color 6 60-64 color 6 65-69 color 6+color 7 70-74 color 7 75-79 color 7+color 8 80-84 color 8 85-89 color 8+color 9 90-94 color 9 95-99 color 9+color 10 100-104 color 10 105-109 color 10+color 11 110-114 color 11 115-119 color 11+color 12 120-124 color 12 125-129 color 12+color 13 130-134 color 13 135-139 color 13+color 14 140-144 color 14 145-149 color 14+open 150-199 from fast to slow, forward flow 200-255 from slow to fast, backward flow
10	Fixed Gobo	000~004 open 005~009 Gobo 1 010~014 Gobo 2 015~019 Gobo 3

		020~024 Gobo 4 025~029 Gobo 5 030~034 Gobo 6 035~039 Gobo 7 040~044 Gobo 8 045~049 Gobo 9 050~054 Gobo 10 055~059 Gobo 11 060~064 Gobo 12 065~069 Gobo 13 070~074 Gobo 1 shaking 075~079 Gobo 2 shaking 080~084 Gobo 3 shaking 085~089 Gobo 4 shaking 090~094 Gobo 5 shaking 095~099 Gobo 6 shaking 100~104 Gobo 7 shaking 105~109 Gobo 8 shaking 110~114 Gobo 9 shaking 115~119 Gobo 10 shaking 120~124 Gobo 11 shaking 125~129 Gobo 12 shaking 130~134 Gobo 13 shaking 135~191 forward flow, fast to slow 192~255 reverse flow, slow to fast
11	Prism wheel 1	000-063 prism stop 064-127 prism plate 1 128-191prism plate 2 192-255 prism plate3

12	Prism wheel rotate	000-127: 0°~400° positioning 128~187 forward flow, fast to slow 188-195 stop 196~255 reverse flow, slow to fast
13	Prism wheel 2	000-127 prism stop 128-191prism plate4 192-255 prism plate5
14	Prism wheel 2	000-127: 0°~400° positioning 128~187 forward flow, fast to slow 188-195 stop 196~255 reverse flow, slow to fast
15	Macro function	000-015 no function 016-031 Macro1 032-046 Macro2 047-061 Macro3 240-255 Macro15
16	Fog	000-127 no function 128-255 insert fog plate
17	Zoom(amplify)	000-127 no function 128-255 insert amplify
18	Focus	000-255 0~100% focus
19	lamp	000-099 no function 100-105 Turn off the lamp after 3 Seconds 106-199 N/A 200-205 Turn on the lamp after 3 Seconds 206-255 no function

20	reset	000~127 no function 128~255 reset after 3 Seconds
----	-------	--

DMX Protocol 16CH MODE

Channel	Function	Effect
1	Color	000-004 open
		005-009 open + color 1
		010-014 color 1
		015-019 color 1+color 2
		020-024 color 2
		025-029 color 2+color 3
		030-034 color 3
		035-039 color 3+color 4
		040-044 color 4
		045-049 color 4+color 5
		050-054 color 5
		055-059 color 5+color 6
060-064 color 6		
065-069 color 6+color 7		
070-074 color 7		
075-079 color 7+color 8		
080-084 color 8		
085-089 color 8+color 9		
090-094 color 9		
095-099 color 9+color 10		
100-104 color 10		
105-109 color 10+color 11		
110-114 color 11		
115-119 color 11+color 12		
120-124 color 12		

		125-129 color 12+color 13 130-134 color 13 135-139 color 13+color 14 140-144 color 14 145-149 color 14+open 150-199 from fast to slow, forward flow 200-255 from slow to fast, backward flow
2	Shutter	000-003 insert 004-103 from slow to fast, pulse strobe 104-107 remove 108-207 from slow to fast, strobe 208-212 remove 213-251 from slow to fast random strobe 252-255 <i>remove</i>
3	Dimmer	000-255 from dark to bright
4	Fixed Gobo	000~004 open 005~009 Gobo 1 010~014 Gobo 2 015~019 Gobo 3 020~024 Gobo 4 025~029 Gobo 5 030~034 Gobo 6 035~039 Gobo 7 040~044 Gobo 8 045~049 Gobo 9 050~054 Gobo 10

		055~059 Gobo 11 060~064 Gobo 12 065~069 Gobo 13 070~074 Gobo 1 shaking 075~079 Gobo 2 shaking 080~084 Gobo 3 shaking 085~089 Gobo 4 shaking 090~094 Gobo 5 shaking 095~099 Gobo 6 shaking 100~104 Gobo 7 shaking 105~109 Gobo 8 shaking 110~114 Gobo 9 shaking 115~119 Gobo 10 shaking 120~124 Gobo 11 shaking 125~129 Gobo 12 shaking 130~134 Gobo 13 shaking 135~191 forward flow, fast to slow 192~255 reverse flow, slow to fast
5	Prism wheel 1	000-063 prism stop 064-127 prism plate 1 128-191prism plate 2 192-255 prism plate3
6	Prism wheel 1 rotate	000-127: 0°~400° positioning 128~187 forward flow, fast to slow 188-195 stop 196~255 reverse flow, slow to fast
7	Prism wheel 2	000-127 <i>prism stop</i> 128-191prism plate4 192-255 prism plate5

8	Prism wheel 2 rotate	000-127: 0°~400° positioning 128~187 forward flow, fast to slow 188-195 stop 196~255 reverse flow, slow to fast
9	Fog	000-127 no function 128-255 insert fog plate
10	Zoom(amplify)	000-127 no function 128-255 insert amplify
11	Focus	000-255 0~100% focus
12	Pan scan	000~255 0-540°
13	Tilt scan	000-255 0°-270°
14	Pan/tilt speed	000-255 from fast to slow
15	lamp	000-099 no function 100-105 Turn off the lamp after 3 Seconds 106-199 N/A 200-205 Turn on the lamp after 3 Seconds 206-255 no function
16	reset	000~127 no function 128~255 reset after 3 Seconds

Specification:

Voltage: AC110V-240V

Frequency: 50/60Hz

Power Consumption: 450W

Halogen lamp: 17R 350W

Scan: Pan 540°, Tilt 270°, photoelectric reset and correction

Shutter: 1-13t/s mechanical control and speed adjustable.

Color Temperature: 8000K

Water-proof grade: IP55

Control: DMX512

Channel: 16ch /20ch switchable

Control Mode: DMX/sound active/auto

Fixed Gobo wheel: 4 white+10 gobos+ 1 effect gobo

Color wheel: 14+open, rainbow effect

Prism wheel:2

Prism wheel1: 32 facet prism + 6 facet linear prism+1 two layer of prism

Prism wheel2: 16 facet prism + 6 facet linear prism+1 fog effect plate

16 facet prism + 6 facet linear prism

Beam angle: 4°/8° (Without or with amplify)

Thermal protection: Automatically cut off the power when over heat.

Physical Parameters:

Machine size: 433.5*396.8*722.5mm

Machine weight: 25.7kg