



中文网站 ▶ [www.qilee.cn](http://www.qilee.cn)

▶ [www.chinaqilee.com](http://www.chinaqilee.com)

English Http ▶ [www.qilee88.com](http://www.qilee88.com)

▶ [www.qileegroup.com](http://www.qileegroup.com)

Shanghai QILEE Environmental Protection Equipment Co.,Ltd



## 上海祁立环保设备有限公司

Shanghai Qilee Environmental Protection Equipment Co.,Ltd

地 址: 上海市闵行区顾戴路3009号412室

邮 编: 201101

电 话: 021-51697580 51697585

传 真: 021-51687968

邮 箱: [qilee@qileegroup.com](mailto:qilee@qileegroup.com)

网 址: [www.chinaqilee.com](http://www.chinaqilee.com) [www.qilee.cn](http://www.qilee.cn)

Add: Room 412, No. 3009 Gudai Road, Minhang District, Shanghai, China. P.C 201101

Tel: +86-21-51697580 51697585

Fax: +86-21-51687968

E-mail: [qilee@163.com](mailto:qilee@163.com)

Http: [www.qilee.cn](http://www.qilee.cn) [www.chinaqilee.com](http://www.chinaqilee.com)

地 址: 北京市海淀区交大东路66号院2号楼钻河中心1533室

电 话: 139 1092 4012

邮 箱: [qilee@163.com](mailto:qilee@163.com)

Beijing office

Add: Room 1533, Jiaoda Road No. 66, Haidian District, Beijing China

Tel: 139 1092 4012

E-mail: [qilee@163.com](mailto:qilee@163.com)



## 上海祁立环保设备有限公司

Shanghai QILEE Environmental Protection Equipment Co.,Ltd



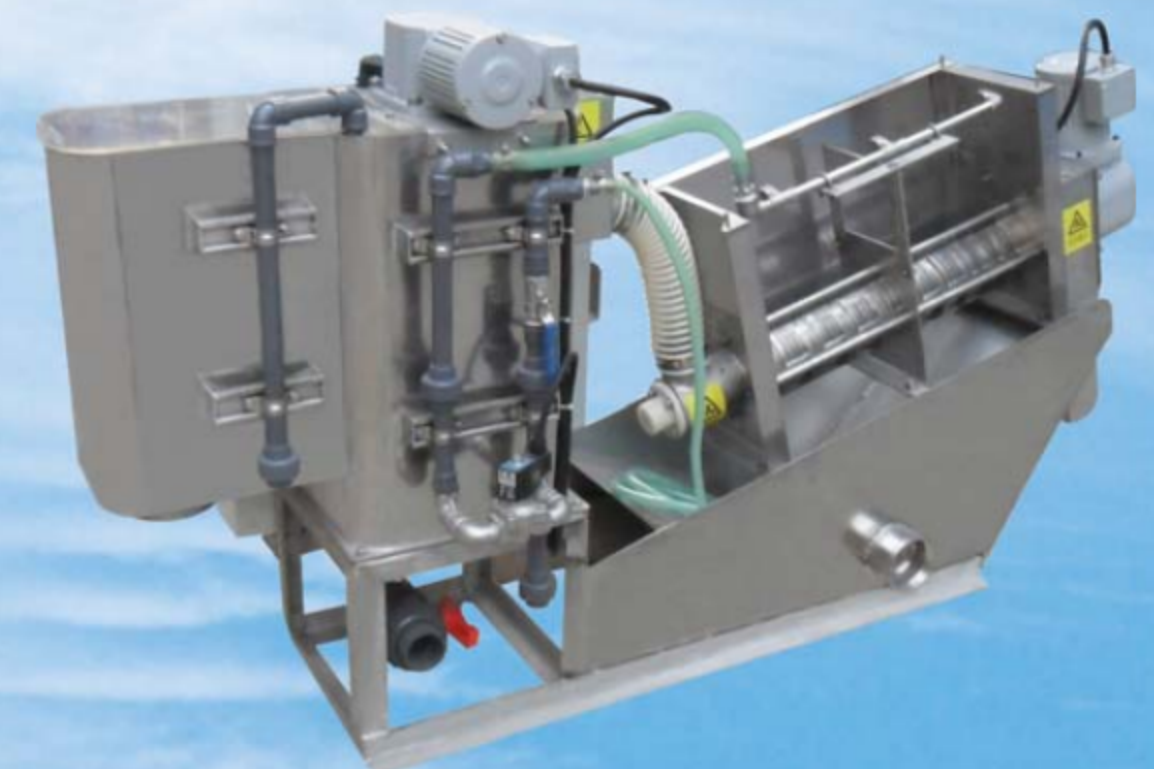
转鼓浓缩/脱水一体机

Rotary Drum Thickening/Dehydrating Belt Presses



高分子全自动泡药机

Macromolecule Automatic Dissolver



叠螺式污泥脱水机

Stacked Sludge Dewatering



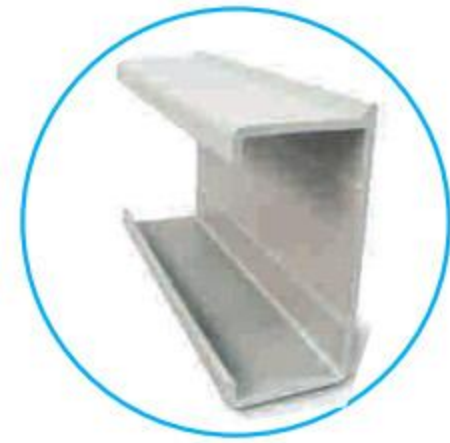
## Non-Metallic Chain Mud Scraper

Qilee has many years of experience in designing and producing mud drainage systems. The mud scraper of our company is manufactured with the most fine materials on the market. The driving sprocket chain is made of non-metallic materials. The equipment design is reliable, the price is reasonable, and it is an important part of the rectangular sedimentation tank.



### Strong and Lightweight Non-Metallic Chain

Precision forming reinforced glass fiber reinforced plastic, specially designed Non-metallic sludge scraper chain can work in corrosive environment and under high sludge load



### Simple Installation Use Persistent

#### Reinforced glass fiber reinforced plastic mud scraper

The reinforced glass steel plate has a series of different side section designs to choose from and will not float.



### Robust support and guide rail

#### Wear strip and return guide

Stainless steel bracket, fiberglass return guide rail and stainless steel wear strip

## Feature

1. The number of scrapers is large and the mud scraping ability is strong; The moving speed of the scraper is slow, and it has little disturbance to the sewage, which is conducive to the sediment.
2. The scraper moves continuously in a straight line in the pool, and does not need to reverse, so it does not need a travel switch. The drive device is located on the platform at the top of the pool, and the power distribution and maintenance are very simple.
3. It can also be used as a skimmer without additional mechanism.
4. There are no heavy structural parts and supports in the system, and the system energy consumption is low. It is applicable to the operation of spreading slag on the inner surface of rectangular primary sedimentation tank and secondary sedimentation tank and scraping mud at the bottom; The surface skimming and bottom scraping operation in the circular tank and the surface skimming application in various tank body shapes.

## [ Core Values ]

Honest Pioneer Service

## [Business Goal]

Based on the enterprise, develop employees, provide customers with the best service, become the industry leader in the field of environmental protection.

## Right Mentality ➤

Positive mental attitude;  
Integrity; Pioneering;  
Determination; Respect;  
Persistence; Courage to overcome weakness;  
Responsibility; Pursuit of excellence;  
Constantly improving; Passion

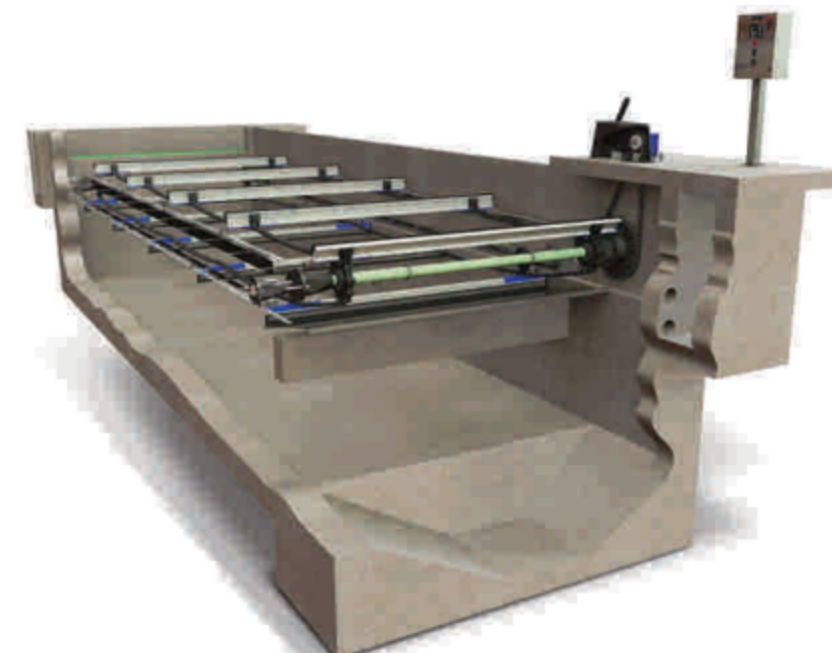


## Scraper System

Our engineers and sales staff have abundant crystal production knowledge and experience, to help customers according to the size of the project, the scope of the project needs for crystal production selection and design. Common sedimentation tank types include:



Bottom Scraper



Pool surface Scraper



Multifunctional Mud Scraper

## Mud Scraper Chain

Non-metallic mud scraper chain, used for roiling the traditional heavy weight, easy to corrode chain. Our non-metallic components are robust and durable, durable in harsh, corrosion-prone environments, strong and lightweight, and are a good alternative to cast iron and steel systems. Adhering to high quality standards, the maximum strength of Chainvos is regularly measured through load, elongation and predicted wear life.



### Mud Scraper Chain

Made of durable reinforced glass diamond precision casting, the mud scraper chain can withstand high sludge load in harsh environments. Special materials and reinforcement bars prevent chain elongation to optimize system operation and extend service life. No special tools are required for installation.



### Essential Component

Pins and pin clips

Button-type pin is easy to install.

Color contrast pin clip convenient field inspection.

## Accessory



Chain connection

The chain connector connects the scraper to the chain and is made of the same material as the chain.



Wear-resistant boots

The boot runs on a wear strip at the bottom of the mud scraper



Cushion block

A hard pad is installed between the rear of the scraper and the connecting piece.



## Fiberglass scraper board

Scraping board design to meet the needs of all sewage and drinking water treatment mud scraping, the designer according to the size of each project sedimentation tank, sludge load and project budget comprehensive consideration to choose suitable scraping board, all scraping board can be matched with the mud scraper connector, another equipped with scraper and scraper for choice, to achieve a thorough cleaning of the bottom of the pool. More than 50% yarn content.



### C Groove scraper

Common sedimentation tank span and load are preferred. The company's C groove scraping board compared to other common C groove scraping board has the strongest hardness coefficient. This type of scraper can also be used as a return and guide rail to increase system strength and flexibility.



### Super strength scraper

The super strength scraping board series is more suitable for wide span pool type than C groove scraping board. The wide scraper legs and longitudinal bars parallel to the front of the scraper make the section of the scraper stronger and harder, and can withstand higher sludge load.



### Box scraper

Box scraper series has a strong section design, so that this scraper has a high hardness coefficient, is one of the strongest scraper on the market

## Return guide rail and wear strip

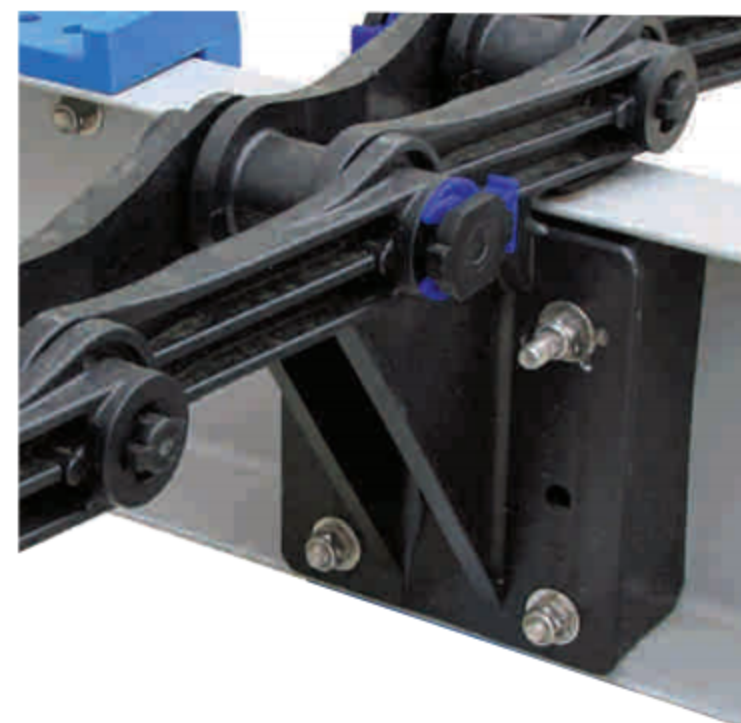
Our company's return guide rail and wear-resistant strip are non-metallic mud scraper indispensable components. For use in new or existing rectangular sedimentation tanks, these components are lightweight, economical, strong and durable enough to support all chains and scrapers and components, making them an effective alternative to steel systems.

### Return guide

The company's return guide is made of anti-corrosion reinforced glass steel material for easy installation and field adjustment, and the return guide is made of stainless steel for wear resistance and smooth

### Wearing strip

Our wear-resistant strips provide an ideal contact surface for easy sliding wear boots with low friction.



## Chain wheel

The sprocket is made of selected high strength nylon material by centrifugal casting at high speed. Good stability, strong rigidity, high strength, corrosion resistance, low temperature resistance



### Driver

The sprocket of mud scraper is composed of an odd number of teeth, and the interval of each two teeth is half of the chain pitch. This design doubles the service life on the basis of the full tooth sprocket. Easy to install. Mechanical processing fixed flange to ensure the absolute synchronization of sprocket rotation. The number of teeth can be customized according to user requirements



### Driven wheel

Driven sprocket adopts sliding installation, connected with driven shaft, quick and easy installation, sprocket center configuration shaft bushing, prolong the service life.

## Transmission shaft

### Axle body

All sprocket shafts shall be made of SUS304, or carbon steel anticorrosive, with a diameter of at least 50mm and above. The design size shall be strong and rigid enough to withstand the twisting stress of the design load without deformation or damage.

### Bearing

Bearings should be separated automatic alignment water lubricated bearings to facilitate maintenance and replacement when needed, its shell is stainless steel, the inner core is ultra-high molecular weight polyethylene, can prevent sediment accumulation on it.



## DHG (Material: Wear resistant nylon)

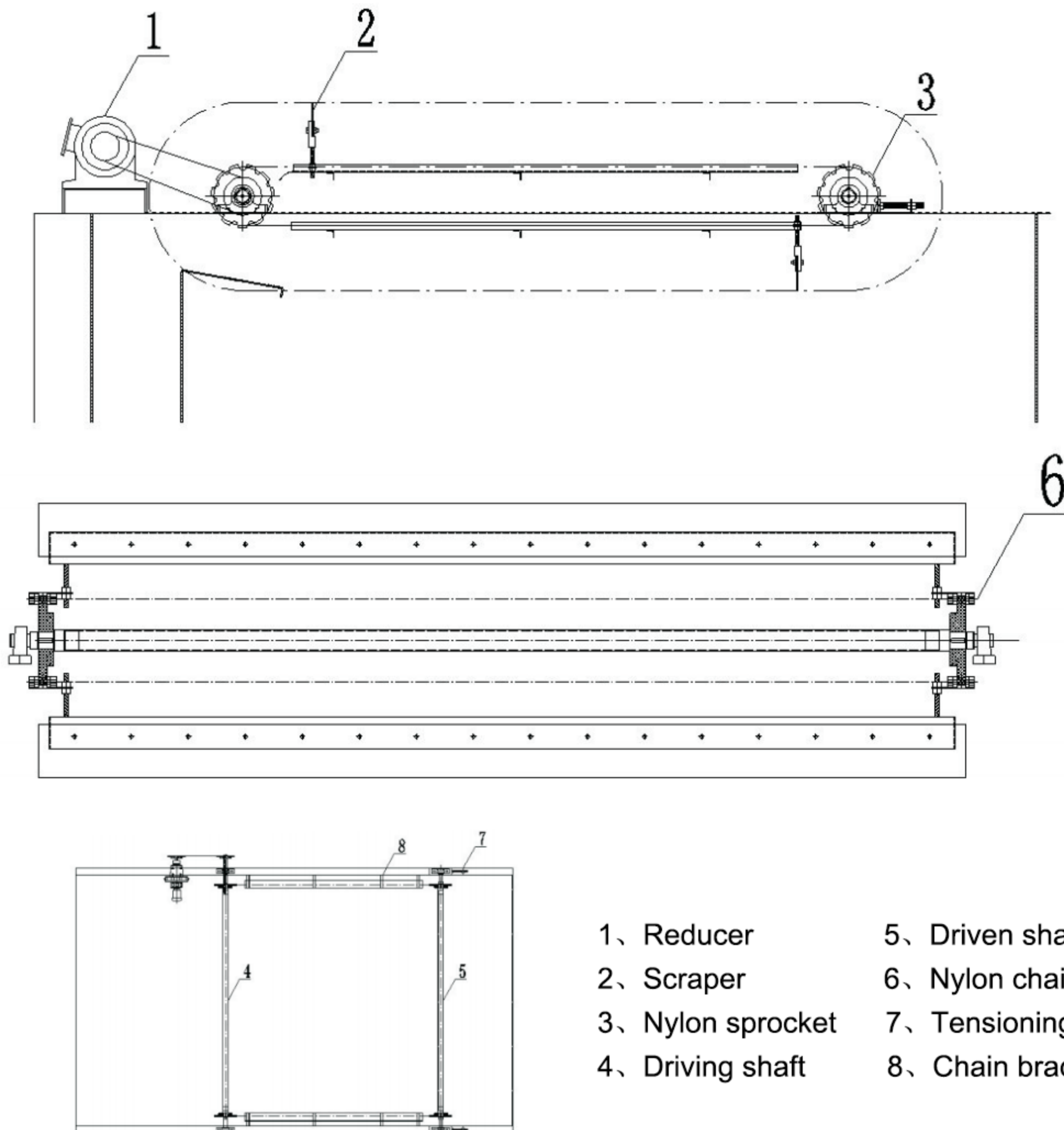
### 1、 Overview

DHG Series auxiliary slag machine is mainly used in the air float tank, auxiliary removal of liquid surface scum to slag tank centralized treatment.

The machine adopts the chain drive mode to drive the slag scraper continuous operation, with high transfer torque, smooth operation, good steady flow effect. The chain, sprocket material is nylon, with wear resistance, corrosion resistance and other characteristics.

### 2、 Constitute

DHG Series auxiliary slag machine is mainly composed of drive shaft, driven shaft, nylon chain, nylon sprocket, reducer, adjustable auxiliary plate and so on.



- |                   |                    |
|-------------------|--------------------|
| 1、 Reducer        | 5、 Driven shaft    |
| 2、 Scraper        | 6、 Nylon chain     |
| 3、 Nylon sprocket | 7、 Tensioning gear |
| 4、 Driving shaft  | 8、 Chain bracket   |

## DHG (Material: Wear resistant nylon)

### 3. Installation instructions and precautions

- 1、 Adjust the optimal sub-slag distance of sub-plate before operation;
- 2、 Reducer oil change regularly;
- 3、 Plate lubricating oil is applied regularly;
- 4、 Use a tensioning device to tighten the chain after a long run.

### 4. Model and parameters

DHG -

Net width of pool  
Chain plate type nylon  
chain slag scraper



### DHG Technical Parameters

Model	Net width of pool (m)	Scraping stroke (m)	Power (kw)	Top and Distance liquid (mm)
DHG - 0.5	0.5	1~3	0.37	200~300
DHG - 1	1	1~3	0.37	
DHG - 1.5	1.5	1~3	0.37	
DHG - 2	2	1~3	0.37	
DHG - 2.5	2.5	1~5	0.55	
DHG - 3	3	1~5	0.55	

Note: Customers need to provide detailed equipment drawings and site actual size data when booking, if special specifications, our company can design and manufacture separately.



## Sample diagram of nylon sprocket and chain



## Sample diagram of nylon sprocket and chain

