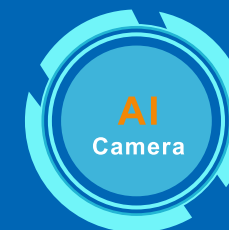


Choose Certified Safety Solution, Choose PJ-AUTO!



## CATALOGUE 2025

Leading Vehicle Camera Manufacturer & 360° AVM Supplier



GUANGZHOU PJ-AUTO ELECTRONIC TECH LTD.

+86-20-31520230

sales@pjauto.com.cn

www.pjautotech.com

Add:2/F~5/F,10th Building,#1 Hulian 2nd Road,YongXing Auto Parts Zone,Taihe Town, Baiyun District , Guangzhou China



www.pjautotech.com



\* Product specifications may be subject to change. For the most up-to-date parameters, please consult our sales representative.

# COMPANY PROFILE



**16+YR**

Automotive Industry Experience



**High-Tech**

National High-tech enterprise



**16949**

Automotive QMS Certification

**60+**  
Product Patents

**40+**  
International Certificates

**150+**  
Project Experience

**100+**  
Skilled Worker

**3000+**  
Plant Area



## ABOUT PJ-AUTO

PJ-AUTO is a leading manufacturer of vehicle cameras and a supplier of 360-degree around view systems (360° AVM) in the industry. Founded in 2009, we have organized and trained a professional team with senior engineering and solid management backgrounds, 30% of our staff have a university degree and over 40% have 10+ year automotive electronics industry experience. We are officially awarded as a "National High-Tech Enterprise" and certified with IATF16949:2016 quality management system. "Highest standards of quality and integrity" is the principle we hold in pursuit of our primary goal of "Customer success".

### Our Mission

Eliminate blind spot hazards to create a safer road and workplace for the world.

### Our Vision

Dedicating to safety field for at least 50 years to have an international brand strongly built, a talent team of industry experts cultivated, and a group of international partners become leaders in their local market.

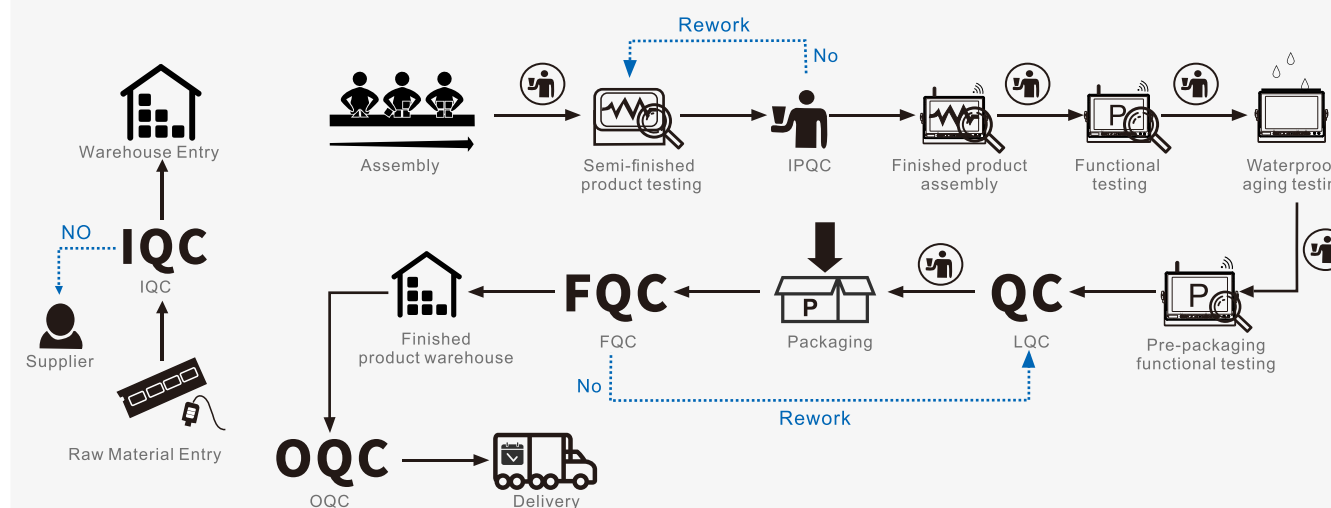
### Core Values

- Stick to the right path
- Embrace innovation
- Strive for continuous improvement
- Adopt a long-term perspective
- Ensure the fulfillment of our mission.

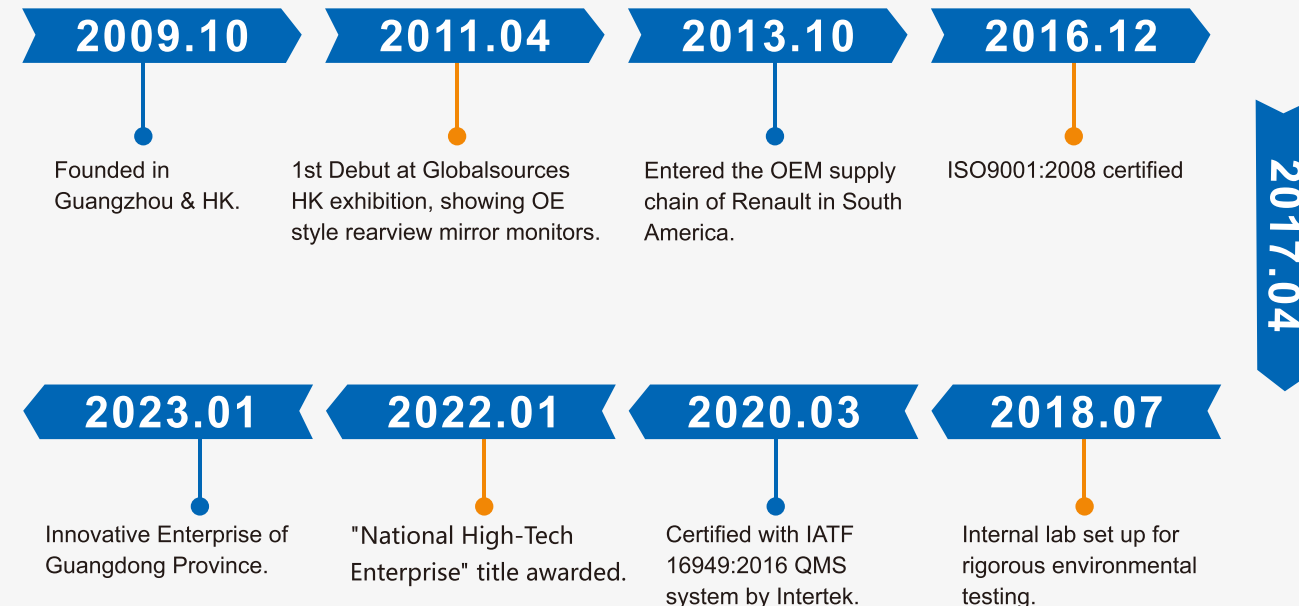
### Business Philosophy

- Always customer first
- Focus on systematic solution
- Adopt international standards
- Be honest and strive for mutual benefits.

## QUALITY CONTROL FLOW CHART



## MILESTONES





# ENTERPRISE QUALIFICATION

# 16+ YEARS MANUFACTURING EXPERIENCE OF VEHICLE CAMERA MONITOR SYSTEMS

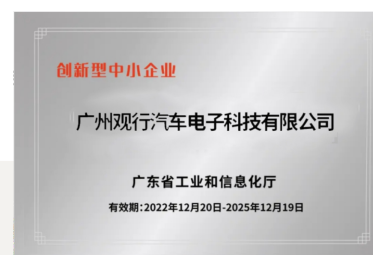
## LICENSE AND QUALIFICATIONS



Business License



High-Tech Enterprise



Innovative Enterprise

## PRODUCT CERTIFICATES



IP69K CE E-MARK FCC RoHS UKCA RED TELEC

## PATENTS OF INVENTION AND UTILITY



## PATENTS OF INDUSTRIAL DESIGN



\*The above is only a portion of the certifications and patents. PJAUTO obtains 20+ certifications and 30+ patents every year.



# CONTENT

## AI 360° AVM (P01~P04)

- 360° AVM System Overview
- AI 360° AVM- Local Version
- AI 360° AVM-4G Version
- Integrated 360° AVM
- Integrated 360° AVM (None AI)

## AI BSD Camera(P05~P08)

- Pedestrian warning AI Camera
- AI BSD Camera Combo
- AI Dashcam
- AI MDVR System

## Specialized Camera(P09~P13)

- RGB IR Camera
- Auto Shutter Camera
- Extreme Weather Proof Camera
- HD Stainless Steel Cameras
- HD 180° SW Angle Camera
- 4MP 180° SW Angle Camera
- TVI Cameras
- LVDS Cameras
- IP Cameras
- AHD/CVBS Camera
- Brake Light Cameras

## HD Rear view system(P14~P17)

- Smart AI Blind Spot Detection
- HD Rear View System
- 4-CH DVR Monitor System
- 6-CH DVR Monitor System
- F&S View A-Pillar Monitor Combo
- Microwave Radar Monitor Combo
- Ultrasonic Monitor Combo

## HD Monitor(P18~P20)

- 1080P AHD Monitors (5" ~ 10.1")
- 1080P DVR Monitors (7"~11.6")
- VGA / HDMI / CARPLAY Monitor
- 9"OE LVDS Streaming Mirror
- 9.6"1080P Full Display Mirror
- 7" Mirror Radar COMBO

## Wireless System(P21~P22)

- 2.4GHz HD Digital Wireless System
- Wireless Zoom Camera Monitor System

## Passenger Vehicle Monitor & Camera(P23~P27)

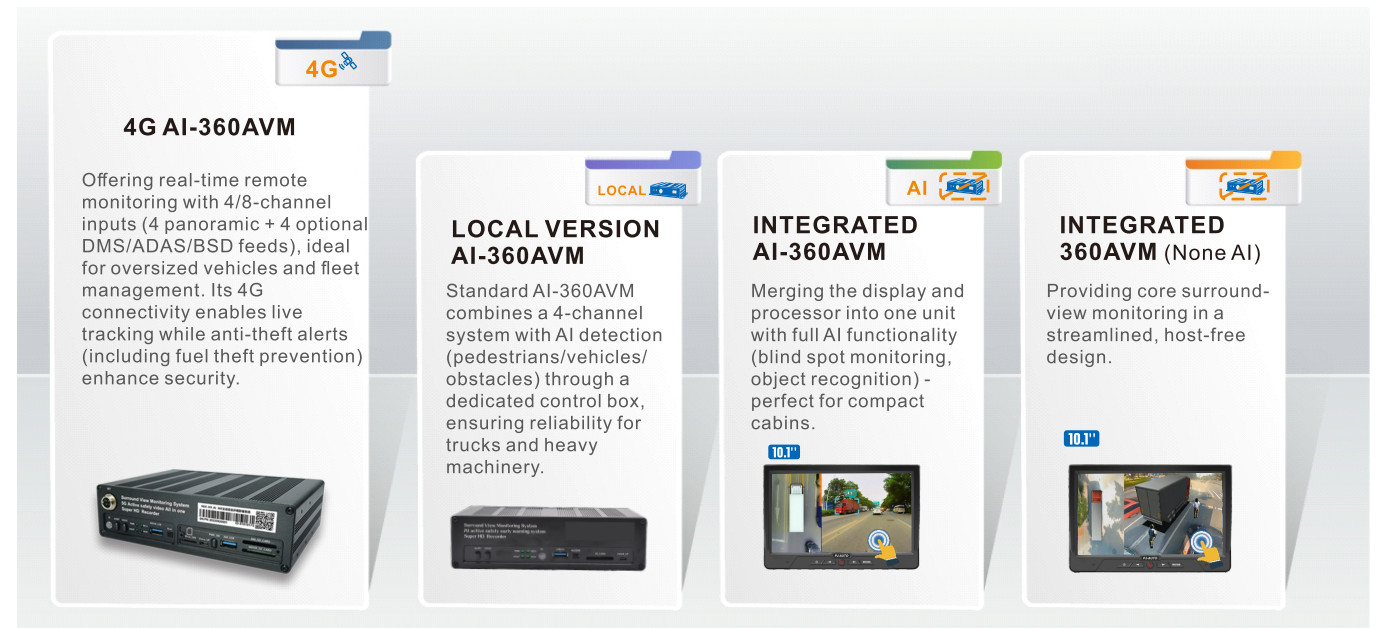
- 5" /4.3" AI Monitor Camera system
- 4.3" Bicycle Monitor system
- Motorcycle Carplay Monitor
- AI Camera / 180 SW Camera
- Off-Center Adjust Camera
- Multiple Mounting Camera/ Side Camera



## 360° AVM System Overview

PJ-AUTO offers a comprehensive range of 360° AVM systems designed to enhance safety and operational efficiency for commercial vehicles. These systems are with AI-powered detection, high-definition imaging, and rugged durability, providing real-time situational awareness, helping minimize accidents and optimize efficiency.

- ✓ AI-Powered Object Detection (Pedestrians, Vehicles)
- ✓ All-Weather Durability (up to IP69K)
- ✓ 4G Remote Monitoring & Fleet Integration
- ✓ Seamless Integration with ADAS & DMS



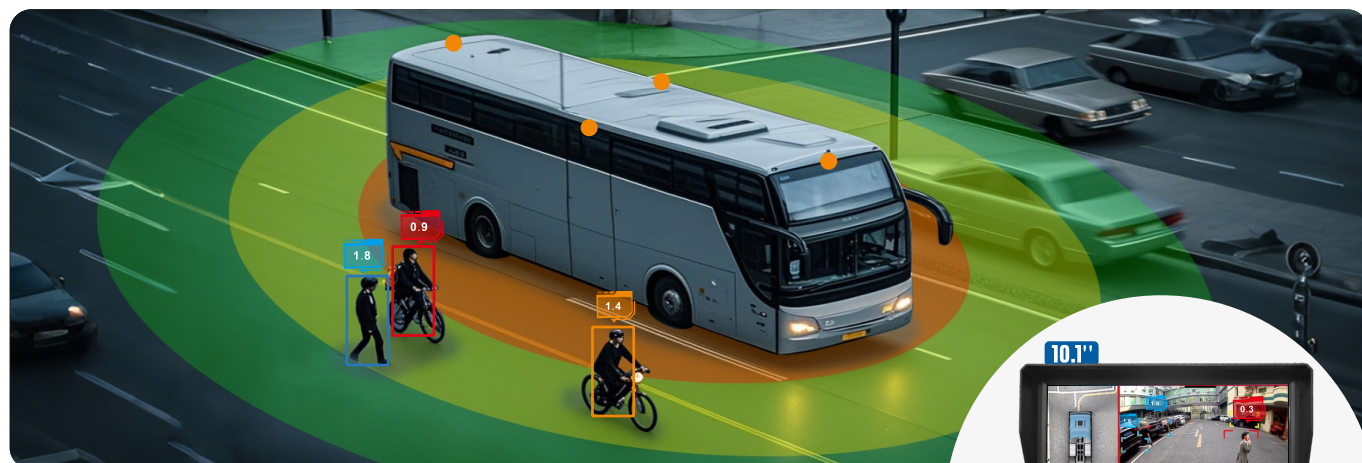
## Proven Applications Across Industries



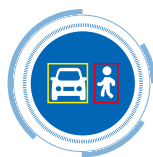
\*Contact us for a tailored 360° safety solution for your fleet!



## AI 360° AVM- Local Version



AI 360° Vision



Pedestrian &amp; Vehicle Detection



1080P HDMI Display



3D/2D Switching



Video Recording



### Features:

- 360° AVM Imaging:**  
Provides a seamless, all-around view with no blind spots..
- High-Definition Input:**  
Supports 4-CH 1080P video input for crystal-clear visuals.
- Large IPS Display:**  
10.1-inch wide screen with 1024×600 ultra-HD resolution for sharp and vivid imaging.
- Smart Warning Expansion:**  
Compatible with radar sensors and strobe alarms for enhanced safety alerts.
- High-Capacity Storage:**  
Includes 512GB SD card storage, expandable up to 2TB HDD/SSD for extended recording.

Product Parameters	
Version	4-CH AI 360AVM, Local
Video input	4-CH
Video output	HDMI / VGA / AHD / CVBS
Video Compression Format	H264/265
Storage Capacity	SD (8-256GB), support SSD up to 2TB
Power Supply	12-36V
Display	10.1" HDMI
Resolution	1024*600
Camera Resolution	1080P, 25FPS
FOV	220°
Mounting Vehicle Length	up to 19M

### Options



\*Non-AI version available

### Options



360° Cameras

### Multiple Selection Model:



\*Customizable UI for other vehicle

## AI 360° AVM-4G Version



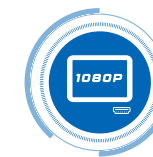
AI 360° Vision



4G Module



Pedestrian &amp; Vehicle Detection



1080P HDMI Display



Proprietary platform



3D/2D Switching

### Features:

Integrates 4-camera seamless stitching, AI real-time pedestrian/vehicle detection (voice alerts), 4G remote monitoring/cloud storage, 1080P HDMI display, optional 16-radar blind spot monitoring, in-cabin/external audible & visual alarms, and smart fleet management support.



AI-360AVM-N4 (4-CH)

Product Parameters	
Version	4G Version, 4-CH AI 360AVM
Video input	4-CH
Video output	HDMI / VGA / AHD / CVBS
Video Compression Format	H264/265
Storage Capacity	SD (8-256GB)/support SSD up to 2TB
Power Supply	12-36V
Display	10.1" HDMI
Resolution	1024*600
Camera Resolution	1080P, 25FPS
FOV	220°
Mounting Vehicle Length	up to 19M



AI-360AVM-N8 (8-CH)

Product Parameters	
Version	4G version, 8-CH AI 360AVM
Video input	8CH
Extended Features	ADAS, DMS, BSD
Video Compression Format	HDMI / VGA / AHD / CVBS
Storage Capacity	SD (8-256GB)/support SSD up to 2TB
Power Supply	12-36V
Display	14.5" HDMI
Resolution	2560*720
Camera Resolution	1080P, 25FPS
FOV	220°
Mounting Vehicle Length	up to 19M



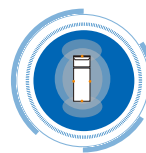
## Integrated 360° AVM- AI



No Control Box



AI 360° Vision

Pedestrian &  
Vehicle DetectionHigh-definition  
TouchOne-click  
Screen Stitching

AI-360AVM-M9

### Features:

- All-in-One Design:**  
No external control box required—integrated AI-powered 360° surround-view system for a cleaner setup.
- Smart AI Detection:**  
Recognizes pedestrians, non-motorized vehicles, and other vehicles for enhanced driving safety.
- HD Touchscreen Control:**  
Features a 10.1-inch touchscreen with one-click stitching and quick calibration for ease of use.
- Built-in Recording:**  
Supports 16GB–512GB SD cards for direct recording without extra devices.

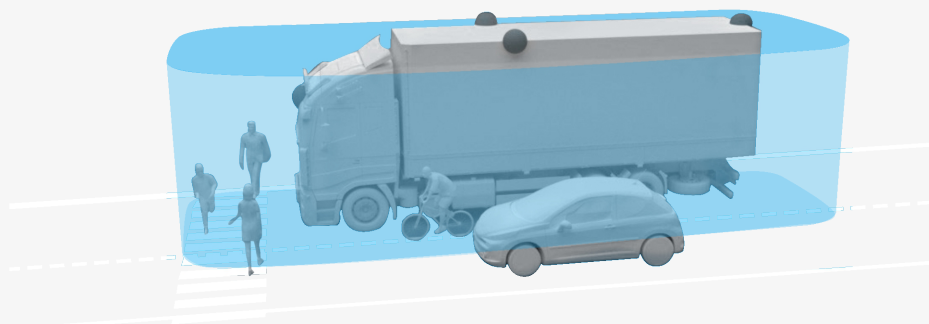
### Product Parameters

Version	Integrated AI 360AVM, Control box free
Video input	4CH
Display	10.1" HDMI (9" optional )
Resolution	1024*600
Camera Resolution	1080P, 25FPS
FOV	220°
Video Compression Format	H264/265
Storage Capacity	SD (16-512GB)
Power Supply	12-36V
Mounting Vehicle Length	up to 15M

## Integrated 360° AVM (None AI)



360AVM-M9

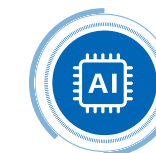


## AI BSD CAMERA

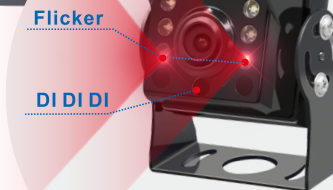
PJ-AUTO's AI Pedestrian Warning Camera System integrates advanced AI detection technology with real-time alert mechanisms to enhance safety for both pedestrians and drivers. Designed for commercial vehicles, this system combines high-precision detection, customizable warning zones, and multi-format output options to minimize accidents and improve situational awareness.

- ✓ Dual Alerts - Visual/audio warnings
- ✓ AI-Powered Object Detection (Pedestrians, Vehicles)
- ✓ Custom Zones - Adjust detection areas
- ✓ Multi-Format Output - AHD / CVBS compatibility

## Pedestrian warning AI Camera

Human & car  
detectionBuilt-in  
flickering lightAdjustable  
alarm zone

AI Chip



PJ-221AI

### Features:

- AI Detection:**  
Powerful AI sensor and big-data algorithm ensure a detection rate above 90%, accurately detecting pedestrians and vehicles while providing real-time risk alerts.
- Pedestrians Warning :**  
Built-in flickering light and buzzer to alert pedestrians upon detecting cars and humans.
- Driver Warning:**  
Flickering light and flashing buzzer to alert drivers upon detecting cars & humans.
- Adjustable settings:**  
Adjustable settings for warning zone, car and human detection, and output frame rate etc. via keyboard.

### Product Parameters

Ai Camera	720P W/ AI detection
Computing Power	0.5T
Detection Object	Human & cars
Detect Distance	around 12m
Alarm Method	beep sound & voice
Video Signal	AHD
Frame Rate	25fps
FOV	120°H
Protection Level	IP69K
Power Supply	12V (24V optional)
Working Temp.	-20~70° C

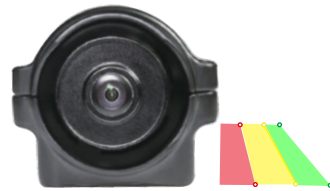
## AI BSD Camera( Configurable Zone )

Rear



PJ-202AI

Side



PJ-223AI

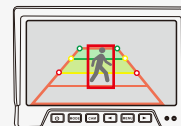
- Detection Zone Adjustment,
- Human or Vehicle Selection

Alarm zone adjustable  
by App(wireless)



Phone

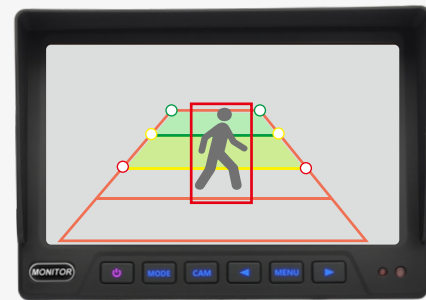
Alarm zone adjustable  
by keyboard (wired)



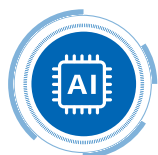
Monitor

## AI BSD Camera COMBO

By combining big data-trained AI, active hazard alerts, and user-friendly controls, this system delivers a proactive safety solution tailored for commercial vehicles—minimizing accidents, improving compliance, and protecting assets.

AI Camera  
setting by Monitor

PJ-213AI-CB

Human & car  
detectionAudible-  
Visual AlarmAdjustable  
alarm zone

AI Chip

### Features:

#### •Advanced AI Detection & Warning:

Utilizes a high-performance AI chip trained on vast datasets to ensure accuracy in detecting cars & human.

#### •Active Alarm System:

Real-Time Alerts: Instant visual and audible warnings to alert drivers / pedestrians of nearby hazards.

#### •Customized Alarm:

Customizable Features: Detection Zone Adjustment, human & car detection setting, output frame rate operational.

### Product Parameters

Ai Camera	720P W/ AI detection
Computing Power	0.5T
Detection Object	Human & cars
Detect Distance	around 12m
Alarm Method	internal buzzer & external alarm
Fov	150°H
Protection Level	IP69K
Monitor	7" IPS
Resolution	1024*600
Video Input	2-CH
Power Supply	12-36V

## AI Dashcam

1080P



Support extra 2 camera



Camera1

Camera2

### Function:

#### •Advanced Safety Algorithms:

Integrated ADAS (FCW+LDW+HMW+PCW) and DMS for collision/drowsiness alerts.

#### •Smart Connectivity & Navigation:

Built-in 4G, GPS, Wi-Fi; supports external GPS for real-time tracking.

#### •High-Capacity Recording:

512GB SD card storage (H.264/H.265 video format) with 3-axis G-sensor for event detection.

#### •Multi-Channel Camera Support:

Standard 3CH surveillance, support extended to 4CH.

#### •Robust & Versatile Design:

Wide voltage (9-36V) and temperature range (-20°C to +70°C); includes RS232 port for expandable functions.



### Product Parameters

Support	WIFI/3/4G
ADAS	FCW+LDW+HMW+PCW
Camera	3ch/4ch Optional
GPS	Support External GPS
Video format	H.264/H.265
G Sensor	Built-in 3-axis acceleration sensor
TF card	Supports up to 512GB TF cards
Voltage	9~36V
Temperature	-20°C to +70°C



## AI Intelligent MDVR System



### DMS



Phonecalls  
(> 95%)



Smoke  
(> 95%)



Face detection  
(> 95%)



Absent driver  
(> 99%)



Distraction  
(> 98%)



Fatigue  
(> 98%)

### ADAS



FCWS



LDWS



Pedestrian  
detection

### BSD



Pedestrian  
detection



Vehicle  
detection

### Function:

#### •High-Performance Video Processing:

Linux processor with H.265/H.264 decoding for efficient storage and bandwidth, providing clear 1080P video recording.

#### •Remote Connectivity & AI Features:

Includes 3G/4G/WiFi for mobile/PC access (live view, playback, OTA updates) and features GPS/RTX for tracking. AI algorithms (ADAS/DMS/BSD) are standard to enhance monitoring capabilities.

#### •Multi-Channel HD Input & Compatibility:

Supports 8-channel 1080P AHD inputs and is compatible with 960P, 720P, CVBS, and other formats for versatile surveillance integration.

#### •Advanced Storage & Data Protection:

Includes media+amplifier zone storage technology to avoid disk issues and data loss, supporting up to 4TB SATA HDD and 1TB SD card for large storage.

Product Parameters	
Processor	Linux
Memory	8GB DDR4
ADAS Algorithm	Lane departure, pedestrians, vehicle distance
DSM Algorithm	Driver fatigue, smoking, phone use, obstructions
BSD Algorithm	Pedestrian detection in left & right blind spots
Video Input	8 channels 1080P (backward compatible), CVBS input
Video Output	HDMI x1, VGA x1, CVBS x1 (RCA + M12 1.0Vp-p 75Ω)
Video Compression Format	H.264/H.265
Preview Function	Single/2/4/6/8 Split + Manual/Alarm Full-Screen
Recording Resolution	Selectable: 1080P, 720P, D1
Recording Quality	Selectable: Ordinary, Standard (default), HD, UHD (4 levels)
Recording Mode	Automatic on power-up, scheduled, alarm recording
Power Supply	12-36V
Working Temp	-30°C ~ +70°C
Display	10.1" HDMI monitor

## Specialized Cameras



Auto Heating



Fisheye  
Correction



1080P  
720P



RGB IR



IP69K  
Waterproof



12/24V

## RGB IR Camera



PJ-228R



RGB IR



Full-Color  
Night Vision



WDR

### Features:

#### •Full-Color Night Vision Technology:

Captures more light information in low-light environments to deliver realistic color images.

#### •No IR Cut Required for Night Vision Switching:

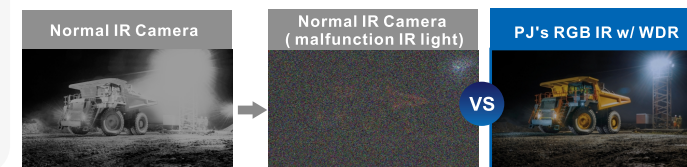
Utilizes RGB IR technology to switch between day and night modes without an IR cut filter, maintaining image clarity and enhancing product stability and durability. Ideal for automotive applications or high-vibration environments.

#### •Wide Dynamic Range (WDR):

Automatically balances lighting to optimize details in overexposed or shadowed areas.

#### •Enhanced Image Clarity:

Infrared light penetrates obstacles like smoke and fog, improving image sharpness and contrast.



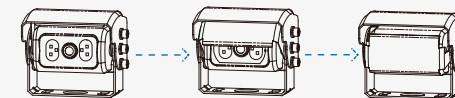
## Auto Shutter Camera



PJ-238



PJ-238B



### Features:



Auto Shutter



IP69K  
Waterproof



WDR



Wide Voltage

#### •Smart Triggered Start/Stop:

Automatically powers on/off with reverse gear, synchronizes sunshade opening/closing, exposing the lens only during operation to reduce energy consumption and standby wear.

#### •Instant Activation Without Delay:

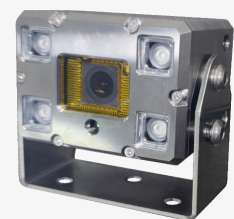
Activates instantly upon gear shift, transmitting HD footage to the screen in real time for safe reversing.

#### •Active Protection Mechanism:

Fully seals the lens when not in reverse, blocking dirt, rain, and snow to extend device lifespan.



## Extreme Weather Proof Camera



PJ-255



Fast Auto Heating



Fire Prevention



Weather Proof

### Features:

- Efficient Defrosting & Anti-Fog:**  
Built-in heating elements for fast auto heating lens while frost/ice/fog buildup, ensuring clear imaging in low-temperature environments.
- All-Weather Durability:**  
IP69K-rated waterproof, dustproof, and shockproof design, adaptable to harsh conditions like rain, snow, and dust storms.
- Vibration-Resistant Design:**  
Built-in shock absorption technology ensures stable operation during vehicle bumps or vibrations.
- Temperature Resistance:**  
Energy-efficient heating system extends battery life/durability while minimizing energy use.

Before Heating



Automatic Heating



After Heating



## HD Stainless Steel Cameras



PJ-251B



PJ-251C



PJ-253



PJ-244



PJ-229

### Features:

- Strong Corrosion Resistance:**  
Stainless steel material has excellent corrosion resistance, capable of long-term use in harsh environments such as humidity and salt spray without rusting.
- High Durability:**  
The stainless steel structure provides high mechanical strength and durability, able to withstand vibrations and impacts that may occur during vehicle operation.
- Weather Resistance:**  
Designed to withstand extreme weather conditions, including rain, snow etc, ensuring reliable operation in any situation.
- Temperature Resistance:**  
Capable of operating in extreme temperature conditions; the camera maintains good performance in both high and low-temperature environments.

### Suitable For The Industry:



Mine



Garbage Truck



Tanker truck



Boat

## HD 180° SW Camera



PJ-251



Super Wide Angle



Fisheye Correction



Corrosion Resistance

### Features:

- Professional Wide-Angle Distortion-Free:**  
Eliminates vignetting, blind spots, and fisheye effects, restoring true-to-life visuals to enhance driving safety.
- Vibration-Resistant Structure:**  
High stability optimized for automotive and high-vibration scenarios.
- HD Night Vision**  
Captures clear images and key details even in low-light conditions.
- All-weather durable design:**  
Made with a stainless steel casing, featuring fireproof and corrosion-resistant properties, capable of withstanding various extreme environments.



SW-254



SW-228



SW-216S



SW-213B

## Other SW Cameras

- 180° Ultra-Wide Angle View
- W/ Professional Fisheye Correction
- Wide Voltage

## 4MP 180° SW Camera



### Features:

- 4MP Ultra-HD Resolution:**  
Delivers crisp 2560×1440 pixel imaging for critical scene capture, even at high speeds.
- 180° Ultra-Wide Angle with Zero Distortion:**  
Advanced optical correction eliminates fisheye effects and blind spots, providing full panoramic coverage for safer lane changes, reversing, and traffic monitoring.
- Superior Low-Light Performance**  
Equipped with WDR (Wide Dynamic Range), and starlight sensor technology to ensure clear visuals in dark environments or harsh backlight conditions.

## Brake Light Cameras



Brake light camera use for JAC

PJ-237-22



Mercedes Sprinter / VW Crafter brake light camera use for 2007-2019

PJ-237-01



FIAT Ducato brake light camera use for late 2006-2017 3 gen, Peugeot Boxer, Citroen Jumper, etc.

PJ-237-02



GM Express & Chevy Savana cargo VAN Camera

PJ-237-03

## TVI Cameras



TVI (Transport Video Interface) cameras provide a cost-effective solution for upgrading older analog systems while delivering high-definition video over existing coaxial cables. They are ideal for long-distance transmission and offer hassle-free installation for commercial vehicles.

**Features:**

- **Zero-Latency Monitoring:**  
Provides real-time video feed, essential for applications such as reversing and parking assistance.
- **Long-Distance Transmission:**  
Transmit video signals up to 500 meters without quality loss, perfect for long vehicles like buses and trailers  
Perfect combination with 180° super wide angle FOV.

## LVDS Cameras



LVDS (Low Voltage Differential Signaling) cameras are designed for high-performance video transmission in harsh environments.

**Features:**

- **High Resistance to Interference :**  
Employs differential signaling to minimize electromagnetic interference, ensuring stable video quality in complex electronic environments.
- **Real-Time Lossless Video Transmission :**  
Supports full HD video transmission (720P/1080P) with minimal latency.
- **Extreme Environment Adaptability :**  
Operates effectively in temperatures ranging from -40°C to 85°C, making it ideal for long-term outdoor use.

**LVDS camera project:** Fiat, Toyota, Honda...

## IP Cameras



IPC (Internet Protocol Camera) systems utilize advanced network technology for superior image quality and smart features. They are perfect for fleet management, driver behavior monitoring, and providing real-time updates through cloud connectivity.

**Features:**

- **Advanced Network Technology & Real-Time Connectivity :**  
Supports 4G/5G, Wi-Fi, and cloud integration for seamless live streaming, instant data transmission, and over-the-air (OTA) firmware updates.
- **Durability for Harsh Environments:**  
Built with IP69K-rated waterproof/dustproof housings, vibration resistance, for reliability in extreme weather and road conditions.

## AHD/CVBS Camera

12/24V IP69K LED    FC CE E-MARK

● PJ-208N ● PJ-208NW

Mounting: 50\*26mm

NEW MODEL  
● PJ-213B  
50\*30mm● PJ-202  
73\*26\*mm● SW-228  
91\*29mm● PJ-202B  
73\*26mm● PJ-201B  
74\*26\*77mmH● PJ-224  
85\*30\*105mmH● PJ-247B  
85\*30\*105mmH● PJ-223B  
54\*18\*65mmH● PJ-211A  
54\*18\*65mmH

## SIDE VIEW CAMERA

● PJ-212S-W  
58\*80\*45mmH

## SIDE VIEW CAMERA

● PJ-212S-Y  
58\*80\*45mmHSTRAIGHT SCREW  
INSTALLATION  
● PJ-212SN  
58\*80\*45mmHMIRROR WING CAMERA  
(MINI SIZE)

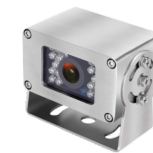
● PJ-225B

WINDOW GLASS MOUNT  
DASH CAMERA● PJ-241  
70\*30\*100mmHMINI SIZE DOME  
CAMERA● PJ-225  
Dia: 44mmWIDE ANGLE  
IR DOME CAMERA● PJ-219  
Dia: 69mmANTI-CRACK  
DOME CAMERA● PJ-230  
100\*100\*63mmH

## DUAL LENS CAMERA

● PJ-209B  
99\*34\*90mmHDUAL LENS  
FLYFISH CAMERA● PJ-210A  
135\*20\*210mmH● PJ-245  
59\*45\*39mmH

● PJ-249

WORK LIGHT  
CAMERA  
● PJ-240  
40\*22\*120mmH● PJ-248  
58\*60\*79mmHEXPLOSION-  
PROOF CAMERA  
● PJ-229  
92\*41\*110mmHSTAINLESS STEEL  
CAMERA

● PJ-244



● PJ-253

FAST AUTO  
HEATING  
● PJ-255

● PJ-256



● PJ-257



# HD Rear view system



## Smart AI Blind Spot Detection

2-CH



PJ-702BSD

### Features:

- **AI-Powered Dual Detection:**  
Accurately identifies humans & cars with 0.5T/CH AI computing power (up to ~15M distance).
- **2-4ch Detection:**  
Support 2-4channel simultaneous detection of pedestrians and/or vehicles.
- **Hybrid Alarms + Local Storage:**  
Supports internal/external alert triggers and 2-CH HD recording (up to 256GB SD).

Product Parameters	
Detect Object	human & car
AI Computing Power	0.5T for each
Detection Distance	around 15M
Detection Channel	2-CH (4-CH available)
Alarm method	internal & external
Monitor	7" IPS, 1024*600
Video input	2CH (4-CH available)
Power supply	12-36V
Recording	2-CH, up to 256G, SD card
Camera	720P HD
Fov	90°H, 120°D
Protection level	IP69K

5-CH



PJ-1010BSD-D

### Features:

- **Multi-Channel AI Dual Monitoring:**  
4-CH AI BSD + 1-CH DMS with integrated detection for humans, cars, and driver behavior.
- **10.1" IPS High-Resolution Display:**  
Large 10.1" screen (1024x600) for clear real-time surveillance and alerts..
- **Hybrid Alarms + Local Storage:**  
Supports internal/external alert triggers and 5-CH HD recording (up to 256GB SD).

Product Parameters	
Detect Object	human & car
AI Computing Power	0.5T for each
Detection Distance	around 10M
Detection Channel	4-CH of AI BSD, 1-CH of DMS
Alarm method	internal & external
Monitor	10.1" IPS, 1024*600
Video input	4-CH Camrea +1 CH DMS
Power supply	12-36V
Recording	5-CH, up to 256G, SD card
Camera	720P HD
Fov	120°H, 160°D
Protection level	IP69K



Other AI BSD Monitors

PJ-700BSD ( 7" )  
(4CH)PJ-1010BSD ( 10.1" )  
(2/4CH)PJ-1011BSD ( 10.1" )  
(4CH)

Flashing Light

PJ-FL01  
(Optional)PJ-FL02  
(Optional)Extendable options:  
Sensor

PJ-BSR-TRK

# HD Rear View System



PJ-702RS



Full 1080P

IPS Full  
ViewAuto Brightness  
Adjustment

12-36V

### Features:

- 7" IPS full-view LCD screen
- 720P HD cameras (1080P optional)
- Built-in light sensor for auto brightness adjustment
- Integrated sunshade for enhanced visibility
- Wide voltage range (DC12-36v) | industrial-Grade PCB with protections: over/under voltage, Reverse polarity, static, surge

#### Product Parameters

Monitor	7" /9" /10.1"
Resolution	1024*600
Brightness	500cd/m²
Video input	2-CH
Power supply	12-36V
Output volt	12V
Camera	720P HD
Fov	90°H, 120°D
Protection level	IP69K

# 4-CH DVR Monitor System



PJ-702QRS



Full 1080P

IPS Full  
ViewVideo  
Recording

4-CH

### Features:

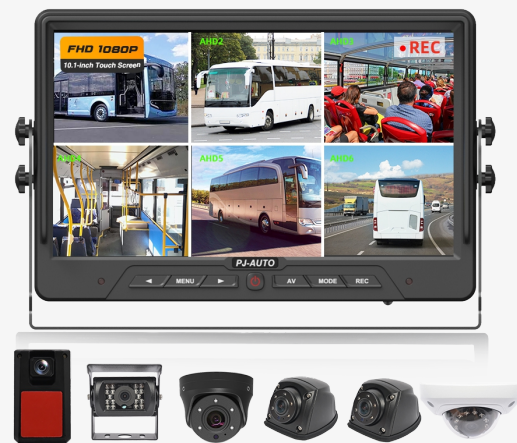
- 7" IPS full-view LCD screen
- Quad HD Input, 4x720P cameras standard (upgrade to 1080P optional)
- Smart multi-screen monitoring, quad-screen real-time display, supports 256GB SD card for continuous recording
- Industrial-grade protection, 12-36V wide voltage input, quadruple circuit protection (over-voltage/under-voltage/reverse polarity/surge)

#### Product Parameters

Monitor	7"IPS
Resolution	1024*600
Video input	4-CH
Power supply	12-36V
Recording	YES, 4-CH
Display mode	Dual / quad split view & full view
Storage	Up to 256G, SD card
Output volt	12V
Camera	720P HD
Fov	120°H, 160°D
Protection level	IP69K



## 6-CH DVR Monitor System



● PJ-1012QRS



### Features:

- 10.1" IPS touch screen, adaptive brightness control via light sensor
- 6-Channel control, multi-layout split-screen (2/4/6 views)
- Built-in recording, 256GB SD card storage capacity
- Industrial-grade robustness, 12-36V wide voltage, 5-in-1 protection (over/under-voltage, reverse polarity, static, surge)

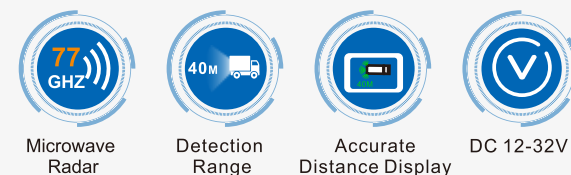
#### Product Parameters

Monitor	10.1"IPS
Resolution	1024*600
Video input	6-CH
Power supply	12-36V
Recording	YES, 6-CH
Display mode	Split view & full view
Storage	Up to 256G, SD card
Output volt	12V
Camera	720P HD
Fov	90°-160°
Protection level	IP69K

## Microwave Radar Monitor Combo



● PJ-702MWR



### Features:

- **Long-Range Radar:**  
77GHz radar detects 0.3-40m, 3-level sensitivity, real-time alerts.
- **Integrated Display:**  
Combines radar + video, connects 4 sensors, no host needed.
- **Smart Reversing:**  
Auto rearview on reverse, silent display while driving, voice alerts for obstacles.
- **Multi-Scene Use:**  
Vehicle/fixed modes, programmable alarms, 3-channel AHD input (CVBS/HD).

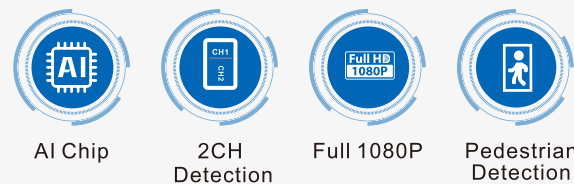
#### Product Parameters

Monitor	7"IPS
Resolution	1024*600
Power supply	12-36V
Sensor type	Microwave Radar, 1pcs
Detection Range	0.3-40m
Display method	overlay to monitor
Output volt	12V
Camera	720P HD
Fov	90°H, 120°D
Protection level	IP69K

## F&S View A-Pillar Monitor Combo



● CMV-158B



### Features:

- **Front & Side Blind Spot Camera System:**  
Combines AI-based pedestrian and vehicle detection for comprehensive monitoring of both front and side blind spots. This integrated system ensures real-time alerts for pedestrians and vehicles, enhancing safety through seamless awareness.
- **1080P Full HD Resolution:**  
Delivers high-definition video output for clear visibility.
- **Adjustable Detection & Alert Range:**  
Supports customization of monitoring zones to meet specific installation and application requirements.

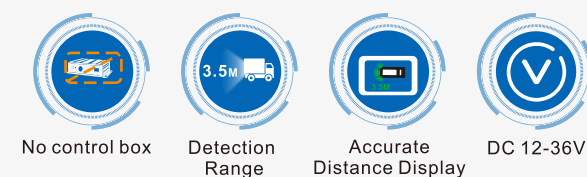
#### Product Parameters

AI Computing Power	0.5T for each
Detect Object	human & car
Detection Distance	around 15M
Alarm method	internal & external
Display	12"
Resolution	1024*600
Video input	2CH
Power supply	12-36V
Recording	2-CH, up to 256GB (TF card )
Camera	720P HD
Fov	150°H, 180°D
Protection level	IP69K

## Ultrasonic Monitor Combo



● PJ-702BSR



### Features:

- **Digital Radar Integration:**  
Radar signals and video overlay, no host required.
- **7-inch HD Display:**  
Real-time display of camera and radar images.
- **0.3-3.5 m Alarm Distance:**  
Range of 0.3-3.5 meters, suitable for different parking modes.
- **Accurate Distance Display:**  
Real-time display of obstacle distance.
- **Wide Voltage Support:**  
DC 12-36V, compatible with various vehicles.

#### Product Parameters

Monitor	7"IPS
Resolution	1024*600
Power supply	12-36V
Sensor type	ultra sonic, 4pcs
Detection Range	0.3-3.5m
Display method	overlay to monitor
Output volt	12V
Camera	720P HD
Fov	90°H, 120°D
Protection level	IP69K

# HD MONITOR



Full Compatibility



Anti-surge



Anti-pulse


Emc Regulation  
Compliant


Wide Voltage


IPS Full  
View

## 1080P AHD Monitors (5" ~ 10.1")



PJ-500HD



PJ-702HD



PJ-714HD



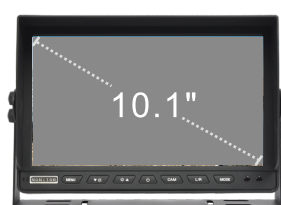
PJ-715HD



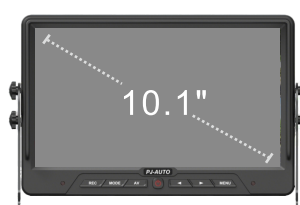
PJ-700WPH



PJ-910HD



PJ-1010HD



PJ-1012



PJ-1010WPH

## 1080P DVR Monitors (7"~11.6")



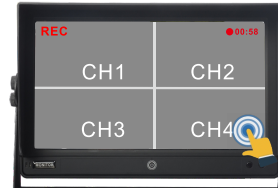
PJ-702HDDV



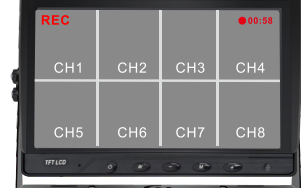
PJ-702HQDV



PJ-1012TQDV



PJ-1013TQDV



PJ-1210HQDV

### Features:

- 5-12" IPS full view display with HD resolution (720p/1080p)
- Full compatibility with diverse camera signal in the market (720P/1080P/ CVBS)
- EMC compliance, electromagnetic compatibility certified, minimizing interference even with high-resolution video transmission
- Protects against voltage spikes, ensuring stable performance in harsh electrical environments.
- Available in single-screen mode, DVR-integrated split-screen view, and IP67 waterproof variants for diverse operational demands

### SPECIFICATIONS

Lcd Size/type	5"/7"/9"/10.1"/12"IPS
Brightness	500+ cd/m²
Resolution	1024RGB(H)*600(V)
Camera Input	2-8CH
Camera Signal	1080P / 720P/CVBS mixed connection ✓
Audio	Optional
Display Mode	Full view image
Auto Brightness Control	✓
Recording Version	2-8CH separate
Sd Storage	8GB ~ 256GB
Compression Coding	H.264/H.265
Recording Resolution	1080P/720P/480P
Power Supply	12-36V
Stable Working Temp	-20°C~70°C
Connector	4PIN Aviation
Bracket	U shape (multiple optional)

## VGA Monitors



PJ-702VG



PJ-910VG

## HDMI Monitors



PJ-702HM



PJ-1010HM

### Product Parameters

LCD Size/Type	7"/9" IPS
Brightness	500+ cd/m²
Resolution	1024RGB(H)*600(V)
Camera input	3-CH
Camera Signal	VGA/CVBS
Audio	Optional
Display mode	Full view image
Auto brightness control	✓
Power Supply	12-36V
Stable Working temp	-20°C~70°C

### Product Parameters

LCD Size/Type	7"/10.1" IPS
Brightness	500+ cd/m²
Resolution	1024RGB(H)*600(V)
Camera input	3-CH
Camera Signal	HDMI/CVBS
Audio	Optional
Display mode	Full view image
Auto brightness control	✓
Power Supply	12-36V
Stable Working temp	-20°C~70°C

## Smart DVR Carplay Monitor



PJ-DVC07

### Features:

- Carplay android Auto,Wireless Mirror Link
- GPS and AUX Function
- Touch Screen LCD Display,with Backup Camera
- Bluetooth 5.0 Makes Driving Safe
- Audio Source Output Via FM Transmitter And AUX
- Easily Install and Mount

## Accessories

### Universal Monitor Mounts:



AC-1001



AC-1002



AC-1003



AC-1004



AC-1005



AC-1006



AC-1007

more...

### Cable accessories:



AC-2001



AC-2002



AC-2003



AC-2004

more...



## 9"OE LVDS Streaming Mirror



● SMM-900

### Features:

- **OE LVDS Design & High-Speed Transmission**  
Factory-designed for automotive OEMs, ensuring seamless integration. <40ms low latency with high-frame-rate support for real-time video.
- **Superior Anti-Interference Performance**  
EMI-resistant differential signaling for stable transmission in complex electrical environments.
- **True-to-Life Imaging**  
Ultra-HD resolution with vibrant colors and high contrast for crystal clear view, WDR/HDR dynamically adjusts to lighting conditions, accurately replicating real-world scenes
- **Robust Reliability**  
High temperature and vibration resistance

## 9.6"1080P Full Display Mirror



● SMM-966B

### Features:

- **Driving Display Mode**  
Driving display mode provides a broadened HD rear view in order to enhance driving safety.
- **Reflective Mirror Mode**  
Which the camera or display should become non-operational.
- **Reversing Mode**  
Reversing mode provides a look-down angle with sufficient field of view for safety.
- **Glare Elimination**  
Camera w/ Sony HDR sensor to eliminate glare.

## 7" Mirror Radar COMBO



● TM-700MWR

### Features:

- **Long-Range Radar:**  
77GHz radar detects 0.3-40m, 3-level sensitivity, real-time alerts.
- **Integrated Display:**  
Combines radar + video, connects 4 sensors, no host needed.
- **Smart Reversing:**  
Auto rearview on reverse, silent display while driving, voice alerts for obstacles.
- **Multi-Scene Use:**  
Vehicle/fixed modes, programmable alarms, 3-channel AHD input (CVBS/HD).

## Other Mirror Monitors



● TM-650 ( 6.5" )



● TM-700QDV( 7" REC )



● TM-700B ( 7" )

### Specification

Brightness	500cd/m <sup>2</sup>
Resolution	1024*600
Display Mode	IPS Screen
Power supply	DC12~36V
DVR	4-way recording

## Wireless System



HD wireless solution



Digital signal



Point to point transmission



Long distance transmission



Low delay signal



Day/night vision

## 2.4GHz HD Digital Wireless System



● WRS-702



2.4GHz HD Digital Wireless



Support 1-4CH Inputs



Video Recording



7"HD IPS

### Features:

- 2.4GHZ HD digital wireless solution.
- Support 1-4CH inputs for HD camera.
- 7"HD IPS display(other size optional).
- RED certification.
- The transmission distance is 250 meters in open conditions, 30 meter for loaded vehicles.

### Product Parameters

Frequency	2.4Ghz
Transmitting Distance	250M in open air
Antenna	5db, extendable
Monitor	7" IPS
Resolution	1024*600
Video input	up to 4
Power supply	12-24V
Recording	YES, 4-CH
Display mode	dual / quad split view & full view
Storage	up to 256G, SD card

## Wireless Zoom System (Tower crane)



● WRS-1014X



30X Zoom



500M Transmission Distance



30M Night Distance



IP68 Waterproof

### Features:

- **30X Zoom:** Optical 30x zoom mechanism, digital anti shake, capable of clear monitoring of distant targets.
- **500M Transmission Distance:** Meets the requirements for long-distance video transmission of lifting machinery and cranes.
- **30M Night Distance:** Equipped with 4 high-power infrared lights, ensuring 30 meter high-definition night vision for night-time site operation.
- **IP68 Waterproof:** Works under all weather conditions.

### Product Parameters

Screen Size	10.1 Inch IPS
Brightness	500cd/m <sup>2</sup>
Zoom Ratio	30
Video Input	4-CH
Compression Coding	H.264
Image Delay	<120ms
WiFi Service Fren	24020-2483.5AHZ
Waterproof	IP 68
Working Voltage	DC 12-24V
Working Temperature	-10°C~+60°C



## HD Wireless System (Forklift)



### Features:

- 120M: Stable signal transmission up to 120 meters.
- Forklift-specific design: Compact and mini in size, and can be easily installed on a slim forklift arm.
- Magnetic housing: Equipped with magnetic housing camera, no need for wiring.
- Waterproof & Shock-resistant: IP69K waterproof, dustproof, shock resistant, durable.

Product Parameters	
Frequency	2.4Ghz
Transmitting Distance	120M
Built-in battery camera	Support 2h/6h operation
External magnetic battery	Support 10h operation
Battery capacity	4500mAh
LCD Size/Type	7"IPS
Brightness	500cd/m <sup>2</sup>
Resolution	1024x600 pixels
Camera input	4-CH
Power Supply	12-24V

## AI Digital Wireless System



### Features:

- **AI-Powered Dual Detection:**  
Accurately identifies humans & cars with 0.5T/CH AI computing power (up to ~15M distance).
- **1-4ch Detection:**  
Support 1-4channel simultaneous detection of pedestrians and/or vehicles.
- **Stable long distance transmission:**  
The transmission distance is 120 meters in open conditions, 30 meter for loaded vehicles.

Product Parameters	
Transmit distance	120M in open air
Frequency	2.4GHz
AI Computing Power	0.5T/1T
AI Detected Objects	Cyclists, Pedestrians, Vehicles
Recognition Distance	15 Meters
Warning Distance	Up to 15 Meters
LCD Size/Type	7" TFT
Brightness	500cd/m <sup>2</sup>
Camera input	4-CH
Power Supply	12-36V

## Accessories for wireless system



## Passenger Vehicle Application



## AI HD Backup Camera Monitor Kit



### 5" AHD AI Blind Spot Camera Kit

- AI Detection - 90%+ accuracy for pedestrians/vehicles
- Specially design to solve front & side blind spot
- Front view:super wide angle view
- Side view:Perfectly solve the visual blind spots on the sides of the vehicle
- High-definition and brightness 5-inch dual split IPS full-view screen

Product Parameters			
Screen	5 inch IPS Full viewing angle	Front Viewing Angle	150°
Signal resolution	720P AHD	Side Viewing Angle	90°
Brightness	600cd/m <sup>2</sup>	TV System	PAL (NTSC optional)
Display Mode	Dual split & full screen display	Power Supply	Cigarette Lighter
Voltage	12-24V	Monitor Bracket	Suction cup & standalone dual-use



### 4.3" AHD Wide Angle Backup Camera Kit

- High-definition and brightness 4.3-inch IPS full-view screen
- 150-degree horizontal wide-angle
- Simple wiring (only connect to reverse trigger, no need to connect to ACC)





## Multiple Format AI Camera



**Output Format**

AHD1080P@25FPS	AHD1080P@30FPS	AHD720P@30FPS	AHD720P@25FPS
TVI720P@25FPS	TVI720P@30FPS	CVBS PAL	CVBS NTSC

8 Ruler Image

AI Chip

Pedestrian & Vehicle Detection

Full Compatibility Adjustment

Adjustable Alarm Zone

PJ-190AI

## HD Wide Angle Camera

**190°+ Ultra Wide Angle HD Multi-mode Camera**

Front/Rear View Switching

AHD/CVBS Switchable

190° Super Wide View

Top View

130° Normal View

Corner Enlarged View


180° View + Corner Enlarged View



### Features:

- Multi-view modes available on one camera
- Switchable to front view by button
- Extra Keyboard for professional parking line and off center image adjustment
- 190° Super Wide View
- IP68 Waterproof & Dustproof

## HD 180°SW Camera



SW-126S

180° Super Wide View

IP68 Waterproof

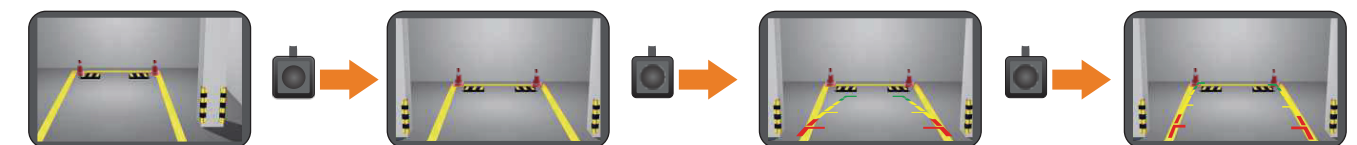
Night Vision

## Off-center Adjusting Camera




### Features:

- Choose the suitable parking line among the pre-set patterns
- Adjust brightness of the image accordingly
- Switch the image horizontally or vertically for different mounting applications
- Available in other PJ camera housings, too.



## Multi-Function Switching Camera



MM-126S

MM-135

PJ-115

PJ-115C

PJ-114CM

Blue: Mirror/Normal Switch  
Purple: Guideline ON/OFF  
Green: Up/Down Switch


AHD/CVBS Switchable

150° Lens

PAL/NTSC Switchable

Night Vision

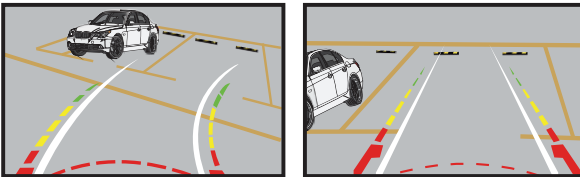
## Universal DynamicTrack Camera



PJ-116DNT

**Features:**

- Perfect combination of real time image and backing track
- Clear image, best night vision and high level water-proof camera



## HD Side View Cameras



PJ-141A-SD

PJ-142-SD

PJ-143-SD



dual mounting design



## Bicycle & Motorcycle Application



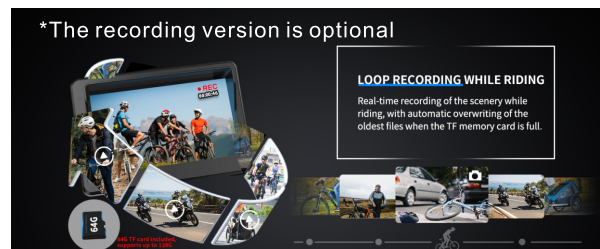
### Bicycle Rear View Camera Kit



#### Features:

- AHD 720P/1080P high-definition
- Specially designed for bicycle
- 4.3" monitor with rear view camera Monitor with inbuilt battery
- Built-in high-capacity 8000mAh rechargeable battery with up to 300 minutes of battery life

\*The recording version is optional



#### Camera model optional:



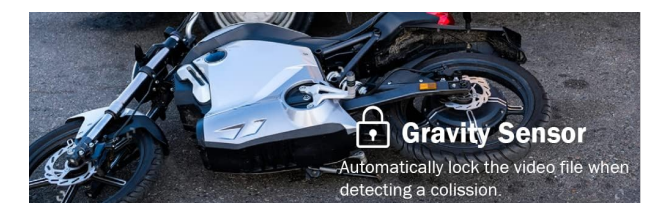
Monitor		Camera	
Screen Size	4.3" HD 720P/1080P	Image Format	AHD
Aspect Ratio	16:9	Effective Pixel	1920H×1080V
Resolution	IPS800(H)×480(V)	Angle	120°
Input Voltage	5V	Power supply	5V
Brightness	1000cd/m2	Cable	3M
Battery Capacity	8000mAh		

## Motorcycle Carplay Monitor With DVR



#### Features:

- Wireless Apple CarPlay & Wireless Android Auto
- Waterproof & Anti-Theft Design
- Dual Bluetooth :Dual channels Bluetooth wireless connection, One for Bluetooth headset or helmet, another for cellphone pairing.
- 5-inch HD IPS Touch Screen
- Dual lens driving recorder: F1080P+R1080P, H.264
- Easy Installation, Fit for All Motorcycle

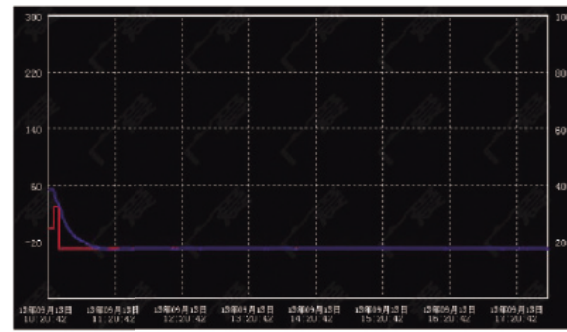


#### Product specifications

Connection	Wireless/wired Carplay & Android Auto Wireless mirror linkTF slot	BT	Dual Blue-tooth 4.2
		FM	Support
Screen size	854*480	WIFI	Support
Screen resolution	5 inch IPS Touch Screen	Brightness	300 cd / m²
Video resolution	F1080P+R1080P, (1920*1080), H.264	Power Supply	12V-30V / ACC start
Camera Angle	D145°/ H115°	Video input	MP3/WMA/WAV/APE/FLAC
GPS tracking	Support	Operating Temperature	-10°C ~ + 60°C
G-sensor	Support	Contrast	1:1000

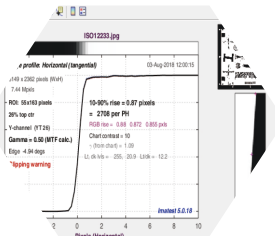
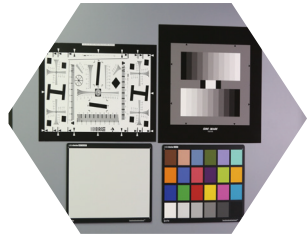


## Internal Lab Test



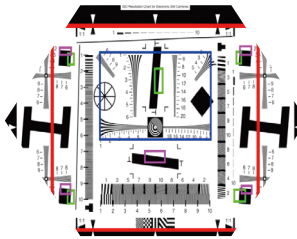
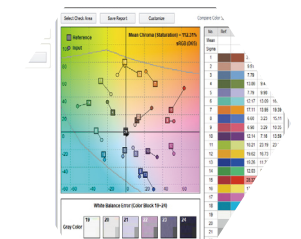
### Environmental test (High and low temperature test)

High & low temperature cycling test, all products must pass -20°C to 70°C working temperature, products for special projects pass -40°C to +85°C working temperature test.

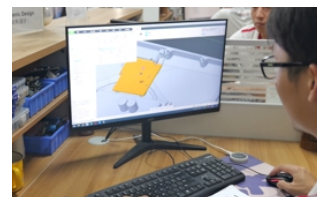


### Dark Room

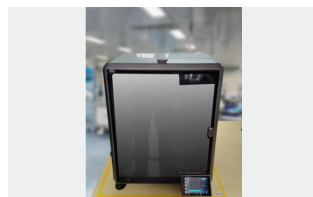
Camera software related tests are conducted in the dark room, such as resolution, colour reproduction, low illumination, white balance, wide dynamic, signal to noise ratio, geometric distortion, etc.



PCB Design



Mechanic Design



3D Printing



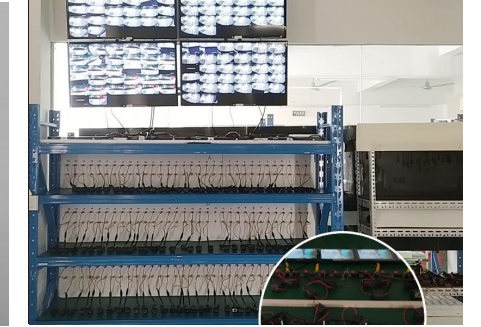
Test Truck

## Internal Lab Test



### Waterproof test:

Soak test: products are soaked in water @ 1-meter-deep water for 1 hr  
Air pressure test: products are put into special chamber to run air pressure test



### Aging test:

4-8 hours continuous power on test at room temp.



### Vibration test:

Vibrate chipsets, PCBA, finished products etc. for 8 hours per axial



### Swing Test



### Salt Spray Test:

Condition: 5%  
Temperature: 35°C



### ESD Test & Modification

1. Electro-contact discharge :  $\pm 4\text{kv}/8\text{KV}$
2. Air discharge:  $\pm 8\text{kv}/15\text{kv}$



### LCD Brightness test

Verify the brightness of the LCD monitor



### FR Chamber

### EMC Pre-scan