

200+ Patent Certificates
\$1,000,000+ Annual Energy Saving
20,000+ Projects Successfully Installed



PLB Series LED Area Light

Shoebox / Parking lot lighting
Power: 100W - 300W



Innovative & Tailored
Lighting Solutions for **Success**
www.aokledlight.com

Features of **PLB** Series



For others & details
please request



· 240W-300W



· 100W-180W



● WARRANTY

5 Year Limited Warranty,
10 Year Preferred Warranty.
Please consult with our sales for detailed agreement.

- Utilizes a precision-engineered lens crafted from optical grade Mitsubishi PMMA to maximize light intensity.
- Features a range of light distributions and designs specifically tailored for parking lots.
- Enhances visual comfort by reducing glare and delivering a wider, smoother, and more uniform light output. Complies with BUG=0 standards.
- Available in various color temperatures: 3000K, 4000K, 5000K, 5700K, and 6500K.
- Utilizes 5050 or 2835 LED sources, offering high lumen output and precise light distribution for increased energy savings.
- Optional minimum Color Rendering Index (CRI) of 70, 80, or 90.
- Cutoff classification ensures no upward light pollution.
- Comes with 6 different mounting brackets for quick and easy installation on various pole styles, streamlining the installation process and saving time.
- Provides the option for customized pole adapters for unique installations, offering greater flexibility and customization during setup.

The **benefits** of opting PLB series



• **Exclusive Lens Replace Design**

A user-friendly lens replacement design for effortless maintenance and component recycling.



• **Professional Distribution Options**

Customized for parking lots, ensuring flawless uniformity with a BUG rating of 0.



• **High Quality Light Source**

Excellent-performance LED chips 5050 or 2835 optional.



• **Reserved Sensor Installation Positions**

Abundant internal space with reserved locations for easy sensor installation.



• **Six Optional Installation Brackets**

Providing flexibility and convenience to meet various installation requirements.



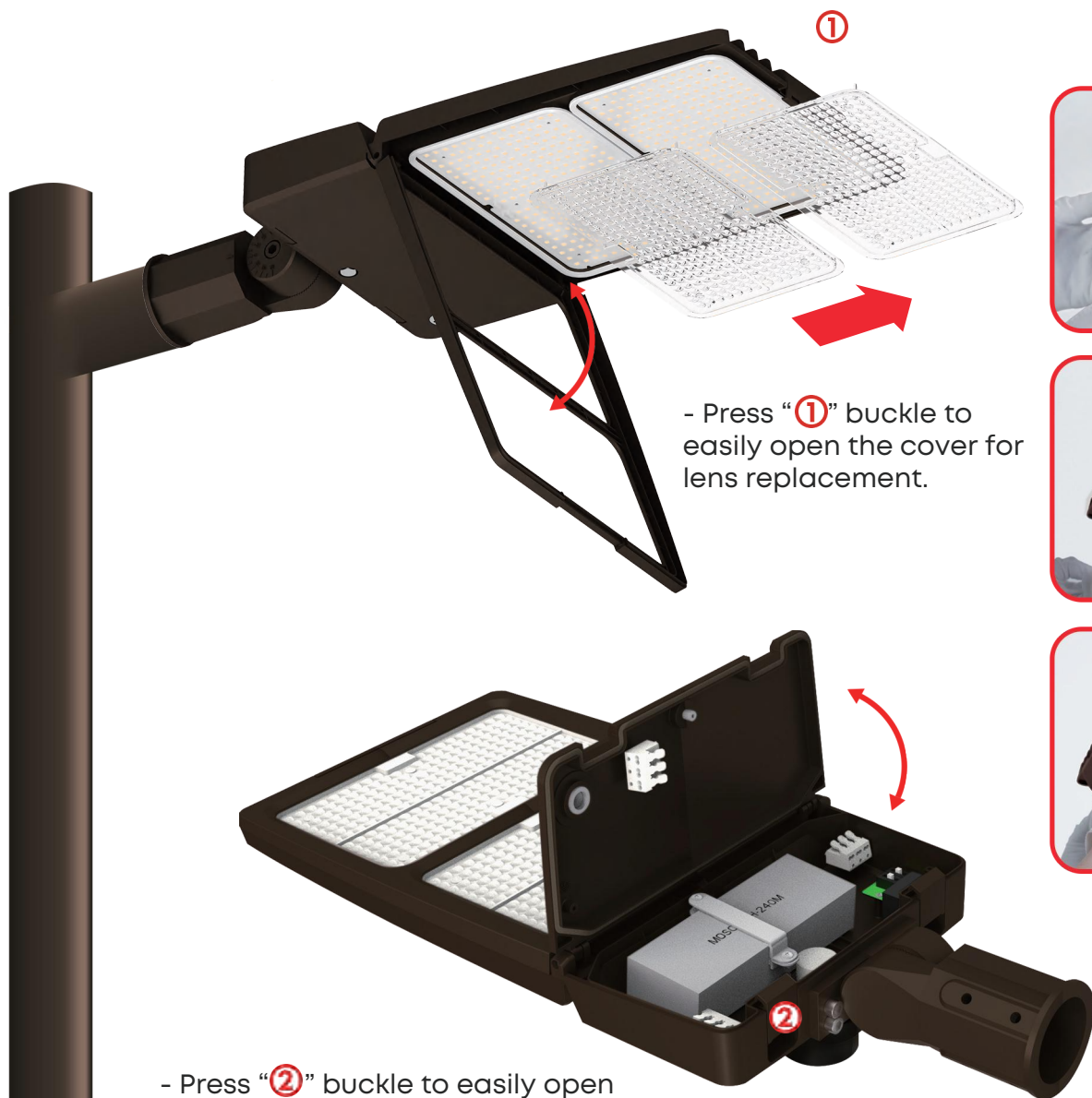
Note: Normal Voltage=100-277VAC, High Voltage=200-480VAC, please evaluate before choosing. For the power supply in the United States and Canada, in case the input voltage fluctuation $\geq 240V$ the High Voltage solution is highly recommended for performance stability. Improper selection will cause damage to the driver or the light.

User-friendly Lens Replacement

Lower Maintenance Costs



A design for lens replacement that is user-friendly, facilitating easy maintenance & recycling of components.



- Press “①” buckle to easily open the cover for lens replacement.



- Press “②” buckle to easily open the driver cover for maintenance.



· High-quality rubber gasket, improved sealing performance.



· High-quality terminal wiring ensures reliability and safety.

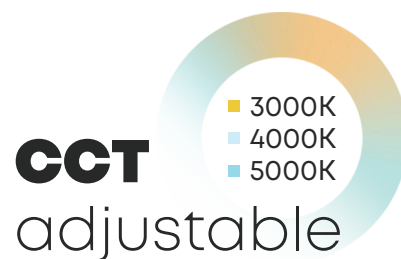
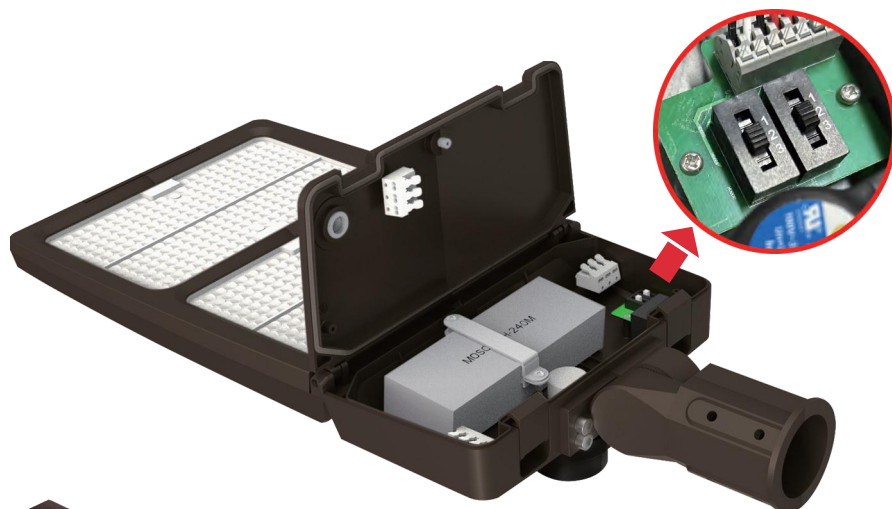


· Enhanced buckle design to make opening and closing simpler and more intuitive.



Change At The Flip Of A **Switch**

- **REDUCE SKUS**
- **INCREASE TURNS**
- **DRIVE PROFITABILITY**

With a simple button press, adjustable CCT LEDs can shift between various white light temperatures, providing a single fixture with multiple tones—from warm to daylight to cool. Instead of ordering lights with different color temperatures, opt for one adjustable CCT product offering multiple options. Install the fixture and customize the color temperature on the spot. This versatility reduces SKUs for contractors while still providing diversity and meeting client needs. Business owners and designers can independently adjust tones to create specific atmospheres and seamlessly coordinate fixtures.

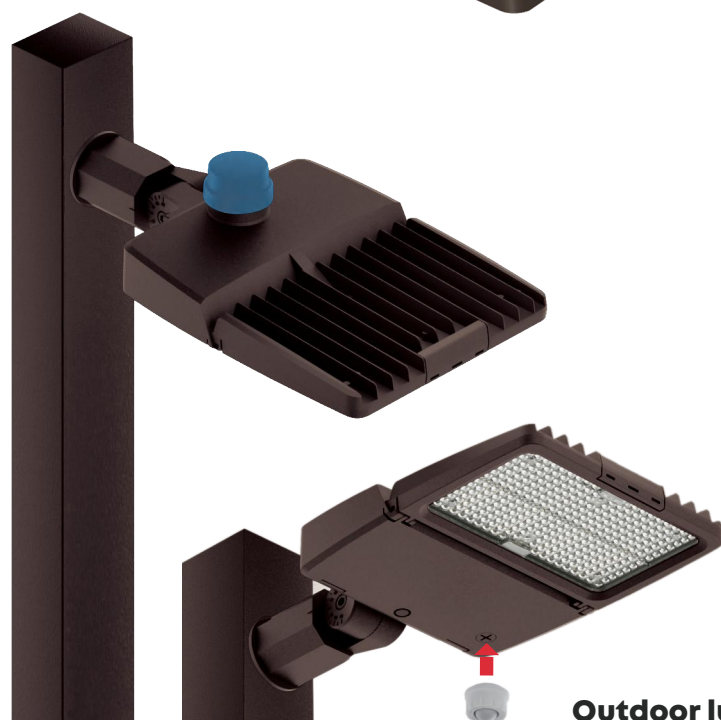


BHD: DIP switch for adjusting power and CCT

A	B	C
75 (W)	100 (W)	150 (W)
		
		
CW	NW	WW

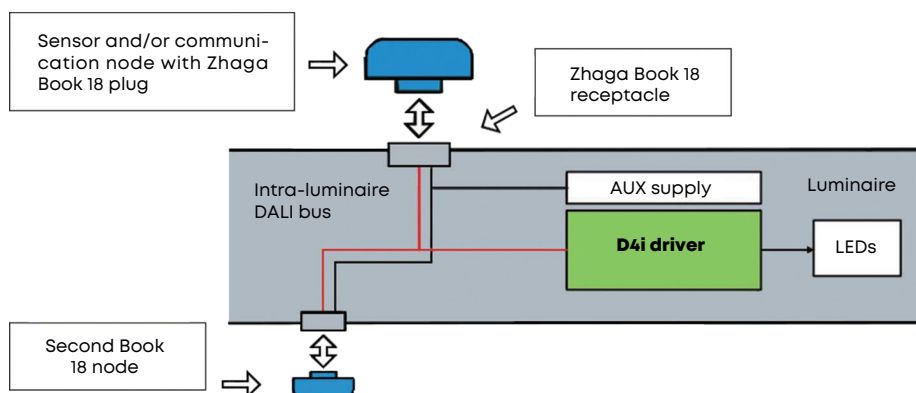
75W(A) - 100W(B) - 150W(C)

CW: White light NW: Neutral white
WW: Warm white



A sensor mounting hole is reserved on the top to facilitate future installation.

Outdoor luminaire with Zhaga receptacles (optional)



Application Reference

- Parking lot lighting
- Riverside & jogging track
- Urban & residential streets
- Bridges
- Bike & pedestrian paths
- Railway stations & metros
- Squares & pedestrian areas
- Tennis court



Parameter Table

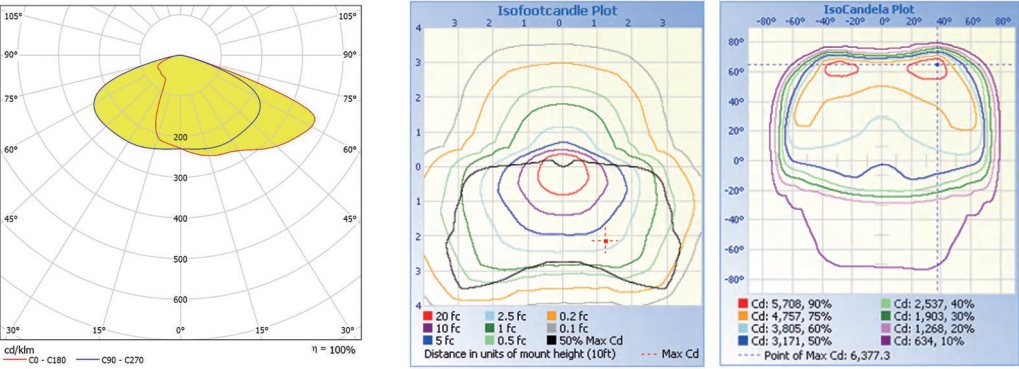
Electrical Specifications					
Model	AOK-PLB100W	AOK-PLB150W	AOK-PLB180W	AOK-PLB240W	AOK-PLB300W
3-in-1 Watt Seletable	60-75-100W	75-100-150W	115-150-180W	180-200-240W	200-240-300W
Input Voltage	Normal Voltage=100-277VAC, High Voltage=200-480VAC, please read *Note-1 before choosing				
PF	≥0.97				
Maximum Current	-				
Control Option	Driver includes wiring for 0-10V dimming systems. Dim as low as 10%.				
Operating Temperature	180W/300W: -40°C to 45°C(-40 °F to 113 °F) Other: -40°C to 50°C (-40 °F to 122 °F)				
Surge Protection	10KV SPD				
Photometric Specifications					
Efficacy (lm/W,Std Dev ±5%) @2835,CRI 70Ra, 4000K	150-160lm/W				
Luminous Flux(lm,Std Dev ±5%) @2835,CRI 70Ra, 4000K	9600-16000lm	12000-22500lm	17500-27000lm	27000-36000lm	30000-45000lm
Efficacy (lm/W,Std Dev ±5%) @5050,CRI 70Ra, 4000K	190-200lm/W				
Luminous Flux(lm,Std Dev ±5%) @5050,CRI 70Ra, 4000K	12000-19500lm	14850-28800lm	22425-33840lm	35000-46320lm	38000-57000lm
CCT	3000K~6500K				
CRI	Ra70 / Ra80 / Ra90				
LED Model	2835, 5050 optional				
Lens	Polycarbonate				
Beam Angle	T401(110°*155°),T402(90°x150°)				
Mechanical Specifications					
IP/IK	IP66/IK10, according to standard EN 60529 and EN 62262				
Vibration Resistance	3G, conform to standard IEC 68-2-6.				
Housing	Heavy-duty die-cast aluminum (EN AC-46100)				
Heat Radiator	Aluminum alloy				
Surface Treatment	Anti-UV thermosetting polyester / Anti-UV thermosetting polyester (for extremely corrosive environments).				
Painting	Black, Custom request				
SCx (EPA)	Top view:0.113168m², Side view:0.029591m²			Top view:0.173087m², Side view:0.0393117m²	
Cable	Pre-wired with a 30 cm cable (Other lengths on request)				
Mounting	Slip fitter(Φ40/60/76mm)/Arm mount/Slide & lock/Square pole/Round pole/Trunnion				
Package Info					
Product Size	20.75*11.97*2.44 inches / 527*304*62mm			27.4*12.44*2.44 inches / 696*316*62mm	
Net Weight	3.2KG			4.0KG	
Carton Size	22.63*13.97*5.71inches / 575*355*145mm			29.33*14.37*5.71inches / 745*365*145mm	
Gross Weight	4.0KG			4.9KG	
Others					
Lifespan	L90B10 - 100 000 h, @Tq 25°C				
Warranty	5 years limited warranty				
Certification	UL,DLC5.1,FCC				
Application Field	Parking lot lighting,Riverside & jogging track,Urban & residential streets, Bridges,Bike & pedestrian paths, Railway stations & metros, Squares & pedestrian areas, Tennis court				
Important Note!	The provided information is solely for reference; the official measurement report holds higher authority.				

* Note-1: For the power supply in the United States and Canada, in case the input voltage fluctuation ≥240V the High Voltage solution is highly recommended for performance stability. Improper selection will cause damage to the driver or the light.

Ordering Information

AOK								
WATTS	VOLTAGE	LED CHIPS	TYPE OF SENSOR	CCT&CRI	DISTRIBUTION	MOUNT	HOUSING	OPTIONS
100W	NV=100-277V	A2=2835	00=Without Sensor	2770=2700K 70CRI	T401(110°x155°)	A=Slipfitter	BK=Black	10KV SPD
150W	HV=200-480V	A5=5050	PH=Photocell	3070=3000K 70CRI	T402(90°x150°)	B=Adjustable Arm		
180W			DV=Dimmable	4070=4000K 70CRI		D= Slide & Lock		
240W			PIR=PIR sensor	5070=5000K 70CRI		E= Square Pole		
300W				5770=5700K 70CRI		F= Round Pole		
60-75-100W				6570=6500K 70CRI		G= Trunnion		
75-100-150W				2780=2700K 80CRI				
115-150-180W				3080=3000K 80CRI				
180-200-240W				4080=4000K 80CRI				
200-240-300W				5080=5000K 80CRI				
				5780=5700K 80CRI				
				6580=6500K 80CRI				

Photometry & Illuminance Diagram



T402 90°X150°

Brackets Installation Options

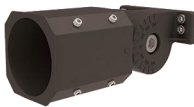
Suitable for different installation scenarios, quickly adapt to the needs of the project. Convenient and Flexible.



Type A
Slipfitter
(Φ40mm)



Type A
Slipfitter
(Φ60mm)



Type A
Slipfitter
(Φ76mm)



Type B
Adjustable
Arm Mount



Type D
Slide & Lock
Mount



Type E
Square Pole
Mount



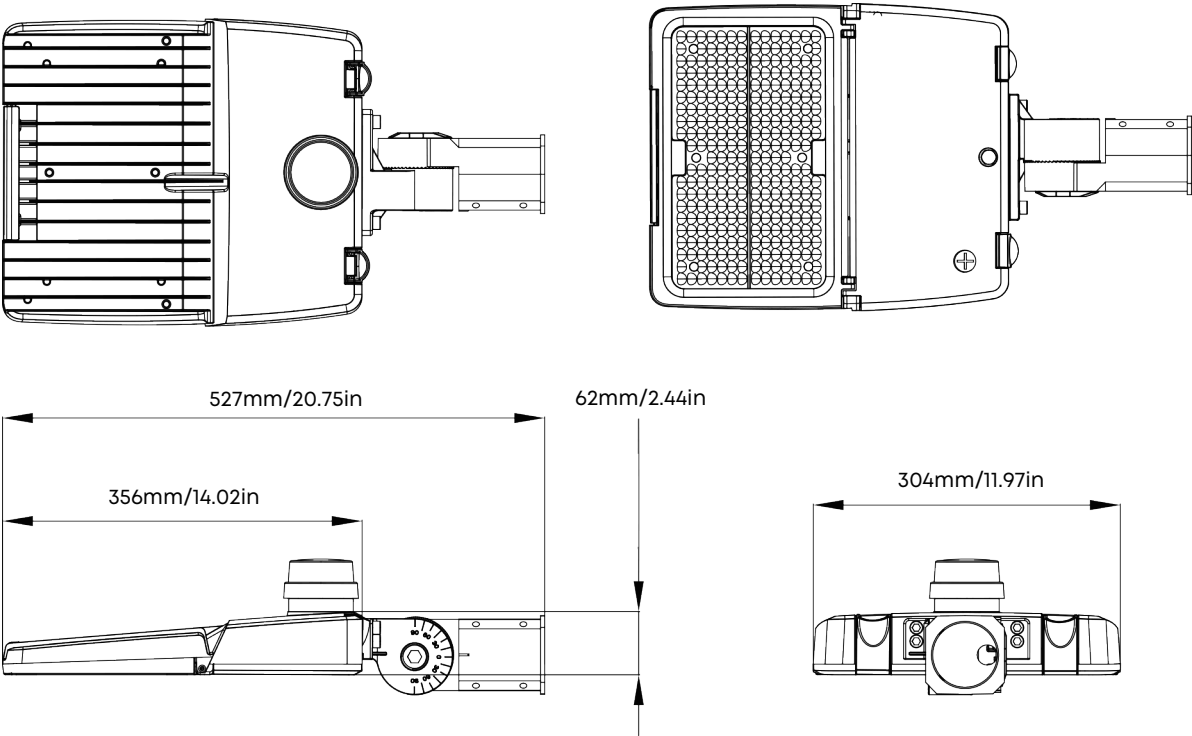
Type F
Round Pole
Mount



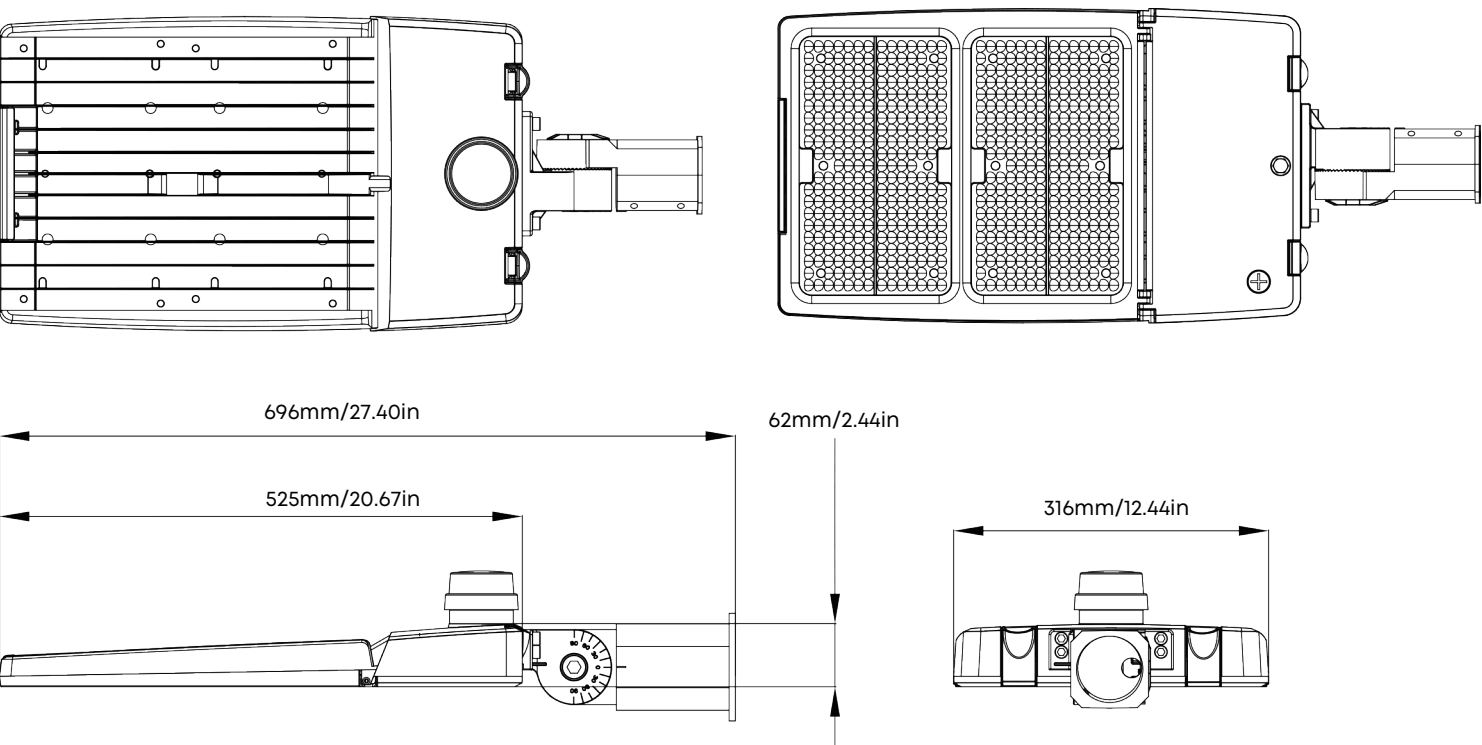
Type G
Trunnion
Mount

Dimensions

100W-180W



240W-300W





Innovative & Tailored Lighting Solutions for **Success**



5 Year Limited Warranty,
10 Year Preferred Warranty.
Please consult with our sales for detailed agreement.

wally@aokledlight.com
www.aokledlight.com
+1 626-986-4050 (US)
+86 755 2357 9148 (CN)

Manufacturing:

Shenzhen:

Building 1 & 4, St. George's Science and Technology Industrial Park, Shajing Street, Shenzhen, China, 518124.

Huizhou:

Building 2, Yinghui Electronic Science and Tech Park, No. 6 Dongsheng North Rd, Chenjiang Street, Zhongkai High-tech Zone, Huizhou, China. 516006.

Philippines:

128 North Science Avenue SEZ Laguna Technopark, Binan City, Laguna, Philippines.

Fuzhou Office:

Room 301, Yujing Business Center Zone 1, No. 12 Baihuazhou road, Cangshan district, Fuzhou, China, 350007

Copyright ©2025 AOK Industrial Company Limited. All Right Reserved.