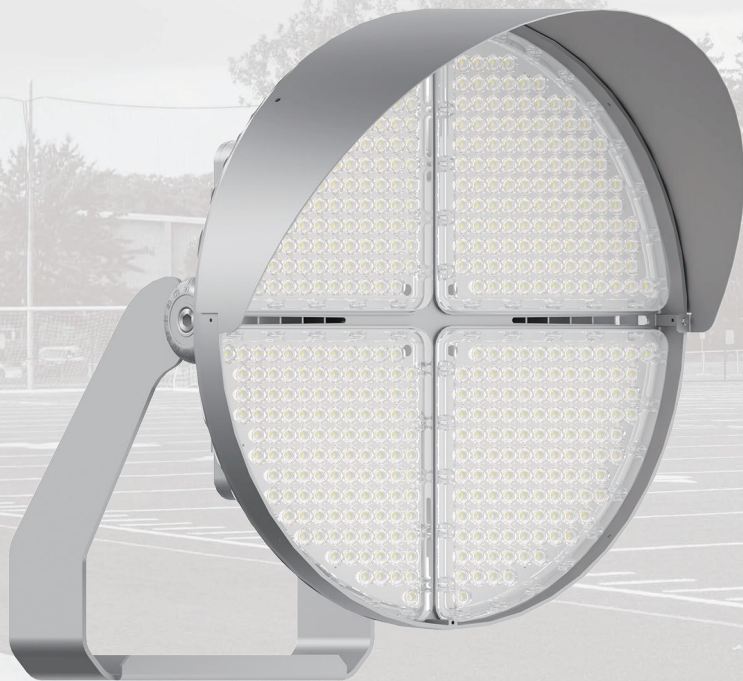


200+ Patent Certificates
\$1,000,000+ Annual Energy Saving
20,000+ Projects Successfully Installed



INS Series LED Stadium Light/Sports Light

Power: 315W - 720W



Innovative & Tailored
Lighting Solutions for **Success**
www.aokledlight.com

Features of **INS** Series



For others & details please request



Safety rope
as standard



WARRANTY

5 Year Limited Warranty,
10 Year Preferred Warranty.
Please consult with our sales for detailed agreement.

The PC lens uses a matrix full light-cutting design with a concave light-retaining wall to remove excess light and improve light range.

The fixture body features a sleek, streamlined design with fin-type heat dissipation and convection vents for optimal cooling, enhancing its lifespan.

Multiple installation and power supply options (external or internal) are available to suit different needs.

A reserved induction mounting hole allows for additional functionality and future upgrades.

IP66-rated waterproof design with a high-resistance silicone ring ensures superior protection.

The robust bracket can support over 10 times the fixture's weight, offering a higher safety factor than competitors.

The **benefits** of opting INS series



• **High Lumen Output**

High-performance LED Efficacy up to 170lm/W , fewer luminaires installation.



• **Modular Design**

Modular construction,hassle-free upkeep.



• **Exceptional Impact Resistance**

IK10,Passed 5G Shock Resistance Test.



• **Light Visor Optional**

Anti-glare Design, control light pollution.



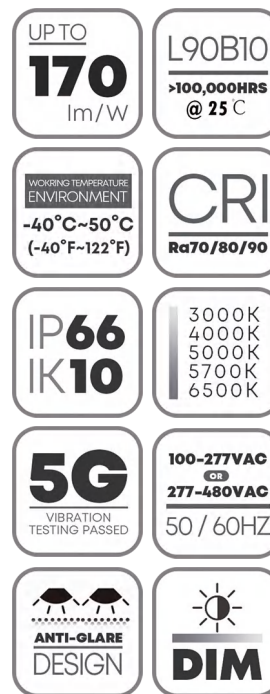
• **Flexible Installation**

4 Installation Methods Optional, Flexible adaptation to installation scenarios.



• **Professional Optic Design For Sports**

Multiple light distribution options available, professional simulation design.



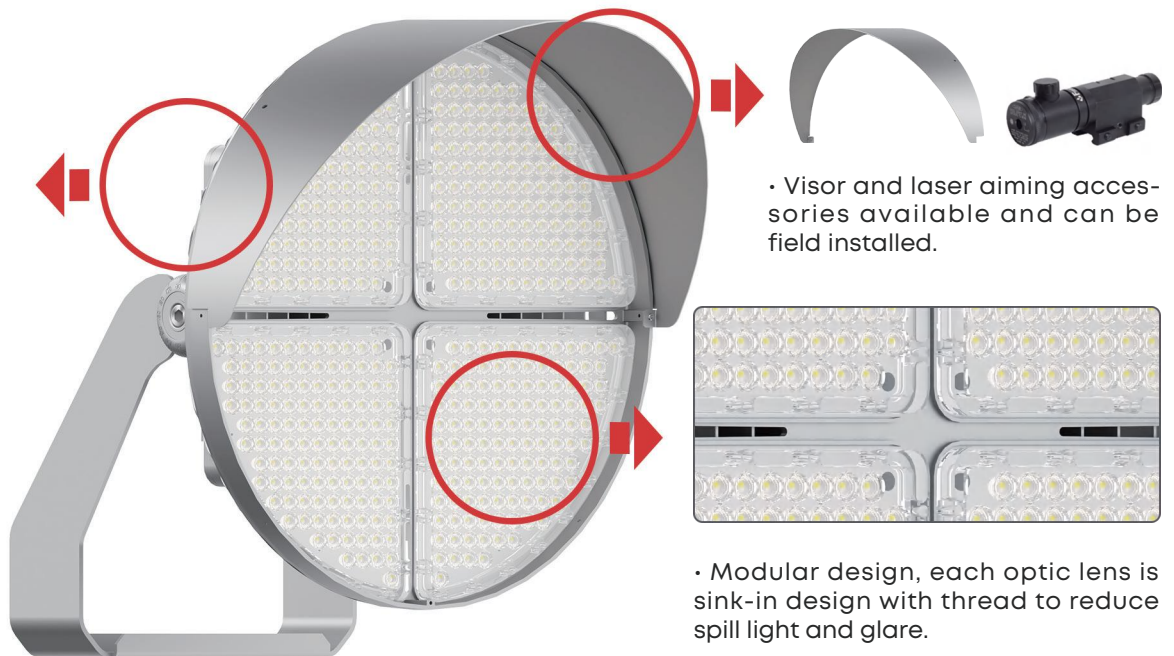
Note: Normal Voltage=100-277VAC, High Voltage=277-480VAC, please evaluate before choosing. For the power supply in the United States and Canada, in case the input voltage fluctuation $\geq 240V$ the High Voltage solution is highly recommended for performance stability. Improper selection will cause damage to the driver or the light.

Photometric Design

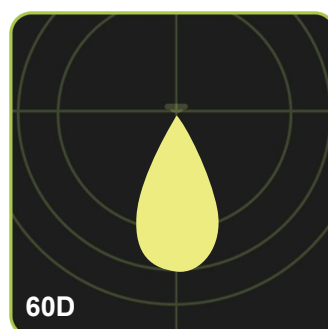
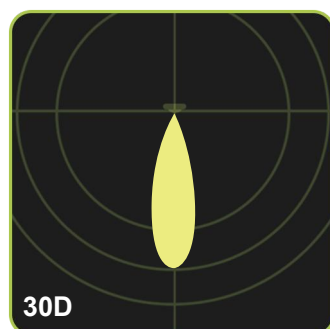
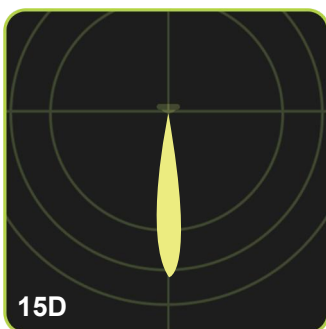
- Glare can cause problems for athletes and nearby residents. Spillover light causes light pollution in the night sky.
- Solving the problem of reducing light pollution is the primary mission of our product design. While providing a brighter lighting system for the site, we were also concerned about how to reduce the disturbance to the surrounding environment.
- Effective control of light can better reflect the energy conservation and environmental protection of LED lighting equipment. The low glare design of the INS series allows for effective control of light and direction, providing greater comfort for athletes on the field, a better spectator experience, and minimizing light pollution.



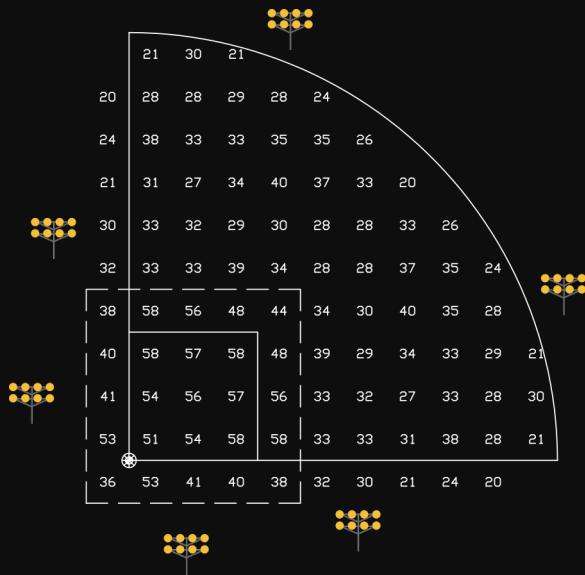
- Integral driver (INS-B) with passive cooling technology. Driver housing is easily accessible and swings open to allow for access to components including driver dimming leads.



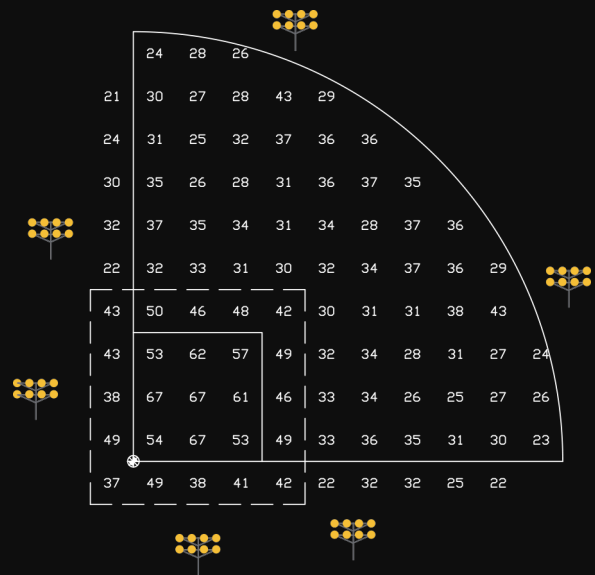
- Accurate light distribution for different project needs.



TYPICAL LAYOUT BASEBALL FIELD WITH 6 POLE DESIGN



Fixture: 1500W HID
 Fixture Count: 46
 Average Light Level: 50fc (infield) 30fc (outfield)
 Total Wattage: 74,150W



Fixture: 720W INS
 Fixture Count: 44
 Average Light Level: 50fc (infield) 30fc (outfield)
 Total Wattage: 31,680W

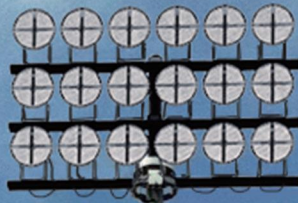
- Glare & light pollution
- Light spills out

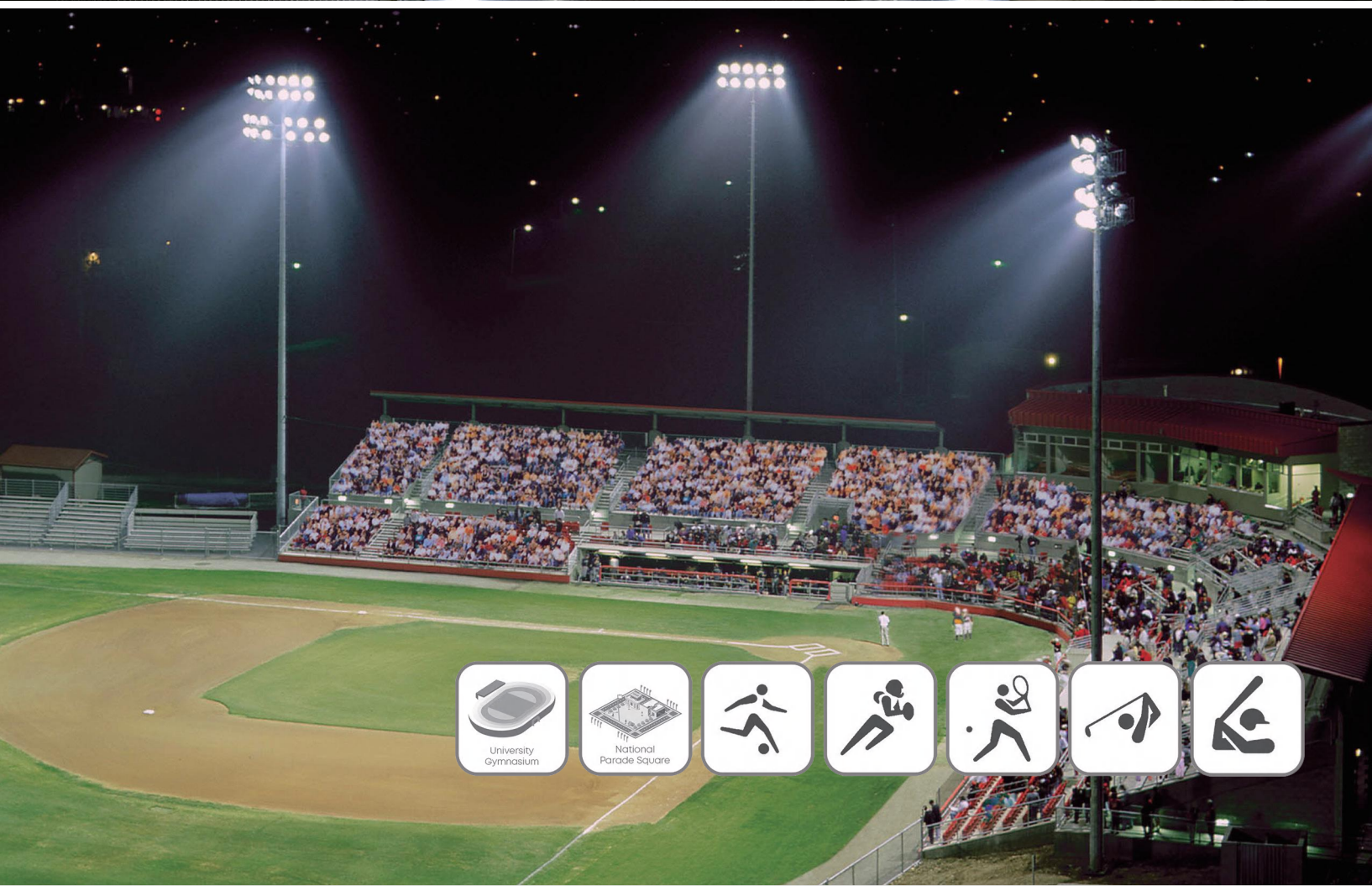
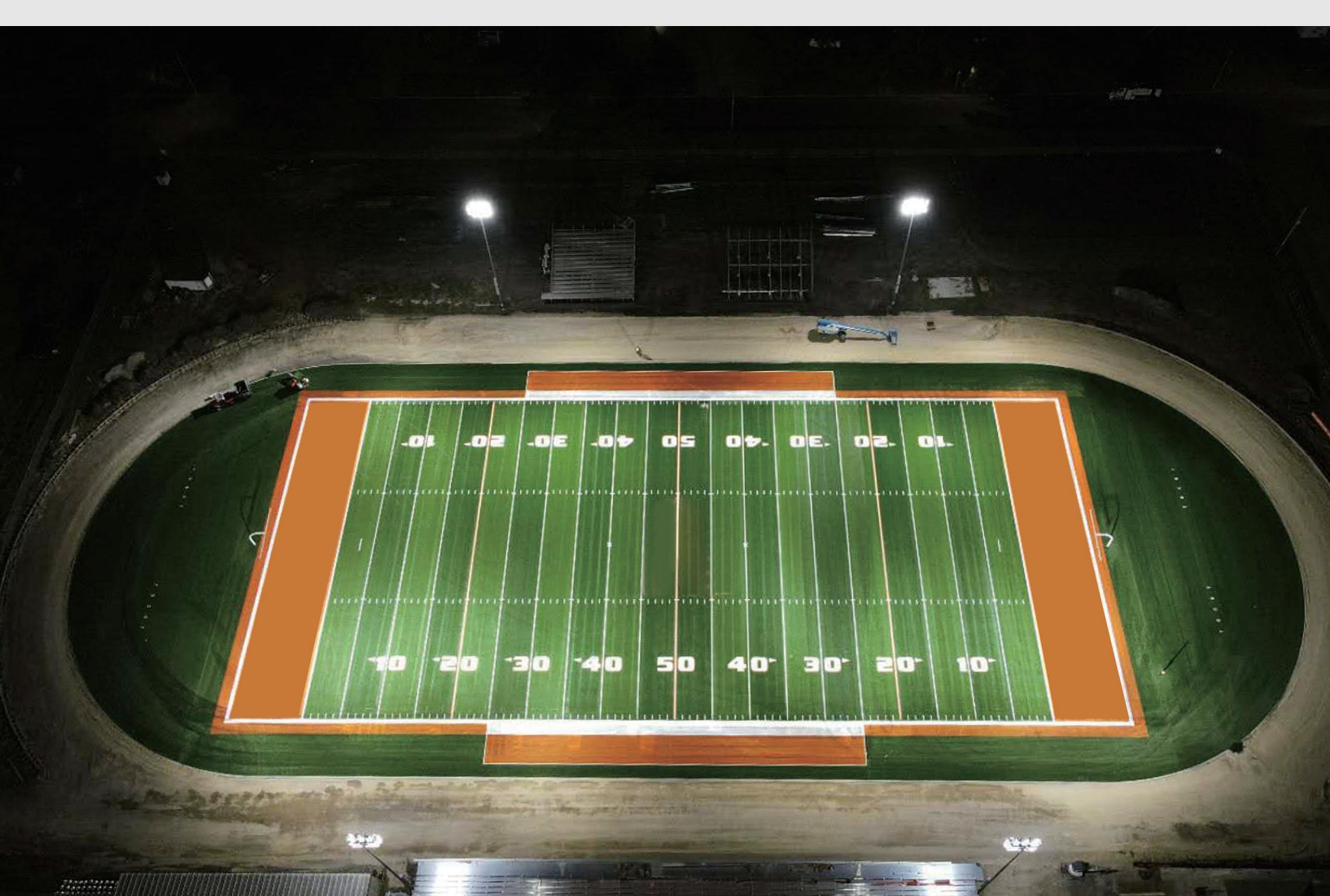
- Comfortable uniform lighting effect
- No upper light pollution
- Better visual experience



Application Reference

- Stadium
- Sports field
- Port
- Railway station

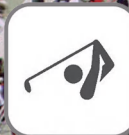




University
Gymnasium



National
Parade Square



Parameter Table

Electrical Data						
Model	AOK-315WiNS		AOK-380WiNS	AOK-460WiNS	AOK-580WiNS	AOK-720WiNS
Power(W)	315W		380W	460W	580W	720W
Input Voltage	Normal Voltage=100-277VAC, High Voltage=277-480VAC, please read *Note-1 before choosing.					
THD	< 20%					
PF	> 0.90					
Control Option	DALI, 1-10V/PWM/Timer dimming, Nema, Zhaga/Presence detection sensor.					
UGR	<19					
Operating Temperature	-40°C to 50°C (-40 °F to 122 °F)					
Driver Brand	Meanwell/Inventronics					
Surge Protection	10kV/20kV optional					
Photometric Data						
Efficacy(lm/W) (CRI 70Ra, 5000K) (Std Dev ±5%)	15D	138.4 lm/W	139.1 lm/W	139.7 lm/W	135.3 lm/W	135.3 lm/W
	30D	166.6 lm/W	157.1 lm/W	162.0 lm/W	160.0 lm/W	152.9 lm/W
	60D	167.9 lm/W	156.8 lm/W	167.6 lm/W	163.1 lm/W	156.3 lm/W
	120D	—	—	169.8 lm/W	165.5 lm/W	168.4 lm/W
Luminous Flux (lm) (Std Dev ±5%)	15D	43261 lm	52098 lm	63821 lm	78187 lm	96089 lm
	30D	52566 lm	58621 lm	73677 lm	92329 lm	109447 lm
	60D	52929 lm	58622 lm	77315 lm	93205 lm	112023 lm
	120D	—	—	78108 lm	95990 lm	120878 lm
ULOR	= 0%, @ Luminaire inclination 0°					
CCT	3000K, 4000K, 5000K, 5700K, 6500K					
CRI	Ra70, Ra80, Ra90 optional					
Beam Angle	15D/30D/60D/120D					
LED Manufacturer	LUMILEDS/Seoul					
LED Model	Lumileds 5050 / Seoul 3535					
Working Current of Single LED (Standard product)	15D	75mA	90mA	66mA	85mA	105mA
	30D	47mA	56mA	39mA	50mA	63mA
	60D	47mA	56mA	39mA	50mA	63mA
	120D	47mA	56mA	39mA	50mA	63mA
Lens	Polycarbonate, modular design					
Lifespan	L90B10 > 100000hrs, @Ta 25°C					
Mechanical Data						
IP/IK	IP66/IK10, according to standard EN 60529 and EN 62262					
Vibration Resistance	3G, conform to standard IEC 68-2-6.					
SCx(EPA, Fixture body)	Front: 0.204386㎡(2.2ft²) Side: 0.115943㎡(1.248ft²)			Front: 0.285212㎡(3.07ft²) Side: 0.132665㎡(1.428ft²)		
Housing/Materials	Heavy-duty die-cast aluminum (EN AC-46100)					
Surface Treatment	Anti-UV thermosetting polyester/80 micron epoxy primer, Anti-UV thermosetting polyester (for extremely corrosive environments).					
Painting	Black, Silver gray, Customized color					
Cable	Pre-wired with a 30 cm cable (Other lengths on request)					
Mounting	TYPE A/TYPE B/TYPE C/TYPE D					
Others						
Warranty	5 years in standard, 10 years optional					
Certification	UL/cUL/SAA/CE/FCC/ENEC/TUV,For other certificates please request					
Product Size	TYPE-A	φ468*343mm / φ18.4*13.5 inches		φ550*336mm / φ21.7*13.2 inches		
	TYPE-B	φ468*559*407mm / φ18.4*22.0*16.0 inches		φ550*602*315mm / φ21.7*23.7*12.4 inches		
Net Weight	TYPE-A	10.3kg / 22.71 lbs	10.3kg / 22.71 lbs	16.08kg / 35.45 lbs	16.08kg / 35.45 lbs	16.08kg / 35.45 lbs
	TYPE-B	16.5kg / 36.38 lbs	16.5kg / 36.38 lbs	23.2kg / 51.15 lbs	23.2kg / 51.15 lbs	23.2kg / 51.15 lbs
TYPE-A	540*540*415mm / 21.3*21.3*16.3 inches			640*640*435mm / 25.2*25.2*17.1 inches		
TYPE-B	550*555*410mm / 21.7*21.9*16.1 inches			640*640*435mm / 25.2*25.2*17.1 inches		
TYPE-A	13.27kg / 29.26 lbs		13.27kg / 29.26 lbs	19.68kg / 43.39 lbs	19.68kg / 43.39 lbs	19.68kg / 43.39 lbs
TYPE-B	19.5kg / 43.0 lbs		19.5kg / 43.0 lbs	26.8kg / 59.08 lbs	26.8kg / 59.08 lbs	26.8kg / 59.08 lbs
Application Field	Suitable for stadium, sports field, port, railway station					
Important Note!	The provided information is solely for reference; the official measurement report holds higher authority.					

* Note-1: For the power supply in the United States and Canada, in case the input voltage fluctuation ≥240V the High Voltage solution is highly recommended for performance stability. Improper selection will cause damage to the driver or the light.

Construction

- Heavy duty die cast aluminum housing.
- Light engine is thermally isolated from the driver compartment.
- UV Stabilized polyester powder paint finish rated for 1000 hour salt spray.
- Easy maintenance access to electrical components.
- Rugged, weather-tight design and 3G Vibration ratings ensure durability even in harsh environments.

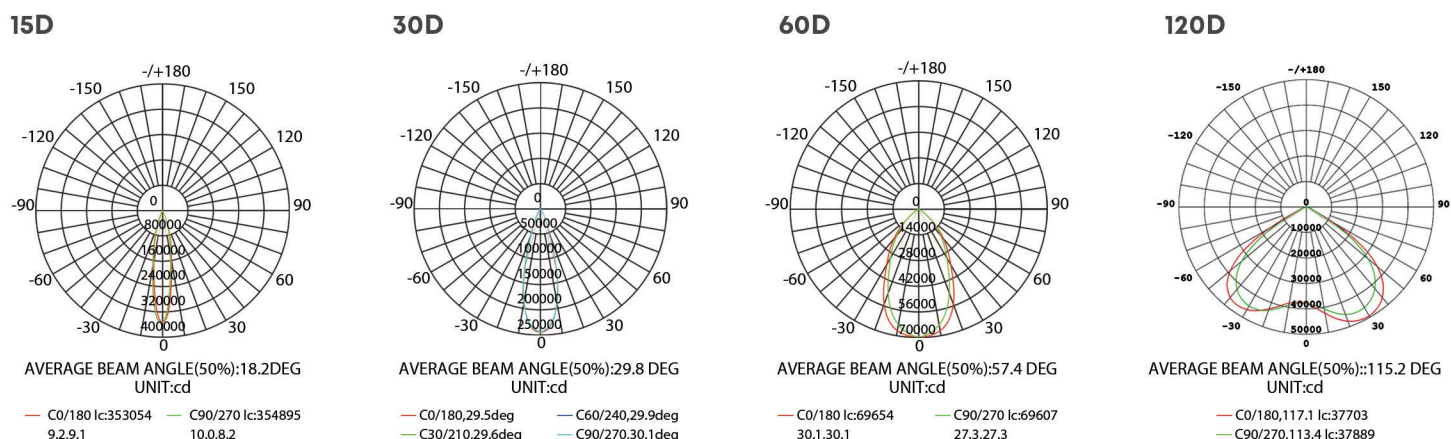
Optics

- Four available light distributions: 15°, 30°, 60°, 120°.
- High impact UV stabilized polycarbonate outer lens protects LEDs and allows for cleaning and debris removal.

Ordering Information

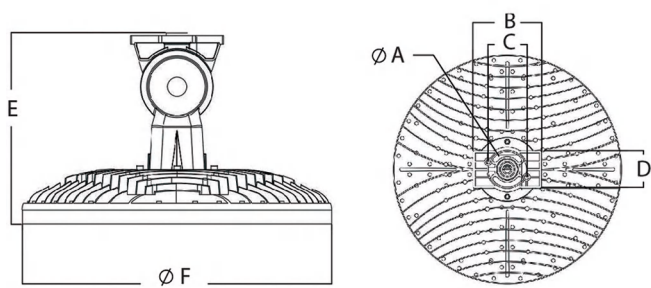
AOK							
WATTS	VOLTAGE	LED CHIPS	TYPE OF SENSOR	CCT&CRI	DISTRIBUTION	MOUNT	HOUSING
315W iNS	NV=100-277V	L5=Lumileds 5050	00=Without Sensor	3070=3000K 70CRI	15D=15°	A=Top Fixed	BK=Black
380W iNS	HV=277-480V	S3=Seoul 3535	DV=Dimmable	3080=3000K 80CRI	30D=30°	B=With driver box	SG=Silver Grey
460W iNS			PH=Photocell	4070=4000K 70CRI	60D=60°	C=Split mode	
580W iNS				4080=4000K 80CRI	120D=120°	D=Yoke Mount	
720W iNS				5070=5000K 70CRI			
				5080=5000K 80CRI			
				5770=5700K 70CRI			
				5780=5700K 80CRI			
						Accessories	
						SPD 10kV, 20kV optional	
						Light visor	
						Laser aiming	

Photometrics



Dimensions

INS-A



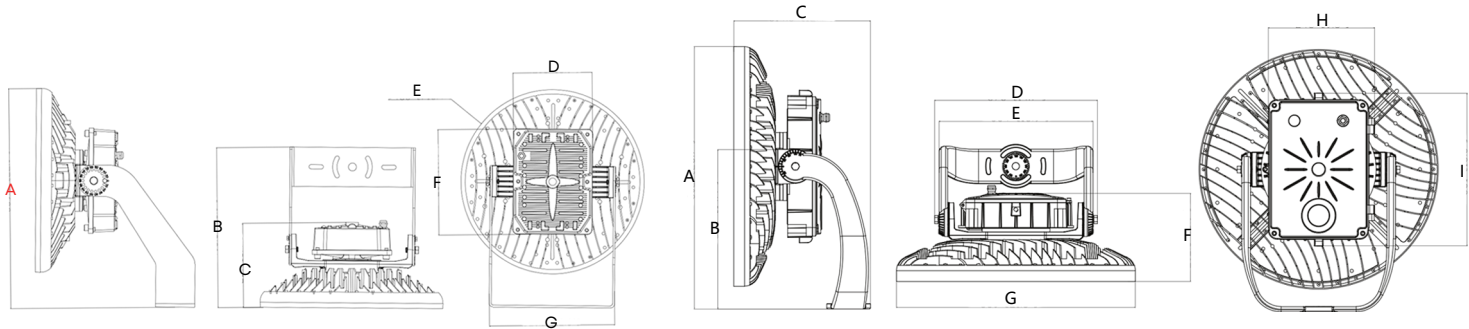
315W-380W

A	B	C
7.3cm(2.9")	16.5cm(6.5")	9.3cm(3.6")
D	E	F
9.0cm(3.5")	34.3cm(13.4")	46.8cm(18.3")

460W-720W

A	B	C
7.3cm(2.9")	7.3cm(2.9")	9.3cm(3.6")
D	E	F
9.0cm(3.5")	33.6cm(13.2")	55.0cm(21.6")

INS-B



315W-380W

A	B	C	D
55.96cm(22.0")	40.68cm(16.0")	21.4cm(8.4")	20.3cm(8")
E	F	G	
46.8cm(18.4")	26.8cm(10.5")	32.01cm(12.6")	

460W-720W

A	B	C	D	E
60.2cm(23.7")	36.6cm(14.4")	31.48cm(12.4")	37.5cm(14.7")	35.4cm(13.9")
F	G	H	I	
20.25cm(8.0")	55.0cm(16")	24.5cm(9.6")	35.1cm(13.8")	

Accessories

Bracket Options



INS-A
Top Fixed Installation



INS-B
Under Yoke Mount (with driver box)



INS-C
Under Yoke Mount (split mode)



INS-D
Yoke Mount



Photocell



Steel rope



Laser aiming



Visor



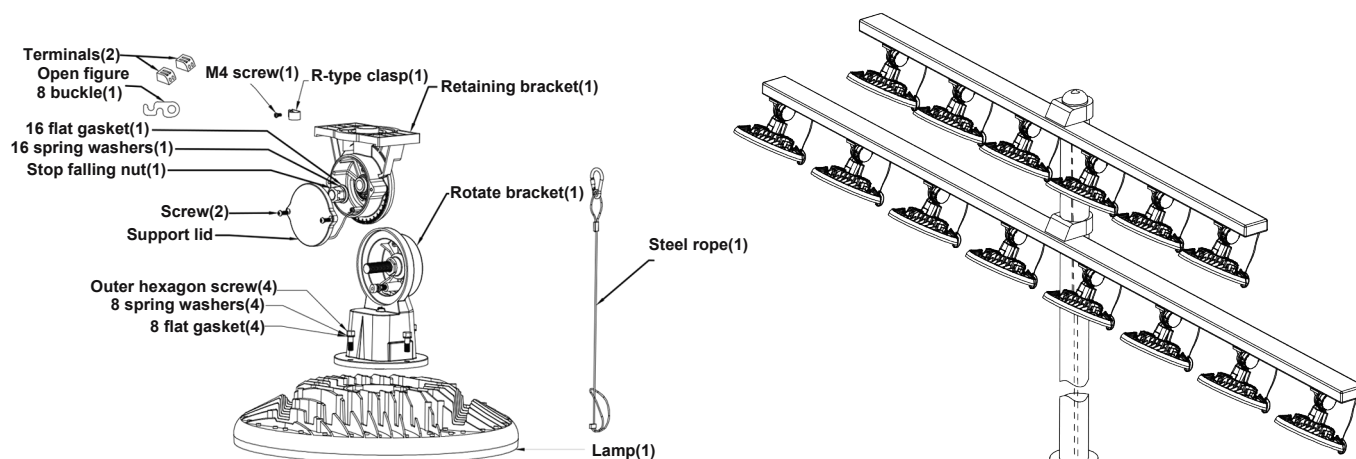
Timing control



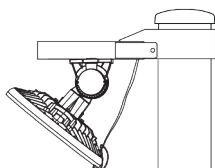
*As the products are upgraded, the accessories may differ from those described in the pictures. Please consult with our sales team for updated details and order separately.

Recommended Installation

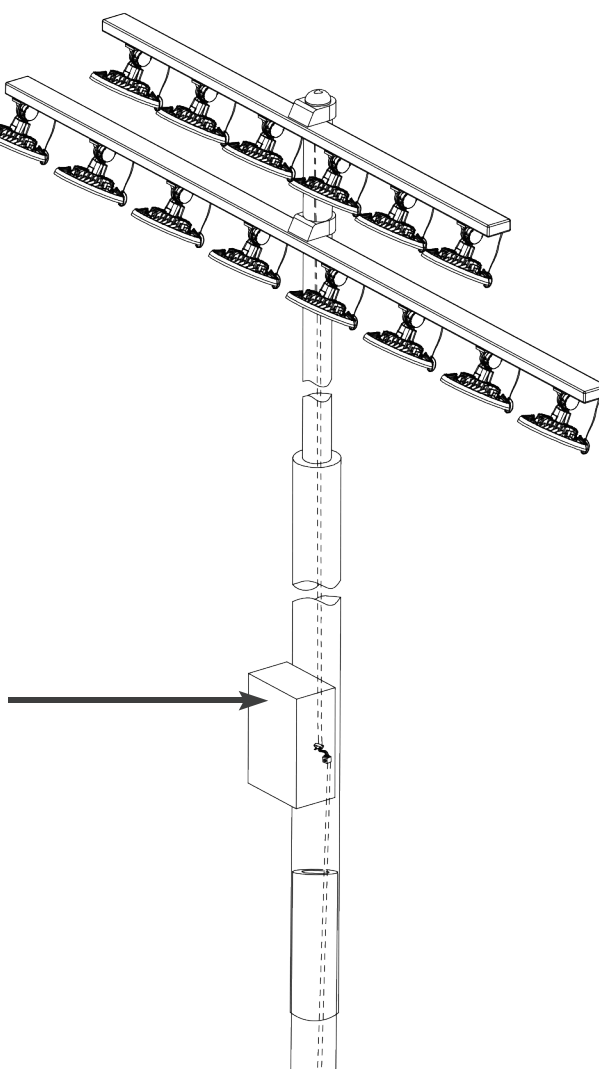
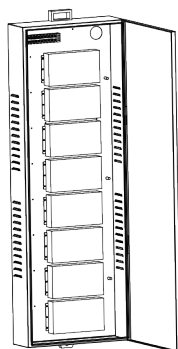
INS-A



Installed schematic diagram:

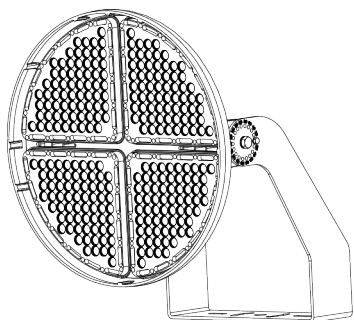


Schematic diagram of power chamber:

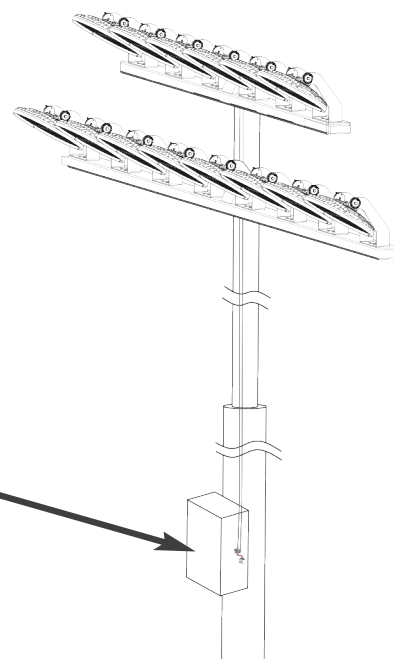
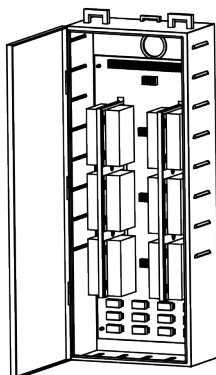


INS-C

Installed schematic diagram:



Schematic diagram of power chamber:





Innovative & Tailored Lighting Solutions for **Success**



wally@aokledlight.com
www.aokledlight.com
+1 626-986-4050 (US)
+86 755 2357 9148 (CN)

Manufacturing:
Shenzhen: Building 1 & 4, St. George's Science and Technology Industrial Park, Shajing Street, Shenzhen, China, 518124.
Huizhou: Building 2, Yinghui Electronic Science and Tech Park, No. 6 Dongsheng North Rd, Chenjiang Street, Zhongkai High-tech Zone, Huizhou, China. 516006.
Fuzhou HQ: Room 301, Yujing Business Center Zone 1, No. 12 Baihuazhou road, Cangshan district, Fuzhou, China, 350007

Copyright ©2024 AOK LED LIGHT CO., LTD. All Right Reserved.