



BM PRO Series

Indoor High Definition LED Screen

BM-PRO series cabinet is a new design with thinner and lighter for indoor application. With premium quality & business style, multi cabinet size for flexible splicing, wall mounted, hanging, free standing with wheels, it's the good choice for conference room, airport, retail store, auditorium, theater, religion house, hospitality, shopping mall, gaming room, etc.

Brochure

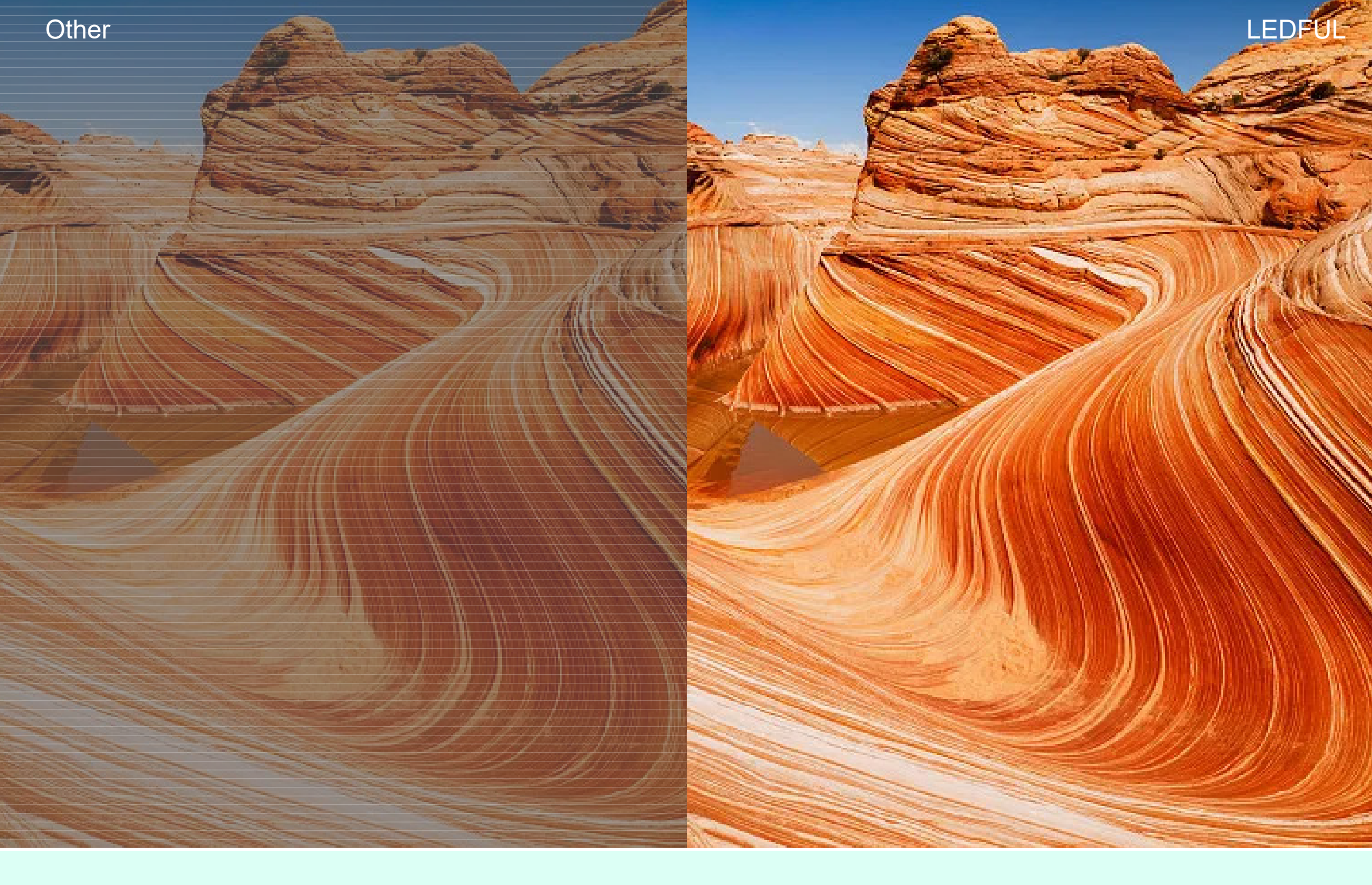
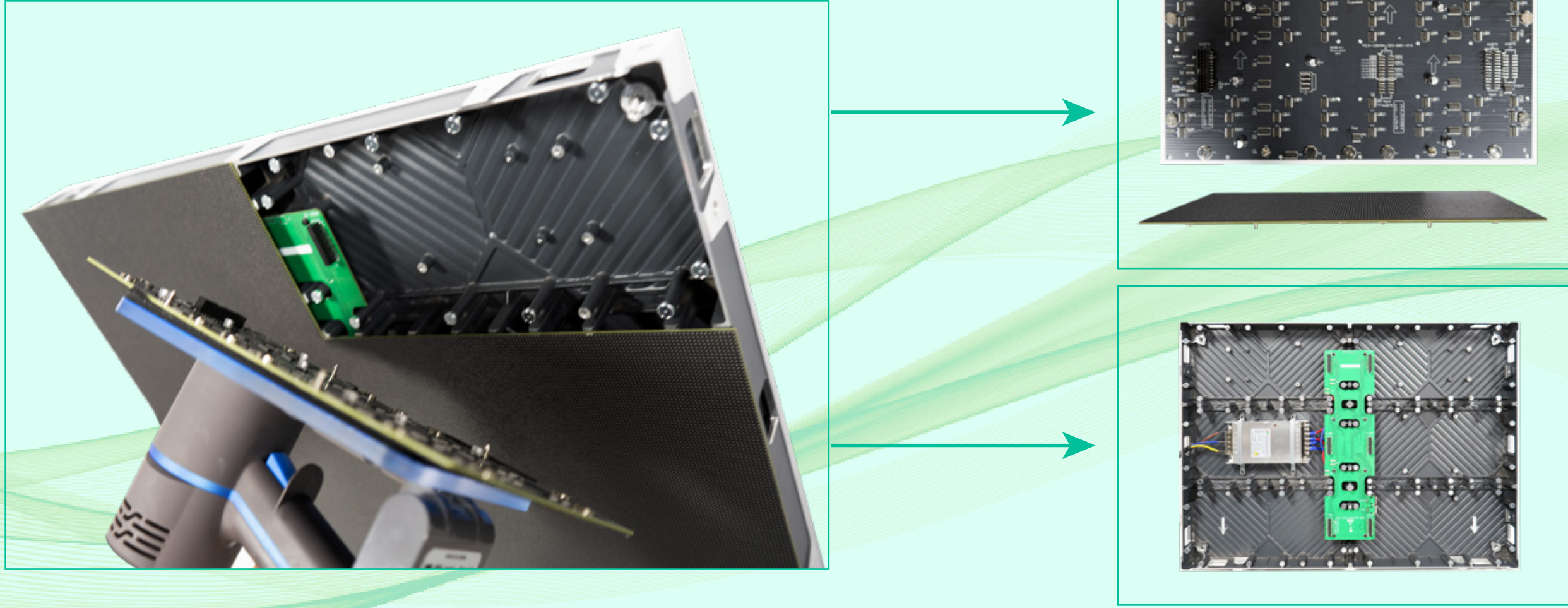
Product Video

Installation Video

Contact

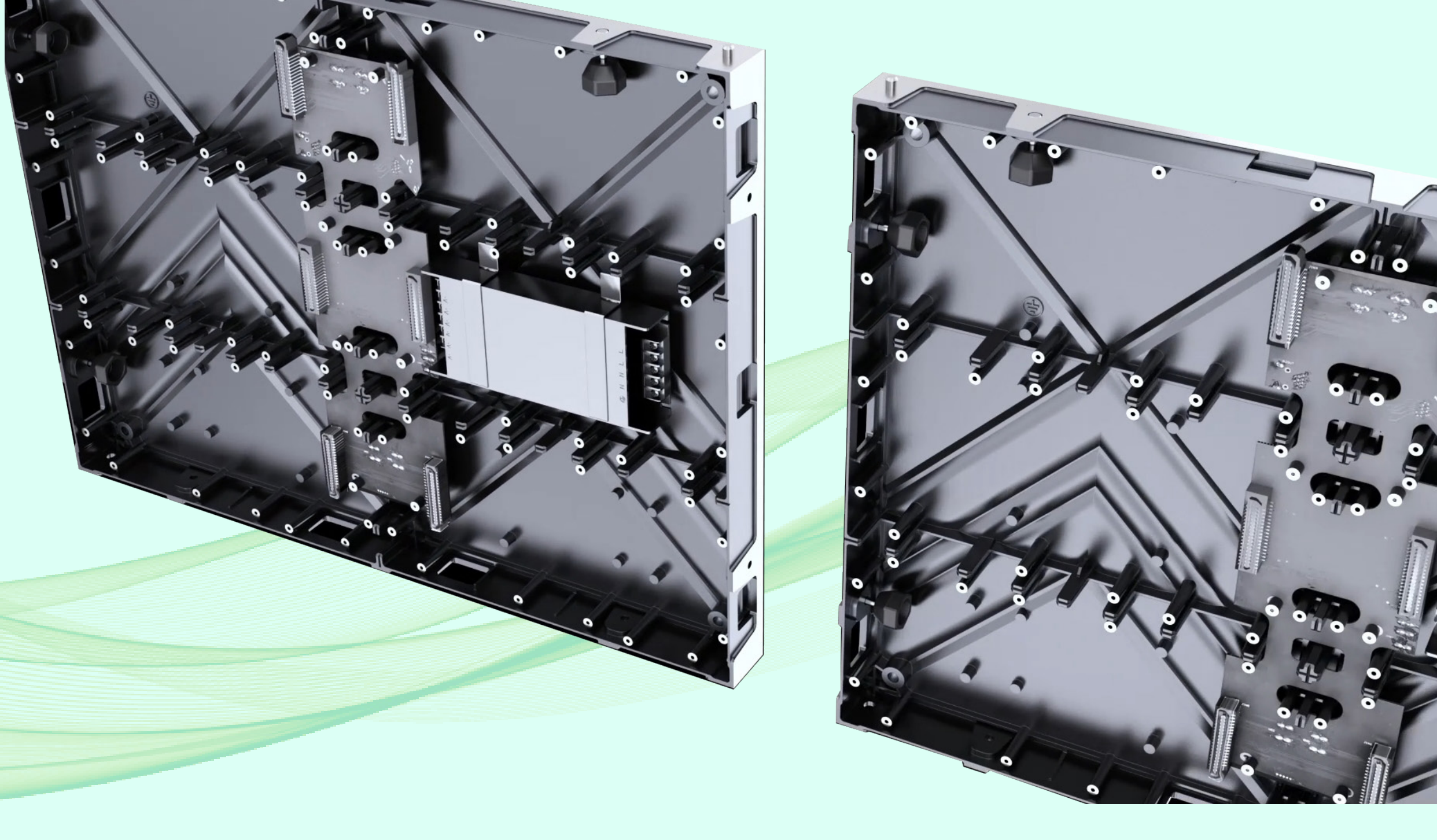
Cable Free

Faster, save labors, save time, save cost during LED screen installation and maintenance, Simple, easy, convenient, user friendly.



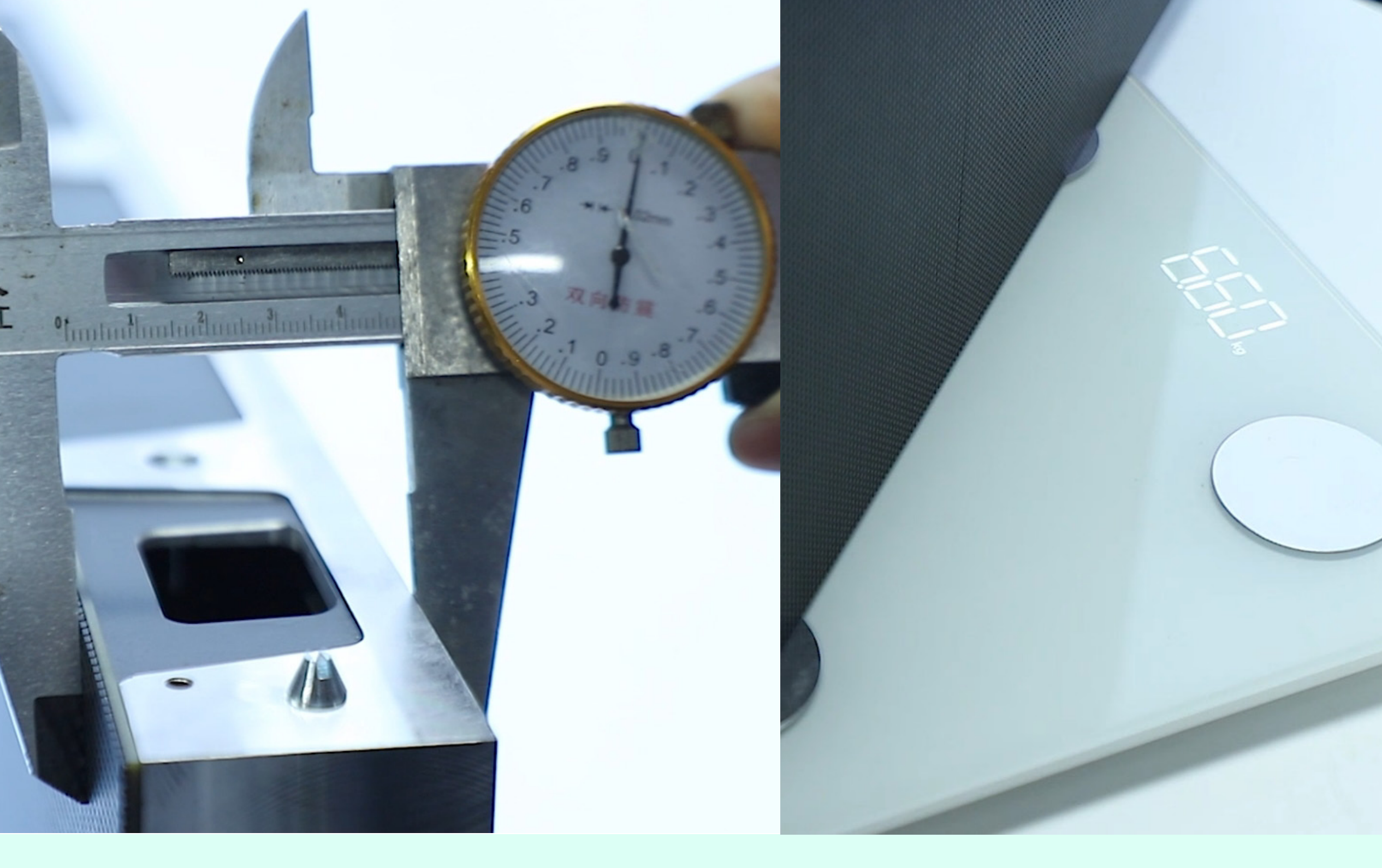
Superior Visual Effect

160°super wide viewing angle
3840Hz high refresh
10000:1 contrast ratio
16bit greyscale



Die Casting Aluminum Cabinet

High strength, better flatness with tolerance less than $\pm 0.2\text{mm}$, makes LED screen real seamless and perfect flatness.

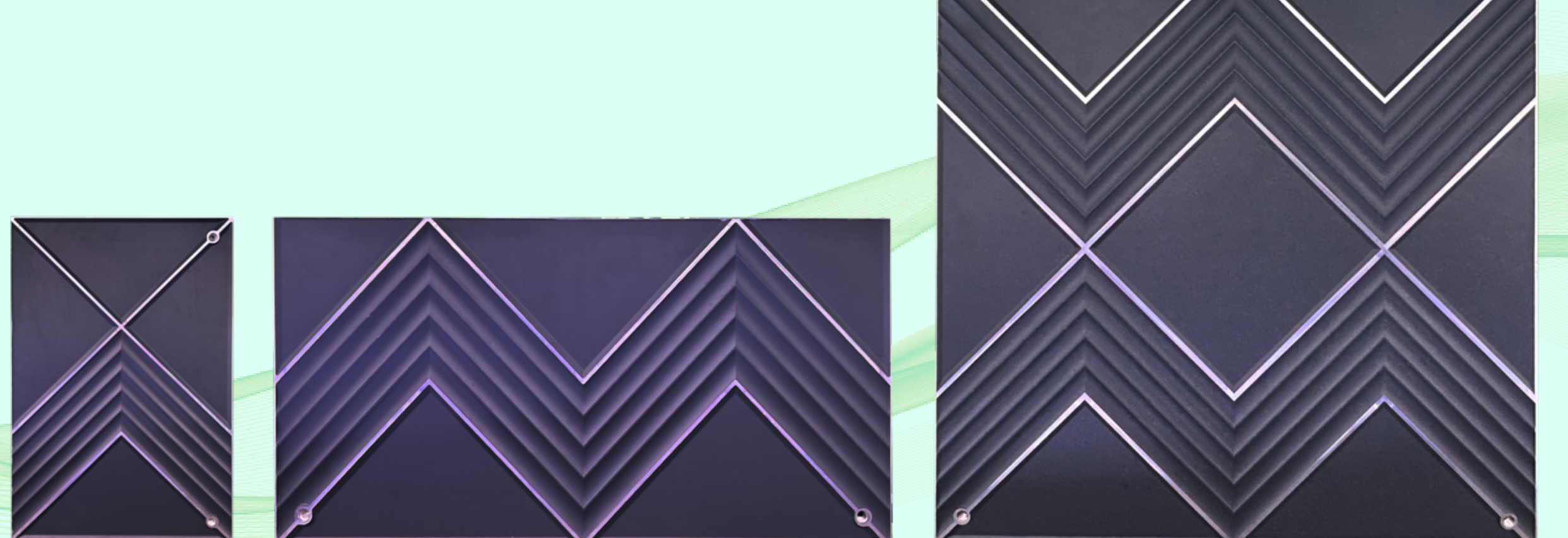


Thin and Light

48mm depth & 6.6kg for 640x480mm panel.

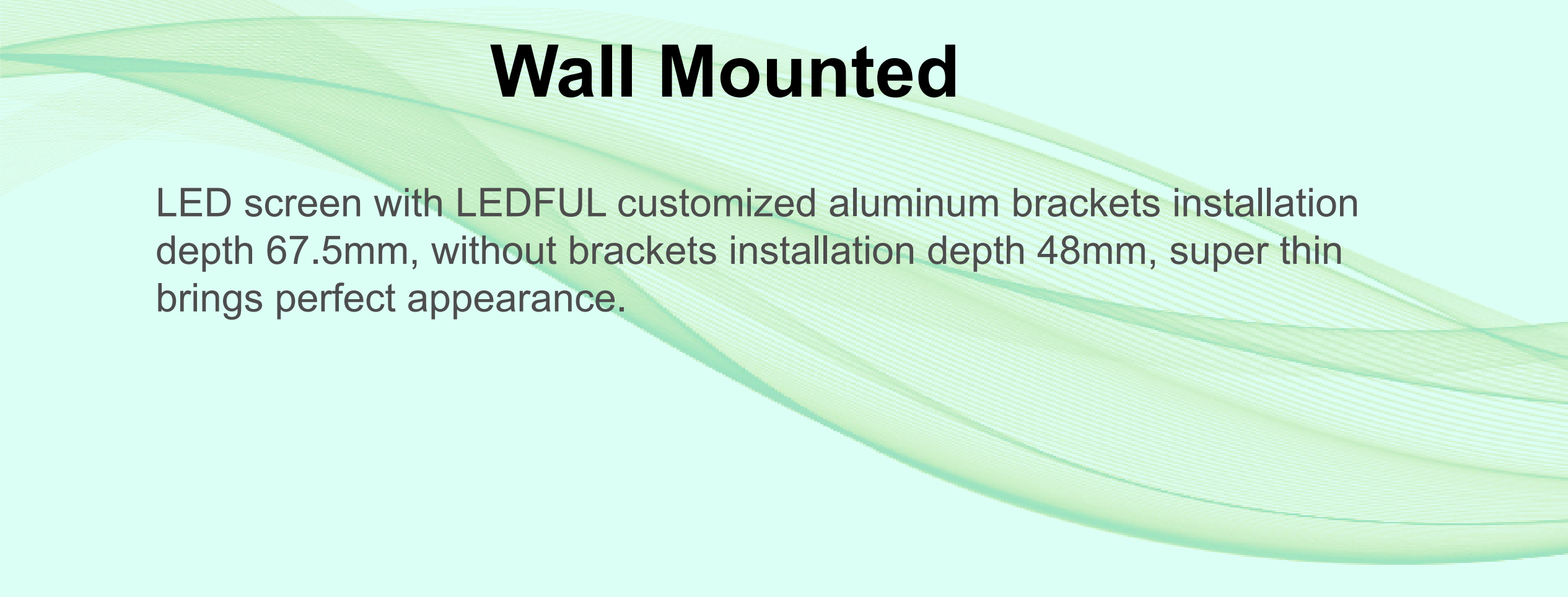
Flexible Splicing

Multi-Size Options 640x480mm, 640x640mm, 320x160mm, 320x480mm, 320x320mm, 640x320mm, 640x160mm. Vertical and horizontal cabinet installation with different cabinet size to match any LED screen size requests.



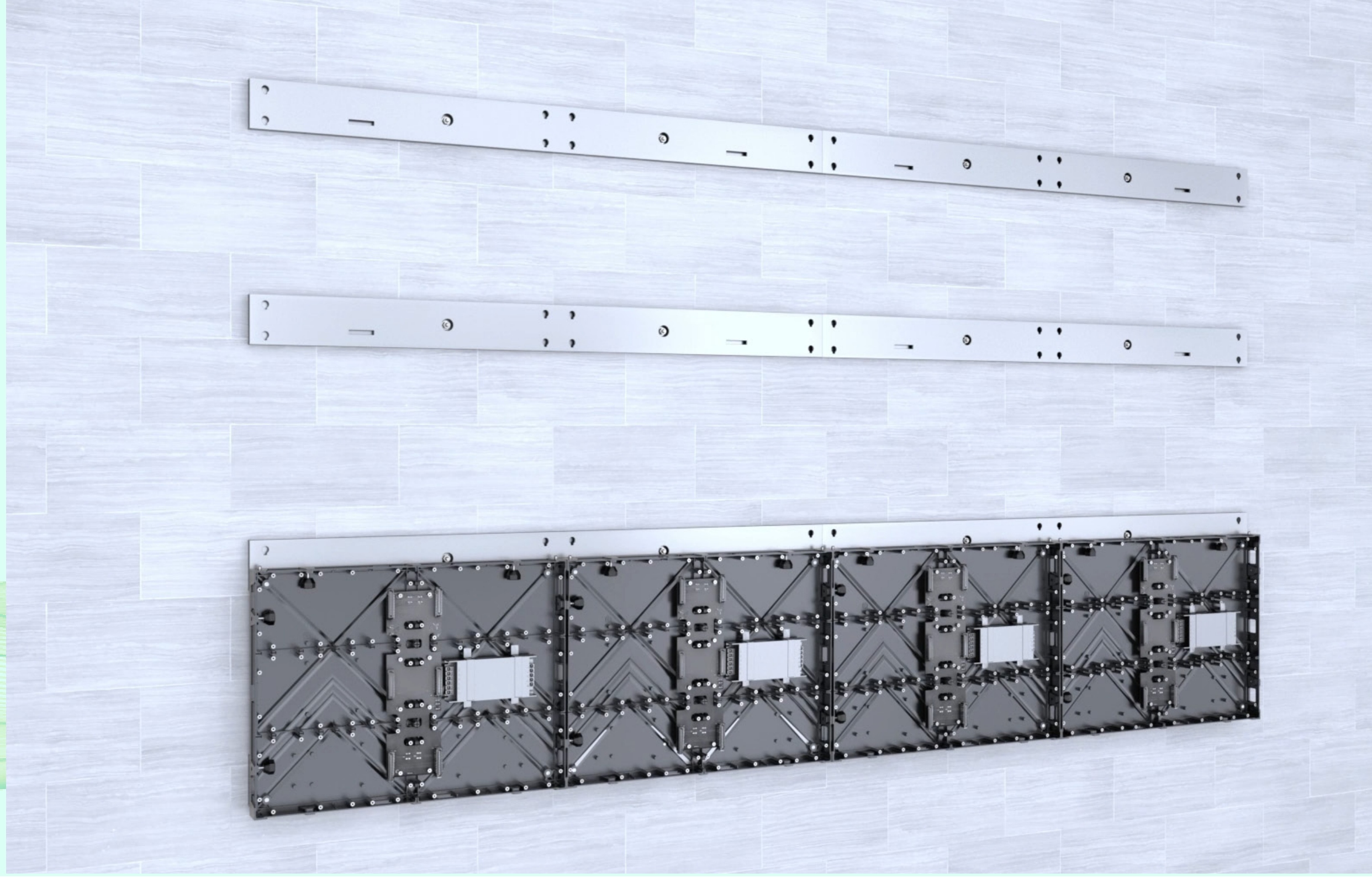
High Brightness Solution

High brightness solution born for window application: P1.8 with 3500nits & P2.5 with 4000nits brightness.



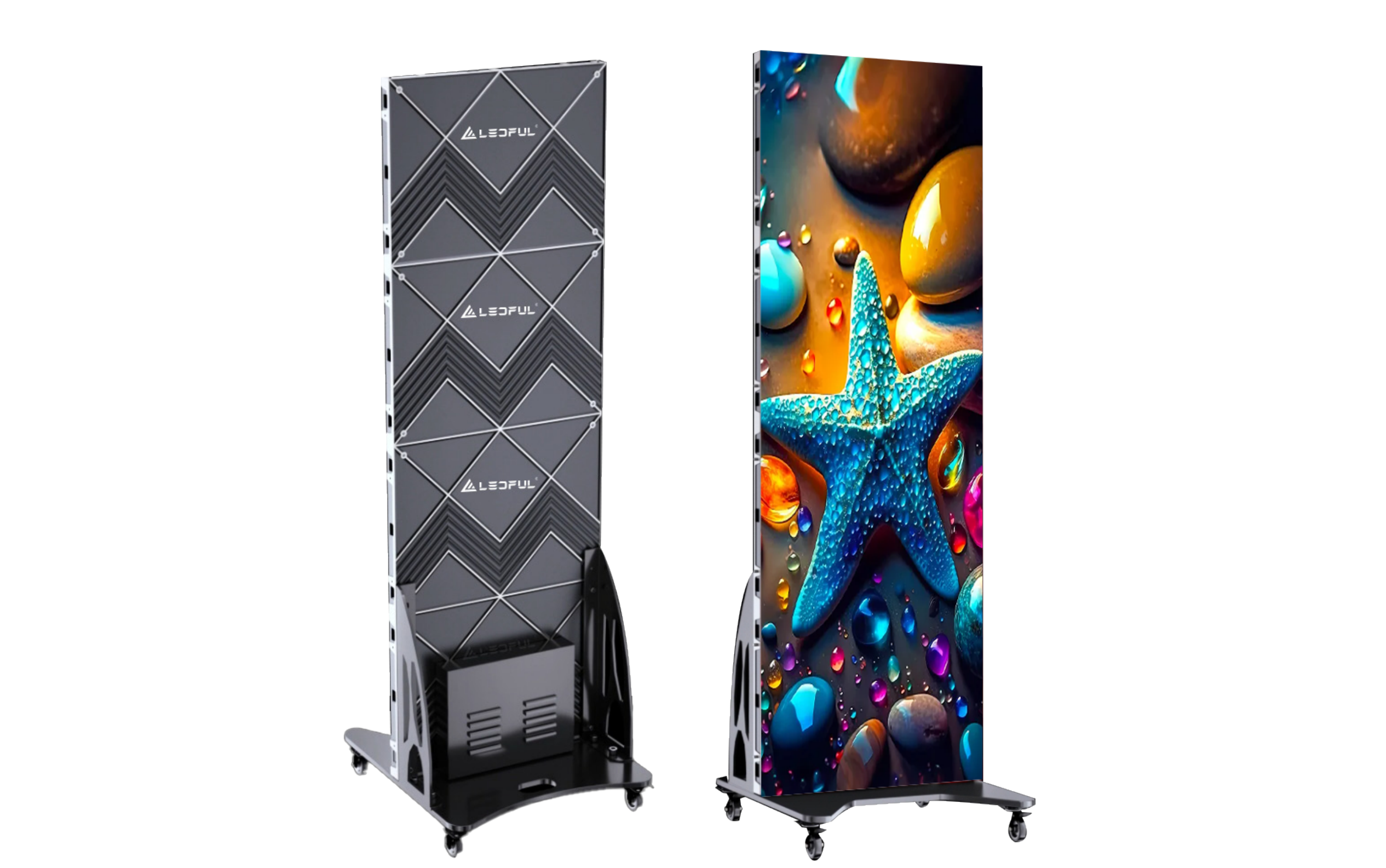
Wall Mounted

LED screen with LEDFUL customized aluminum brackets installation depth 67.5mm, without brackets installation depth 48mm, super thin brings perfect appearance.



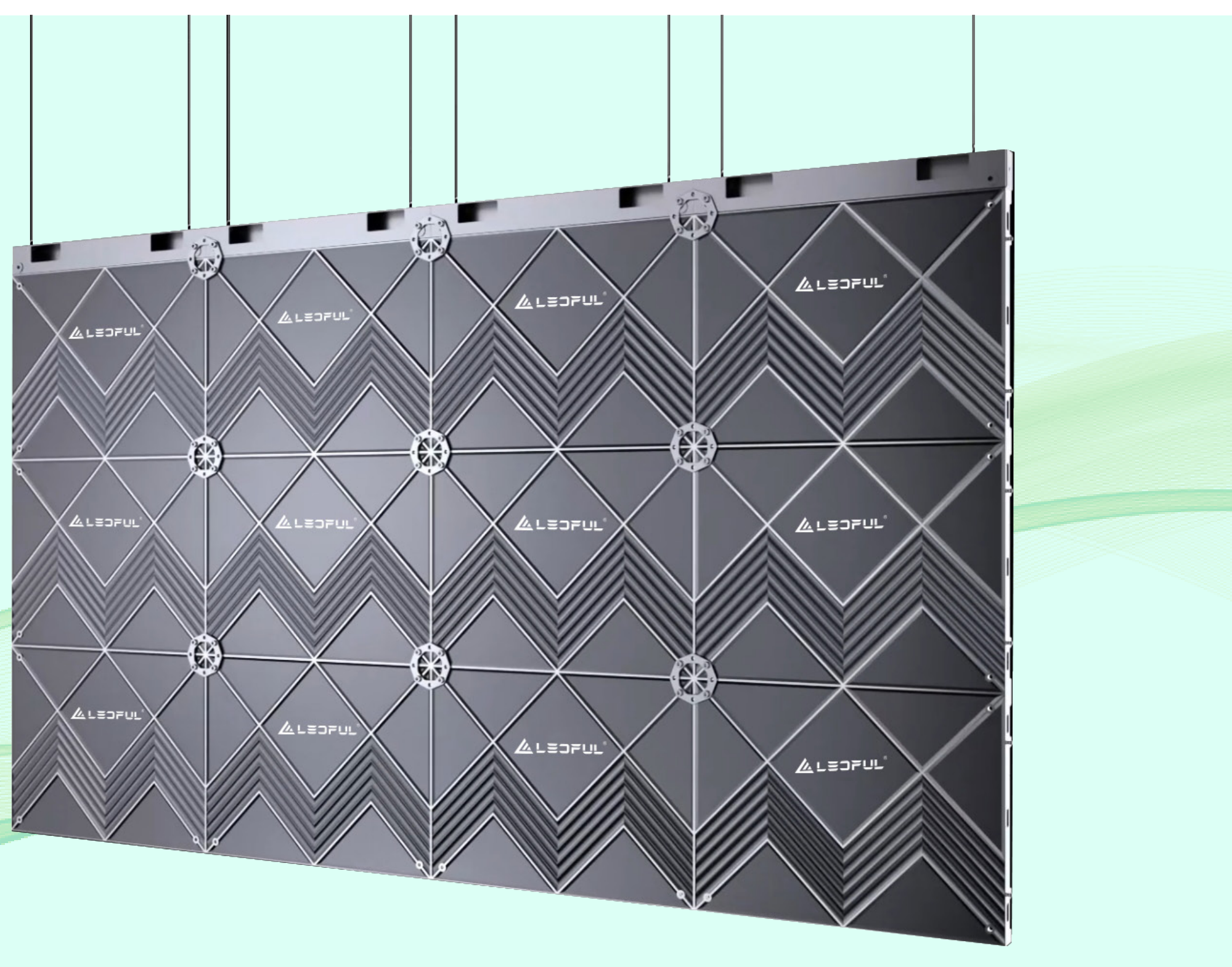
Free Standing BM-PRO Poster

BM-PRO Poster 640x1920mm plug and play, free standing, movable, seamless cascade,



Hanging

Super light only 6.6kg/640x480mm panel for hanging installation with safety concern.



Front Maintenance

Anyone can replace the modules with a special suction tool. Easy, quick, convenient, only 1 second with our cable-free design.

Parameters

Model	BM1.2-PRO	BM1.5-PRO	BM1.8-PRO	BM2.5-PRO	BM1.8HI-PRO	BM2.5HI-PRO
Pixel Pitch(mm)	1.25	1.53	1.86	2.5	1.86	2.5
Pixel Matrix Per Sq.m	640,000	422,500	288,888	160,000	288,888	160,000
Pixel Configuration	SMD1010	SMD1212	SMD1515	SMD2020	SMD1515	SMD2020
Brightness (nits)	≤ 1000	≤ 1000	≤ 1000	≤ 1000	3500	4000
Scan	1/64	1/52	1/43	1/32	1/43	1/32
Module Dimension	320x160mm	320x160mm	320x160mm	320x160mm	320x160mm	320x160mm
Cabinet Dimension		640×480×48mm, 640×640×48mm, 320×480×48mm, 640×320×48mm, 640x160mmx48mm				
Cabinet Material	Die Casting Aluminum	Die Casting Aluminum	Die Casting Aluminum	Die Casting Aluminum	Die Casting Aluminum	Die Casting Aluminum
Cabinet Weight	21KG/sqm	21KG/sqm	21KG/sqm	21KG/sqm	21KG/sqm	21KG/sqm
Power Con. (W/sqm.)	"Max. 650W/Avg.100~200W"	"Max. 650W/Avg.100~200W"	"Max. 650W/Avg.100~200W"	"Max. 650W/Avg.100~200W"	"Max. 976W/Avg.200~300W"	"Max. 976W/Avg.200~300W"
Service Access	Full Front Access	Full Front Access	Full Front Access	Full Front Access	Full Front Access	Full Front Access
Refresh Rate (HZ)	≥ 3840	≥ 3840	≥ 3840	≥ 3840	≥ 3840	≥ 3840
Grey Scale (bit)	16	16	16	16	16	16
Contrast Ratio	10000 : 1	10000 : 1	10000 : 1	10000 : 1	10000 : 1	10000 : 1
Viewing Angle (H / V)	160° / 160°	160° / 160°	160° / 160°	160° / 160°	160° / 160°	160° / 160°
IP Rate	IP43	IP43	IP43	IP43	IP43	IP43
Operation Temperature	-20℃ ~ +60℃	-20℃ ~ +60℃	-20℃ ~ +60℃	-20℃ ~ +60℃	-20℃ ~ +60℃	-20℃ ~ +60℃
Operation Humidity	10% ~ 90%	10% ~ 90%	10% ~ 90%	10% ~ 90%	10% ~ 90%	10% ~ 90%
Input Voltage (AC)	AC 110/220V, 50-60Hz	AC 110/220V, 50-60Hz	AC 110/220V, 50-60Hz	AC 110/220V, 50-60Hz	AC 110/220V, 50-60Hz	AC 110/220V, 50-60Hz

* Specifications and photos are subject to change without prior notice.