



LIONLED



深圳市狮子光电科技有限公司

Shenzhen Lion Optoelectronics Technology Co.,Ltd.

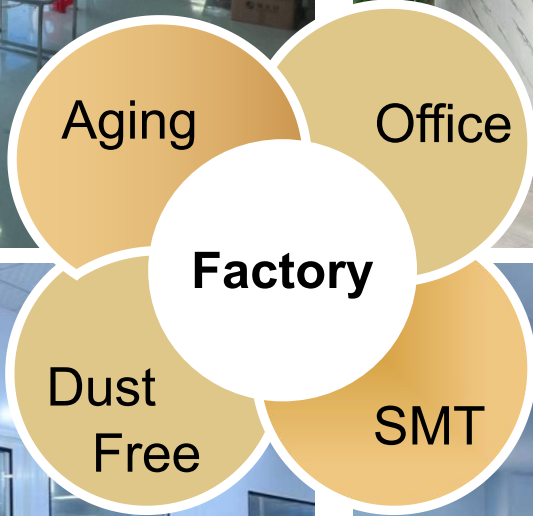
Company Profile



Founded in 2012, Shenzhen Lion Optoelectronics Co., Ltd. (LIONLED) is a high-tech LED display enterprise integrating R&D, production and sales. With an investment of 30 million RMB, it covers an area of more than 16000 square meters, has an independent purification plant, a research and development base, and the most advanced production and testing equipment in the industry.

Lionled focuses on establishing long-term, reliable and win-win relationships with customers and partners. We have strong R&D capabilities, timely market response, market-oriented creative products, dedicated employees and great customer service.

We takes meeting customer needs as its core, with highlight high-tech as its support, has established a complete product ecosystem: indoor COB commercial displays, strip shelf displays, outdoor common shade, rental and fixed installation full-color screens, transparent LED display, and outdoor mesh LED display.



FT Series



Product Feature

New cooling technology greatly increases service life and reduces failure frequency.

Simple front-end installation and front-end maintenance.

The aluminum profile panel supports the wall-mounted frame for easy installation.

Adjustable panel size based on US unit 1ft x 1ft modules.

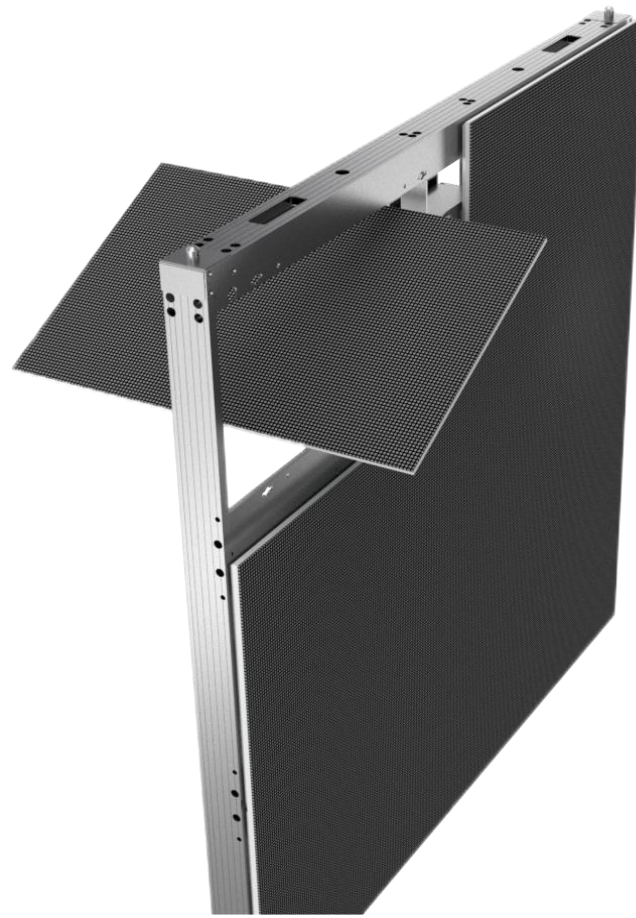
It can be used in the US digital signage market, enabling advertisements with vivid graphics with a wide field of view.



Pixel Pitch (mm)	4.76	6.35	9.5
LED Type	SMD1921	SMD2727	
Pixel Density (pixels/m ²)	44010	24800	11022
Brightness (cd/m ²)	7000-10000		
Scan	1/8	1/6	1/2
Refresh Rate (Hz)	1920-3840		
Cabinet Dimension (W* H)(mm)	Aluminum Extrusion Cabinet		
Cabinet Size (mm)	2ft x 4ft / Custom Made		
Module Size (mm)	1ft x1ft (304.8x304.8)		
Weight (KG/cabinet)	24		
Maintenance Method	Front/ Back		
Horizontal/Vertical Viewing Angle	≥140°/≥120°		
Gray Scale	14		
Protection Level	Ip68		
Colour Temp	6000~ 12000K		
Input Signal	HDMI , DVI/VGA. RGBHV Composite ,S- VIDEO ,YPbPr(HDTV) etc ...		
Max Power Consumption (W/ m ²)	500		
Avg. Power Consumption (W/m ²)	150		

F

Series



Product Feature

Ultra thin panel saves mounting space. Simple front/back installation and maintenance. Supports arc installation, aluminum profile panel, supports wall-mounted frame for easy installation.

Adjustable panel size based on module of 480x320mm.

Reducing the cost of steel structures by nearly 25%.

Vivid picture with a wide field of view for advertising.



Outdoor Advertising Screen

Pixel Pitch (mm)	4.44	5.7	6.66	10
LED Type	SMD			
Pixel Density (pixels/m ²)	50635	30625	22500	10000
Brightness (cd/m ²)	6500-10000			
Scan	1/9	1/7	1/6	1/2
Refresh Rate (Hz)	3840			
Cabinet Resolution (W*H)	216*216	168*168	144*144	96*96
Cabinet Size (mm)	Die casting aluminum cabinet 960*960*77(Support Customization)			
Module Size (mm)	480*320			
Weight (KG/cabinet)	25			
Maintenance Method	Front/Back			
Horizontal / Vertical Viewing Angle	≥140°/≥140°			
Gray Scale	14			
Protection Level	Ip65			
Colour Temp	6000~ 12000K			
Input Signal	HDMI , DVI/VGA. RGBHV Composite ,S- VIDEO ,YPbPr(HDTV) etc ...			
Max Power Consumption (W/m ²)	650			
Avg. Power Consumption (W/m ²)	220			

T

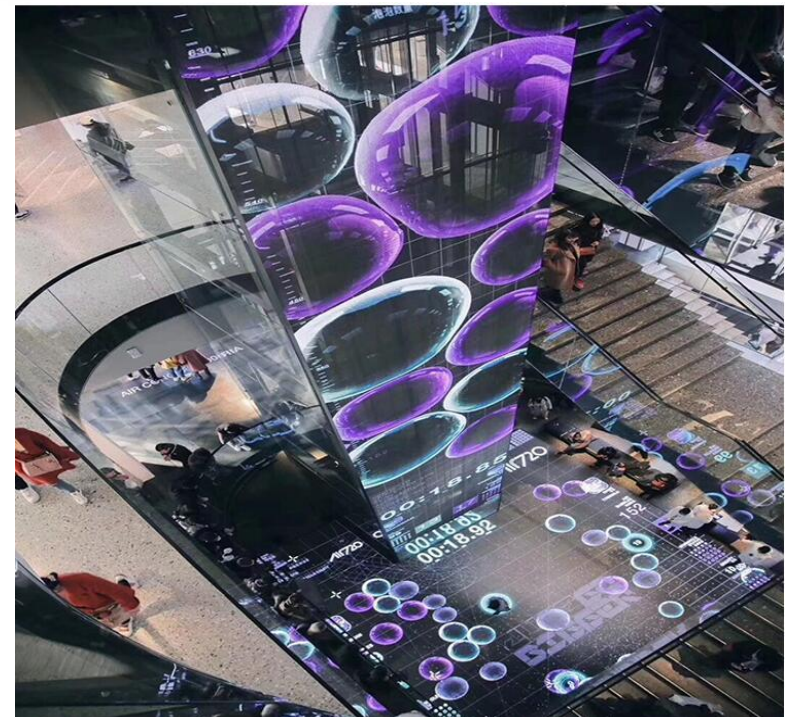
Series



Product Feature

It can ensure the color richness and display details of the dynamic picture, without affecting the lighting and aesthetics of the installation location.

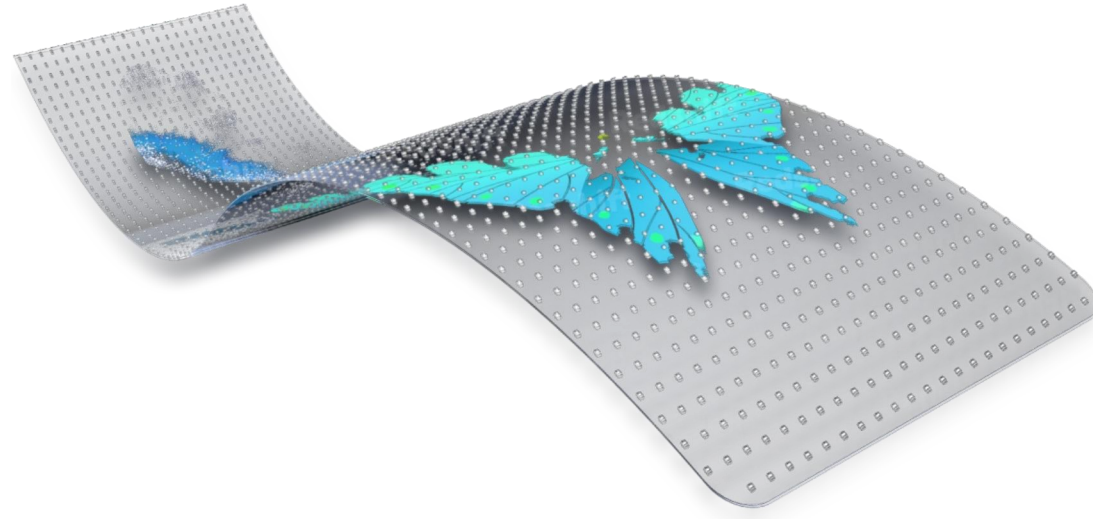
Clear and ture, bright colors and simple installation have made transparent LED display become the preferred product for glass windows.



Indoor Transparent Screen

Pixel Pitch (mm)	2.6-5.2	2.6-6.25	3.91-7.81
LED Type	SMD2020/SMD1921/SMD2727(based on led display brightness)		
Pixel Density (pixles/m ²)	73728	61440	32768
Brightness (cd/m ²)	1500-6000	1500-6000	800-8000
Scan	1/11	1/12	1/8
Refresh Rate (Hz)	1920/3840		
Cabinet Size (mm)	500 x1000 / 1000 x1000		
Module Size (mm)	500 x 125		
Maintenance Method	Front / Back		
Horizontal / Vertical Viewing Angle	≥140°/≥140°		
Gray Scale	14-17		
Colour Temp	3200~9300		
Contrast Ratio	100000:1		
Input Signal	HDMI , DVI/VGA. RGBHV Composite ,S- VIDEO ,YPb Pr(HDTV)etc ...		
Max Power Consumption (W/m ²)	550-800		
Avg. Power Consumption (W/m ²)	250-300		

T+ Series



Product Feature

High transparency, it's almost completely integrated into the glass.

Ultra-light and thin, with a thickness of 3mm, and a weight of 3.5kg/m^2 .

LED crystal film screen with strong flexibility, supports arbitrary cutting, not limited by size and shape.

Quick installation, can be directly pasted on the glass surface.

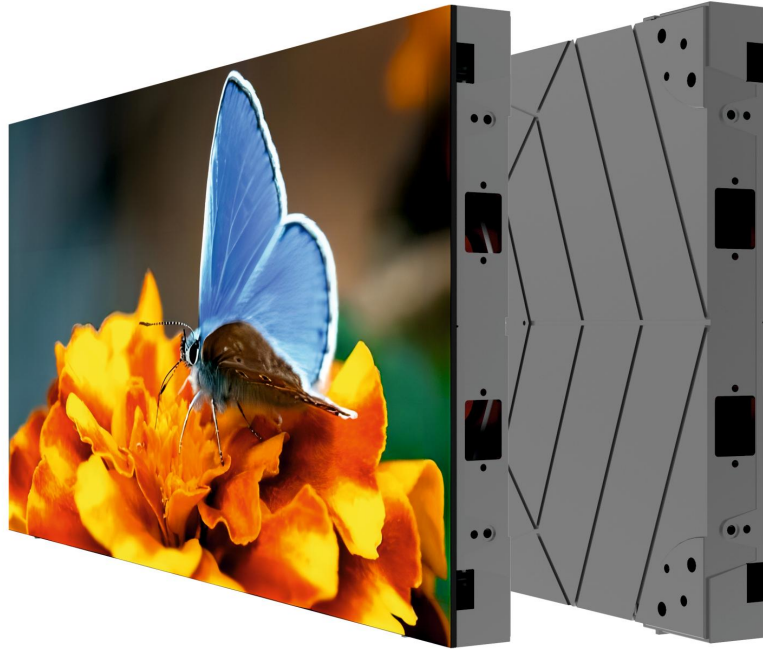


Flexible Transparent Screen

Pixel Pitch (mm)	4	6	8	10
LED Type	SMD1010	SMD2121	SMD2121	SMD2121
Pixel Density (pixels/m ²)	62500	27556	15625	10000
Brightness (cd/m ²)	3500	3500	4000	4000
Permeability	85%	85%	85%	90%
Refresh Rate (Hz)	≥3840			
Weight (KG/m ²)	3.5			
Cabinet Size (mm)	Customizable			
Module Size (mm)	800*240			
Horizontal / Vertical Viewing Angle	≥140°/≥140 °			
Gray Scale	16			
Protection Level	Ip30			
Colour Temp	3200~8500K			
Input Signal	HDMI , DVI/VGA. RGBHV Composite ,S- VIDEO ,YPb Pr(HDTV) etc ...			
Max Power Consumption (W/m ²)	600			
Avg. Power Consumption (W/m ²)	200			

C

Series



Product Feature

Full Flip Chip Technology, Moisture-proof / Anti-collision / Anti-static / Dust-free / Anti-oxidation / Anti-blue light, energy saving by nearly 30% .

With full black coating technology and calibration technology, the C Series has not only gained a non-reflective surface, but also produced vivid colors for true to nature images .



Indoor COB Screen

Pixel Pitch (mm)	0.9375	1.25	1.56	1.87
LED Type	Flip Chip COB Common--Cathode			
Pixel Density (pixles/m ²)	1,137,778	6,400,00	409,600	284,444
Brightness(cd/m ²)	500-1200			
Scan	1/60	1/45	1/48	1/30
Refresh Rate(Hz)	>3840			
Cabinet Resolution (W*H)	640*360	480*270	384*216	320* 180
Cabinet Size (mm)	Die casting aluminumcabinet 600x337.5x32.5			
Module Size (mm)	150* 168.75			
Weight (KG/cabinet)	7.5			
Maintenance Method	Front			
Horizontal/Vertical Viewing Angle	170°/170°			
Gray Scale	14~ 16			
Colour Temp	2500-10000			
Contrast Ratio	>1000000:1			
Input Signal	HDMI , DVI/VGA. RGBHV Composite ,S- VIDEO ,YPbPr(HDTV)etc . . .			
DotByDot Color Calibration	YES			
Module Power Supply Voltage DC	DC2.8V+3.8V			
Brightness Calibration	YES			
Max Power Consumption (W/m ²)	≤300			
Avg. Power Consumption (W/m ²)	≤100			

Q

Series



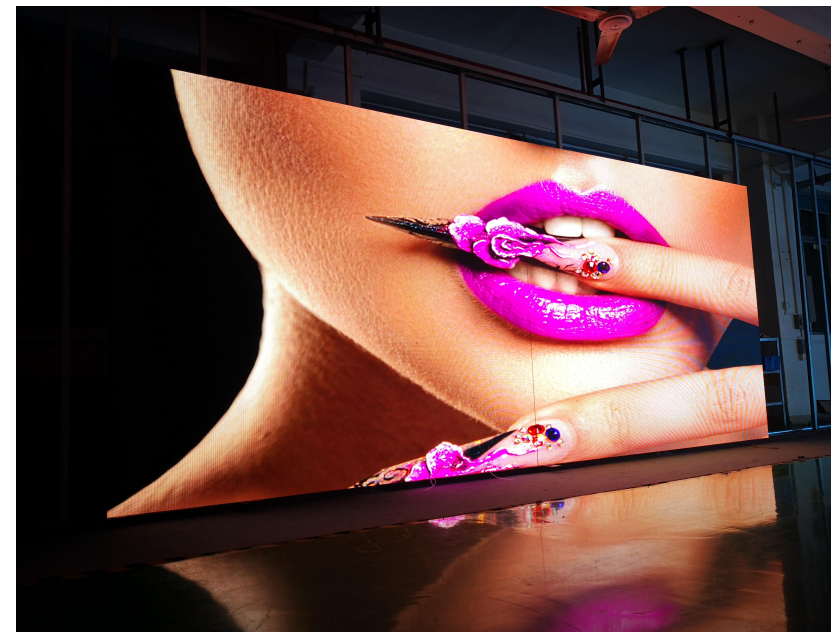
Product Feature

Light and slim die casting panel. Simple front installation and maintenance.

Support ultra-slim wall-mounting frame easy installation.

Support GOB technology, with super high protection performance.

With Precise-align technology, which makes the surface of product flat and clear.



Indoor Advertising Screen

Pixel Pitch (mm)	1.25	1.86	2	2.5
LED Type	SMD			
Pixel Density (pixels/m ²)	640000	288906	250000	160000
Brightness (cd/m ²)	500-900			
Scan	1/64	1/43	1/40	1/32
Refresh Rate (Hz)	≥3840		≥1920	
Cabinet Resolution (W* H)	512*384	344*258	320*240	256*192
Cabinet Size (mm)	Die casting aluminum cabinet 640*480*74			
Module Size (mm)	320*160			
Weight (KG/cabinet)	7			
Maintenance Method	Front			
Horizontal/Vertical Viewing Angle	≥170°/≥170°			
Gray Scale	13-16			
Colour Temp	2500-10000			
Contrast Ratio	>1000000:1			
Input Signal	HDMI , DVI/VGA. RGBHV Composite ,S- VIDEO ,YPbPr(HDTV) etc ...			
Max Power Consumption (W/m ²)	600	580	580	550
Avg. Power Consumption (W/m ²)	200	180	180	160

Q+ Series



Product Feature

- Support GOB and SMD technology.
- Free splicing of multiple cabinet size.
- Supporting right angle and rubik's cube splicing.
- Module without housing design and hard connection. High precision and high stability.



Indoor Meeting Room Screen

Pixel Pitch (mm)	1.25	1.56	1.95	2.6	2.97
LED Type	SMD/GOB				
Pixel Density (pixels/m ²)	640000	409600	262144	147456	112896
Brightness (cd/m ²)	500-900				
Scan	1/50	1/40	1/32	1/32	1/28
Refresh Rate (Hz)	≥3840				
Cabinet Resolution (W* H)	400*400	320*320	256*256	192*192	168*168
Cabinet Size (mm)	Die casting aluminum cabinet 500*500 / 1000*500 / 1000*250 / 500*250 / 250*500				
Module Size (mm)	250*250				
Weight (KG/cabinet)	7				
Maintenance Method	Front				
Horizontal / Vertical Viewing Angle	≥170°/≥170 °				
Gray Scale	13-17				
Colour Temp	2500-10000				
Contrast Ratio	>1000000:1				
Input Signal	HDMI , DVI/VGA. RGBHV Composite ,S- VIDEO ,YPb Pr(HDTV) etc ...				
Max Power Consumption (W/m ²)	600	580	580	550	550
Avg. Power Consumption (W/m ²)	200	180	180	160	160

R

Series



Product Feature

Quickly service power box. One man installation.

Support cabinet 90 degree splicing applications.

Support front and rear installation and back maintenance.

High brightness high contrast with perfect performance.

Rental & Stage Screen

Pixel Pitch (mm)	1.953	2.6	2.84	2.976	3.91
LED Type	SMD/GOB				
Pixel Density (pixles/m ²)	262144	147456	123904	112896	65536
Brightness (cd/m ²)	700-1000	700-1000	1000-5500	700-1000	1000-5500
Scan	1/32	1/32	1/22	1/21	1/16
Application	Indoor	Indoor	Indoor/Outdoor	Indoor	Indoor/Outdoor
Refresh Rate (Hz)	≥3840				
Module Resolution (W*H)	128*128	96*96	88*88	84*84	64*64
Cabinet Size (mm)	Die casting aluminum cabinet 500*500*89 / 500*1000*89				
Module Size (mm)	250*250				
Weight (KG/cabinet)	7/11			7.5/13.5	
Maintenance Method	Front/ Back				
Horizontal / Vertical Viewing Angle	≥170°/≥170 °				
Gray Scale	13-17				
Colour Temp	3200~ 12000				
Contrast Ratio	≥9500:1				
Input Signal	HDMI , DVI/VGA. RGBHV Composite ,S-VIDEO ,YPb Pr(HDTV)etc ...				
Max Power Consumption (W/m ²)	650	650	650	800	800
Avg. Power Consumption (W/m ²)	200	200	200	300	300

R+

Series



Product Feature

Quickly service power box.

One man installation.

Support cabinets 90 degree splicing applications.

Support front and rear installation and back maintenance.

High brightness high contrast with perfect performance.

Rental & Stage Screen

Pixel Pitch (mm)	1.9	2.604	3.91	2.604	3.91	4.81
LED Type	SMD					
Pixel Density (pixles/ m ²)	262144	147456	65536	147456	65536	43264
Brightness (cd/m ²)	700-1000			1000-5500		
Scan	1/32	1/32	1/16	1/16	1/16	1/13
Application	Indoor			Indoor/Outdoor		
Refresh Rate (Hz)	≥3840					
Cabinet Resolution (W*H)	192*192	168*168	128*128	168*168	128*128	104*104
Cabinet Size (mm)	Die casting aluminum cabinet 500*500*105 / 500*1000*105					
Module Size (mm)	250*250					
Weight (KG/cabinet)	8/12					
Maintenance Method	Front					
Horizontal / Vertical Viewing Angle	≥170°/≥170 °					
Gray Scale	14					
Colour Temp	3200~ 12000					
Contrast Ratio	≥9500:1					
Input Signal	HDMI , DVI/VGA. RGBHV Composite ,S-VIDEO ,YPb Pr(HDTV)etc ...					
Max Power Consumption (W/m ²)	650	650	650	800	800	800
Avg. Power Consumption (W/m ²)	200	200	200	300	300	300

Flex Series



Product Feature

Flexible LED screen can be designed for special-shaped occasions, such as cylinder, wave, bend and more creative solutions, more flexible. Wide application range for many occasions, especially in kinds of irregular buildings.

We can also make matched cabinet if needed.



Pixel Pitch (mm)	1.25	1.568	2	2.5
LED Type	SMD1010	SMD/GOB1212	SMD/GOB1515	SMD/GOB1515
Pixel Density (pixles/m ²)	640000	406406	250000	160000
Brightness (cd/m ²)	500-800			
Scan	1/64	1/51	1/40	1/32
Refresh Rate (Hz)	3840			
Weight (KG/cabinet)	21			
Cabinet Size (mm)	Customizable			
Module Size (mm)	320*160			
Horizontal / Vertical Viewing Angle	≥140°/≥140 °			
Gray Scale	16			
Protection Level	Ip40			
Colour Temp	3200~9300K			
Input Signal	HDMI , DVI/VGA. RGBHV Composite ,S- VIDEO ,YPb Pr(HDTV) etc ...			
Max Power Consumption (W/m ²)	600			
Avg. Power Consumption (W/m ²)	250			

P Series



Product Feature

LED poster screen supports remote control via the network, and can update and manage display content quickly and easily.

LED poster screen usually adopts slim design, and their simple design style can be easily integrated into various application scenarios.

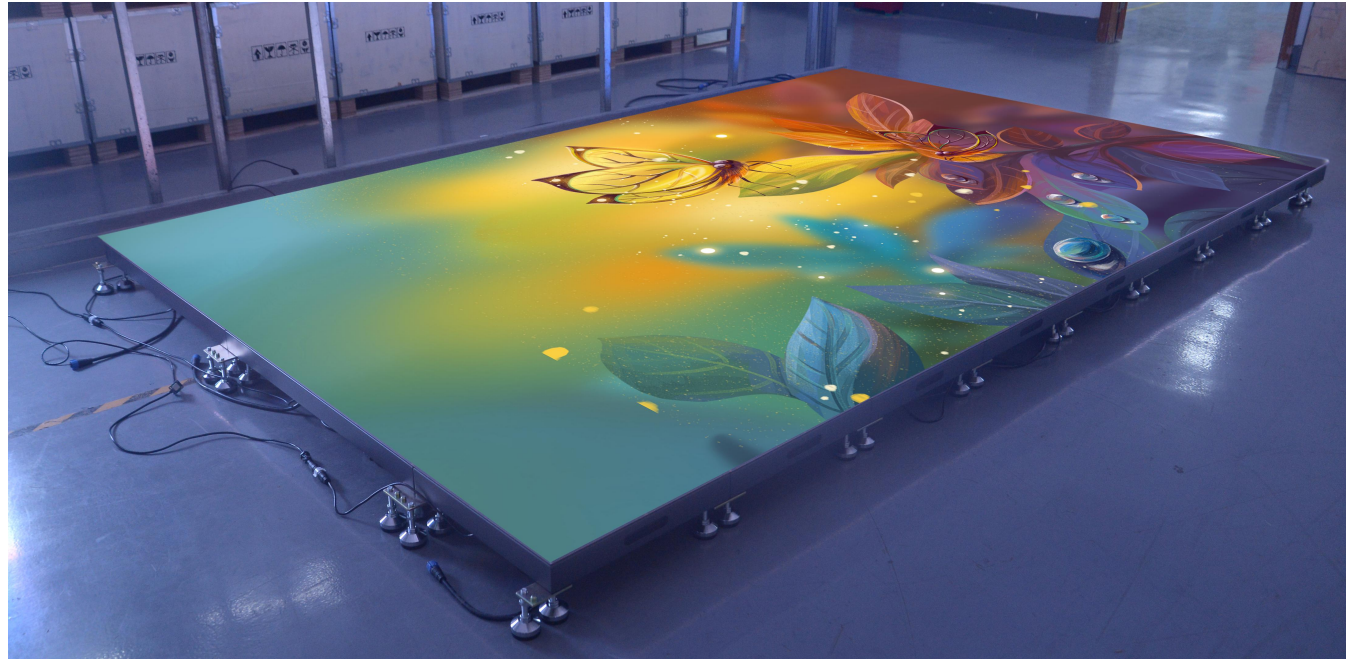
LED poster screen supports a variety of installation methods, such as vertical installation, floor-standing installation, hanging installation, wall hanging installation, and DIY creative splicing.



Poster LED Display

Pixel Pitch (mm)	1.25	1.53	2
LED Type	SMD/GOB		
Pixel Density (pixles/m ²)	640000	422500	250000
Brightness (cd/m ²)	700-1000	700-1000	700-1000
Scan	1/64	1/52	1/40
Application	Indoor		
Refresh Rate (Hz)	≥3840		
640*1920mm Cabinet Resolution (W*H)	512*1536	418*1254	320*960
Cabinet Size (mm)	640*1920 / 960*1920		
Module Size (mm)	320*160/240*120		
Weight (KG/cabinet)	56		
Maintenance Method	Front / Back		
Horizontal / Vertical Viewing Angle	≥170°/ ≥170 °		
Gray Scale	13-17		
Colour Temp	3200~ 12000		
Contrast Ratio	≥9500:1		
Input Signal	HDMI , DVI/VGA. RGBHV Composite ,S-VIDEO ,YPb Pr(HDTV)etc ...		
Max Power Consumption (W/m ²)	650		
Avg. Power Consumption (W/m ²)	200		

D Series



Product Feature

Dance Floor tile LED display can be equipped with touch functions or sensors to enable interaction with the audience, such as games, information queries, etc.

Dance Floor tile LED display is usually made of wear-resistant and pressure-resistant materials, and can withstand heavy weight and frequent trampling.

Dance Floor tile LED display is suitable for commercial advertising, public art, transportation hubs, entertainment venues and other fields.



Dance Floor LED Display

Pixel Pitch	2.5	2.604	2.976	3.91	4.81	5.2	6.25
Module Resolution (W*H)	100*100	96*96	84*84	64*64	52*52	48*48	40*40
Module Size (W*H*D) mm	250*250*18						
Panel Resolution (W*H)	200*200	192*192	168*168	128*128	104*104	96*96	80*80
Panel Size (W*H*D) mm	500*500*78						
	500*1000*78						
Resolution(dot/m ²)	160000	147456	112896	65536	43264	36864	25600
Protection level	Indoor(IP54)			Indoor(IP54) / Outdoor(IP67)			
White Balance Brightness (nits)	Indoor ≥1300 / Outdoor ≥3000						
Color Temperature (K)	6000—9300 adjustable						
View Angle (°)	>120						
Power Consumption (A/unit module)	DC 6 ∞7						
Max Power Consumption (W/m ²)	800						
Average Power Consumption (W/m ²)	300						
Power Requirements	AC100-240V						
Drive Method	Constant current drive						
Frame Frequency (Hz)	50&60						
Refresh @60Hz Frame Signal input	≥3840 / ≥7680						
Life Typical Value (hrs)	100,000						
Work Temperature (°C)	-20 — 55						
Storage Temperature (°C)	-30 — 60						
Defective Ratio	≤4/100000						
Interaction	Interactive/Non-Interactive						

Creativity

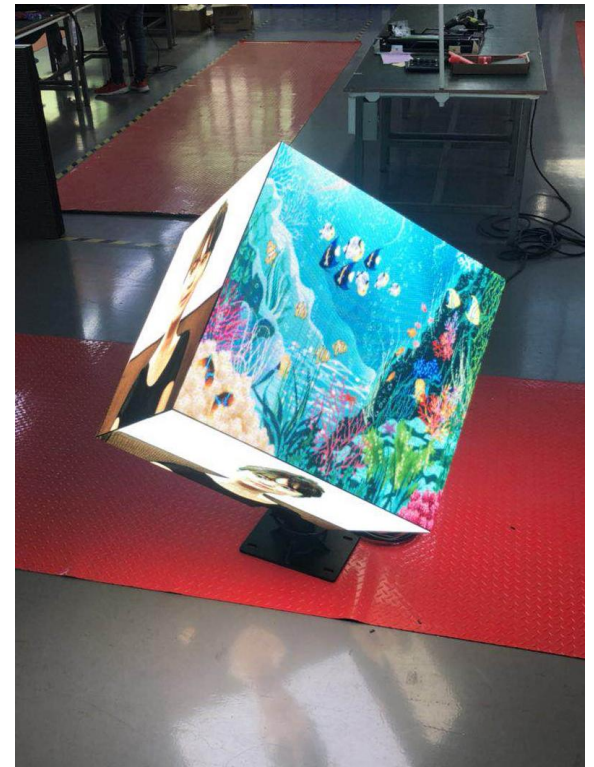
Series



Coke Bottle LED Display



Ball LED Display



Magic Cube LED Display

Creativity

Series



Square Column LED Display

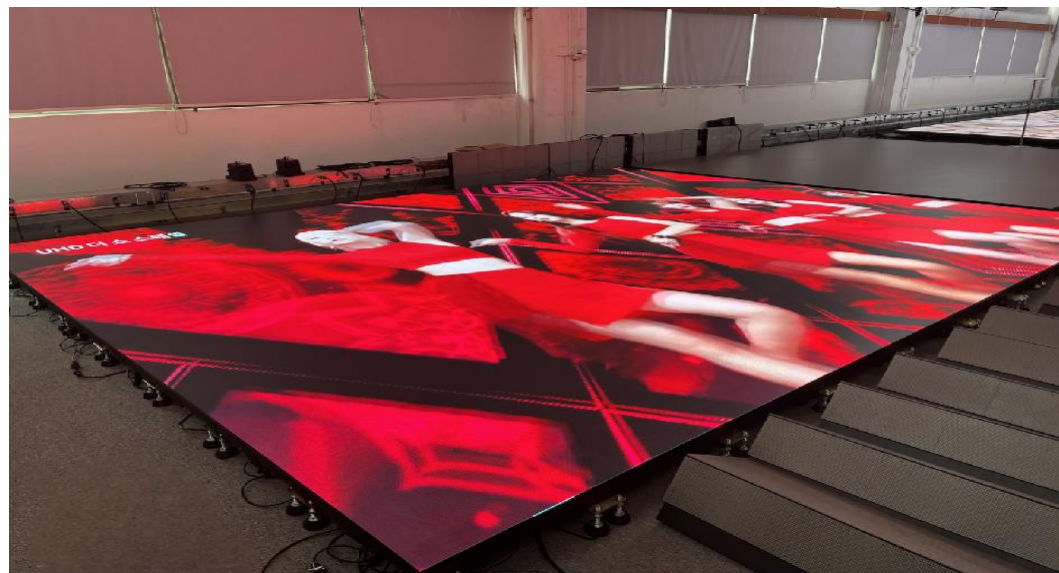


Round LED Display

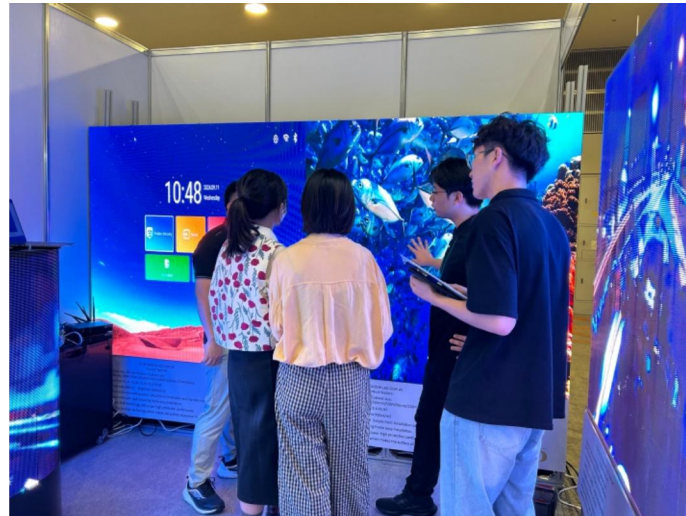


Multiple Arcs LED Display

Cooperation



Exhibition



Meeting

▶ ▶ LIONLED WANNA LIGHT
THE WORLD UP



China Phone:+86 13640601168 Japan Phone:+81 06-6131-9452 America Phone: +86 18825102031

Sales Managers:melo@szlionled.com Marketing Director:salesmanagemars@szlionled.com

Oversea Sales:overseasales@szlionled.com Oversea Support:overseasupport@szlionled.com

Japan Office Add.:大阪府大阪市北区梅田1-11-4-1000 大阪駅前第4ビル10階

America Office Add.:7255 Corporate Dr #320, Houston, TX 77036

China Factory Add.:4th Floor,2th Building,YiBao Lai Technology Park,190 Chongqing Road Fuyong,Baoan District,Shenzhen,China



www.szlionled.com