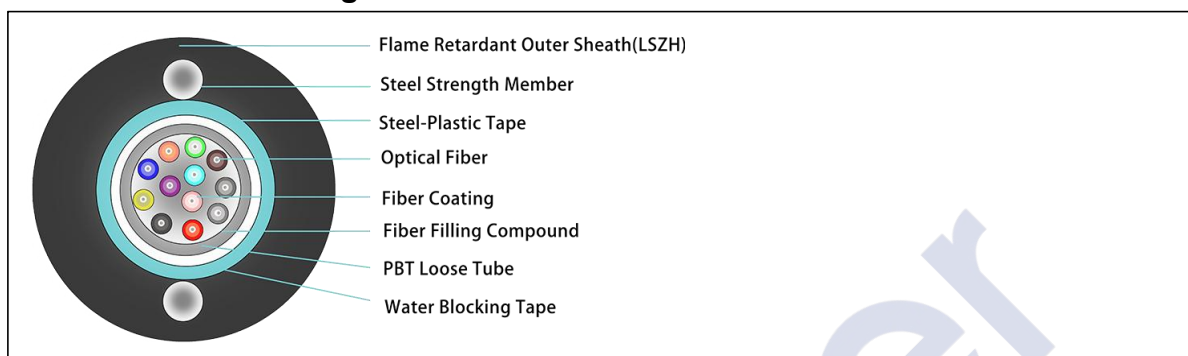


GYXTZW Flame-retardant CST Armor Central Tube

Optical Fiber Cable

Product Structure Diagram



Product Description

Fibers are positioned in a loose tube that is made of high-modulus plastic and filled with tube filling compound. The water blocking tape is applied around the central tube. Then the tubes are armored with a corrugated steel tape (CST) longitudinally. Two parallel steel wires are embedded in LSZH jacket.

Product features

- Good mechanical and thermal performance.
- Hydrolysis resistant loose tube.
- Tube filling compound ensures critical protection of fiber.
- Two parallel steel wires ensure tensile strength.
- Small diameter, light weight and convenient installation.
- Corrugated steel tape(CST) enhancing moisture-proof.
- LSZH jacket ensuring good flame-retardant performance.
- Long delivery length.

Application

Duct/ Non Self-supporting Aerial Installation.

Technical Specifications

Product Parameters

Project	Technical indicators
Counts	2-12
Max.fiber counts per tube	12
Cable Diameter(mm)	7.9
Reference weight(Kg/km)	90
Fiber Type	G652D G655 G657 50/125 62.5/125
Tensile Strength(N)	Long/Short Term:600/1500
Crush Resistance(N/100mm)	Long/Short Term:300/1000
Bending Radius(mm)	Static/Dynamic:10D/20D
Temperature(°C)	Storage /Operation:-40°C~+70°C