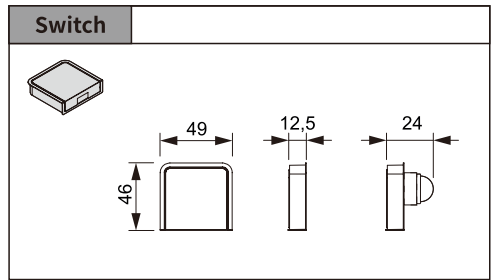
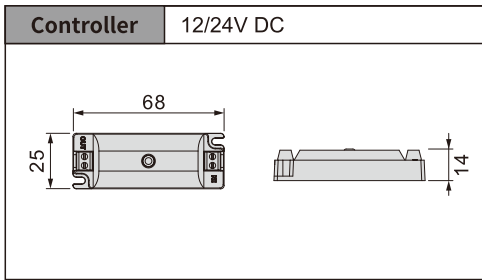
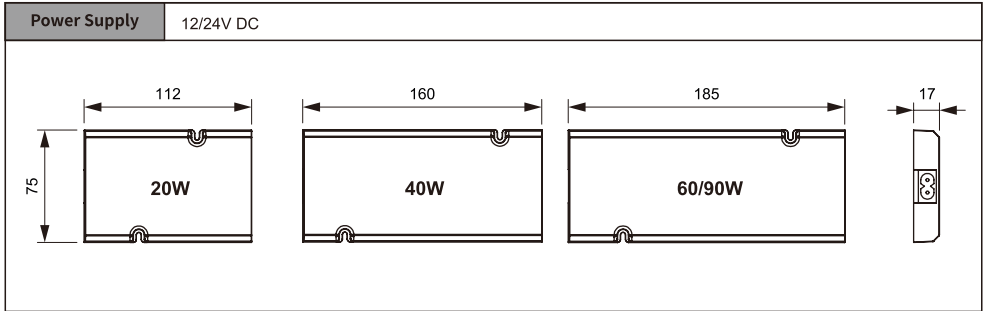
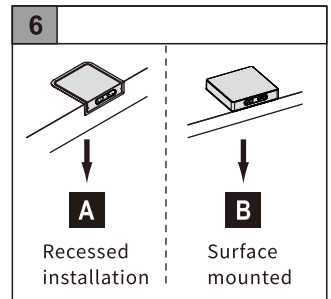
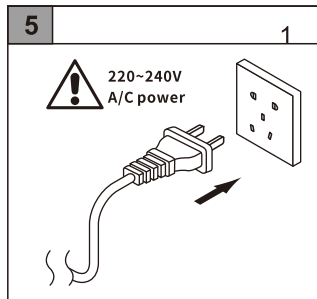
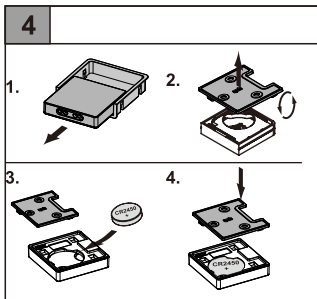
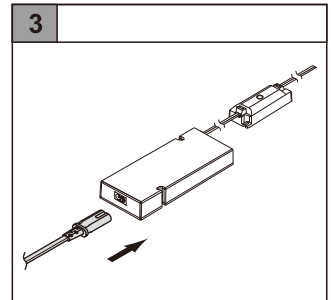
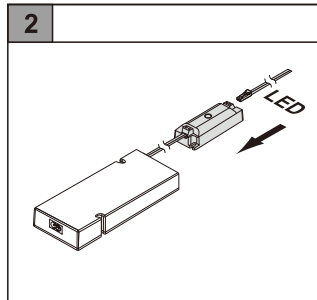
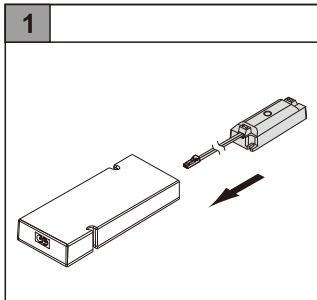


BLE5.0 Mesh Single Channel Wireless Controller Manual

Dimensions & Specifications:



How to connect:



How to install the wireless switch:

A Recessed installation

1. Drilling a hole with dimensions: $45 \pm 0,1$ mm width, $47,4 \pm 0,1$ mm depth, and $11,5 \pm 0,1$ mm height, with a radius $R = 6$.
2. Inserting the mounting bracket into the hole.
3. Placing the wireless switch into the bracket.
4. The final installed unit.

B Surface mounted

Way 1: Use screw

Use screw

15,00
25,00
23,5-26,5mm

9-12mm
5-8mm

The distance between battery cover to the installation hole. (The battery cover is used to hold and fasten the switch to the cabinet board.)

Screw the battery cover to the cabinet board. Caution: As there is a moveable gap between the battery cover and the switch, a short distance should be reserved before determining the installation position.

Make sure the distance between the switch and the cabinet door is proper.

Way 2: Use double-sided tape

9-12mm
5-8mm

As there is a moveable gap between the battery cover and the switch, a short distance should be reserved before determining the sticking position.

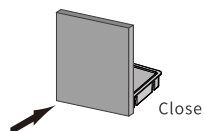
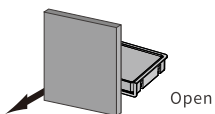
Make sure the distance between the switch and the cabinet door is proper.

1. Surface mounting preparation showing the switch being placed on a surface.

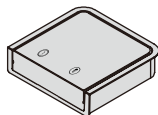
Wireless switch function description:

Door detection switch (Cabinet door opens, the light turns on, door close, light off)

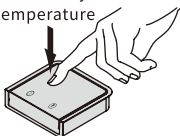
Detection distance: 0-12cm



Switch to adjust brightness and color temperature



Press and hold to adjust the color temperature

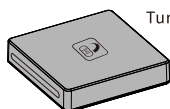


Press and hold to adjust the brightness

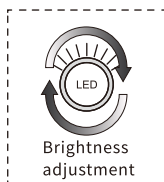
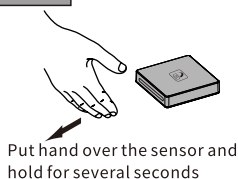
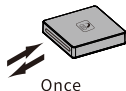


Switch to control LED lights by swiping hand from side

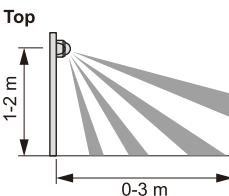
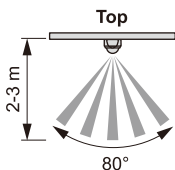
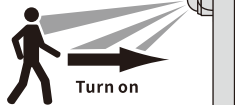
Detection distance: 3-12cm



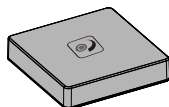
Turn on / turn off



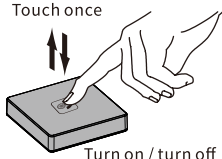
PIR Switch (Lights on when people come close)



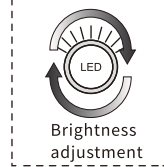
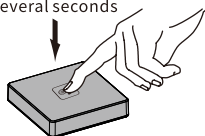
Touch Switch



Touch once

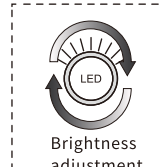
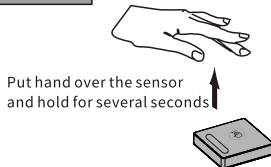


touch and hold for several seconds



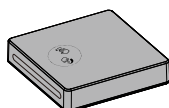
Switch to control LED lights by swiping hand from top

Detection distance: 3-12cm

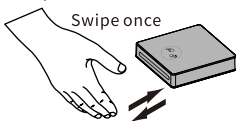


2-in-one Switch (swiping hand from side or touch)

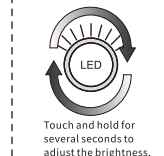
Detection distance: 3-12cm



Turn on / turn off

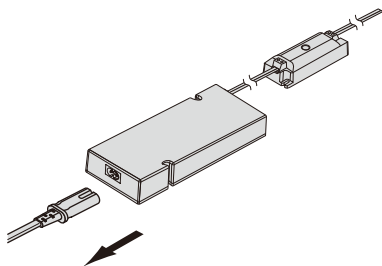
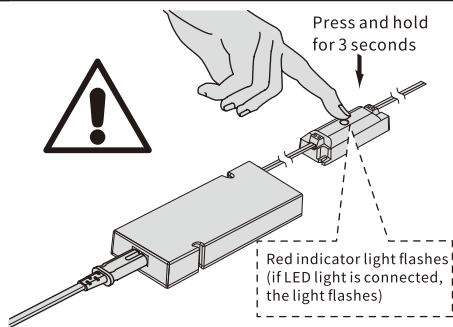


Swipe once

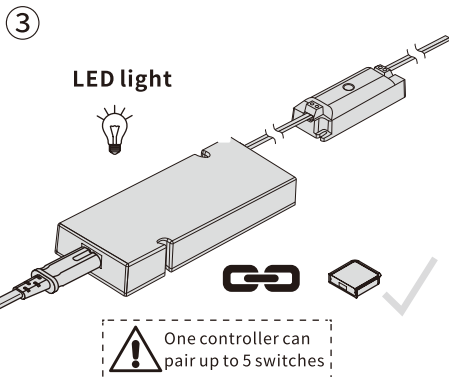
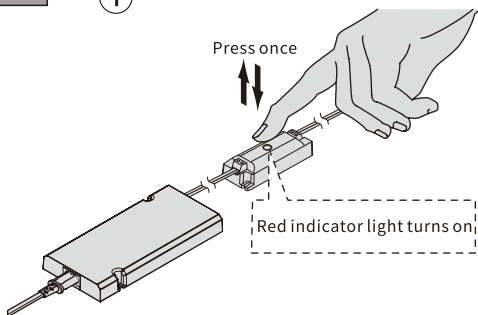



Wireless switch function description:

1 

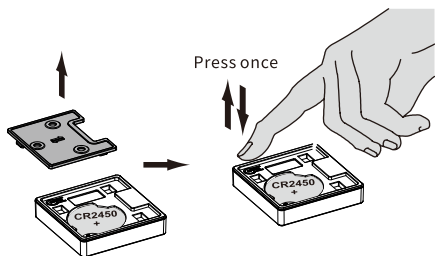


2 



 Please complete the pairing in 20 seconds.

2 



Scan the code to view the operation manual



When the controller is paired with a Door detection switch, it can only pair with more door detection switch, other categories of switches will not be able to be paired, or cause maloperation. If other categories of switch should be paired, please clean up the paired data beforehand.
Do not pile up the LED driver and Controller!