

Type		KSP80	KSP100	KSP120	KSP150	KSP180
Capacity (kg/h)		200-300	300-500	500-600	700-900	1000-1500
Energy consumption (kWh/kg)		0.3-0.4	0.3-0.4	0.3-0.4	0.3-0.4	0.3-0.4
A / Length (mm)		12,890	13,780	14,570	15,530	16,540
B / Width (mm)		2,820	2,960	2,670	2,910	3,260
C / Height (mm)		3,370	3,530	3,530	3,690	4,000
Extruder	Screw Diameter (mm)	Φ80	Φ100	Φ120	Φ150	Φ180
	L/D	32-36	32-36	32-36	32-36	32-36
	Motor power (kW)	55-75	110-132	160	250	315-400
Filter (options)	Two position plate type	●	●	●	●	●
	Two position piston type	○	○	○	○	○
	Back flush piston type	○	○	○	○	○
	Automatic self-cleaning type	○	○	○	○	○
2nd Extruder (optional)	Screw Diameter (mm)	Φ100	Φ120	Φ150	Φ180	Φ200
	L/D	12	12	12	12	12
	Motor power (kW)	30	37	55	75	90
Downstream (options)	Water ring pelletizer	●	●	●	●	●
	Strand pelletizer	○	○	○	○	○
	Automatic strand pelletizer	○	○	○	○	○
	Underwater pelletizer	○	○	○	○	○

● standard ○ alternative



ABILITY

Thanks to innovative pelletizing technology and proprietary process. KiTech dedicated to supplying you intelligent recycling pelletizing system with superior quality which have high productivity could get high property output pellets.



STABILITY

KSP pelletizing system is available for 24 hours working non-stop operation. Optimized design and top brand components to each unit. Which could minimize the downtime ratio and save the maintenance time. This ensures the maximum availability and highest productivity for user.



EFFICIENCY

KSP pelletizing system is designed in all details for efficiency improving. The modular design could simplify the planning and accelerate the implementation. The system have very low consumption values for electricity, water and labor. The operating costs and maintenance costs are absolutely reduced. Consistently the lowest investment costs and highest value creation.



MODULARITY

KSP pelletizing system is a flexible modular system. The process required by any customer for different application could be combined freely. This design reduces planning, construction and assembly time effectively. And it's possible to adjust the system regard to technological modification and market changing. This makes the investment future-proofing.



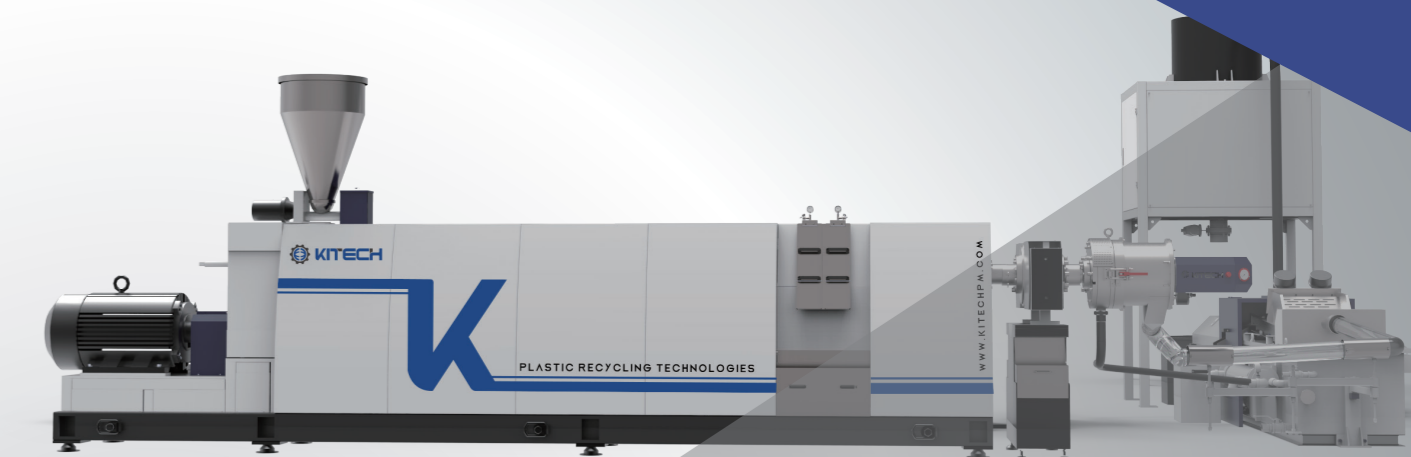
CONTROL

Automatic control of KSP pelletizing system reduces the labor operation, makes the whole system easier and more reliable to control, the remotes monitoring and maintenance are available for different production lines. The intelligent control has display for operating data, it also collects the data of the consumption and the capacity from production line. Which ensures the connection between the enterprises and the Internet, will improve the efficiency of enterprise management.



SERVICE

KSP pelletizing system is a flexible and customer-oriented recycling solution. All the components of the whole line is globally well-known brands, which ensures the reliable operation and serves your exact needs. Furthermore, Our engineers will partner with you for the whole project. Building design, overseas installation, commissioning and training are available. Machine warranty with spares in stocking and in-time delivery. Consistently quick and careful service in pre-sales and after-sales process.



Rigid Flakes Pelletizing System

KITECH MACHINERY CO.,LTD

JIANGSU KITECH MACHINERY CO.,LTD

Email : info@kitechpm.com

Tel : +86-512-5862 0105

Fax : +86-512-5896 2531

Web : www.kitechpm.com

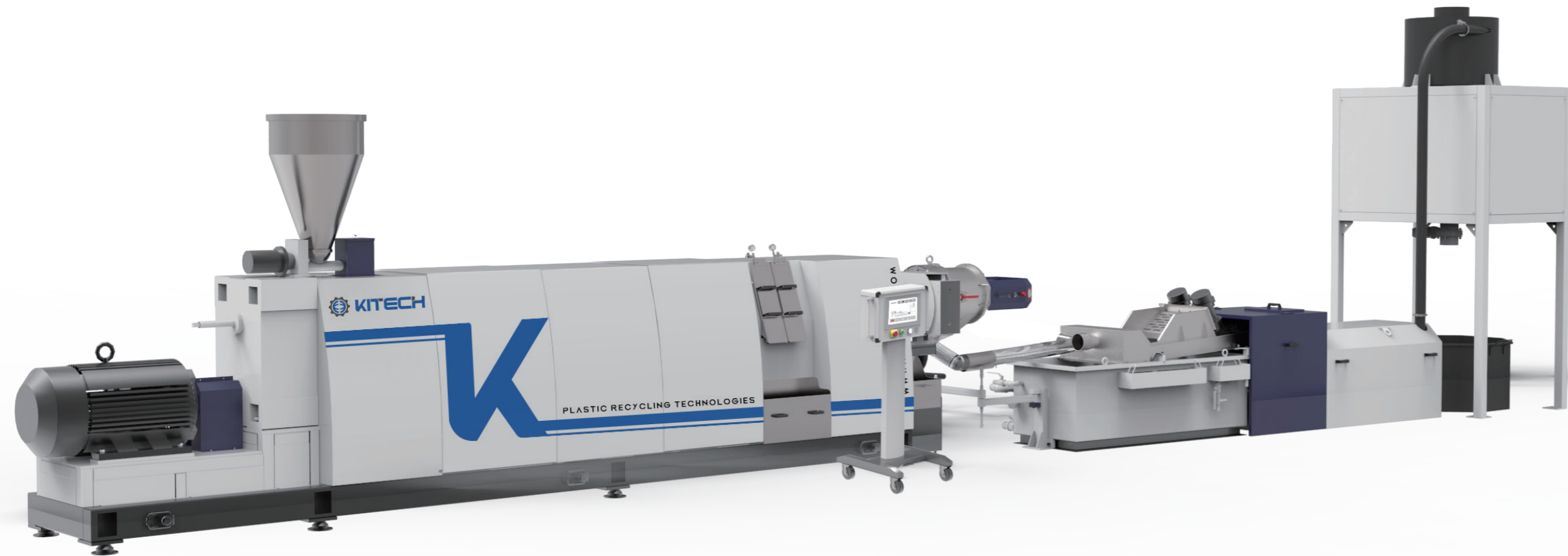
Add : No.7 Jiulong industry park, Jinfeng Town, Zhangjiagang City, Jiangsu, China



PLASTIC RECYCLING SOLUTION

KSP series single screw extrusion and pelletizing system

KSP series single screw extrusion and pelletizing system combines quantitative feeding, high efficiency extruder, different types of filter and different types of pelletizer by modular design. It provides best solution for PE, PP, PS, ABS, PET, PA and many other rigid plastic regrind recycling.



Dosing feeder unit



Extrusion unit



Filtration unit



Pelletizing unit



Intelligent control unit

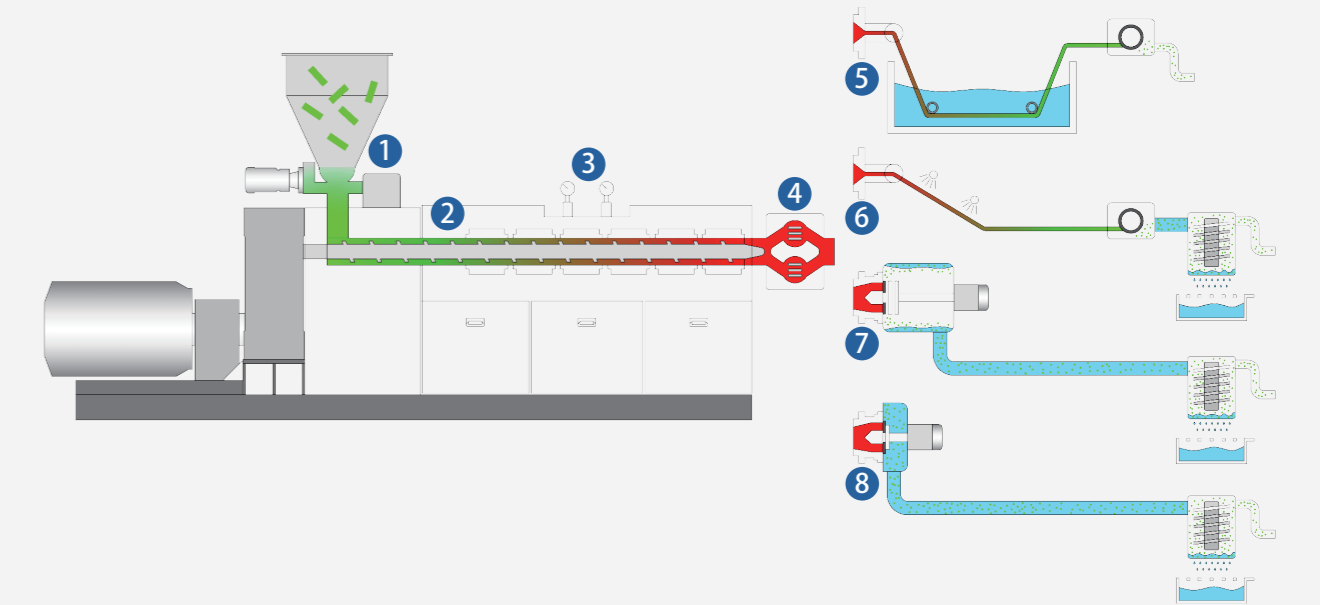
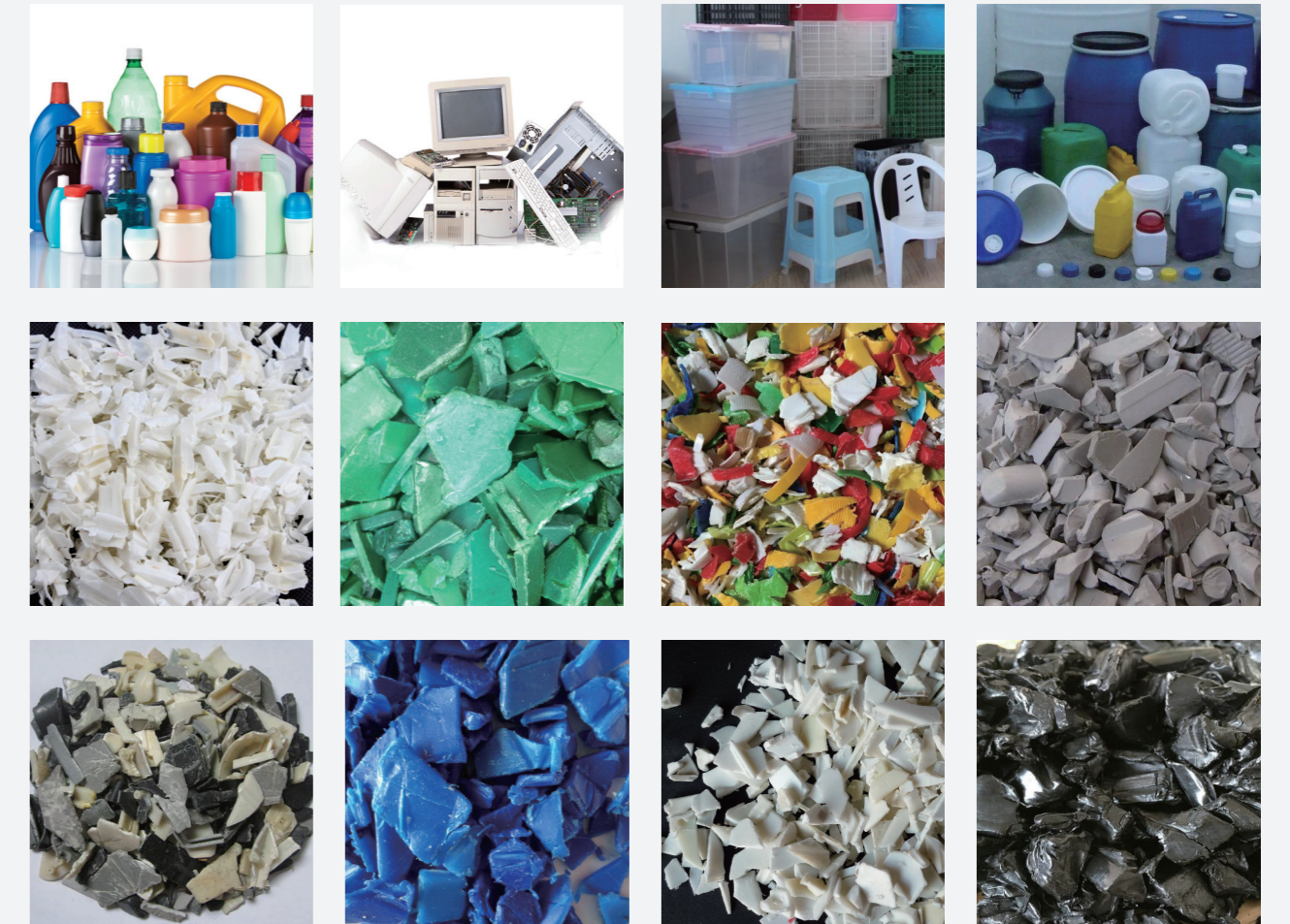
- Frequency control belt conveyor or screw conveyor are optional as loading device according to different material form.
- Ferrous and nonferrous metal separating at feeding unit, which provides efficient protection of the whole line.
- Dosing feeder with PLC intelligent controller, which ensures the extruder run steady.

- High efficiency barrel and screw used for extruder with excellent plasticizing result and high output capacity. Adopt high wear resistant alloy material to ensure 1.5 times service life of normal one.
- Force double vacuum degassing system to get rid of the low molecular, moisture and printing ink effectively, make sure high quality output pellets.
- High efficiency infrared heater can heat rapidly with continuous thermal insulation, more than 30% energy consumption can be saved than normal heater.
- Diversified L/D ratio optional for different application. Multi-vacuum degassing system and double stage extrusion system help you solve the problem of recycling heavy contaminated polymer.

- Plate type, piston type, back flush type and automatic self-cleaning type filter, you have different choice according to impurity contents in material and your habit.
- Plate type filter is cost-effective and easy to operate which mainly used for regular thermoplastic as usual filtration solution.
- Large area filter can be used to ensure the filtration effect. Minimize the impurity content in the filtered melt and improve the quality of final pellets product.

- Water ring pelletizer, strand type pelletizer, automatic strand pelletizer and under water pelletizer, KiTech provides four different pelletizing solutions for you aiming at different MFI polymer will get different shape output pellets.
- The uniformity, gloss and properties of final pellets can be ensured for either pelletizing solution.

- Thanks to Siemens PLC and HMI, KCP series machine provides high intelligent operation system which is easy to operate and save man power.
- PLC intelligent control system available for remote diagnosis, control and monitoring to ensure that all user's systems can be updated and maintained and operated for a long term.
- Weighing and metering system helps you monitor the output and energy consumption of production line in real time under different materials and production conditions. All data can be connected to ERP system for quantitative assessment.



1 Dosing feeder

2 Extruder

3 Vacuum degassing

4 Filter

5 Strand pelletizer

6 Automatic strand pelletizer

7 Water ring pelletizer

8 Underwater pelletizer