

| Type | KCP80 | KCP100 | KCP120 | KCP140 | KCP160 | KCP180 | |
|-----------------------------|------------------------------|----------|----------|----------|----------|-----------|---------|
| Capacity (kg/h) | 150-250 | 300-420 | 400-600 | 600-750 | 800-950 | 1000-1200 | |
| Energy consumption (kWh/kg) | 0.2-0.33 | 0.2-0.33 | 0.2-0.33 | 0.2-0.33 | 0.2-0.33 | 0.2-0.33 | |
| A / Length (mm) | 10,300 | 10,300 | 11,400 | 11,400 | 14,800 | 14,800 | |
| B / Width (mm) | 6,200 | 6,200 | 6,450 | 6,450 | 6,850 | 6,850 | |
| C / Height (mm) | 3,500 | 3,750 | 3,980 | 4,250 | 4460 | 4850 | |
| Compactor | Volume (L) | 300 | 500 | 800 | 1000 | 1200 | 1400 |
| | Motor power (kW) | 37-45 | 55-75 | 75-90 | 90-132 | 132-160 | 160-185 |
| Extruder | Screw Diameter (mm) | Φ80 | Φ100 | Φ120 | Φ140 | Φ160 | Φ180 |
| | L/D | 30-40 | 30-40 | 30-40 | 30-40 | 30-40 | 30-40 |
| | Motor power (kW) | 55-75 | 90-110 | 132-160 | 160-200 | 250-315 | 315-355 |
| Filter (options) | Two position plate type | ● | ● | ● | ● | ● | ● |
| | Two position piston type | ○ | ○ | ○ | ○ | ○ | ○ |
| | Back flush piston type | ○ | ○ | ○ | ○ | ○ | ○ |
| | Automatic self-cleaning type | ○ | ○ | ○ | ○ | ○ | ○ |
| 2nd Extruder (optional) | Screw Diameter (mm) | Φ100 | Φ120 | Φ150 | Φ150 | Φ180 | Φ200 |
| | L/D | 10-18 | 10-18 | 10-18 | 10-18 | 10-18 | 10-18 |
| | Motor power (kW) | 37-45 | 45-55 | 55-75 | 75-90 | 90-110 | 110-160 |
| Downstream (options) | Water ring pelletizer | ● | ● | ● | ● | ● | ● |
| | Strand pelletizer | ○ | ○ | ○ | ○ | ○ | ○ |
| | Automatic strand pelletizer | ○ | ○ | ○ | ○ | ○ | ○ |
| | Underwater pelletizer | ○ | ○ | ○ | ○ | ○ | ○ |

● standard ○ alternative



ABILITY

Thanks to innovative pelletizing technology and proprietary process, KITECH dedicated to supplying you intelligent recycling pelletizing system with superior quality which have high productivity could get high property output pellets.



STABILITY

KCP pelletizing system is available for 24 hours working non-stop operation. Optimized design and top brand components to each unit. Which could minimize the downtime ratio and save the maintenance time. This ensures the maximum availability and highest productivity for user.



EFFICIENCY

KCP pelletizing system is designed in all details for efficiency improving. The modular design could simplify the planning and accelerate the implementation. The system have very low consumption values for electricity, water and labor. The operating costs and maintenance costs are absolutely reduced. Consistently the lowest investment costs and highest value creation.



MODULARITY

KCP pelletizing system is a flexible modular system. The process required by any customer for different application could be combined freely. This design reduces planning, construction and assembly time effectively. And it's possible to adjust the system regard to technological modification and market changing. This makes the investment future-proofing.



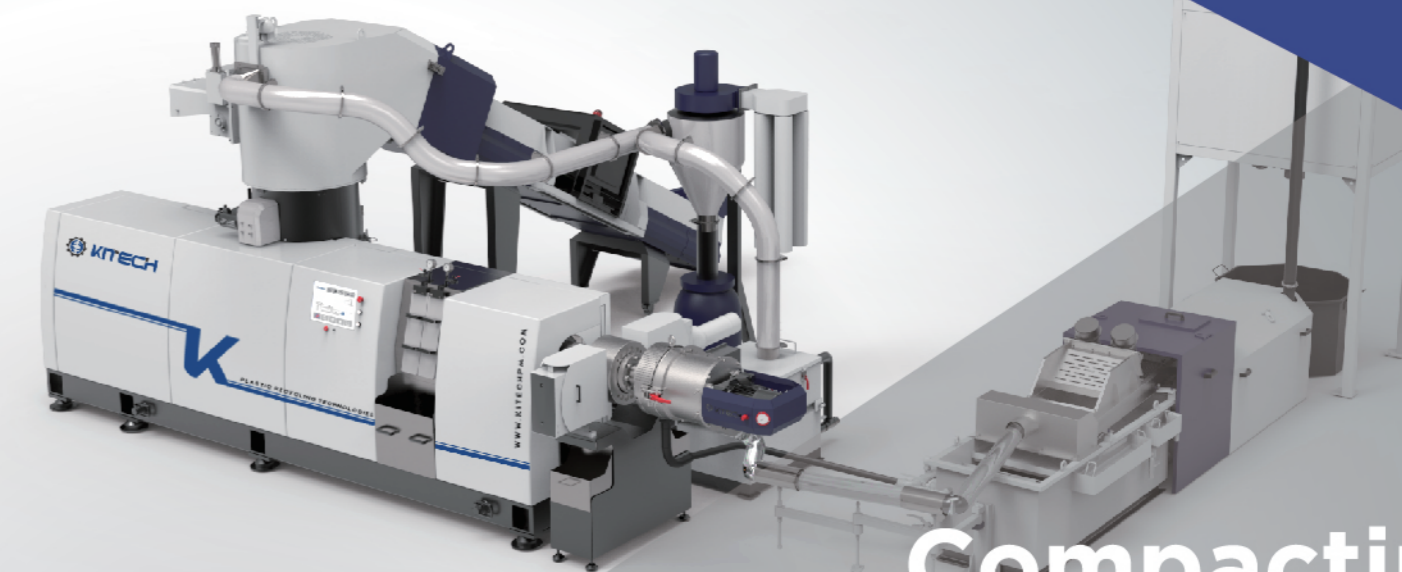
CONTROL

Automatic control of KCP pelletizing system reduces the labor operation, makes the whole system easier and more reliable to control, the remotes monitoring and maintenance are available for different production line. The intelligent control has display for operating data, it also collect the data of the consumption and the capacity from production lines. Which ensures the connection between the enterprises and the Internet, will improve the efficiency of enterprise management.



SERVICE

KCP pelletizing system is a flexible and customer-oriented recycling solution. All the components of the whole line is globally well-known brands, which ensures the reliable operation and serves your exact needs. Furthermore, our engineers will partner with you for the whole project. Building design, overseas installation, commissioning and training are available. Machine warranty with spares in stocking and in-time delivery. Consistently quick and careful service in pre-sales and after-sales process.



Compacting Pelletizing System

KITECH MACHINERY CO.,LTD

JIANGSU KITECH MACHINERY CO.,LTD

Email: info@kitechpm.com

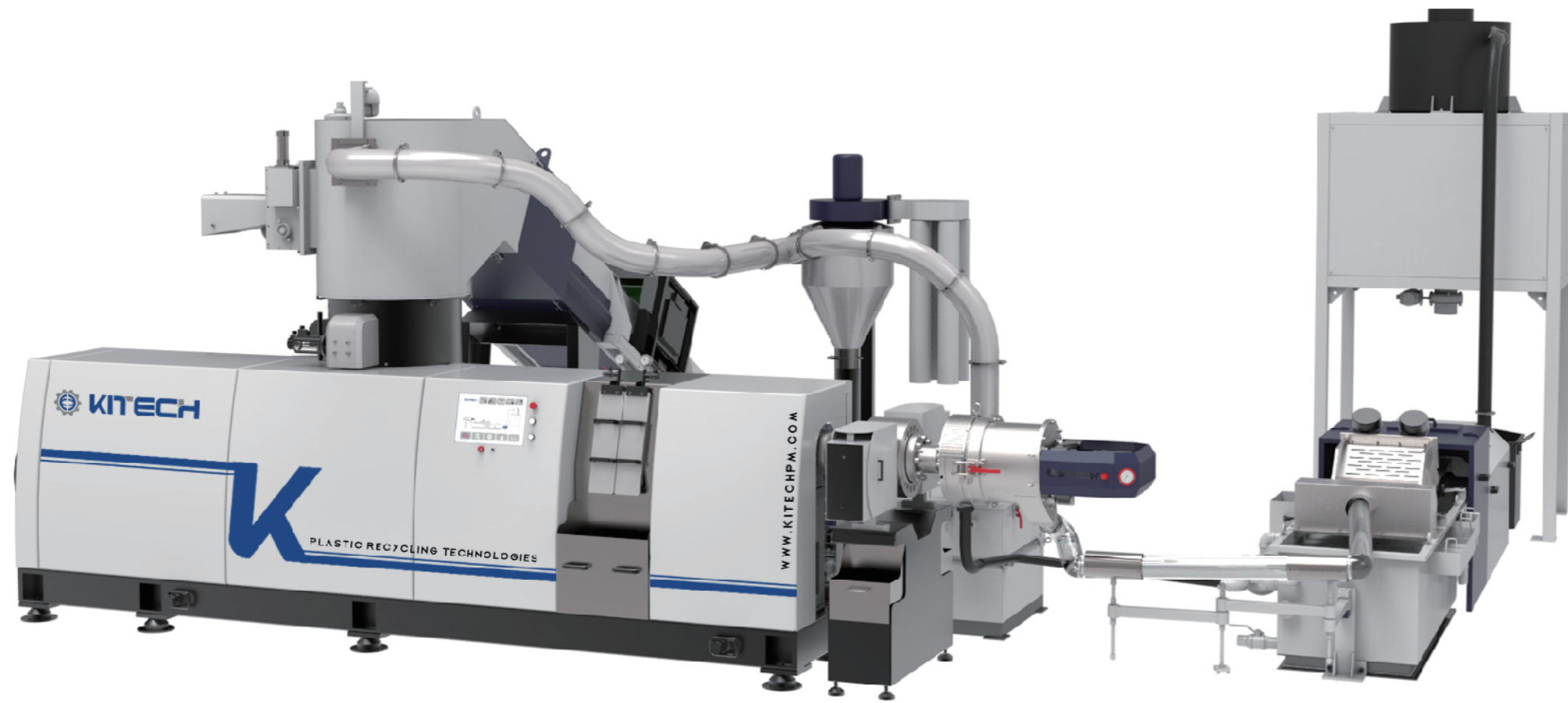
Tel : +86-512-5862 0105

Fax : +86-512-5896 2531

Web : www.kitechpm.com

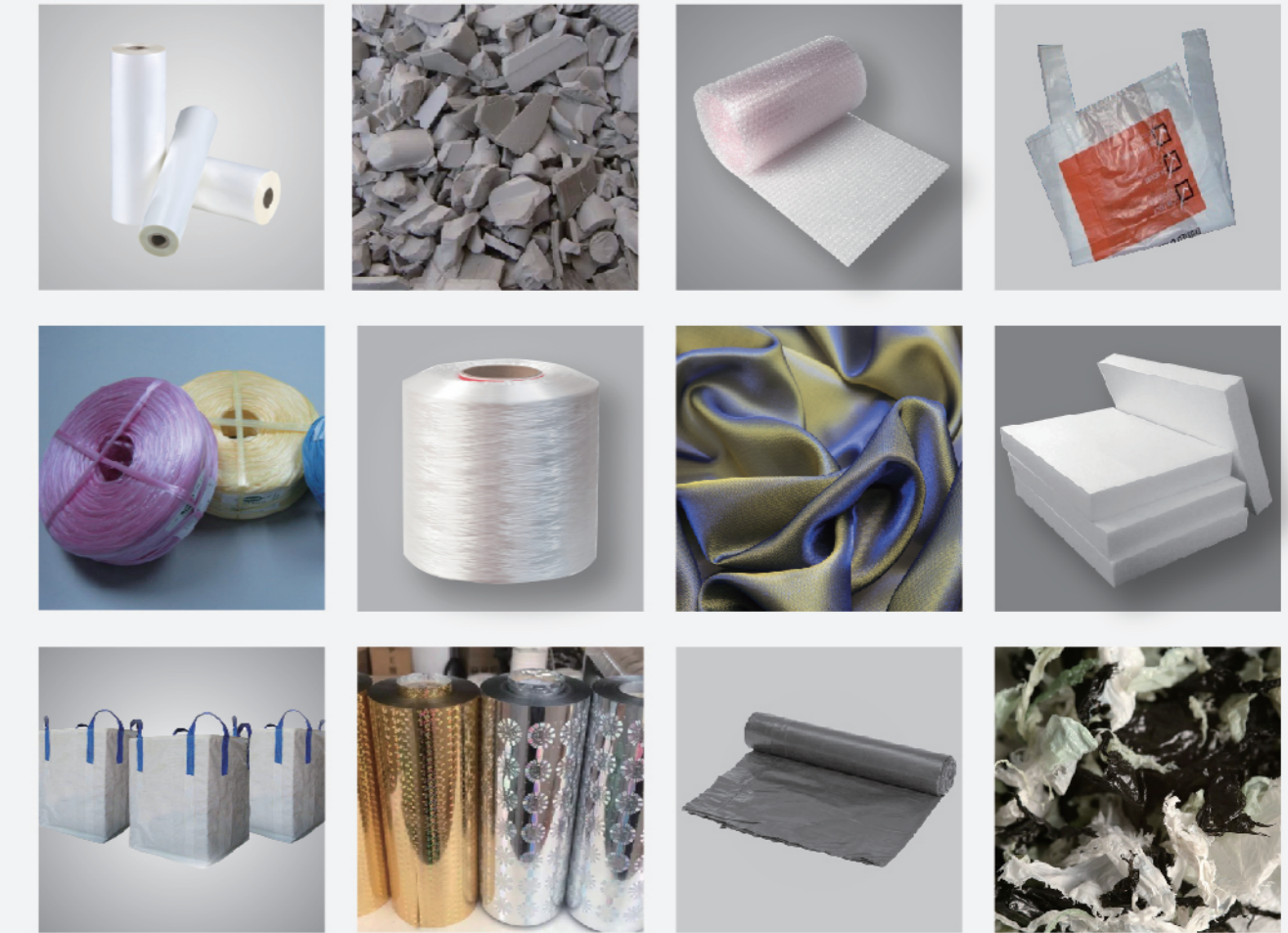
Add : No.7 Jiulong industry park, Jinfeng Town, Zhangjiagang City, Jiangsu, China





KCP series compacting pelletizing system

KCP series compacting pelletizing system is a three in one recycling machine designed for low density plastic articles. It could provide the excellent re-pelletizing solution for film, raffia, filament, woven bag and nonwoven fabric which sourced from production factory and washing line. KCP series pelletizing system has a wide application in PE, PP, CPP, BOPP, PS, PPS, EPS, ABS, PA, PLA, PET materials recycling field.



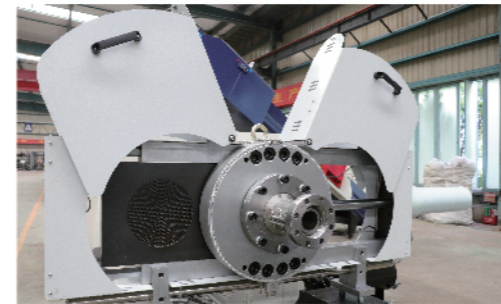
Feeding and compacting unit

- Smart feeding system designed for different material types and forms.
- Efficient processing of material from light to heavy.
- Cutting, mixing and preheating the material and feeds it into extruder by centrifugal force.



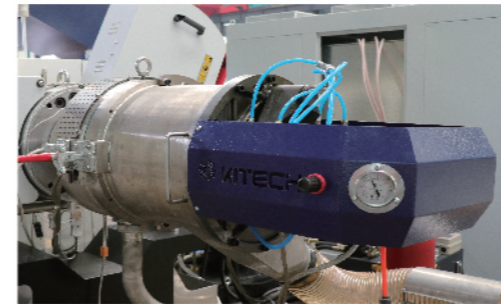
Extrusion unit

- High wear-resistant barrel and screw ensures 1.5 times service life than usual.
- Optimized vacuum degassing system ensures high effective venting of volatiles.
- Diversified L/D ratio optional for different application.
- High efficiency infrared heater can heat rapidly with continuous thermal insulation.



Filtration unit

- Plate type filter is cost-effective and easy to operate.
- Large area filter is optional with high filtration performance, Reducing screen changing frequency.
- Back flush type and automatic self-cleaning type filter are available.



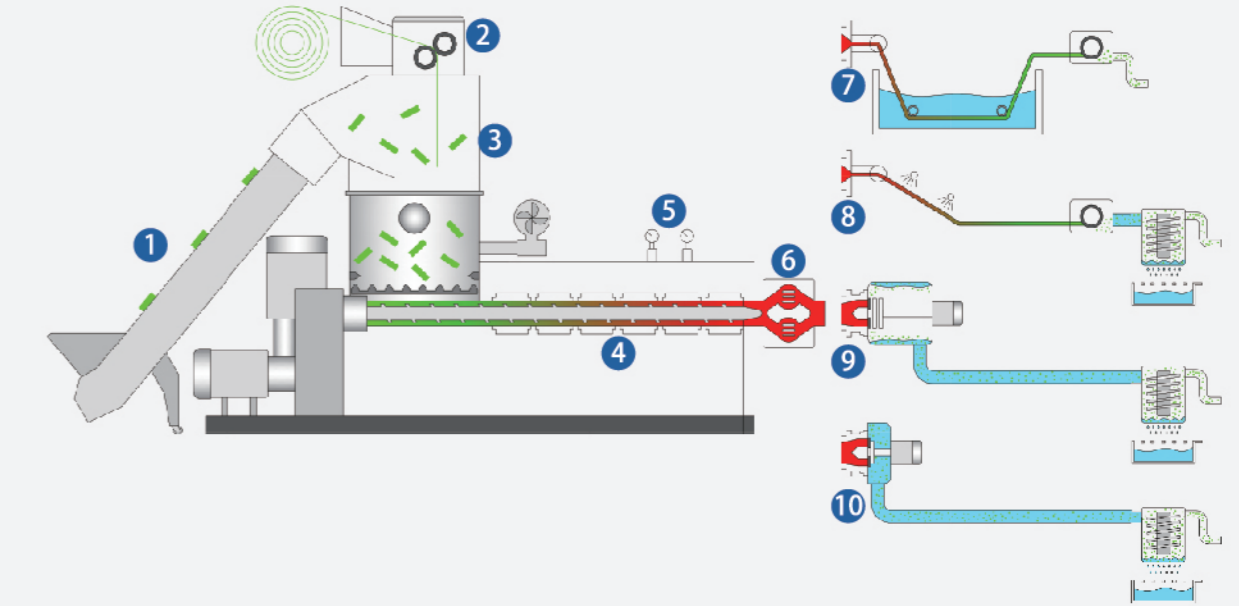
Pelletizing unit

- Water ring pelletizer, strand type pelletizer, automatic strand pelletizer and under water pelletizer, KITECH provides different types of pelletizing solutions. For different MFI polymers and different users.
- High quality and stable throughput pellets.



Intelligent control unit

- Thanks to Siemens PLC and HMI, KCP series machine provides high intelligent operation system.
- Easy to operate and labour-saving.
- All data can be connected to ERP system for quantitative assessment.



1 Belt conveyor

4 Extruder

7 Strand pelletizer

10 Underwater pelletizer

2 Nip roller

5 Vacuum degassing

8 Automatic strand pelletizer

3 Compactor

6 Filter

9 Water ring pelletizer