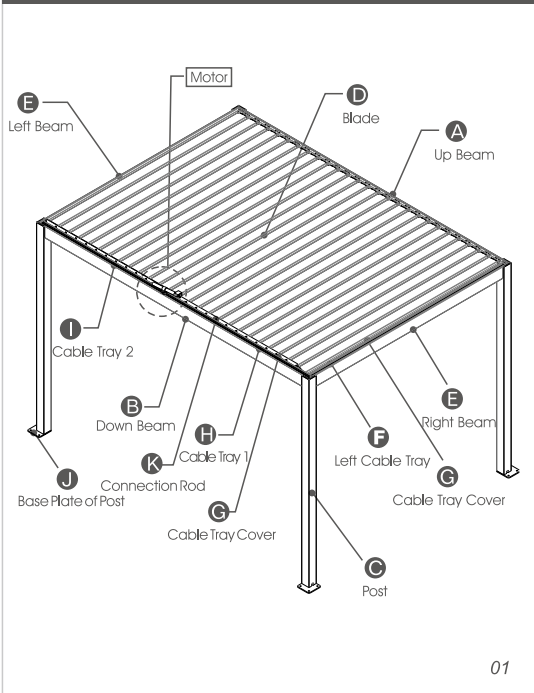


• INSTALLATION DIAGRAM



• LIST OF ALUMINIUM PROFILE

A Up Beam	
B Down Beam	
C Post	
D Blade	
E Left & right beam	
F Left Cable Tray	
G Cable Tray Cover	
H Cable Tray 1	
I Cable Tray 2	
J Base Plate of Post	
K Connection Rod	

02

• LIST OF COMPONENTS

Motor Mouting Base Components		
Name	Picture	Size
Mounting Base		57.3*62.5mm
Hexagon socket pan head screws		M8*25
Hexagon socket pan head screws		M6*25
Hexagon socket pan head screws		M8*40
Lock Nut		M8/M6
Post Base Plate Components		
Name	Picture	Size
Base Plate of Post		180*180*10mm
Cross countersunk head tapping screws		ST4.2*30
Hexagon socket countersunk head screws		M6*25
Expansion bolt		M10*100
Decoration Cover Components		
Name	Picture	Size
Decoration Cover		110*110*13.5mm
Phillips pan head tapping screws		ST4.2*16

03

• LIST OF INSTALLATION TOOLS

Blade Components		
Name	Picture	Size
Rotation shaft clamp 1 Cover		34*35mm
Phillips pan head tapping screws		ST4.2*16
Hexagon socket pan head screws		M8*25
Stainless steel ring		φ 10*14
Lock Nut		M8
Washer		φ 10
Motor Cover Components		
Name	Picture	Size
Motor Cover		L=500mm
Motor Cover U Slot		L=30mm
Phillips pan head tapping screws		ST4.2*16
Hexagon socket pan head screws		M6*20
Lock Nut		M6
Cable Tray Components		
Name	Picture	Size
Phillips pan head tapping screws		ST4.2*16

04

• LIST OF INSTALLATION TOOLS

Item	QTY	Picture	Description	Remark
levelling instrument	1		Measure the flatness of ground , the verticality of the post and the horizontality of the beam.	Prepared by customer
Aluminium Cutting Machine	1		Adjust the height of post according to the actual ground flatness on site.	Prepared by customer
Hammer drills and drill bits	1		Used for the opening of the column blasting bolts	Prepared by customer
Adjustable wrench or socket	1		Used for the installation of post bolts	Prepared by customer
Hammer	1		Used to fix the post blasting bolts.	Prepared by customer
Hand drill and drill bit, bit (cross and hexagon socket)	1		Used for screws connection, socket opening installation, etc	Prepared by customer
Tape measure or laser rangefinder	1		Used for measuring site and installation positioning	Prepared by customer

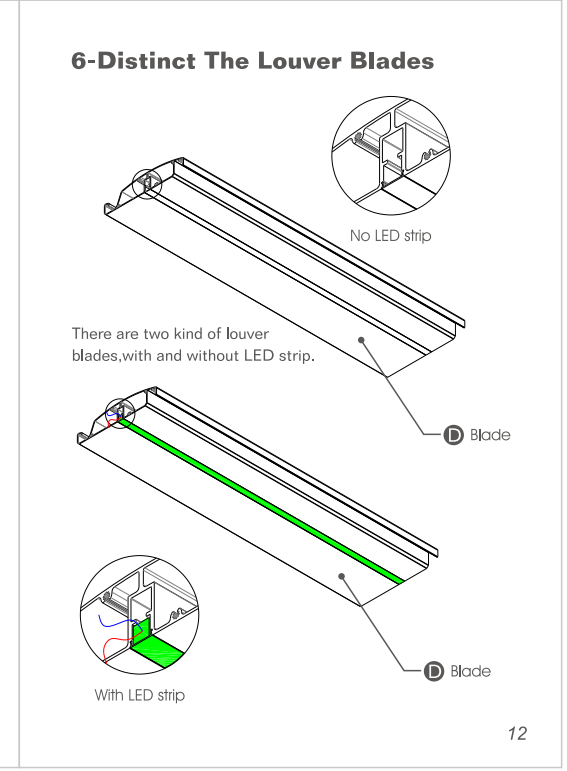
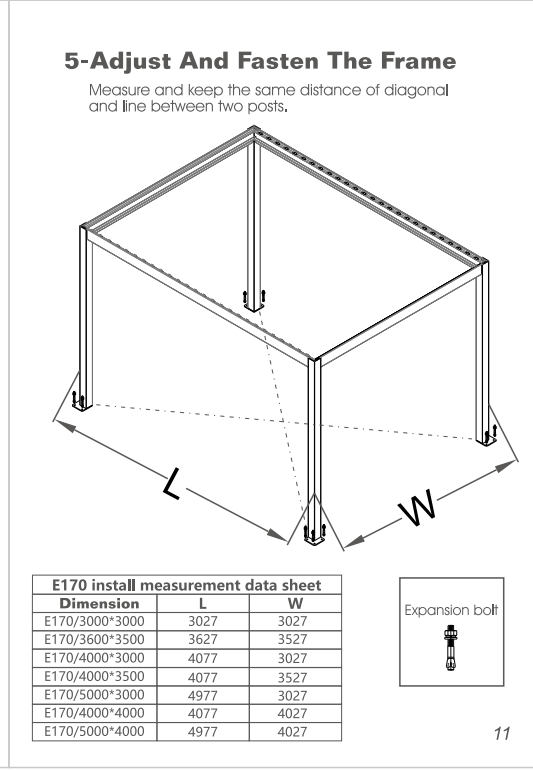
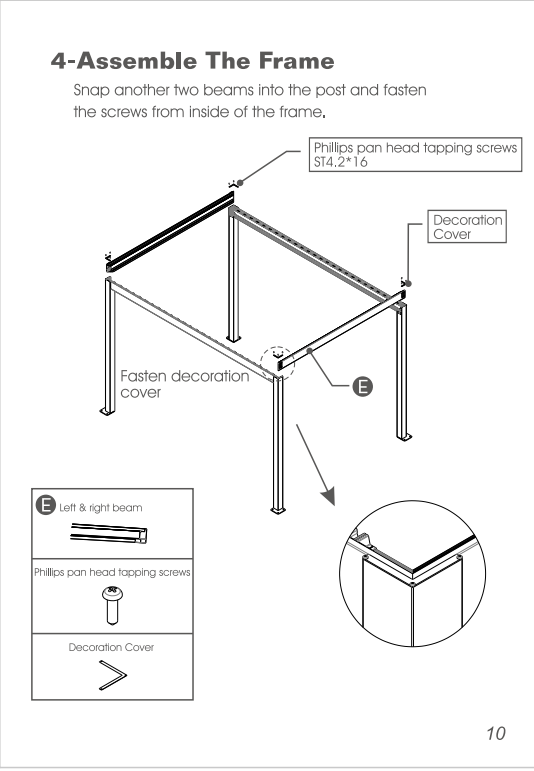
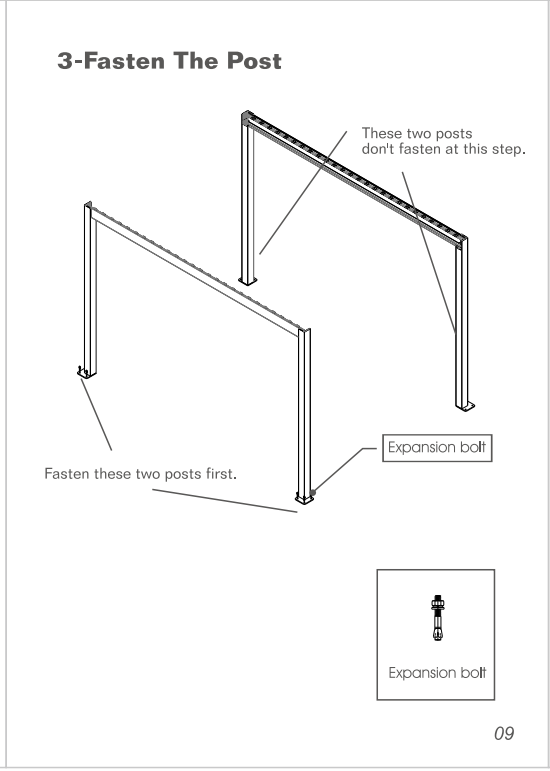
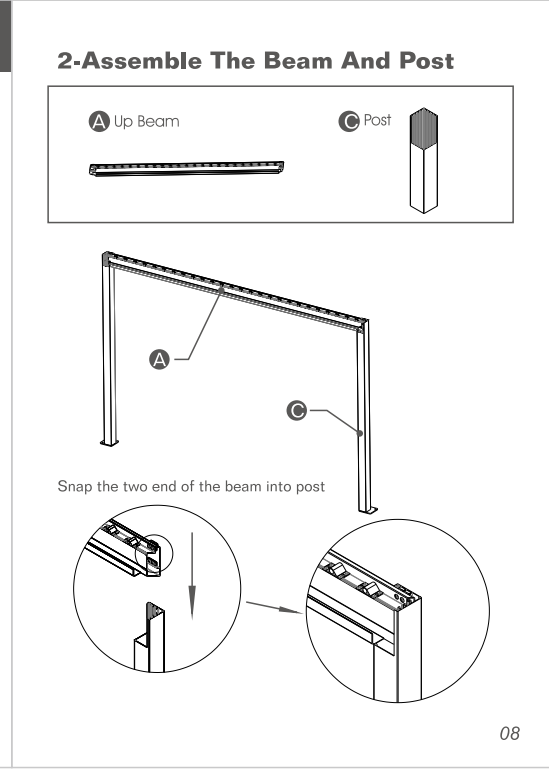
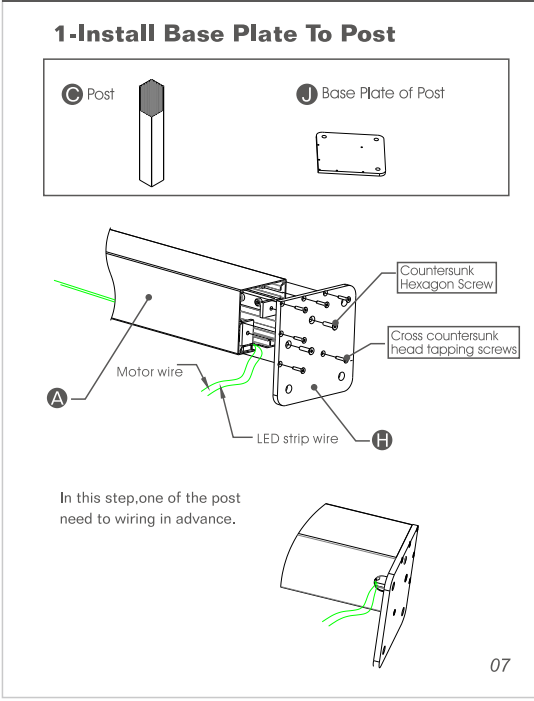
05

• LIST OF INSTALLATION TOOLS

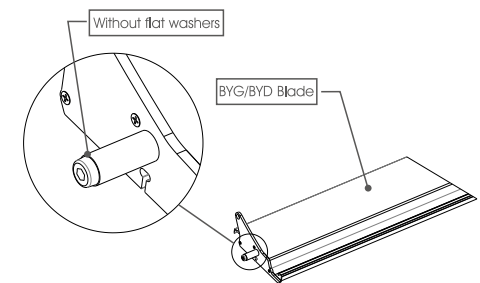
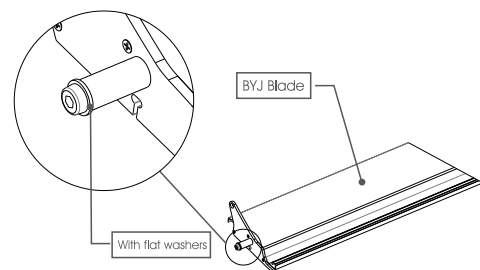
Item	QTY	Picture	Description	Remark
Pencil	1		Used for marking and recording	Prepared by customer
Ladder	2		Used for the installation of louver roof	Prepared by customer
Caulking gun and sealant	1		Used for the sealing connection of the post and beam and corner connection of the sink.	Prepared by customer
Allen Key	1		Used for fixing screws(posts and beams) Sizes for E170 are 4mm, 5mm and 6mm	Exist in SUNLEVER's accessory box
Non-slip gloves	2		Used for handling of materials and accessories	Exist in SUNLEVER's accessory box
1.5-2.0m ² wire	/		Used for the installation of the pergola far away from the power supply and the wiring of zip screen.	SUNLEVER's accessory box is equipped with standard length, but customer need to prepare extra length on demand
Power Socket	1		Used for installation tools, and the test of electrical circuits of motors and LED lights.	Prepared by customer

06

• INSTALLATION STEPS



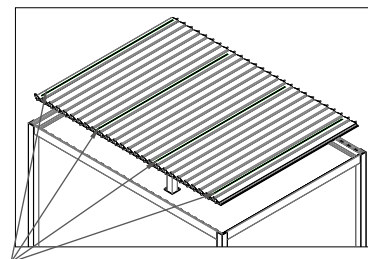
7-Distinct The Louver Blades



13

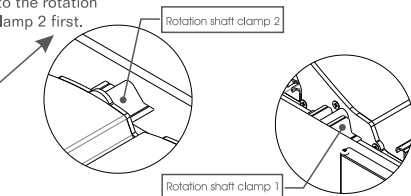
8-Install Louver Blade

Installation Order: Install BYJ blade first, then BYG/BYD blade.



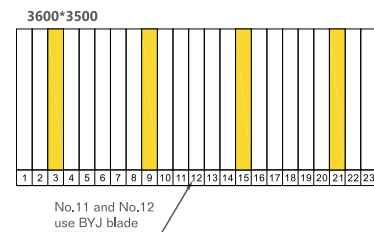
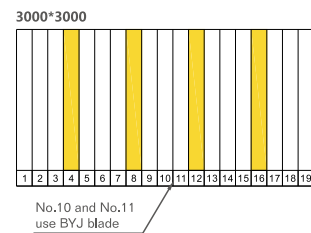
Install louver blade's rotating rod into the rotation shaft clamp 1 and 2.

Insert to the rotation shaft clamp 2 first.



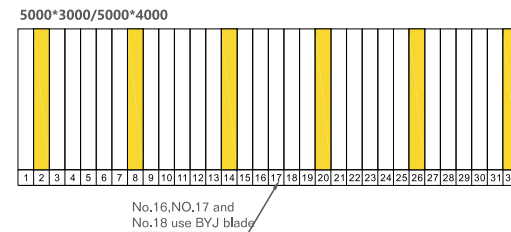
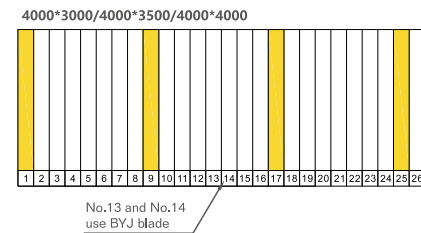
14

9-Different Size E170 Blades Position Diagram-1



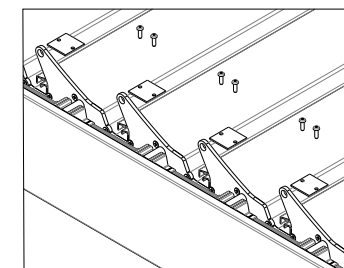
15

9-Different Size E170 Blades Position Diagram-2

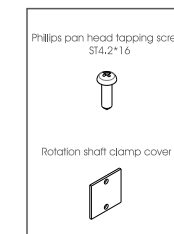
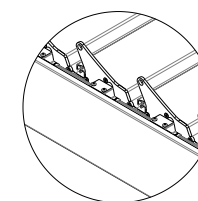


16

10-Fix Louver Blades Roating Rod

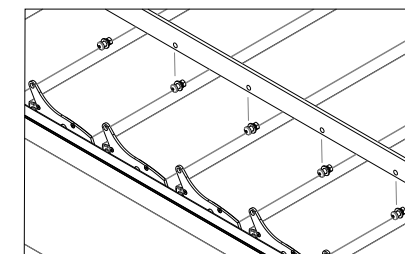


Use pan head tapping screws fix Rotation shaft clamp cover 1 on Rotation shaft clamp 1.

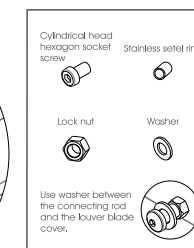
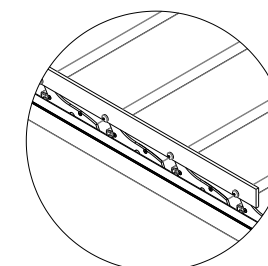


17

11-Connecting Rod Installation

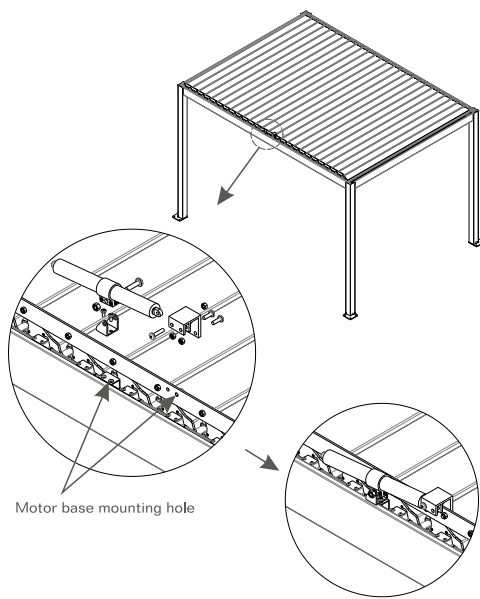


Install connection rod.



18

12-Install Motor



19

13-Install Cable Tray

- 1.Cable tray 1 mounting on the motor side, each slot match with a LED strip louver blade.
- 2.Fix with self-tapping screws.
- 3.After wiring,install cable tray cover.
- 4.Use same way to install cable tray 2.

Phillips pan head tapping screws S14.2*16

Cable Tray 1

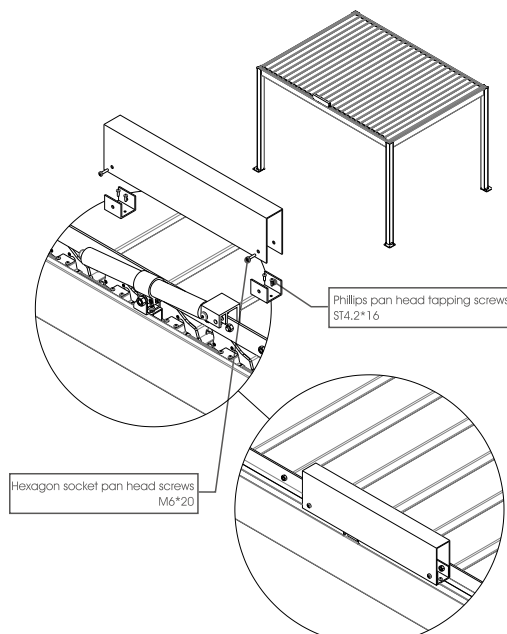
- 1.Left cable tray mouting close to left beam.
 - 2.Fix with self-tapping screws.
 - 3.This cable tray can be installed according to actual needs.
- (If install motorized ZIP screen,suggest install left cable tray.)

Phillips pan head tapping screws S14.2*16

Left Cable Tray

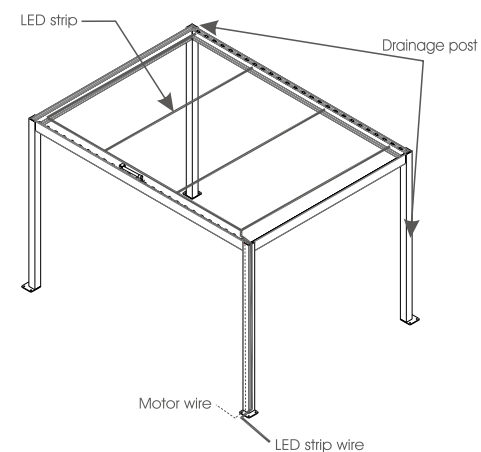
20

14-Install Motor Cover



21

15-Wiring Diagram



22