

MAIN FEATURES

- 12 or 15 needles, one head
 - Suitable for flat bed , cap/hat, finished garments embroidery and more
 - Perfect for home and commercial embroidery
 - Max. Embroidery Area: 350 mm x 1200 mm
 - Auto thread trimmer , auto color change, auto bobbin winder
 - Max. Speed 1200 SPM
 - 270° Cap Embroidery System
-
- 10 inch colorful touch screen display
 - Memory size: 200,000,000 stitches
 - USB input or direct transmission from PC via LAN or optional via Wi-Fi
 - Networkable and Wi-Fi capable
 - Thread break detection
 - Pre-sew design trace capable
 - Automatic memory retention
 - Mending function (back and skip stitches)
 - Online lettering with 10 kinds of popular fonts
 - Built in combination & segmentation of design
 - 16 kinds of languages supported
-
- Built-in universal power supply, 110V-240V self adaptable
 - Low noise and less vibration
 - Machine with wheels, so it can be easily moved around
 - Heavy duty steel base and stand to ensure both stability and mobility
 - Environment friendly packaging
 - Included cooling system to keep long time running without any problem
 - Emergency Stop



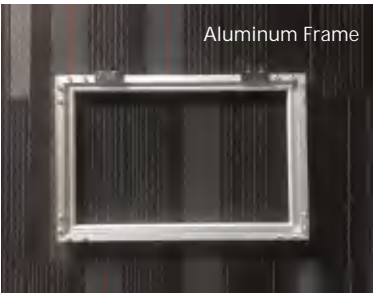
Needles	Heads	EBM Area	Packing Size			N.W/G.W
			Length	Width	Height	
12	1	350mm*1200mm	1460mm	1130mm	890mm	140kg/280kg
15						



STANDARD CONFIGURATION



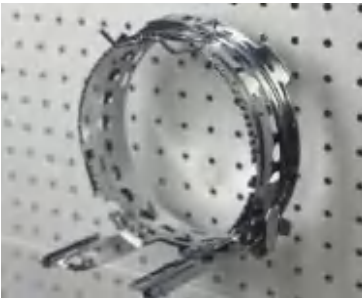
Extended Table



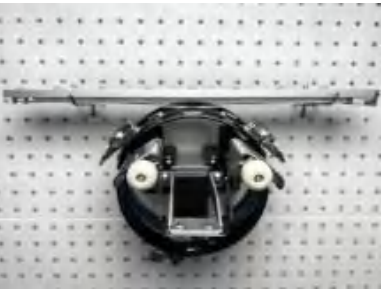
Aluminum Frame



Bobbin winder



Cap rings (2 sets)
snap into cap stationfor
embroidery preparation

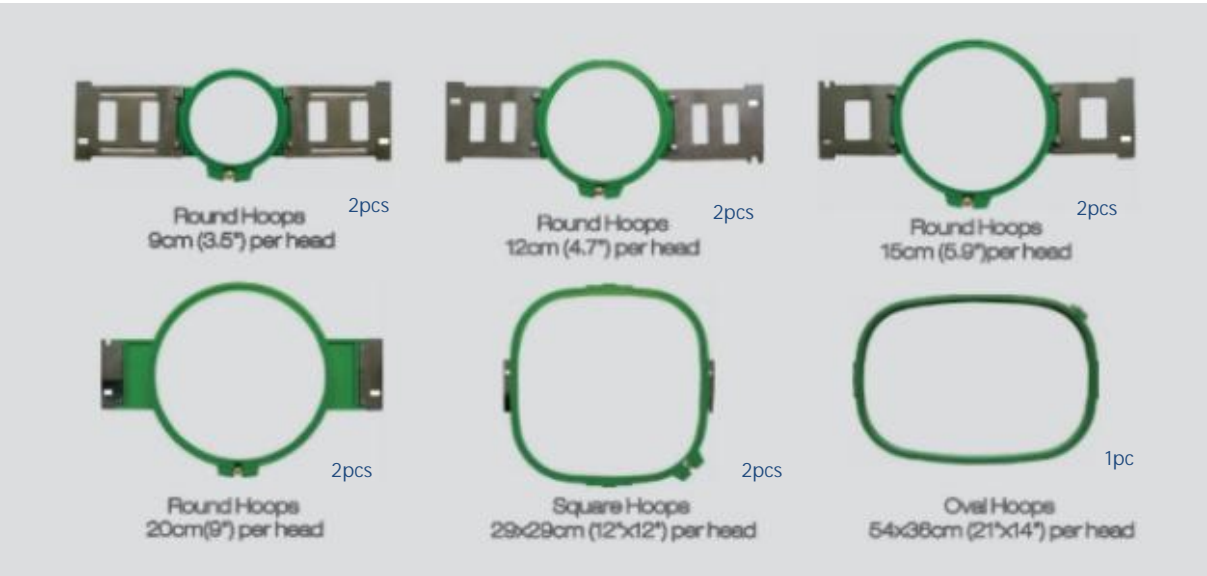


270° cap driver (1 set)
snaps into bracket holder for
the machine hoops



Cap station (1 set)
for easy snap in and
snap out preparation of caps

HOOPS INCLUDED



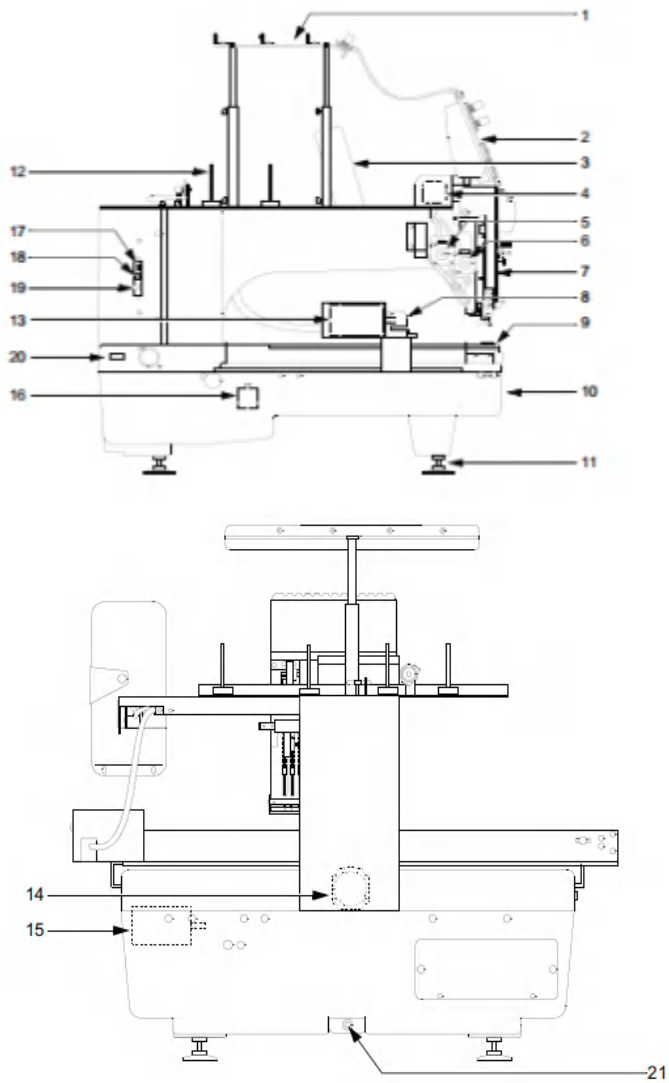
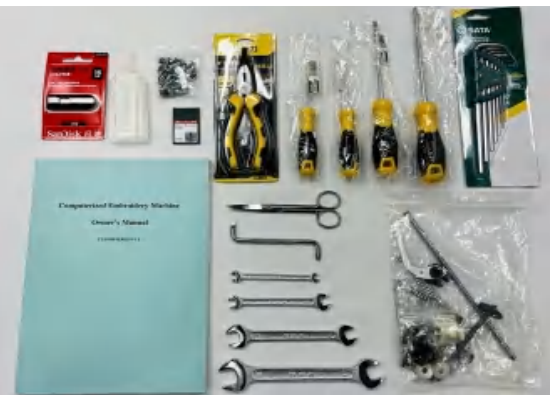
PARTS OF FJ-1201CL

The whole machine was
in the packaged case

- 1. Thread guide system
- 2. Tension base
- 3. Operation panel box
- 4. Color change motor
- 5. Thread holding motor
- 6. Jump motor
- 7. Needle bar case
- 8. Z-spec. frame
- 9. Needle plate
- 10. Stand
- 11. Leveling adjuster
- 12. Thread stand stud
- 13. X-axis motor
- 14. Main shaft motor
- 15. Y-axis motor
- 16. ATH motor
- 17. USB port
- 18. LAN port
- 19. Serial port
- 20. Power supply connector
- 21. Oil-drain hole

FUJA TOOLS KIT

included in the whole machine package
you only need to install the standing tables,
hoops and frames.

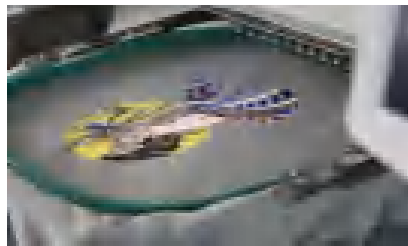


FUJA 8-IN-1 HOOP KIT
OPTIONAL CONFIGURATION



With the FUJA 8-in-1 hoop Kit, your dreams to embroider on various types of difficult products have come true. It will enhance your embroidering experiences.

FUJA 8-in-1 hoop set allows you to accomplish those very difficult embroidering challenges such as shirt pockets, socks, cap backs, bags, shirt sleeves, collar tips, gloves, cuffs of sleeves, ribbons, CD cases, etc.



Professional Optional Accessories



POCKET FRAME



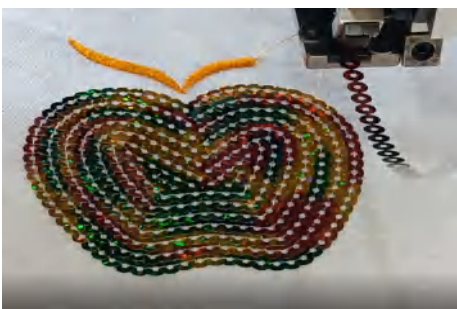
POSITIONS MARKER



FUJA DRILLING EQUIPMENT



SOCK DEVICE



FUJA SEQUIN DEVICE



EASY CORDING DEVICE

FUJA Smart EMB CAD software

Optional Support the popular embroidery format DST/DSB

