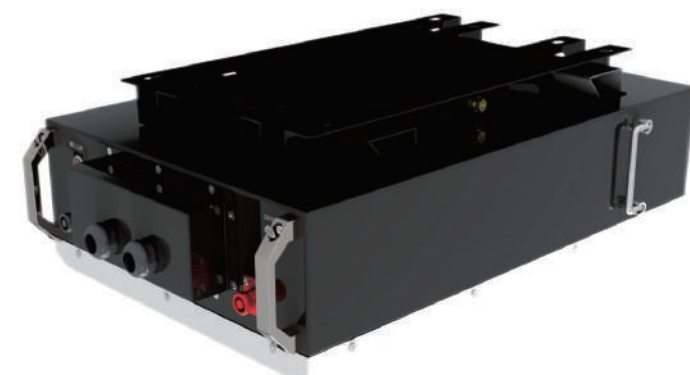


Wall Mounted Battery Series

25.6V 200Ah/5.12KWH
51.2V 100Ah/5.12KWH

Wall Mount Battery Series		
Model	TH-24200-W	TH-51100-W
Nominal Voltage	25.6V(8series)	51.2V(16series)
Capacity(Ah)	200AH	100AH
Rated Energy(KWH)	5.12KWH	
Usable Energy(KWH)	4.6KWH	
Max.Charge/Discharge Current(A)	100A/100A	50A/100A
Communieation	RS232-PC,TYPE-C(PC),RS485-Inverter,Canbus-Inverter	
Cycle Life	≥6000cycles@25°C,80%DOD,60%EOL	
Design Life	≥15Years(25°C)	
Weight(Approx) (KG)	Approx:48kg	Approx:48kg
Dimension (W/D/H)(mm)	580*390*185mm	
IP Grade	Ip21 /IP65(Optional)	
Safety(Pack)	CE-EMC,UN38.3,MSDS	
Safety(Cell)	UN38.3,MSDS,IEC62619,CE,UL1973,UL2054	
Protection	BMS, Breaker	
Operating Temperature(°C)	Charge:0°C~50°C ; Discharge : -20°C~50°C	

▲ This picture is for reference only, subject to the real thing !



Popular Product : Hot sale with 70,000+ units sold.



Proven Performance: Over 5 years of usage validation with excellent operation, safety, stability, and reliability.



Cost Advantage: Utilizing annual procurement and own factory casing production for cost advantages .



Space Saving: Compact size, save shipping cost and installation space for end customer.



Multiple Choice: A variety of capacities, sizes, design are available for selection, IP65 and IP21 available.

