

**MELAWATI MALL SHOPPING CENTER
DECORATIVE PERFORATED METAL FACADE**

|| Project Overview And Architectural Profile

Shopping mall in northeastern Kuala Lumpur jointly developed by two companies named Melawati Mall. The project is positioned as a one-stop shopping and lifestyle destination with its exquisite special-shaped punched aluminum veneer exterior walls. Become one of the recognizable icons.

Melawati Mall shopping center is located in the northeastern part of Kuala Lumpur, Malaysia. It covers an area of approximately 242,000 square feet with a total built-up area of approximately 945,000 square feet. It consists of 13 floors, including eight retail floors (from basement to the sixth floor) and five parking floors (from basement one to the second floor and from the seventh to the ninth floor). Melawati Mall is the sixth shopping center and the first development project of Kepong Commercial in Malaysia.

Project Schedule:

July 2016 - February 2017

Project location:

Malaysia

The products we offer for exterior interior/ suspension systems:

Total area≈12,800 square meters

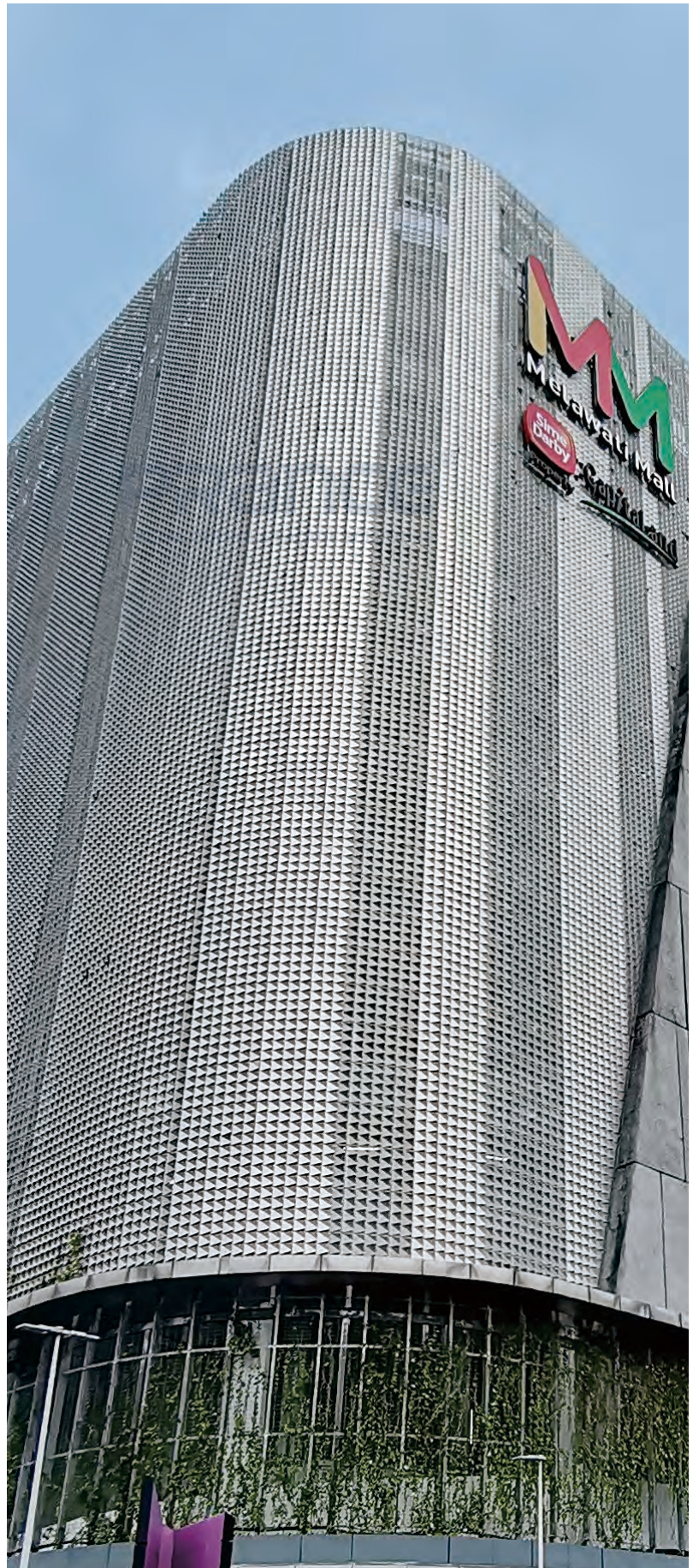
Flat Metal Panel | Decorative Perforated Metal Panels

Application Range:

Metal Facade

Services We Provide:

Design of product drawings and installation configuration drawings, feasibility assessment of project specific review drawings, product selection and production, quality inspection of products, construction follow-up, and technical support.



|| Challenge

Taking into consideration the issues related to on-site construction, including but not limited to factors such as the site environment, workforce availability, and safety measures, as well as the complexity of installation, such as the dimensions of the equipment and the intricate assembly steps required for irregularly Decorative Perforated Metal Panels. Additionally, challenges during transportation, such as road conditions and maritime transport restrictions, should be anticipated. Furthermore, comprehensive technical considerations, including compatibility with existing systems and maintenance requirements, must all be thoroughly assessed and addressed. This is to ensure the smooth progress of the project and the achievement of the intended objectives.



|| Solution

The PRANCE team made a detailed plan for the curtain wall of the project. Considering the complexity and challenges of on-site construction, PRANCE carefully formulated a detailed installation plan to deal with various problems that may arise. PRANCE also conducted in-depth research into the transportation requirements of curtain wall components, ensuring safety and efficiency during material delivery and handling. On the technical front, the PRANCE team integrated the latest advancements in construction technology and innovative solutions to ensure that the curtain wall's design and construction reach the highest standards in terms of quality and performance. This comprehensive approach is aimed at ensuring the successful completion of the project and meeting all technical and engineering requirements.

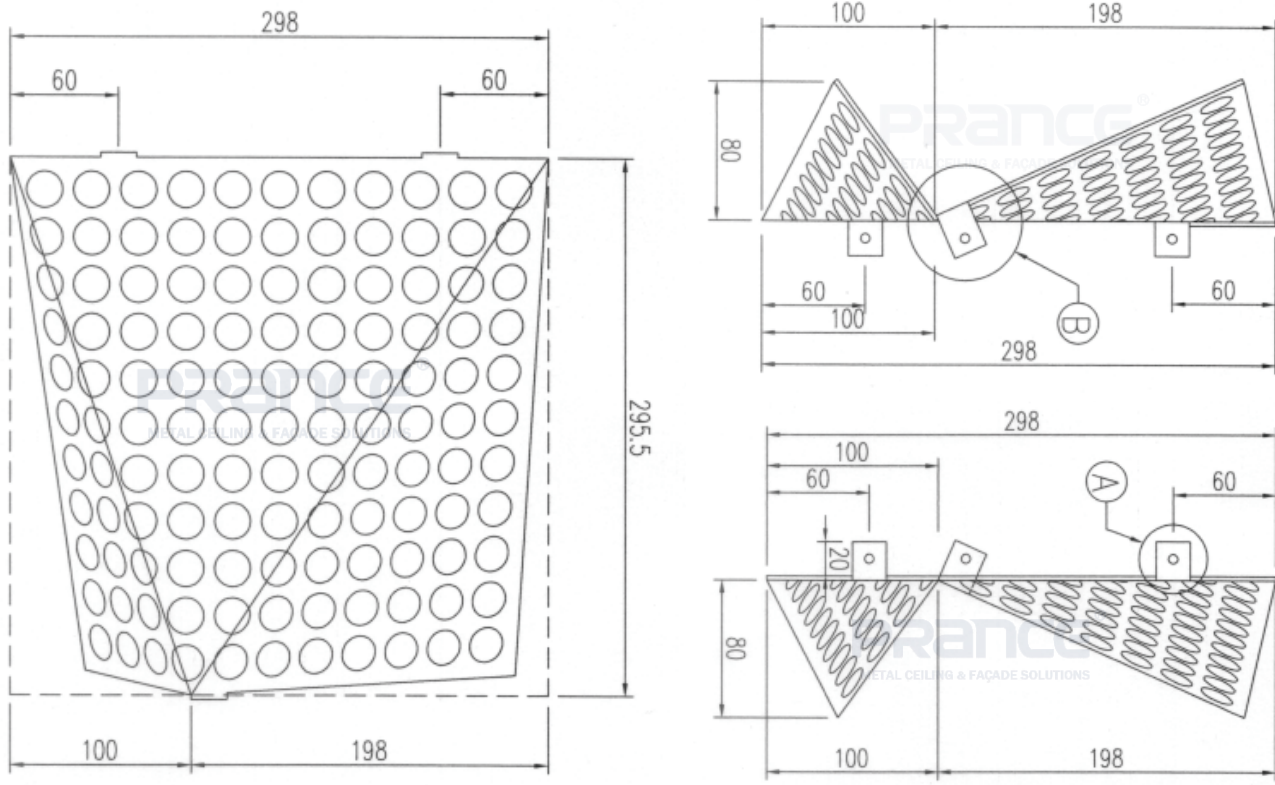
For the highly skilled and experienced PRANCE team, this project, which involves Decorative Perforated Metal Panels, has not posed much pressure apart from approaching all the requirements with a cautious and responsible attitude.

After thorough discussions during a meeting, the PRANCE professional technical team has clearly defined the material and process solutions. With a commitment to diligence, the PRANCE team has simultaneously embarked on the development of new punching molds to meet project requirements and engaged in detailed communication with local property owners and colleagues to gather precise data, preempting any unforeseen issues during the installation process. This comprehensive approach is designed to ensure the smooth execution of the project, achieving optimal results while minimizing potential risks.

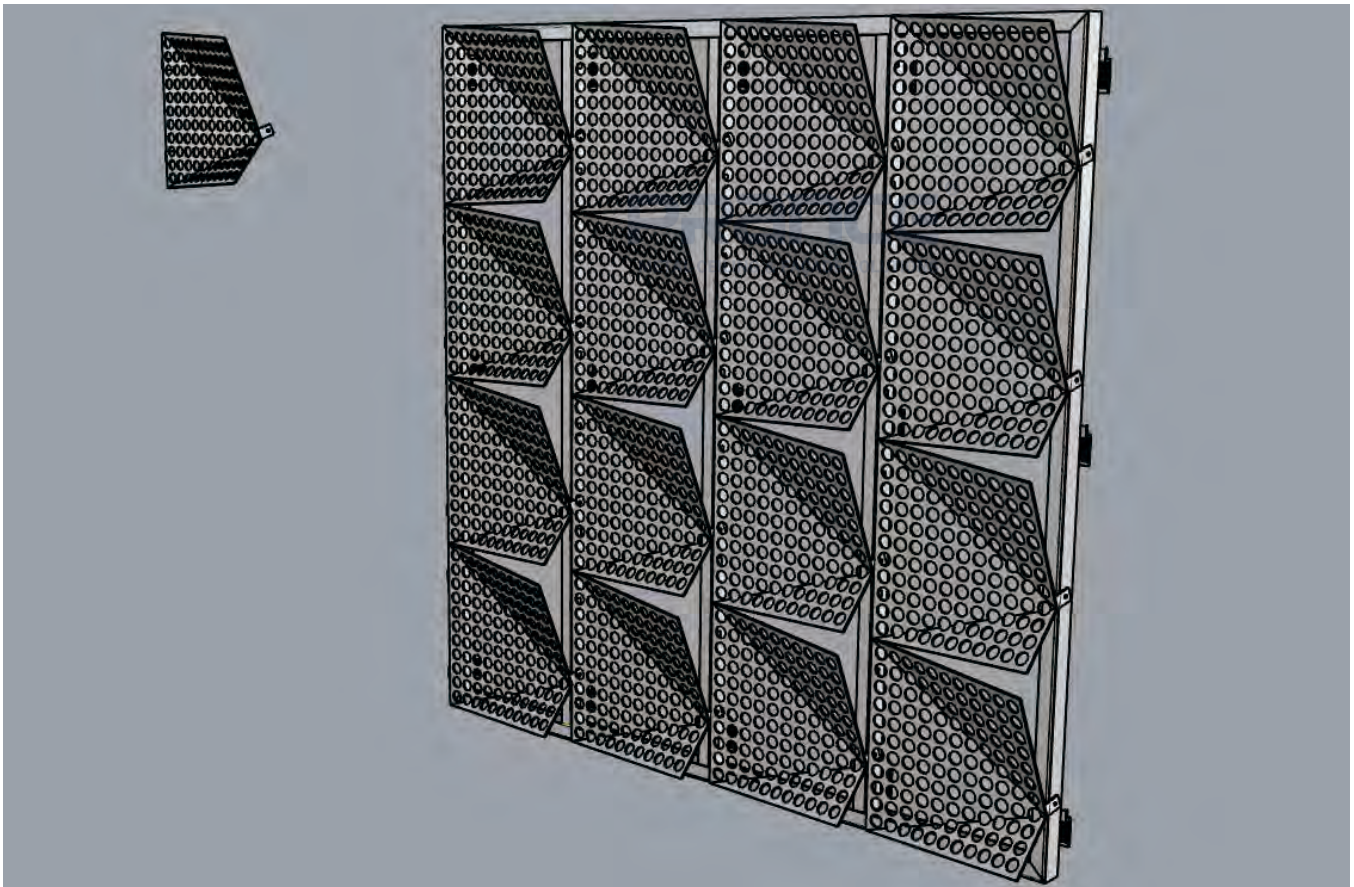


|| Product Drawings

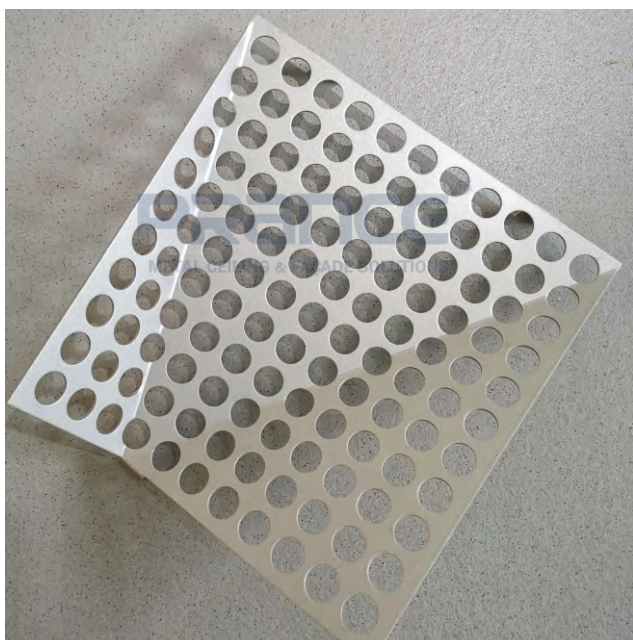
Some of the design drawings in this project can be used for presentation
Schematic diagram of exterior wall decorative perforated metal panels products



|| 3D Rendering



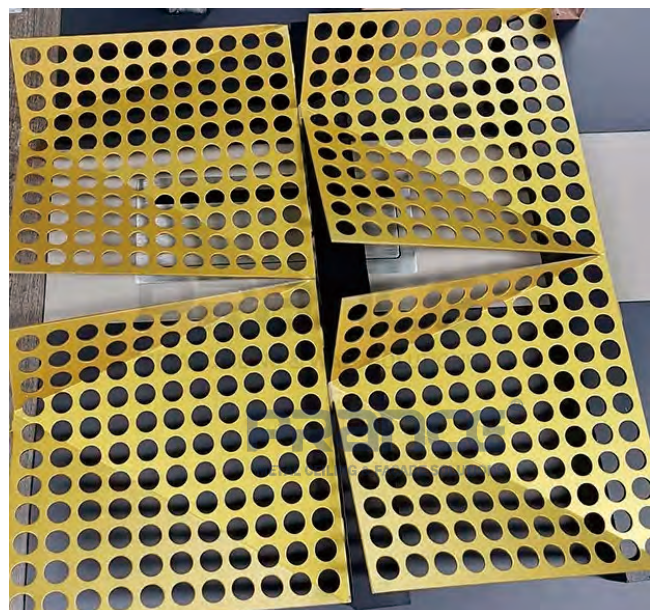
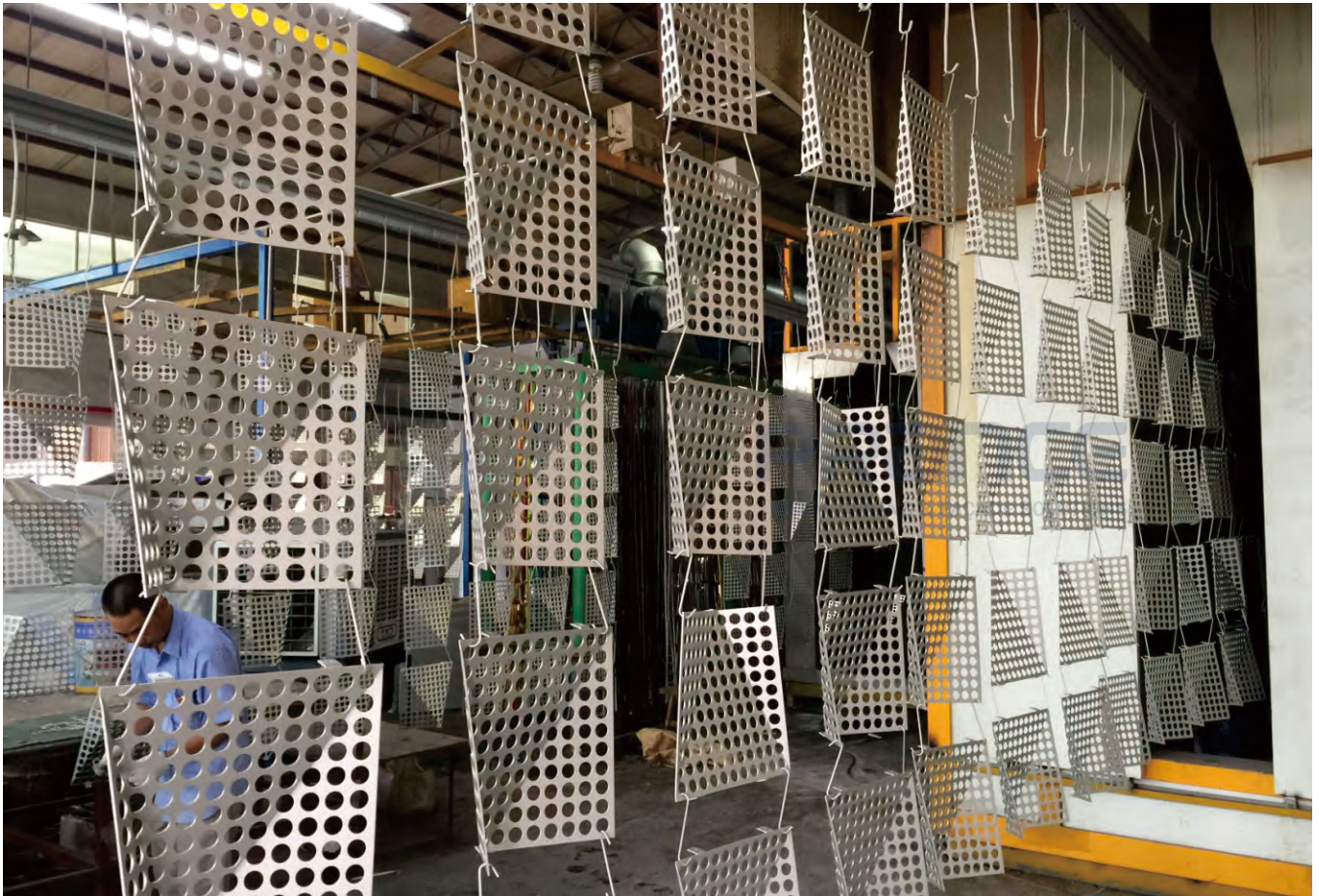
|| Product



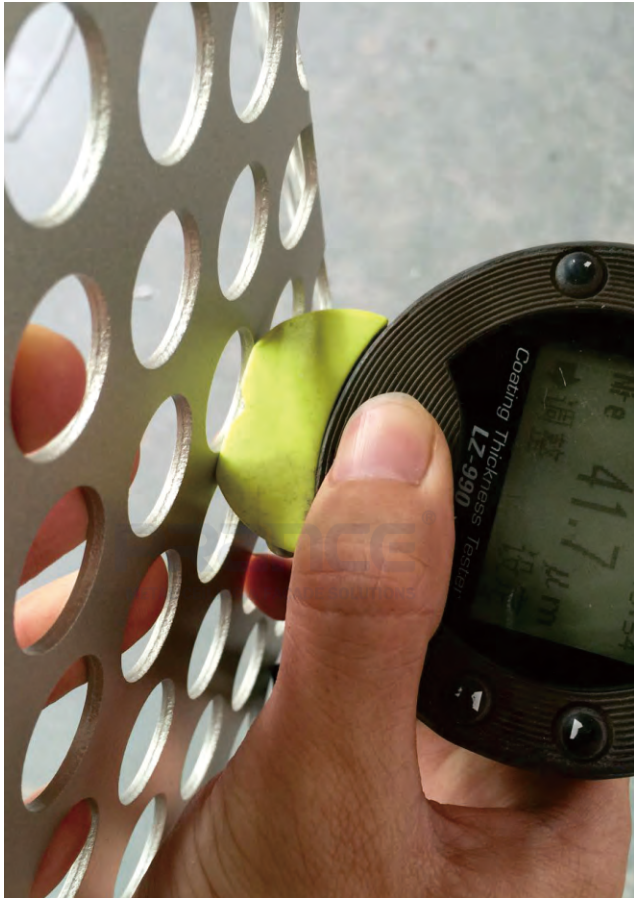
|| Product Details

PRANCE adheres to strict management throughout the manufacturing process of each panel, including cutting, punching, shaping, polishing, trial assembly, cleaning, painting, quality inspection, packaging, and transportation. This comprehensive and detailed control is aimed at achieving exceptional quality. In addition, during the project execution, PRANCE's technical experts supervise the construction site throughout, providing technical support to ensure that every step from conceptual drawings to actual installation proceeds smoothly, minimizing the risk of any unforeseen issues or oversights.

|| Production



|| The Packaging And Shipping Process



|| Actual Project Pictures




|| Actual Project Pictures





PRANCE METALWORK BUILDING MATERIAL CO.,LTD

Facebook  / LinkedIn  : Prance Metalwork Building Material

Instagram  / YouTube  / Pinterest  : prance_metalwork

Http: [//www.prancebuilding.com](http://www.prancebuilding.com) Tel: +86-757-83138155

E-Mail: info@prancebuilding.com Fax: +86-757-83139722

Office: 3F,1st Building,No.11 Gangkou Rd,Chancheng,Foshan,Guangdong.

Factory: 169, South Area, Base of Electrical and Electronic Industry,Baini, Sanshui, Foshan, Guangdong.