

# 807 N.3RD HIGH-END RESIDENTIAL APARTMENT WOOD-GRAIN FACADE PROJECT



## Product Technical Parameters & Test Report



High-quality wood-grain square channel system with a 15-year warranty, transforming your home's aesthetics into a part of nature, revitalizing its natural beauty.

### Product Features:

Profile Baffle

Size: 50\*100\*1.5mm,50\*200\*2.0mm

Color Code: P012 code 17-013/16,

P028 code 17-013/17 U-Baffle Ceiling System

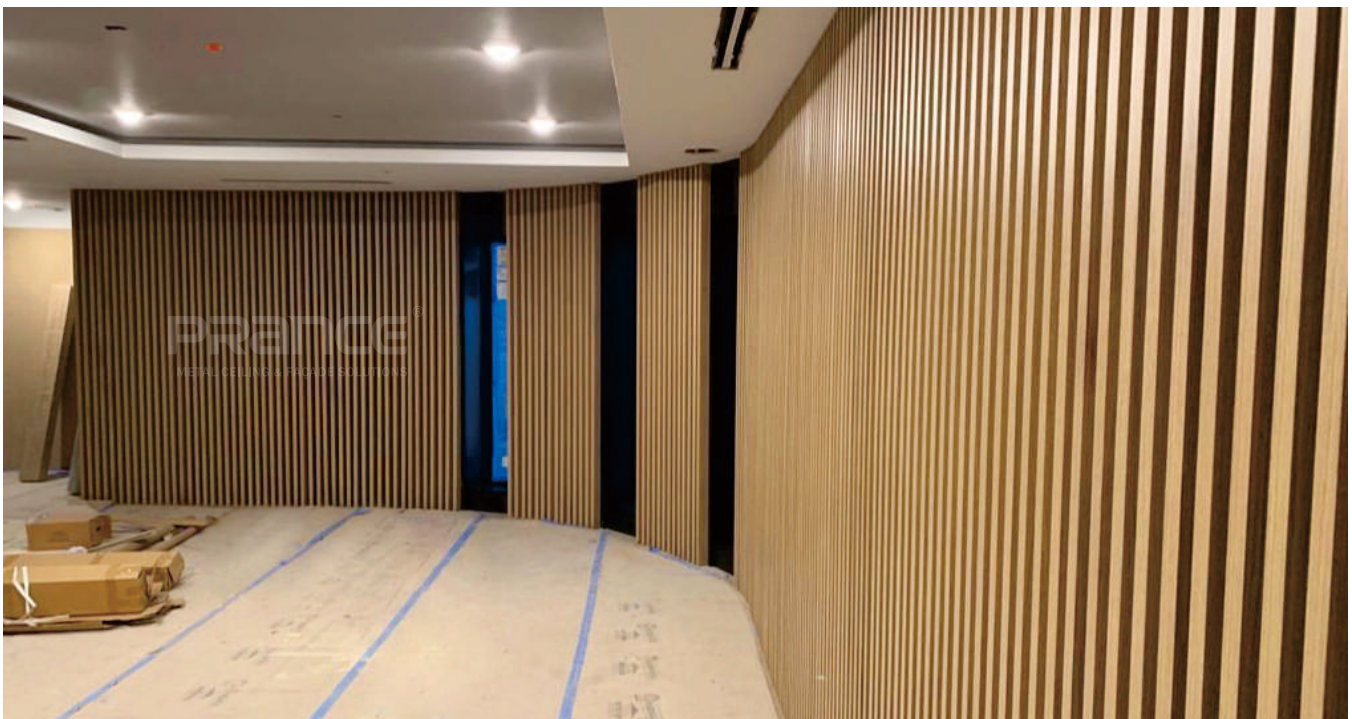
U-Baffle Ceiling System

Size: 30\*70\*0.8mm

Color Code: ME-S030

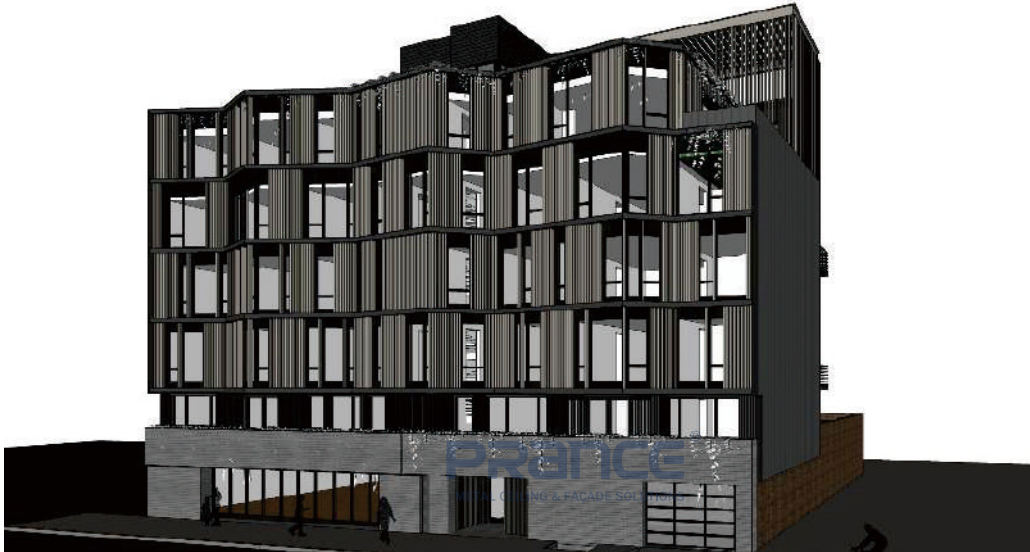
### Our Services Include:

Multiple On-Site Measurements and Verification, Blueprint Planning, 3D Model Demonstrations, Drawing Product Information, Material Selection, Processing, and Production, Technical Guidance and Support During Construction.

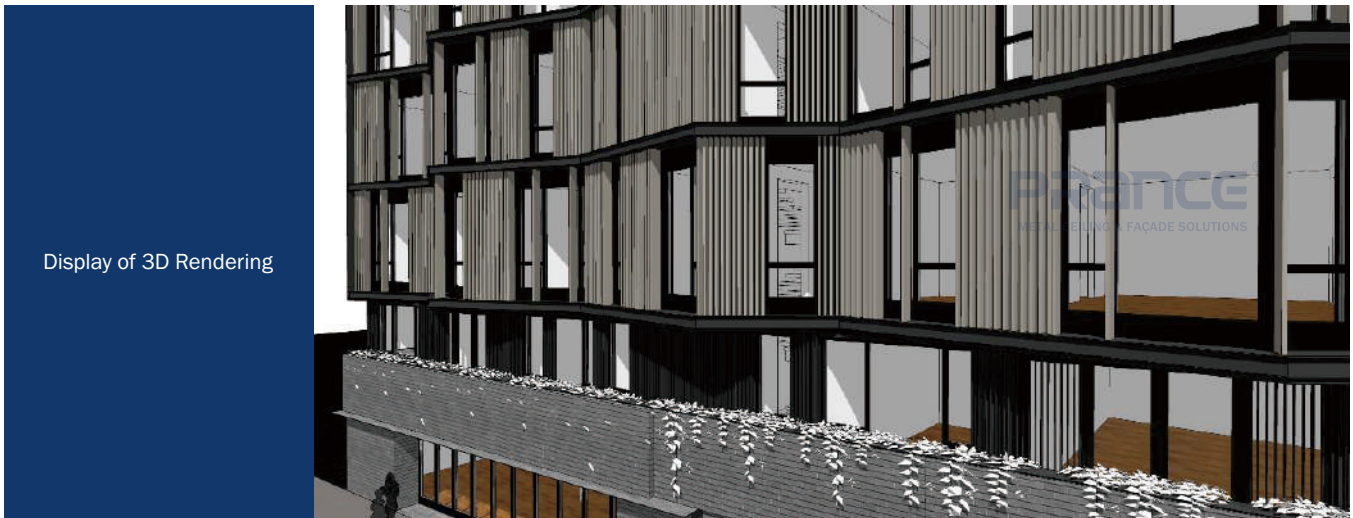


## ▶ Production Process And Technical Services

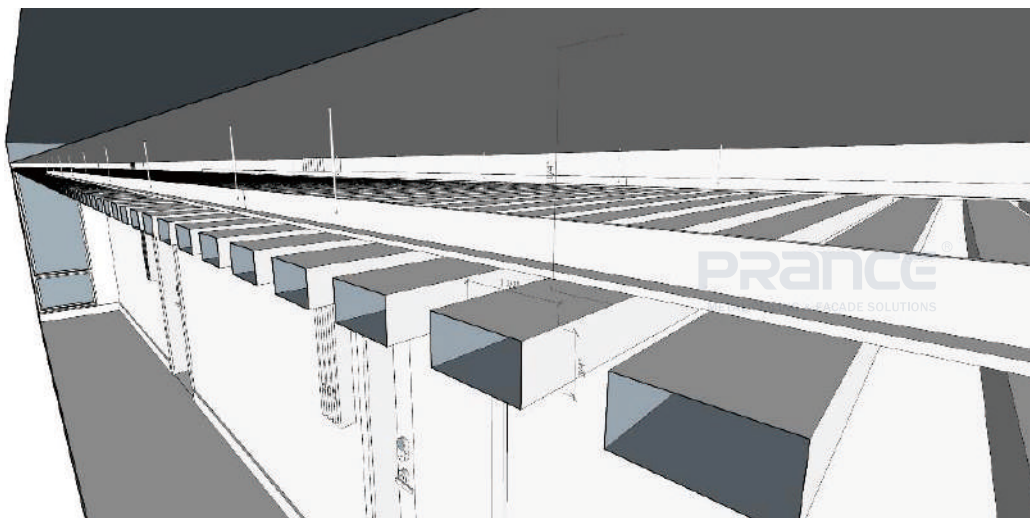
We will go through many field measurements before manufacturing, prepare drawings, and establish three-dimensional models to facilitate customers to see the actual effect. Adhere to strict processes in the product manufacturing process. The process includes careful selection and inspection of raw materials, precise production and processing, and the maximum allowable size error is 0.02mm. We strictly control the entire molding process.



Display of 3D Rendering



Display of 3D Rendering



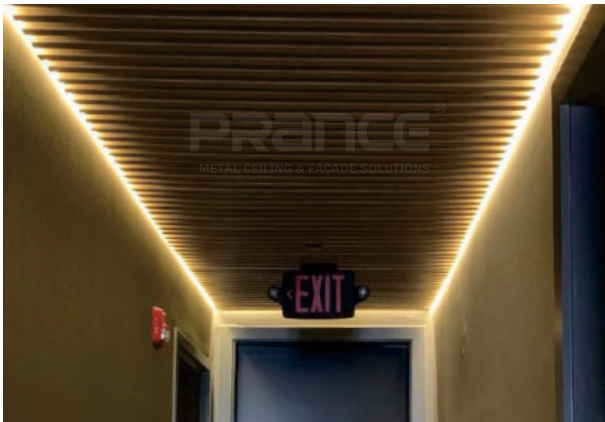
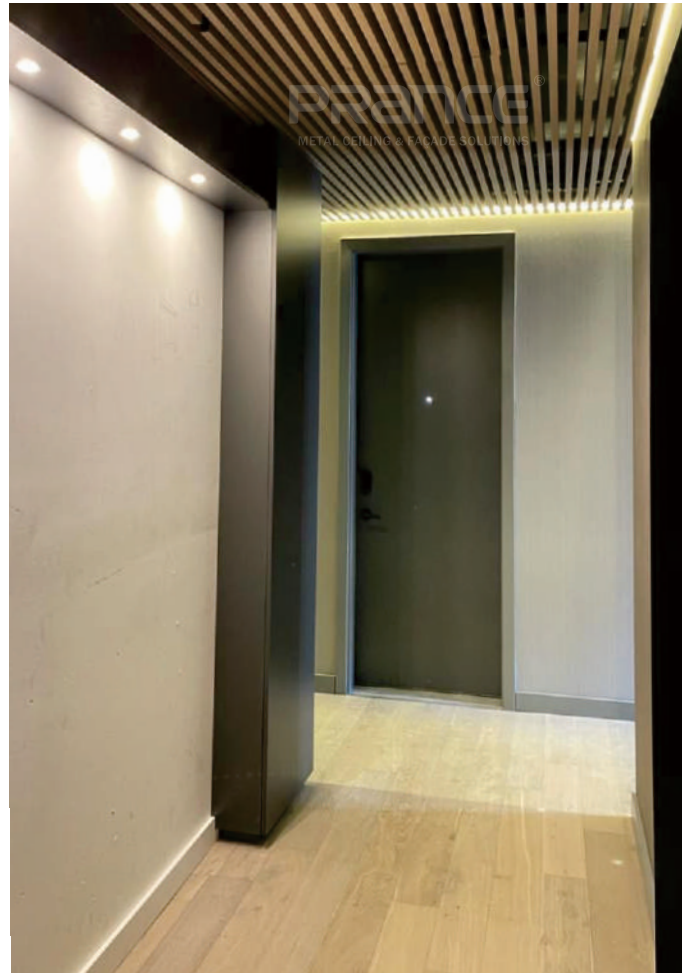
Display of 3D Rendering

## ► Challenge

The challenge for our product lies in the strict control of its quality because this project involves high-end residential buildings where the decorative materials used need to be exceptional. Therefore, we have selected wood grain from an Italian brand, coupled with Akzo's primer, which provides a 15-year outdoor warranty. We will tailor our approach according to the project requirements and the client's needs.

## ► Solution

PRANCE provides decorative aluminum square tubes for both interior and exterior applications. The surface treatment includes the use of a combination of Sublitex Italian wood grain paper and Dutch Akzo Nobel powder coating. This combination offers a unique appearance, texture, and tactile sensation, along with exceptional weather resistance, color retention, acid resistance, and oil resistance. The warranty for these products is 15 years. Material import reports and testing reports are available for the surface treatment.



## Project Certificate

Sublitex China Quality Certification Manufacturer.



## Product Packaging And Classification

We maintain strict control over the packaging and classification of our products to ensure their safety and suitability. This way, customers can efficiently install the products upon receiving them.



## ▶ Product Packaging And Classification

We focus on surface treatment to ensure the quality of spray coating, smooth surfaces, color consistency, achieve a realistic wood-like effect.

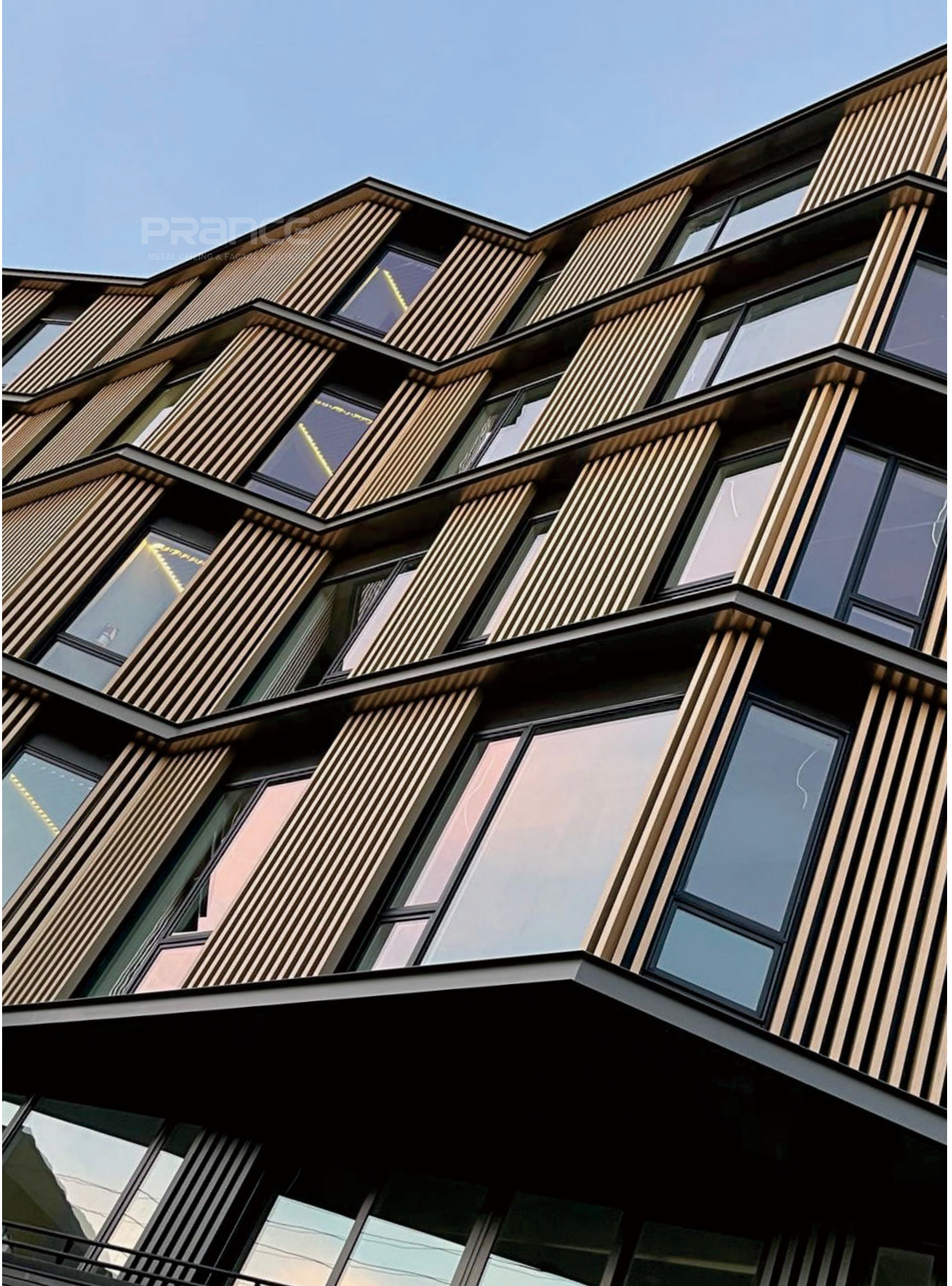


**Final Completion Effect** | Outdoor Effect

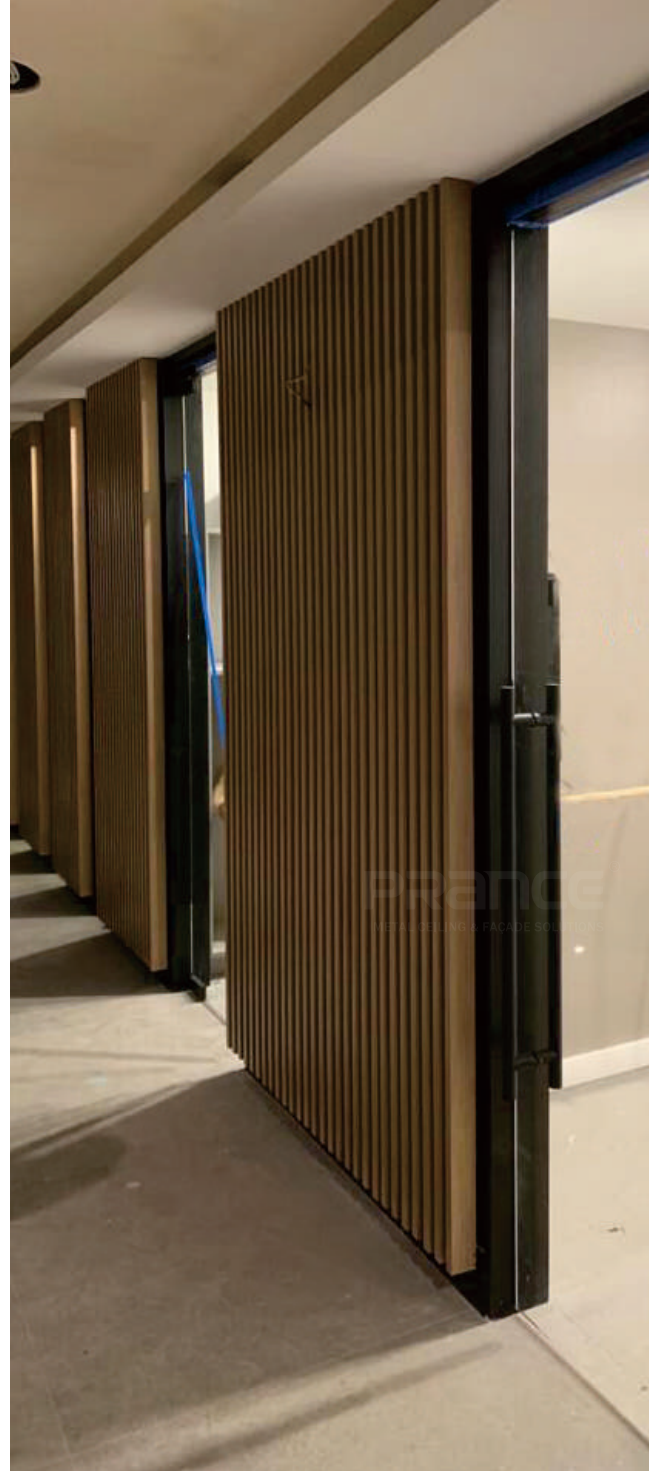




**Final Completion Effect** | Outdoor Effect





**Final Completion Effect** | Indoor Effect





**PRANCE**<sup>®</sup>  
METAL CEILING & FAÇADE SOLUTIONS

**PRANCE METALWORK BUILDING MATERIAL CO.,LTD**

Facebook  / LinkedIn  : Prance Metalwork Building Material

Instagram  / YouTube  / Pinterest  : prance\_metalwork

Http: [//www.prancebuilding.com](http://www.prancebuilding.com)

Tel: +86-757-83138155

E-Mail: [info@prancebuilding.com](mailto:info@prancebuilding.com)

Fax: +86-757-83139722

**Office:** 3F,1st Building,No.11 Gangkou Rd,Chancheng,Foshan,Guangdong.

**Factory:** 169, South Area, Base of Electrical and Electronic Industry,Baini, Sanshui, Foshan, Guangdong.