



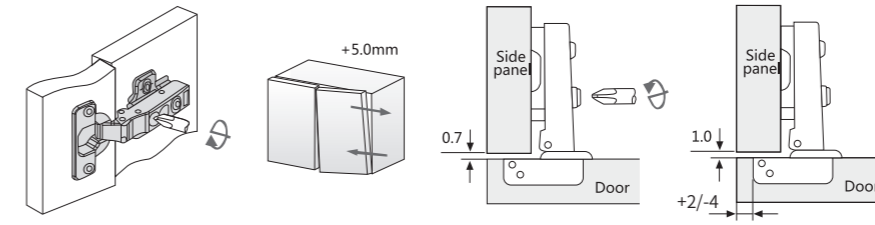
TALLSEN

CH

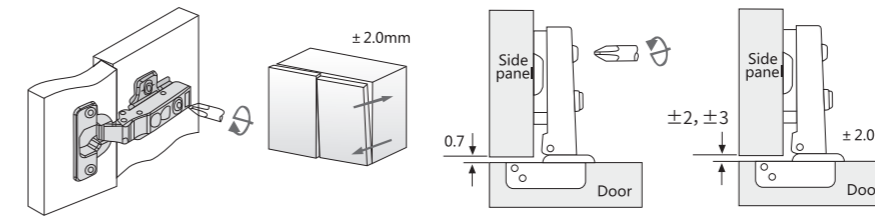
Cabinet Hinge

Hinge adjustment data

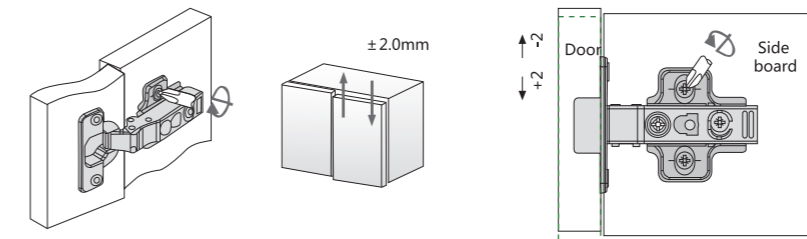
Door overlay adjustment



Depth adjustment



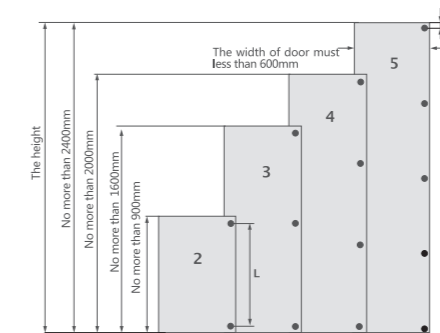
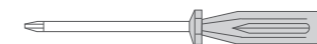
Height adjustment



Number of hinges per door

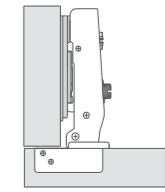
Door width, height and weight as the material quality of the door are decisive factors determining the number of hinges required. The factors encountered in each individual case in practice differ enormously. For this reason, the number of hinges shown in the diagram should only be taken as a guide. If in doubt, it is advisable to produce a trial mounting or to increase the number of hinges. For reasons of stability, distance L between the hinges must always be made as large as possible.

Install tool: screw driver

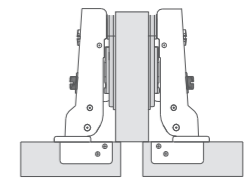


Guide values for 19mm chipboard panels with a density of 750 kg/m³

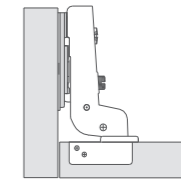
Mounting options



Full overlay doors

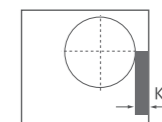


Half overlay doors



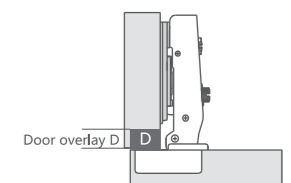
Inset doors

Cup distance K



The cup distance K is the distance between the edge of the door and the edge of cup hole. The larger the cup distance, the smaller the required minimum reveal.

Door overlay D

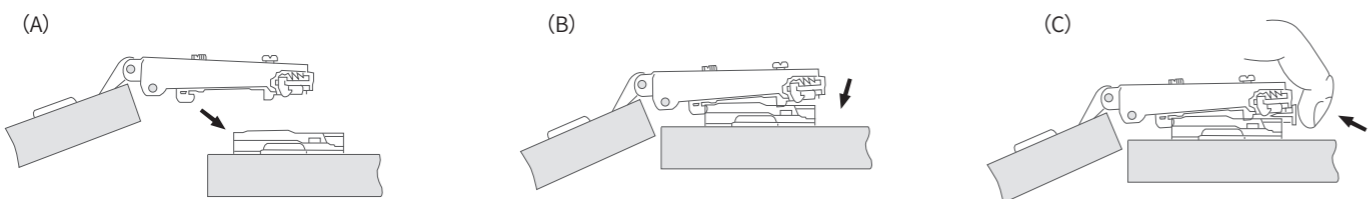


The overlay (D) is the distance by which the door projects over the side panel.



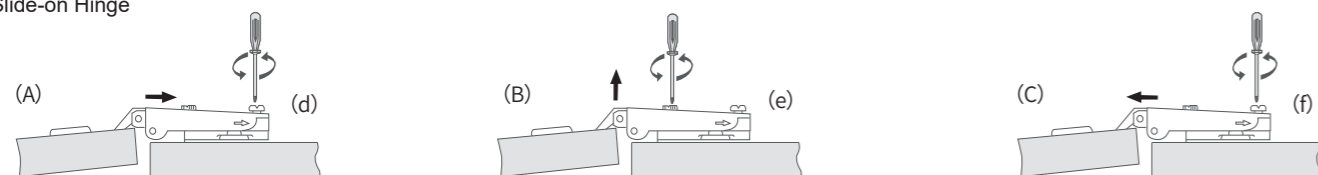
Hinge adjustment data

Clip-on Hinge



Clamp the hinge body to the hinge base shown as diagram (A), then press down slopingly the clip on button at the end of the hinge arm to lock the hinge base shown as diagram (B), so the assembling is done. Disassemble by pressing the clip-on button shown as diagram (C)

Slide-on Hinge



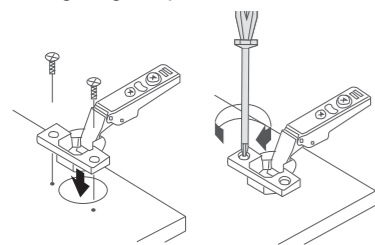
Join the hinge body to the hinge base shown as diagram(A), then tighten the locking screw(d) then adjust the height of the adjustment screw(e), then obtain the required overlay for fixing the door shown as diagram(B), so the assembling is done. Disassemble by loosening the locking screw(f)shown as diagram(C)

Inseparable Hinge

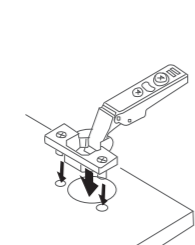


Shown as diagram(A) and (C), put the hinge with base on the door fix the hinge on the door with screw . Then the assembling us done . Disassemble it by loosening locking screws. Shown as diagram (C)

Fixing Hinge Cup

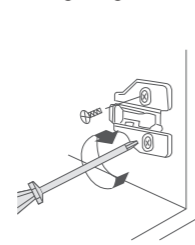


Fixing by screws
Use 2 chipboard screw to fix the hinge cup

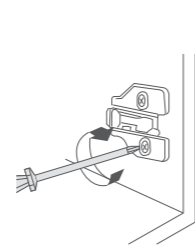


Fixing by expanding dowel
Use fixing machine to fix the dowel

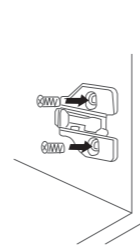
Fixing Hinge Base



By Euro-screw
Use Euro-screws to fix the base



By Euro-screw
Use Euro-screws to fix the base



By expanding dowel
Use fixing machine to fix the dowel into the hole

CONCEALED PLATE HYDRAULIC DAMPING HINGE (TWO WAY)

- Main material: cold rolled steel
- Finish: Nickel plating
- Installation: Screw fixing
- Product Features: Silent system, The built-in damper makes the door close gentle and quietly



Hydraulic soft closing	120°	48mm	35mm	11.5mm	0-5mm
-2.5mm/+2.5mm	-2mm/+2mm	3-7mm	14-21mm	H=0	100 pcs/carton



TH9819
TALLSEN



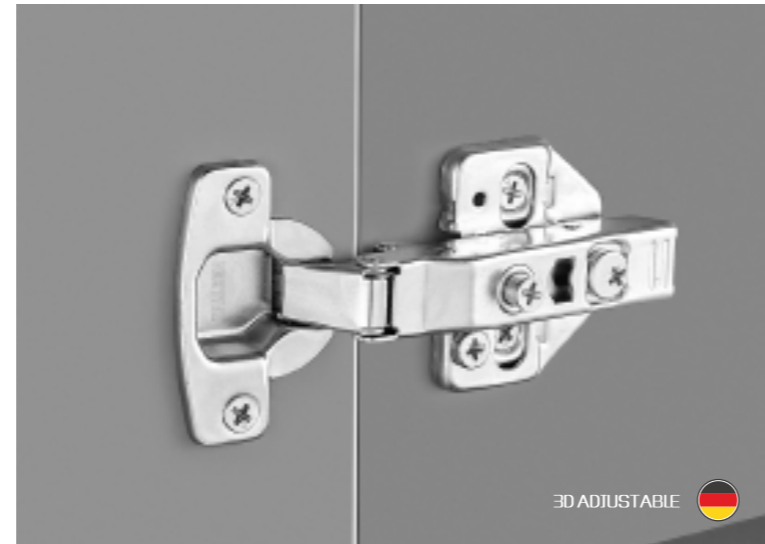
TH9818
TALLSEN



TH9817
TALLSEN

TWO-WAY HYDRAULIC DAMPING HINGE

- ▶ Main material: cold rolled steel
- ▶ Finish: Nickel plating
- ▶ Installation: Screw fixing
- ▶ Product Features: Open and stop at will, baby anti-pinch, comfortable and safe, small angle buffer



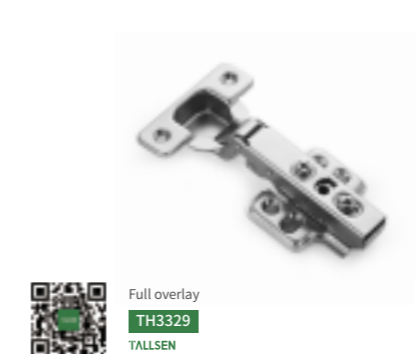
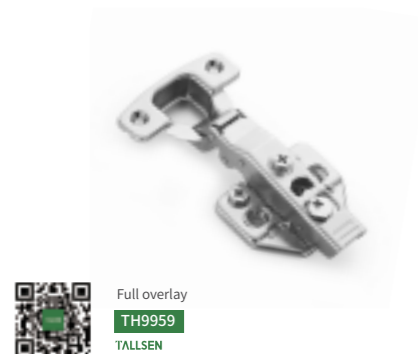
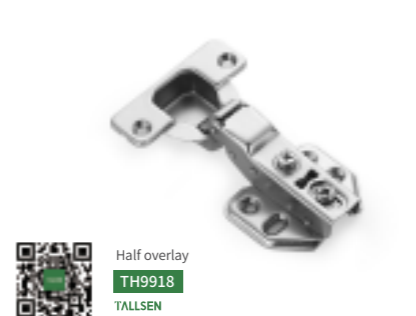
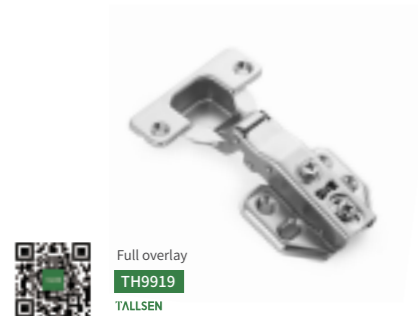
Hydraulic soft closing	110°	48mm	35mm	12mm	0-6mm
-2mm/+2mm	-2mm/+2mm	3-7mm	14-20mm	H=0	200 pcs/carton

ONE-WAY HYDRAULIC DAMPING HINGE

- ▶ Main material: cold rolled steel
- ▶ Finish: Nickel plating
- ▶ Installation: Screw fixing
- ▶ Product Features: Silent system. The built-in damper makes the door close gentle and quietly



Hydraulic soft closing	100°	48mm	35mm	11.3mm	2-5mm
-2mm/+3.5mm	-2mm/+2mm	3-7mm	14-20mm	H=0	200 pcs/carton





CLIP-ON 3D ADJUSTALBE HYDRAULIC DAMPING HINGE(ONE-WAY)

- ▶ Main material: cold rolled steel
- ▶ Finish: Nickel plating
- ▶ Installation: Screw fixing
- ▶ Product Features: Silent system, The built-in damper makes the door close gentle and quietly



Hydraulic soft closing	100°	48mm	35mm	11.3mm	0-6mm
-2mm/+2mm	-2mm/+2mm	3-7mm	15-20mm	H=0	200 pcs/carton

Full Overlay Lazy Susan Cabinet hinge



Full overlay
TH3309
TALLSEN

Half overlay
TH3308
TALLSEN

Insert
TH3307
TALLSEN

ONE-WAY HYDRAULIC DAMPING HINGE

- ▶ Main material: cold rolled steel
- ▶ Finish: Nickel plating
- ▶ Installation: Screw fixing
- ▶ Product Features: Silent system, The built-in damper makes the door close gentle and quietly



Hydraulic soft closing	100°	48mm	35mm	11.3mm	0-6mm
-3mm/+3mm	-2mm/+2mm	3-7mm	16-20mm	H=0	200 pcs/carton

Full Overlay Inseparable Cabinet Hinges



Full overlay
TH5619
TALLSEN

Half overlay
TH5618
TALLSEN

Insert
TH5617
TALLSEN

Fast Assembly Clip-on Cabinet Hinges



Full overlay
TH5629
TALLSEN

Half overlay
TH5628
TALLSEN

Insert
TH5627
TALLSEN



CLIP-ON 3D ADJUSTABLE HYDRAULIC DAMPING HINGE(ONE-WAY)

- ▶ Main material: cold rolled steel
- ▶ Finish: Nickel plating
- ▶ Installation: Screw fixing
- ▶ Product Features: Silent system, The built-in damper makes the door close gentle and quietly



Hydraulic soft closing	100°	48mm	35mm	11.3mm	0-7mm

-2mm/+2mm	-2mm/+2mm	3-7mm	14-20mm	H=0	200 pcs/carton

Kitchen Heavy Cabinet Door Hinges



Full overlay
TH5639
TALLSEN



Half overlay
TH5638
TALLSEN



Insert
TH5637
TALLSEN

STAINLESS STEEL ONE WAY HYDRAULIC DAMPING HINGE

- ▶ Main material: Stainless steel
- ▶ Finish: Stainless steel
- ▶ Installation: Screw fixing
- ▶ Product Features: built-in damper ,easy to trmove buffer closure ,super anti-rust



Hydraulic soft closing	100°	48mm	35mm	11.5mm	0-5mm
-2mm/+3.5mm	-2mm/+2mm	3-7mm	14-20mm	H=0	200 pcs/carton

Stainless Steel 100 Degree Concealed Soft Close Cabinet One Way Door Hinge



Full overlay
TH6619
TALLSEN

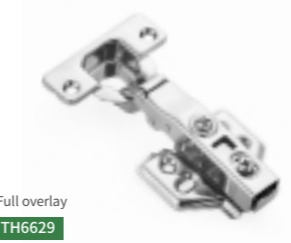


Half overlay
TH6618
TALLSEN



Insert
TH6617
TALLSEN

Clip-on Stainless Steel 100 Degree Concealed Soft Close Cabinet One Way Door Hinge



Full overlay
TH6629
TALLSEN



Half overlay
TH6628
TALLSEN



Insert
TH6627
TALLSEN



STAINLESS STEEL CLIP-ON 3D ADJUSTABLE HYDRAULIC DAMPING HINGE

- ▶ Main material: Stainless steel
- ▶ Finish: Stainless steel
- ▶ Installation: Screw fixing
- ▶ Product Features: Three-dimensional design, easy to adjust, small-angle buffer, safe and anti-pinch, open and stop at will, easy to get things



Hydraulic soft closing	100°	48mm	35mm	11.5mm	0-5mm
-2mm/+2mm	-2mm/+2mm	3-7mm	14-20mm	H=0	200 pcs/carton

The Ultimate 165° Furniture Cabinet hinge for Smooth and Strong Movements.

- ▶ Main material: cold rolled steel
- ▶ Finish: Nickel plating
- ▶ Installation: Screw fixing
- ▶ Product Features: Connect the cabinet door to open to 165°



165°	48mm	35mm	12mm	0-5mm	-2mm/+2mm

-2mm/+2mm	3-7mm	14-20mm	H=0	100 pcs/carton

Full overlay TH6649 TALLSEN	Half overlay TH6648 TALLSEN	Insert TH6647 TALLSEN
Full overlay TH6659 Two way TALLSEN	Half overlay TH6658 TALLSEN	Insert TH6657 TALLSEN

Full overlay TH1619 TALLSEN	Half overlay TH1618 TALLSEN	Insert TH1617 TALLSEN

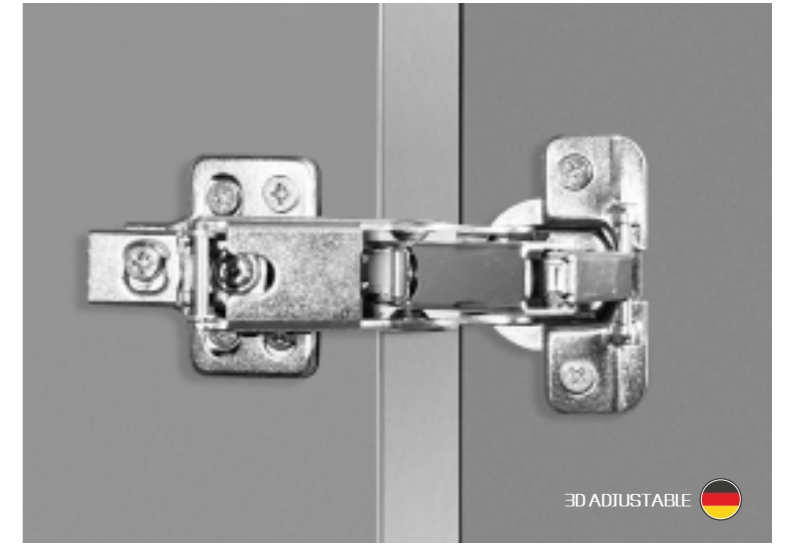
165 DEGREE CLIP-ON HYDRAULIC DAMPING HINGE

- ▶ Main material: Cold rolled steel
- ▶ Finish: Nickel plating
- ▶ Installation: Screw fixing
- ▶ Product features: Connect the cabinet door to open to 165°, soft closing



165 DEGREE 3D ADJUSTABLE HYDRAULIC DAMPING HINGE

- ▶ Main material: Cold rolled steel
- ▶ Finish: Nickel plating
- ▶ Installation: Screw fixing
- ▶ Product features: Connect the cabinet door to open to 165°, soft closing



Hydraulic soft closing	165°	48mm	35mm	12mm	0-5mm
-2mm/+2mm	-2mm/+2mm	3-7mm	14-20mm	H=0	100 pcs/carton

Effortlessly Close Cabinet Doors at 165°



Full overlay
TH1649
TALLSEN



Half overlay
TH1648
TALLSEN



Insert
TH1647
TALLSEN

Hydraulic soft closing	165°	48mm	35mm	12mm	0-5mm
-2mm/+2mm	-2mm/+2mm	3-7mm	14-20mm	H=0	100 pcs/carton

165°damping 3d cabinet hinge



Full overlay
TH1659
TALLSEN



Half overlay
TH1658
TALLSEN



Insert
TH1657
TALLSEN

CABINET HINGE

www.tallsen.com



135 DEGREE SLIDE-ON HINGE

- ▶ Main material: cold rolled steel
- ▶ Finish: Nickel plating
- ▶ Installation: Screw fixing
- ▶ Product Features: Connect the angled cabinet door to open to 135°



90 DEGREE HINGE

- ▶ Main material: cold rolled steel
- ▶ Finish: Nickel plating
- ▶ Installation: Screw fixing
- ▶ Product Features: Connect the angled cabinet door to open to 90°



135°	48mm	35mm	11.5mm	0-5mm	-2mm/+3.5mm

-2mm/+2mm	3-7mm	14-20mm	H=0	200 pcs/carton

Hydraulic soft closing	90°	48mm	35mm	11.5mm	0-6mm

-2mm/+3.5mm	-2mm/+2mm	3-7mm	14-20mm	H=0	200 pcs/carton



SLIDE-ON
TH5135
TALLSEN



SLIDE-ON
TH5090
TALLSEN



INSEPERABLE
TH5190
TALLSEN



CLIP-ON
TH5290
TALLSEN

45 DEGREE HINGE

- ▶ Main material: cold rolled steel
- ▶ Finish: Nickel plating
- ▶ Installation: Screw fixing
- ▶ Product Features: Connect the angled cabinet door to open to 45°



TWO WAY SLIDE-ON HINGE

- ▶ Main material: cold rolled steel
- ▶ Finish: Nickel plating
- ▶ Installation: Screw fixing
- ▶ Product Features: Connect the cabinet door, mute closed



Hydraulic soft closing	45°	48mm	35mm	11.5mm	0-6mm
-2mm/+3.5mm	-2mm/+2mm	3-7mm	14-20mm	H=0	200 pcs/carton

110°	48mm	35mm	11.3mm	0-6mm	-2mm/+3.5mm
-2mm/+2mm	3-7mm	14-20mm	H=0	200 pcs/carton	



SLIDE-ON
TH5045
TALLSEN



INSEPERABLE
TH5145
TALLSEN



CLIP-ON
TH5245
TALLSEN



Full overlay
TH2069
TALLSEN



Half overlay
TH2068
TALLSEN



Insert
TH2067
TALLSEN

ONE-WAY INSEPERABLE HINGE

- ▶ Main material: cold rolled steel
- ▶ Finish: Nickel plating
- ▶ Installation: Screw fixing
- ▶ Product Features: Connect the cabinet door, mute closed



105°	48mm	35mm	11.3mm	0-6mm	-2mm/+3.5mm

-2mm/+2mm	3-7mm	14-20mm	H=0	200 pcs/carton

Flush Mount Cabinet Door Hinges



Full overlay
TH1019
TALLSEN



Half overlay
TH1018
TALLSEN



Insert
TH1017
TALLSEN

40MM CUP HYDRAULIC DAMPING HINGE

- ▶ Main material: cold rolled steel
- ▶ Finish: Nickel plating
- ▶ Installation: Screw fixing
- ▶ Product Features: Suitable for thick door panels, quiet soft closing



Hydraulic soft closing	100°	52mm	40mm	12.5mm	0-5mm
-2mm/+3mm	-2mm/+2mm	3-9mm	16-27mm	H=0	200 pcs/carton

Tallsen 40mm cup clip-on hydraulic hinge



Full overlay
TH4029
TALLSEN



Half overlay
TH4028
TALLSEN



Insert
TH4027
TALLSEN



Full overlay
TH4039
TALLSEN



Half overlay
TH4038
TALLSEN



Insert
TH4037
TALLSEN

26MM CUP HYDRAULIC DAMPING HINGE

- ▶ Main material: cold rolled steel
- ▶ Finish: Nickel plating
- ▶ Installation: Screw fixing
- ▶ Product Features: Silent system, The built-in damper makes the door close gentle and quietly



26MM CUP GLASS DOOR HYDRAULIC DAMPING HINGE

- ▶ Main material: Cold rolled steel + plastic
- ▶ Finish: Nickel plating
- ▶ Installation: Screw fixing
- ▶ Product Features: Silent system, built-in damper makes the glass door close softly and quietly



Hydraulic soft closing	95°	38mm	26mm	10mm	0-4mm
-2mm/+2.5mm	-2mm/+2mm	3-7mm	12-18mm	H=0	100 pcs/carton

26mm Small Cabinet Hinges



Tallsen 26mm cup hydraulic clip-on hinge Cabinet hinge



Hydraulic soft closing	95°	26mm	10.6mm	0-5mm	-2mm/+3.5mm
-2mm/+2mm	3-7mm	4-6mm	H=0	100 pcs/carton	

Glass Door Cold Rolled Steel Cabinet Hinges



26mm Cup Glass Door Hydraulic Clip-On Hinge



CABINET HINGE

www.tallsen.com



INSEPERABLE ALUMINUM FRAME HYDRAULIC DAMPING HINGE

- ▶ Main material: Cold rolled steel + zinc alloy
- ▶ Finish: Agate black
- ▶ Installation: Screw fixing
- ▶ Product Features: Suitable for aluminum frame doors, soft closing



AIR HINGE

- ▶ Main material: Zinc alloy
- ▶ Finish: Gun black
- ▶ Installation: Screw fixing
- ▶ Product Features: Silent system, The built-in damper makes the aluminum door close gentle and quietly



Hydraulic soft closing	100°	28mm	19-24mm	11mm	0-6mm

-4mm/+4mm	-2mm/+2mm	3-7mm	14-20mm	H=0	200 pcs/carton

Hydraulic soft closing	105°	1 set/inner box 20 sets/carton

Antique Finish Adjustable Cabinet Hinges



Full overlay
TH8839
TALLSEN



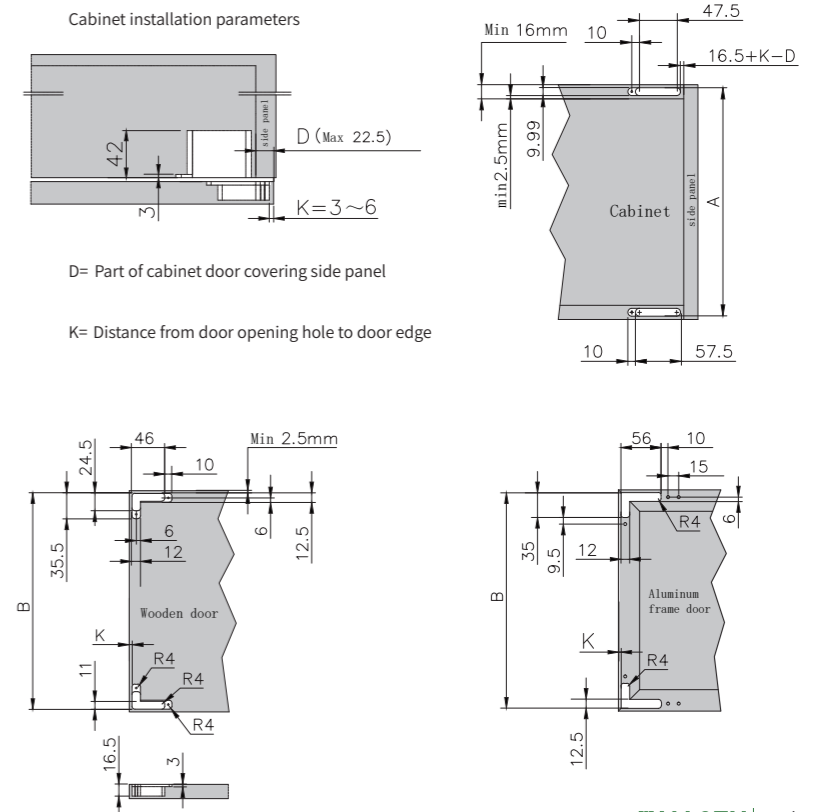
Half overlay
TH8838
TALLSEN



Insert
TH8837
TALLSEN



AIR HINGE
T5110
TALLSEN



HYDRAULIC DAMPING CAR HINGE

- ▶ Main material: cold rolled steel
- ▶ Finish: Nickel plating
- ▶ Installation: copper plating+ nickel
- ▶ Product Features: Silent system. The built-in damper makes the door close gentle and quietly



170 DEGREE ANGLE HINGE

- ▶ Main material: cold rolled steel
- ▶ Finish: Cooper plating + Nickel
- ▶ Installation: Screw fixing
- ▶ Product Features: Silent system. The built-in damper makes the door close gentle and quietly



Hydraulic soft closing	100° /90°	13-20mm	-2mm/+2mm	-2mm/+2mm	200 pcs/carton

135°-170°	-2mm/+2mm	-2mm/+2mm	10-30mm	100 pcs/carton

Revolutionary 170 Degree Angle Hinge



Normal
TH6050
TALLSEN



Double spring
TH6080
TALLSEN



170°hinge
TH6100
TALLSEN

TALLSEN

 Deutsche Qualität **Nr. 30 2021 100 599**