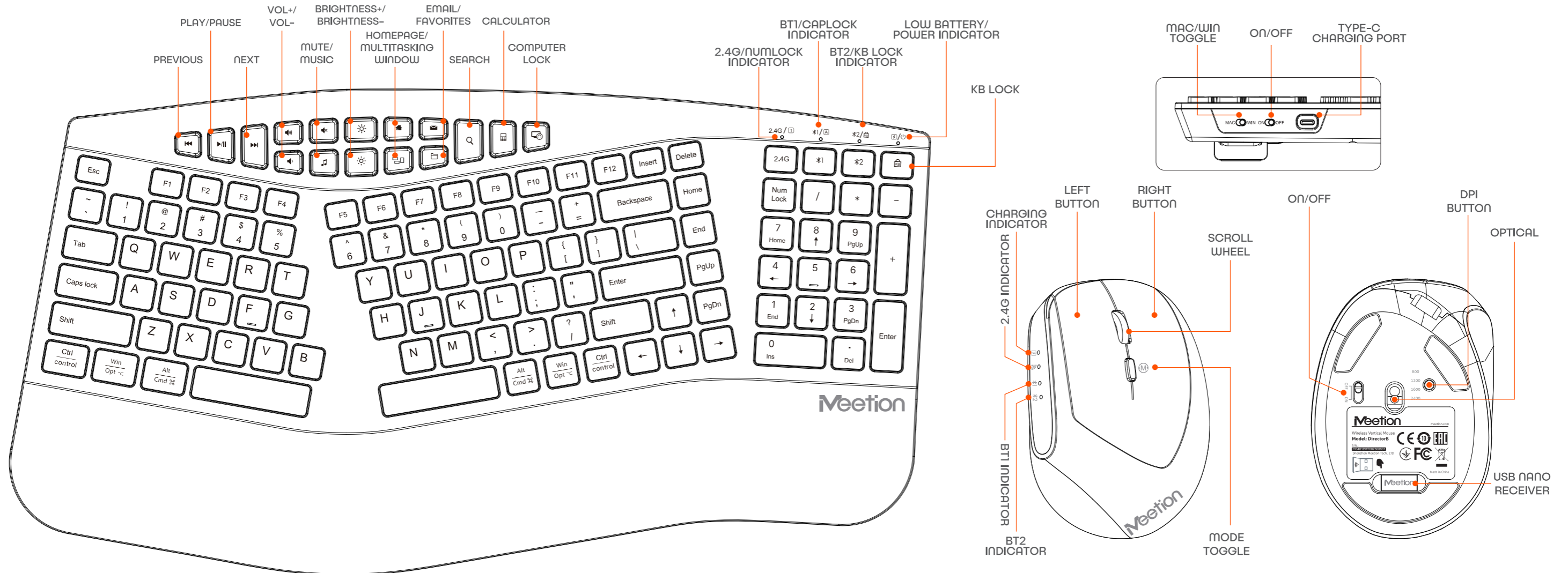
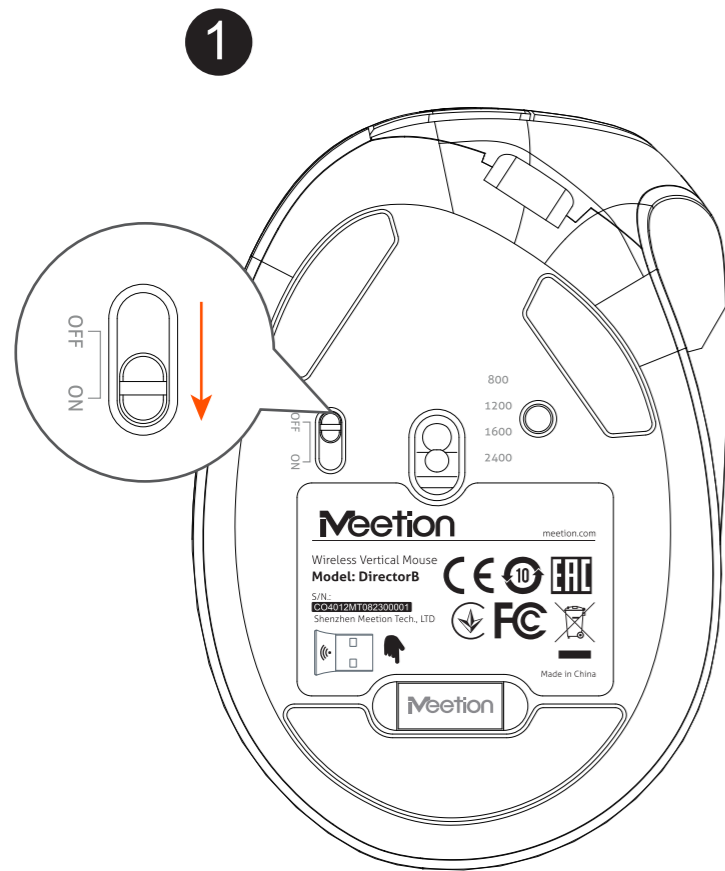


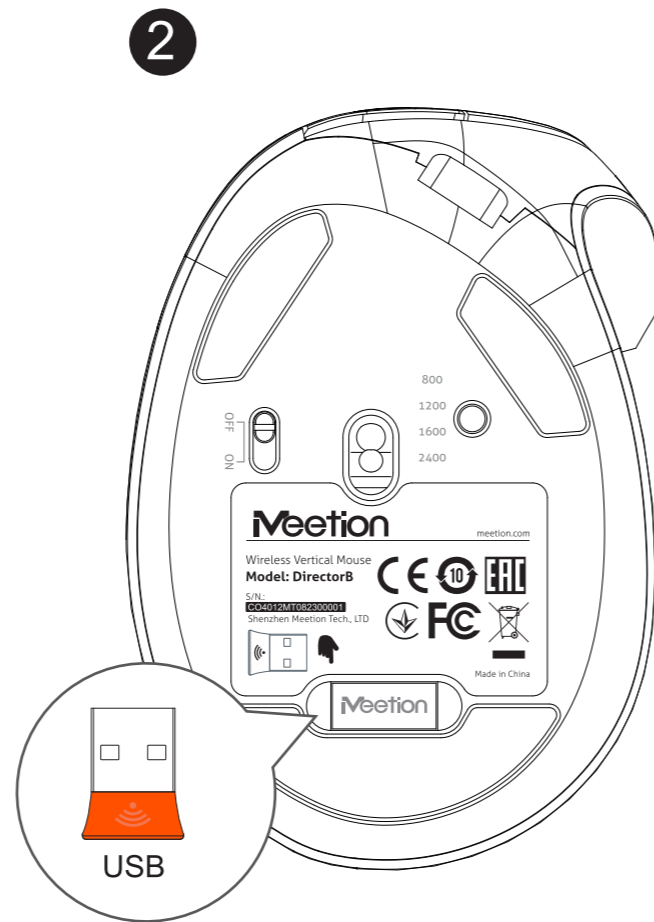
MULTIMEDIA FUNCTION KEYS



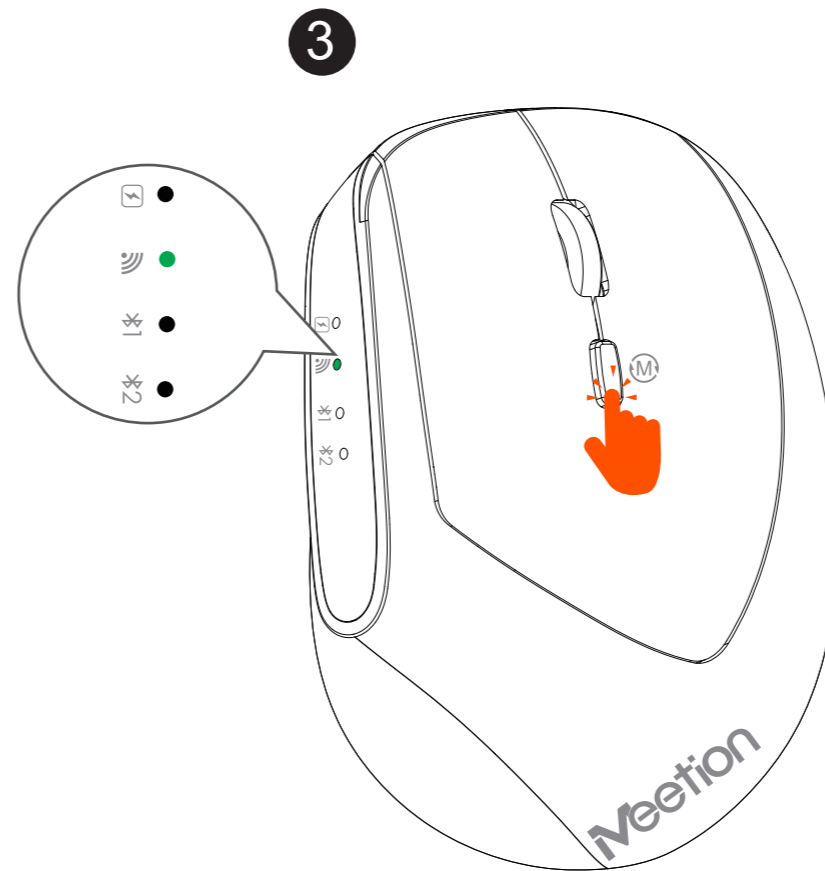
2.4G CONNECTION(MOUSE)



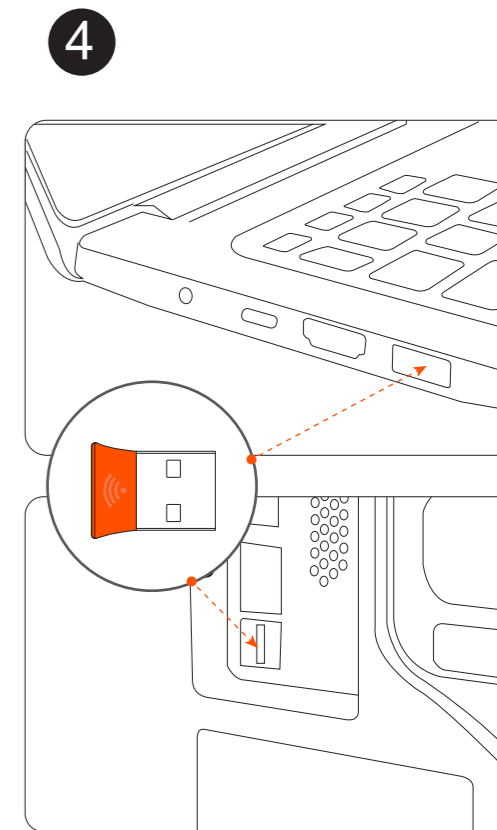
Turn on the mouse power switch



Remove the USB receiver at the bottom of the mouse

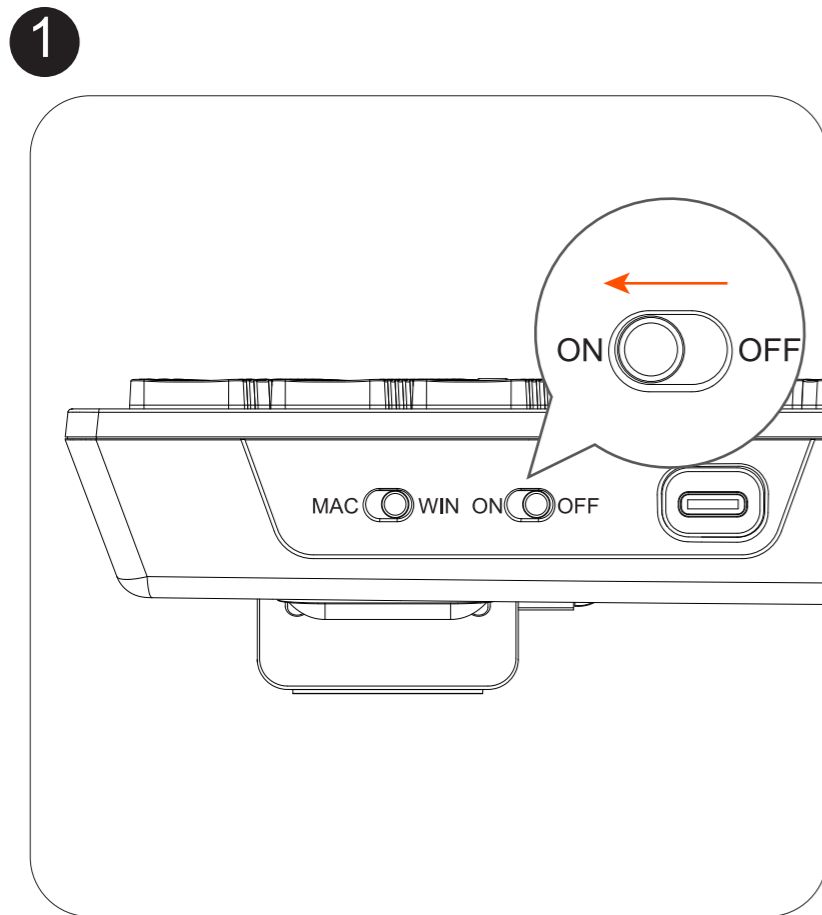


Press the mode switch button to switch to 2.4G mode, and the light is green



Insert computer USB interface
(When the product is used for the first time, an automatic hardware installation prompt will pop up in the lower right corner of the computer)

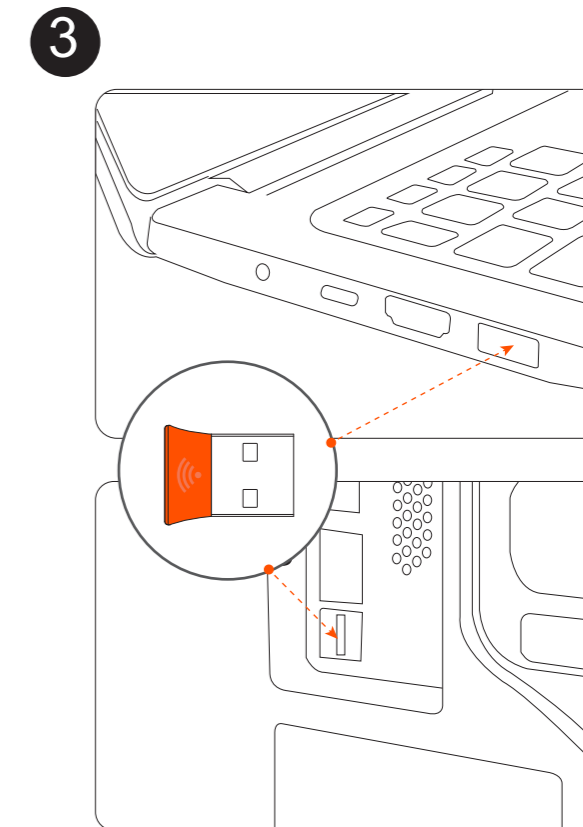
2.4G CONNECTION(KEYBOARD)



Turn on the keyboard power switch



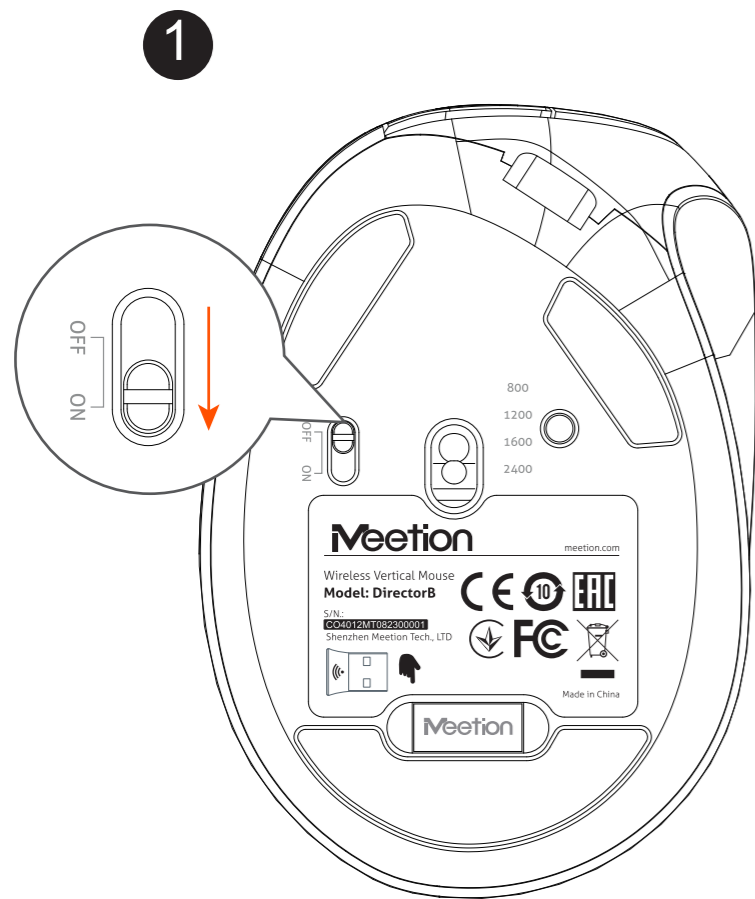
Tap here to enter 2.4G mode



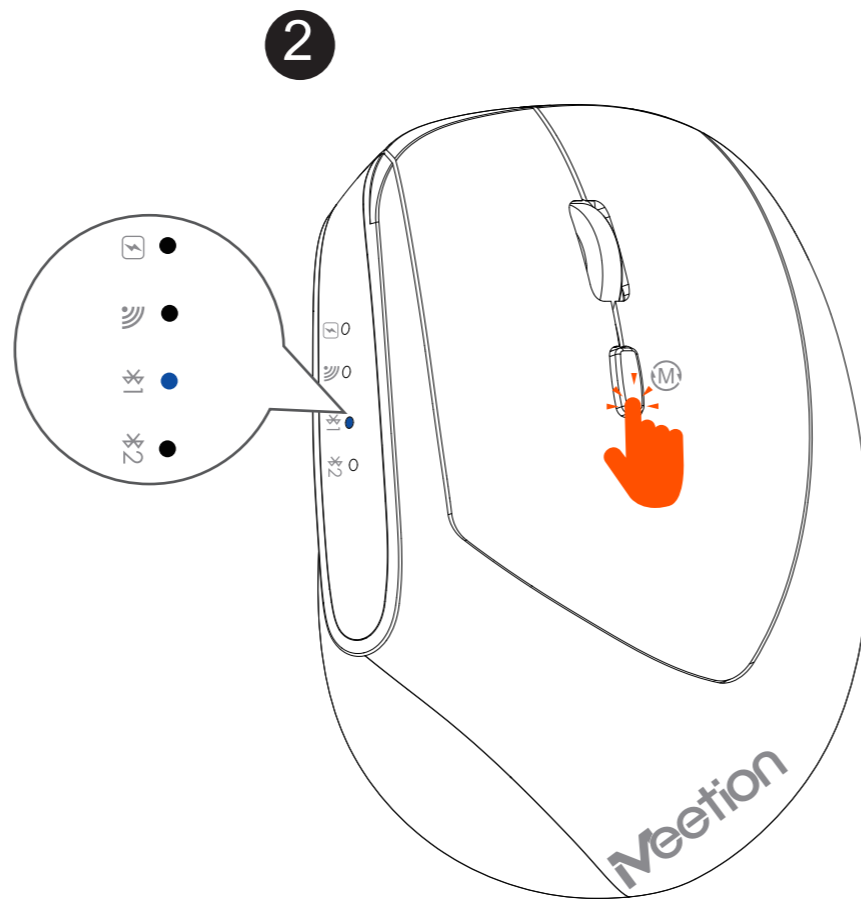
Insert computer USB interface

(When the product is used for the first time, an automatic hardware installation prompt will pop up in the lower right corner of the computer)

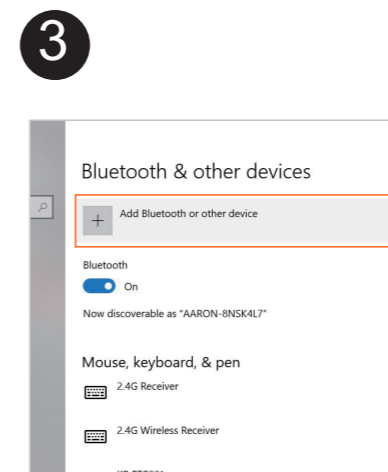
BLUETOOTH CONNECTION(MOUSE) 1



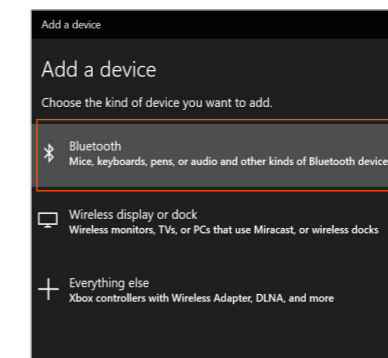
Turn on the mouse power switch



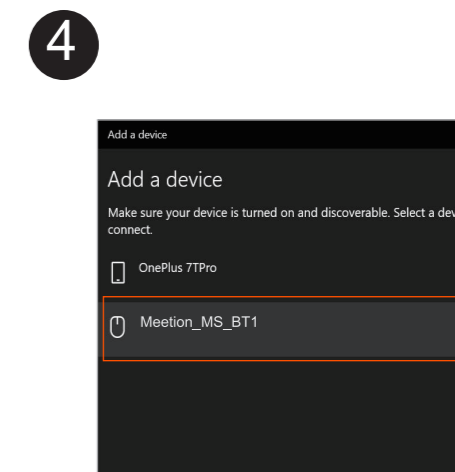
Short press the mode switch button, switch to Bluetooth 1, then the blue light flashes you can perform code matching



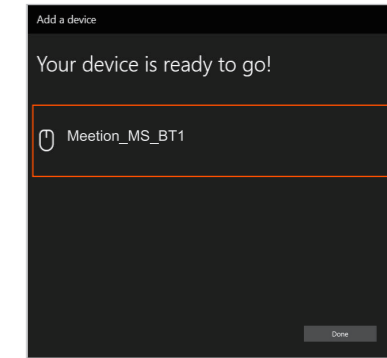
Turn on the computer Bluetooth switch to enter the Bluetooth settings page



Click to add Bluetooth or other devices, click to add Bluetooth mouse, keyboard, and other devices

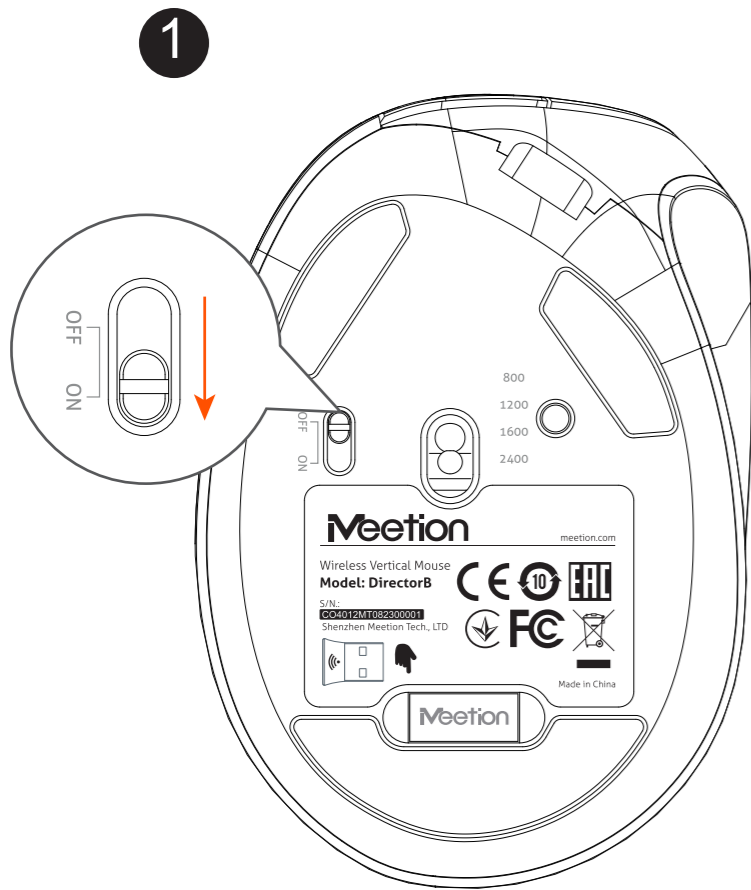


Find the device named Meetion_MS_BT1 and click on Add Pairing

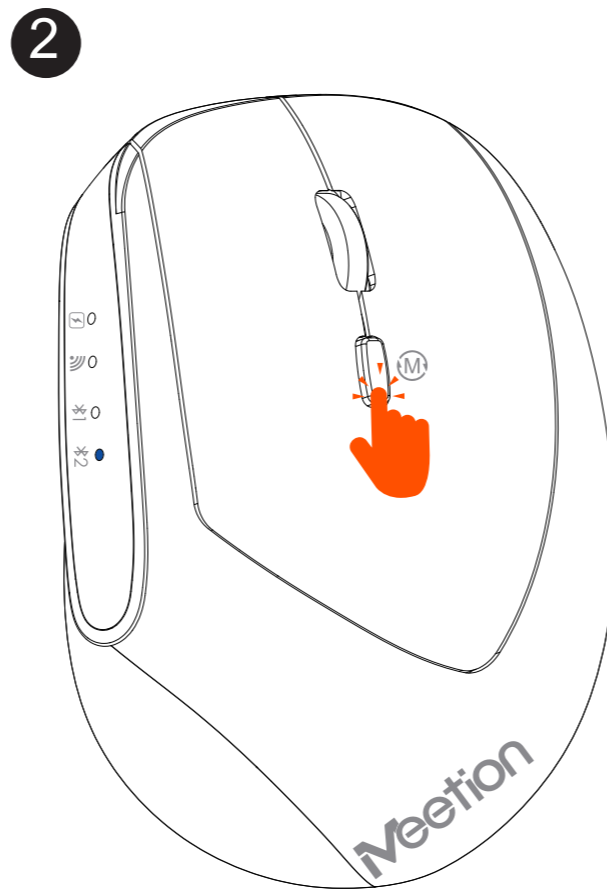


Paired successfully

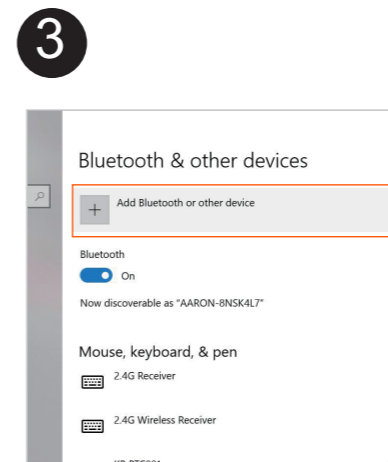
BLUETOOTH CONNECTION(MOUSE) 2



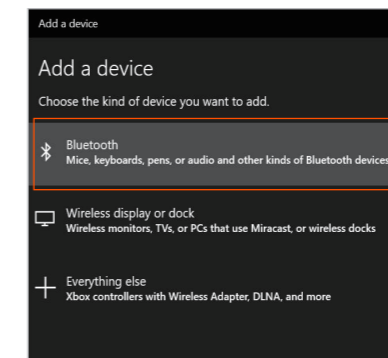
Turn on the mouse power switch



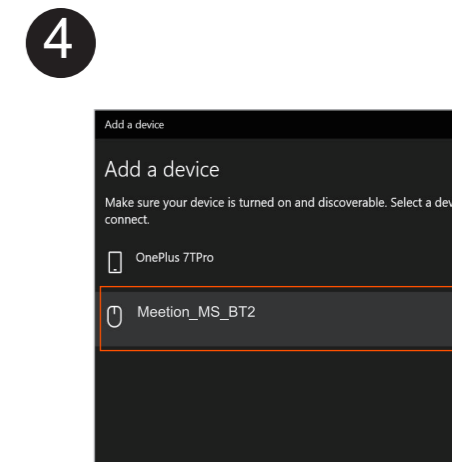
Short press the mode switch button, switch to Bluetooth 2, then the blue light flashes you can perform code matching



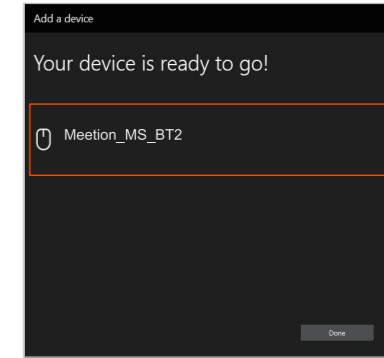
Turn on the computer Bluetooth switch to enter the Bluetooth settings page



Click to add Bluetooth or other devices, click to add Bluetooth mouse, keyboard, and other devices



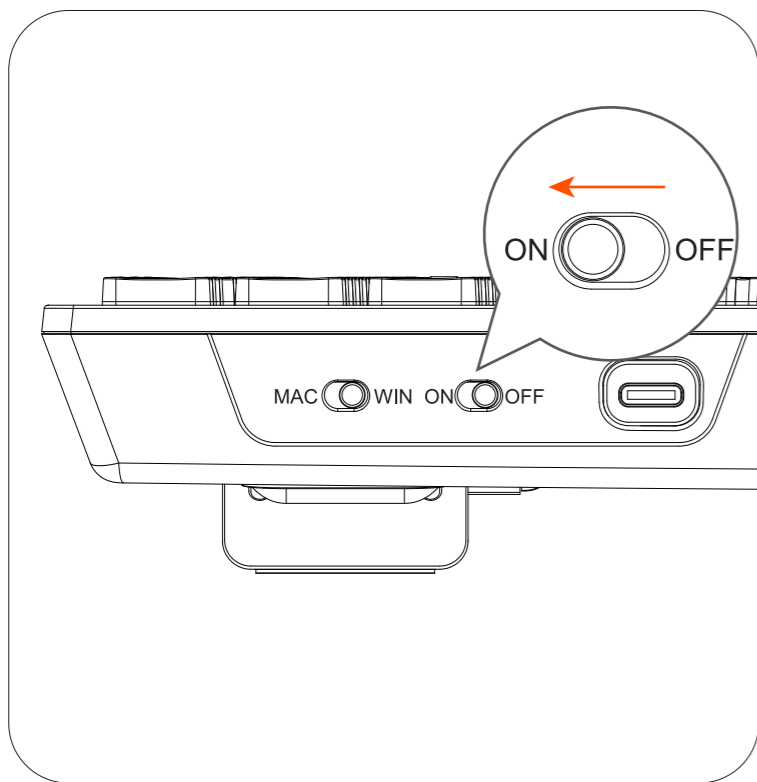
Find the device named Meetion_MS_BT2 and click on Add Pairing



Paired successfully

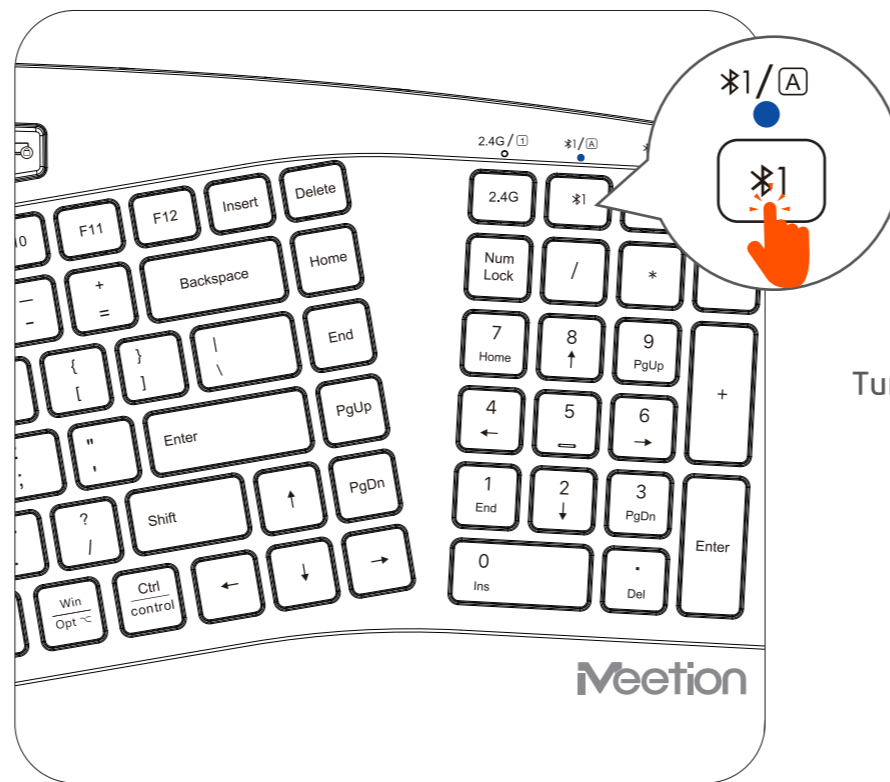
BLUETOOTH CONNECTION(KEYBOARD) 1

1



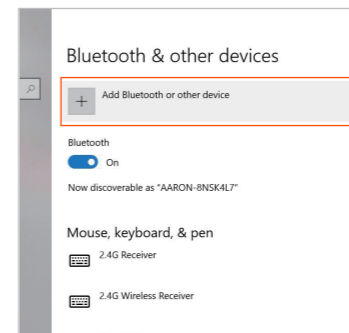
Turn on the keyboard power switch

2

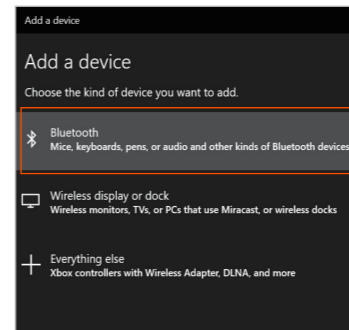


Click here to enter Bluetooth 1 mode pairing, blue light flashing

3

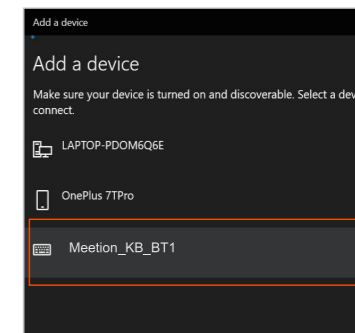


Turn on the computer Bluetooth switch to enter the Bluetooth settings page

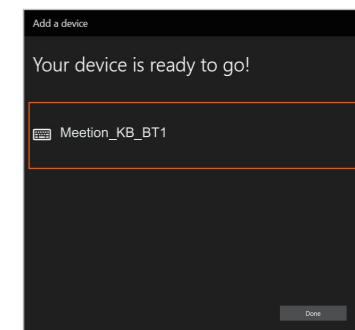


Click to add Bluetooth or other devices, click to add Bluetooth mouse, keyboard, and other devices

4



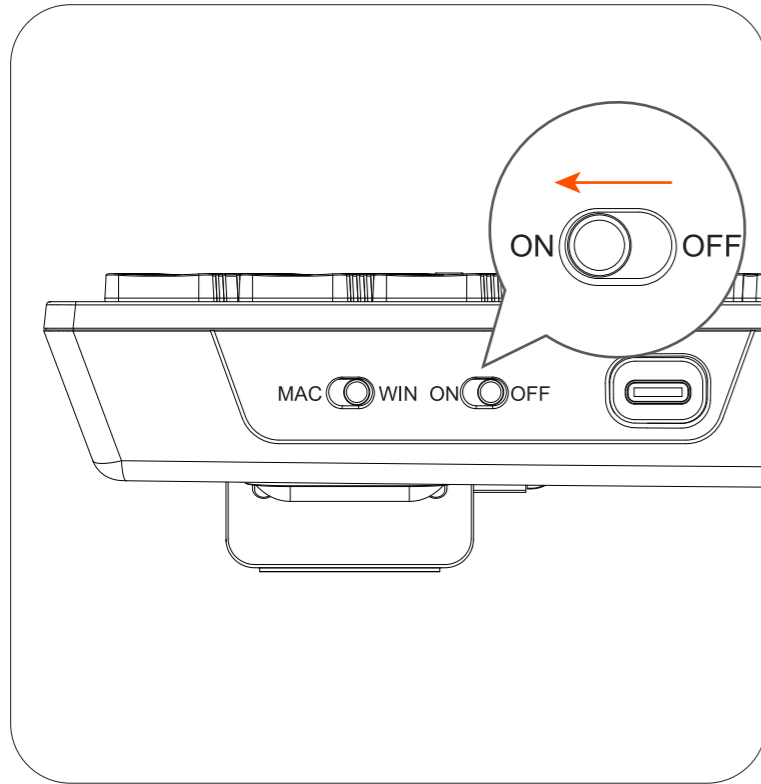
Find the device named Meetion_K-B_BT1 and click on Add Pairing



Paired successfully

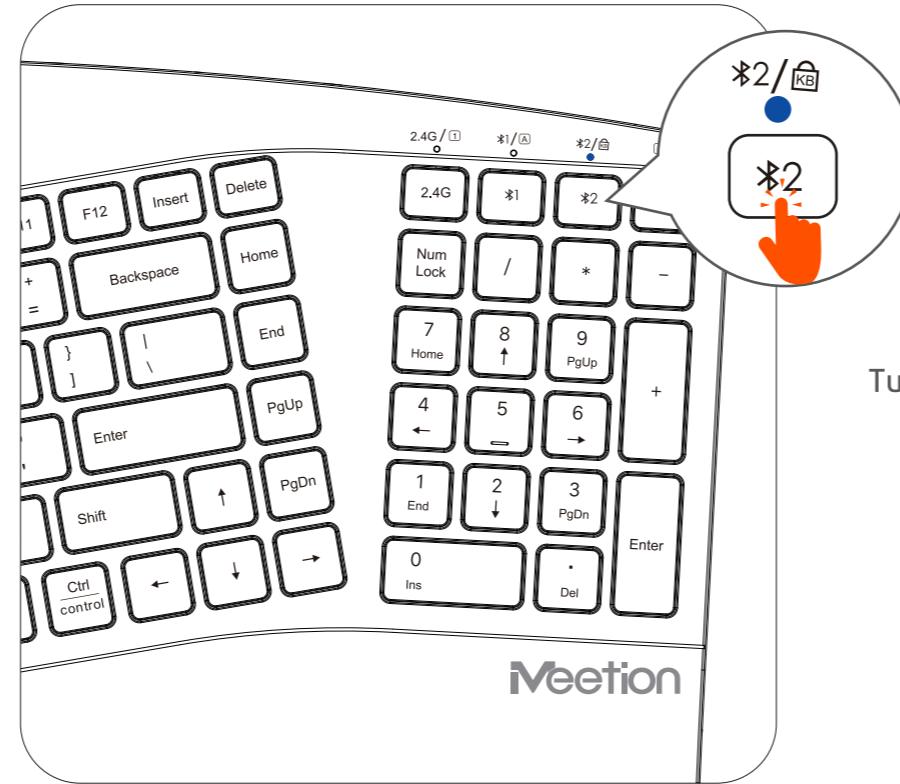
BLUETOOTH CONNECTION(KEYBOARD) 2

1



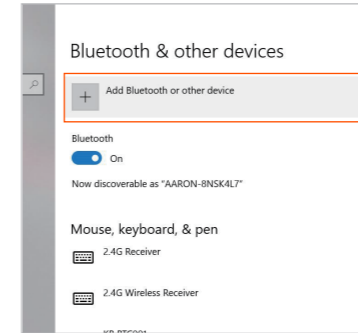
Turn on the keyboard power switch

2

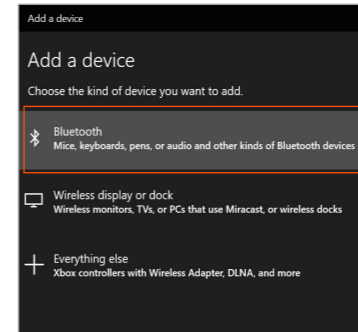


Click here to enter Bluetooth 2 mode pairing, blue light flashing

3

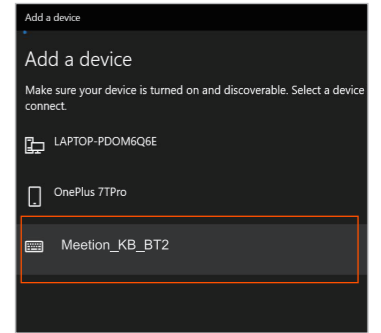


Turn on the computer Bluetooth switch to enter the Bluetooth settings page

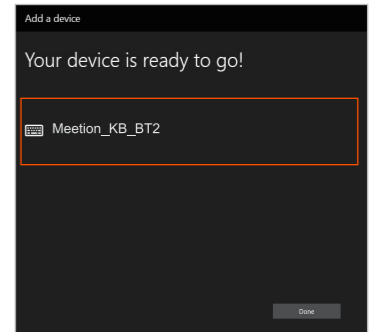


Click to add Bluetooth or other devices, click to add Bluetooth mouse, keyboard, and other devices

4



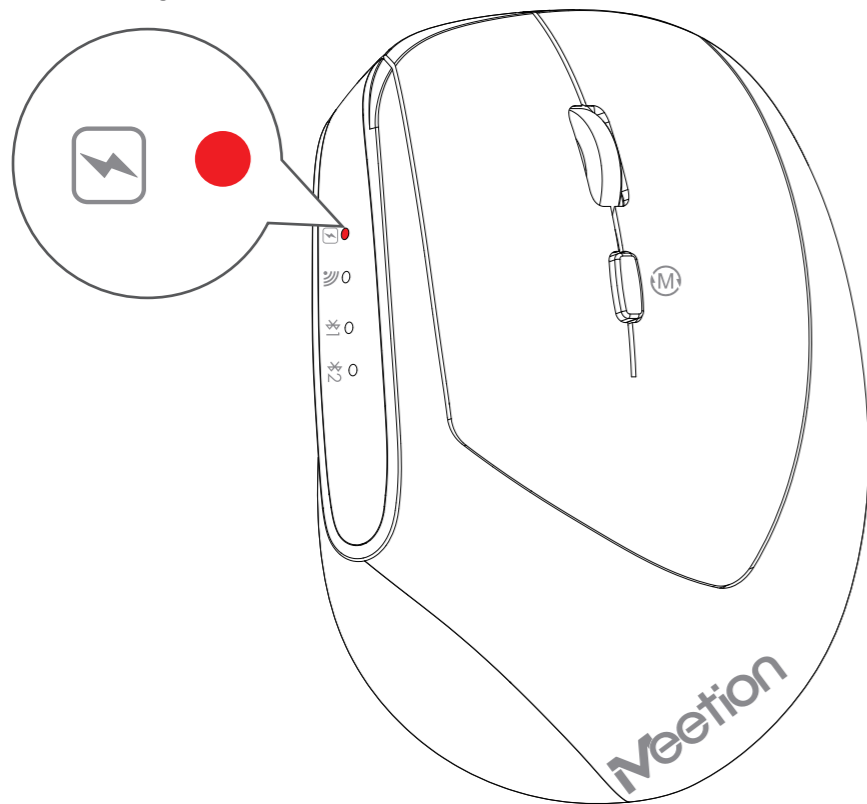
Find the device named Meetion_K-B_BT2 and click on Add Pairing



Paired successfully

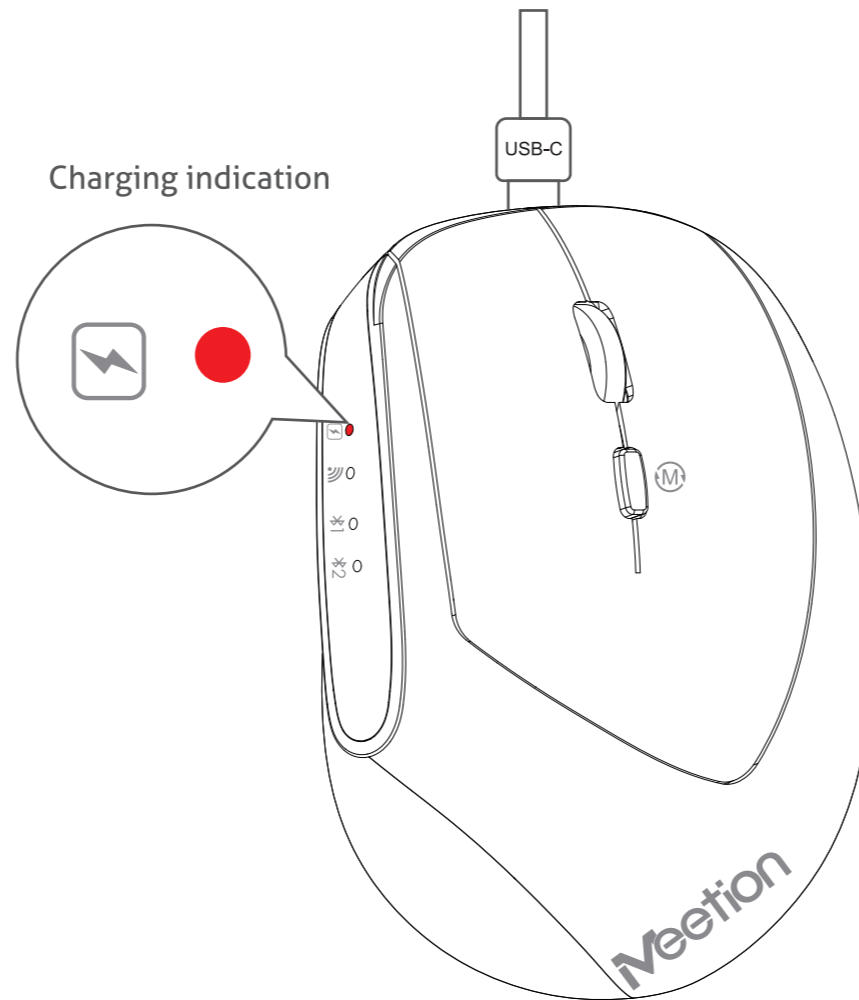
CHARGE INDICATION (MOUSE):

low battery indicator



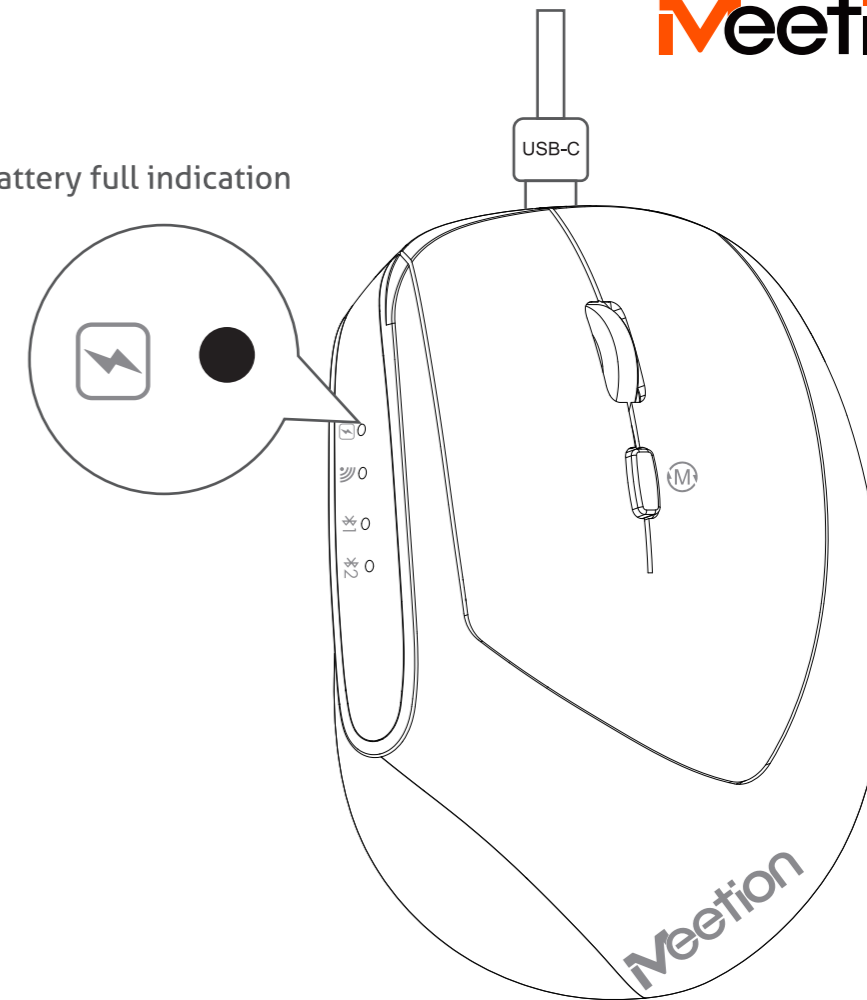
This red light is blinking, the battery is low

Charging indication



This red light is always on, the battery is charging

Battery full indication

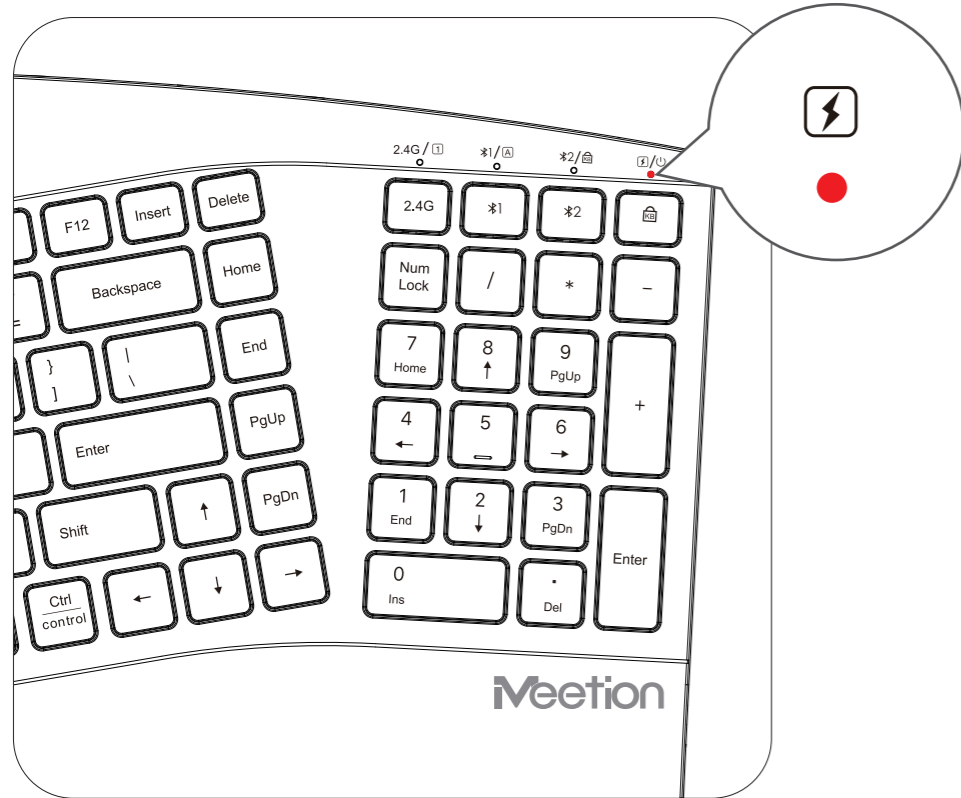


Red light is off, battery is fully charged

NOTE: The charging voltage should not exceed 5V, otherwise the product circuit will be damaged.

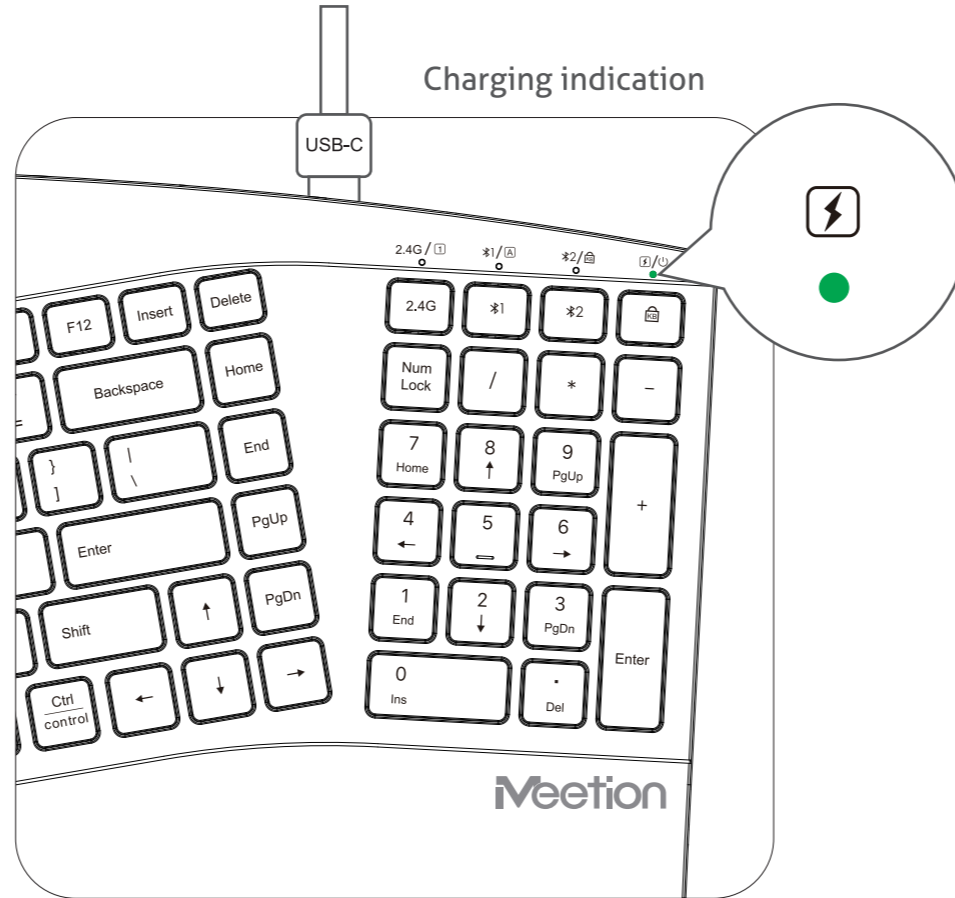
CHARGE INDICATION (KEYBOARD):

low battery indicator



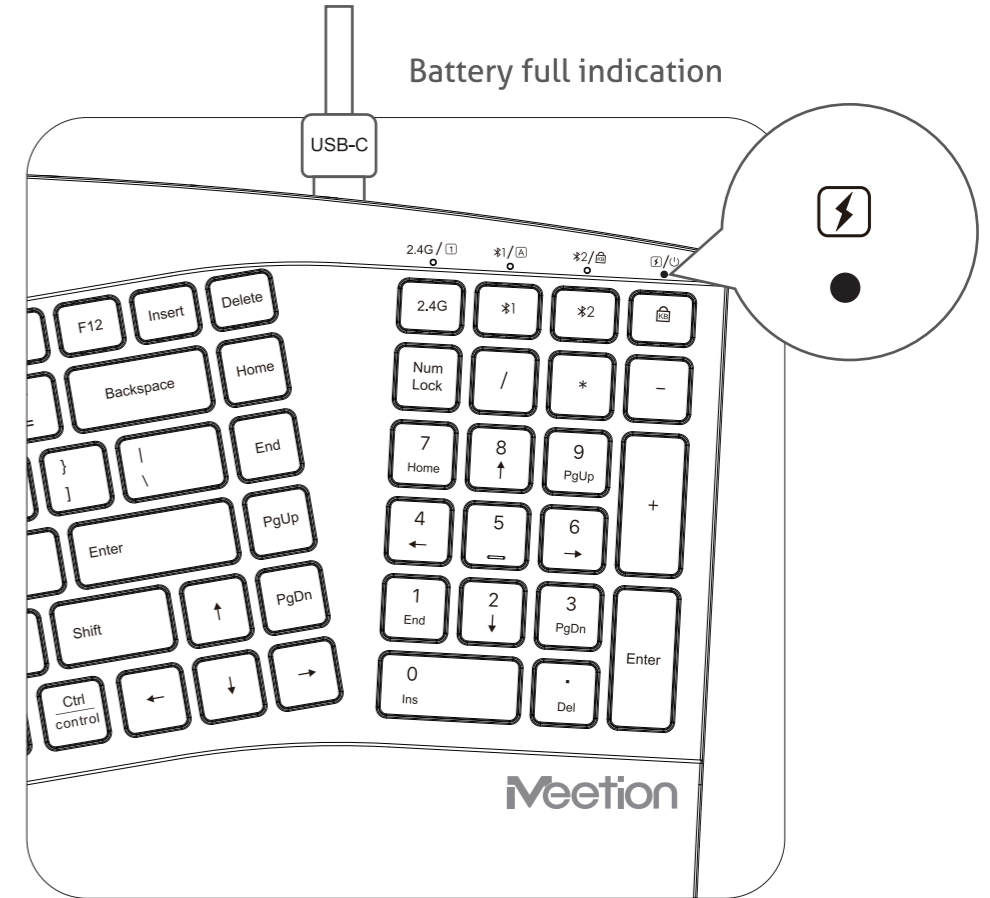
This red light is blinking, the battery is low

Charging indication



This green light is always on, the battery is charging

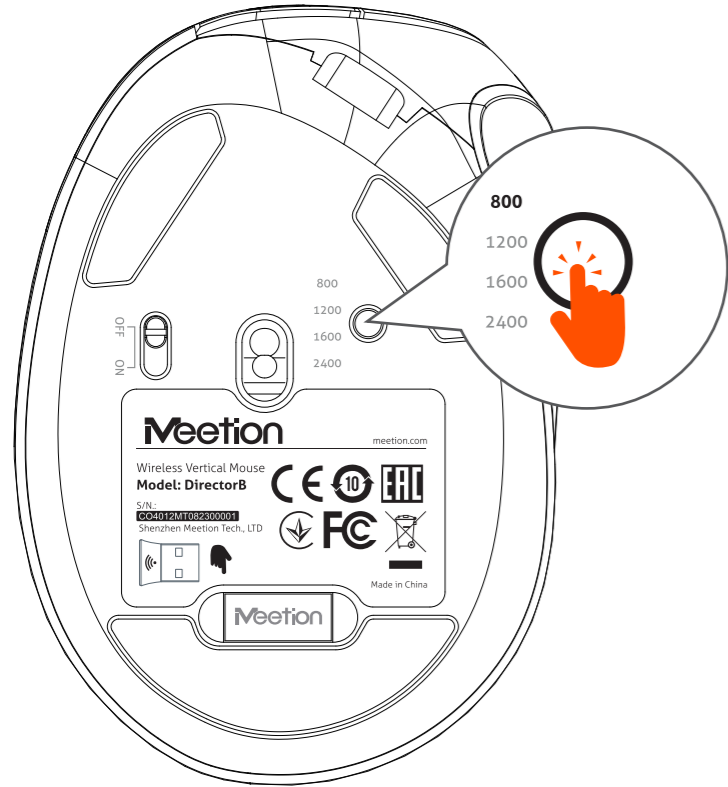
Battery full indication



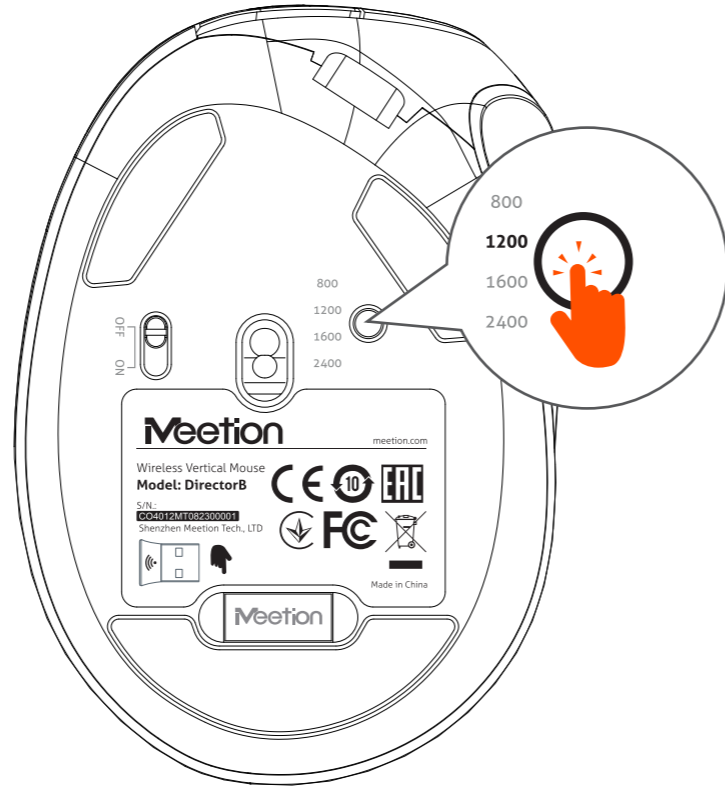
The green light is off, the battery is fully charged

NOTE: The charging voltage should not exceed 5V, otherwise the product circuit will be damaged.

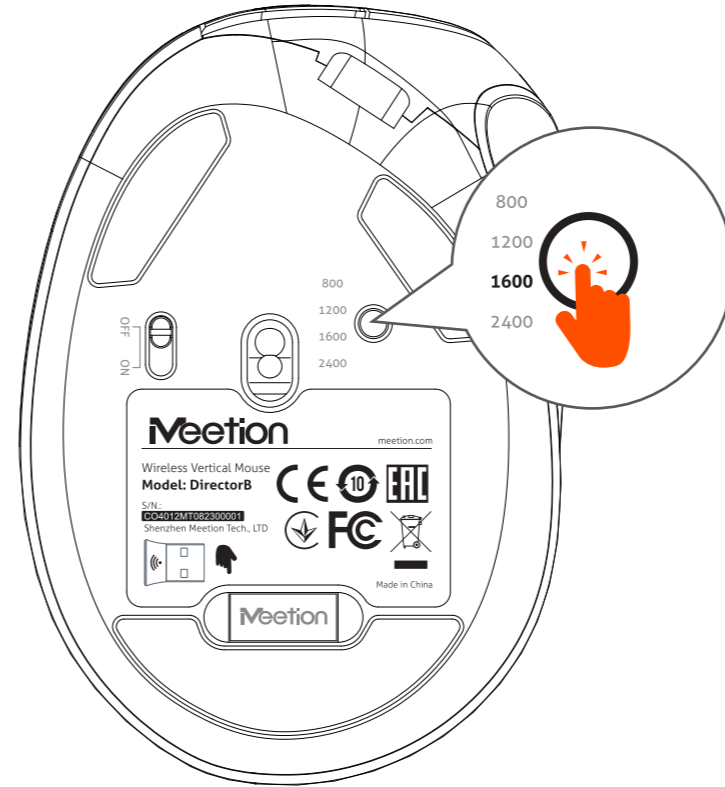
DPI ADJUSTMENT (MOUSE):



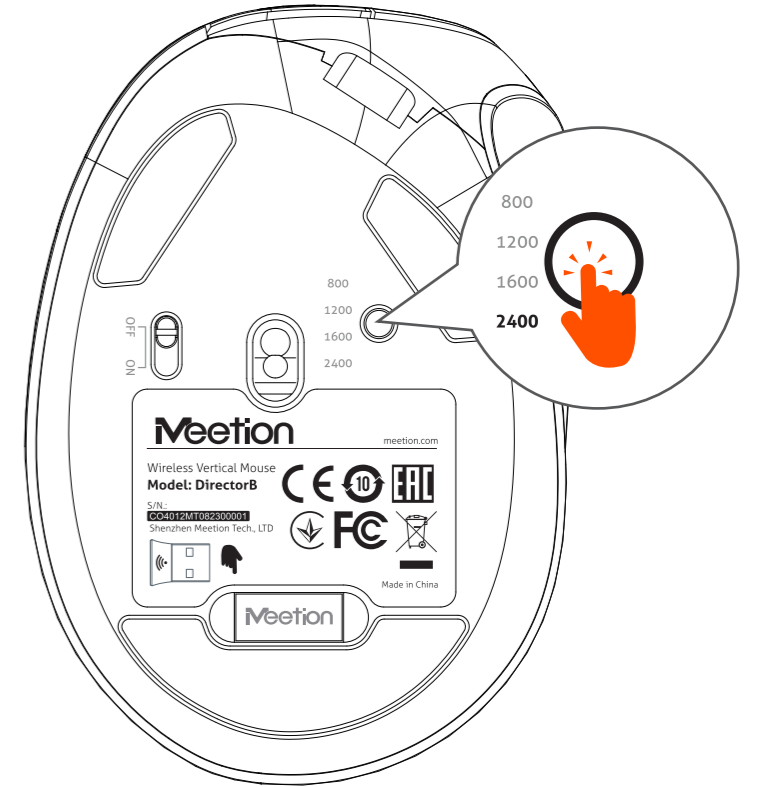
Press the DPI button once, 800 DPI
(slow cursor movement)



Press the DPI button again, 1200 DPI
(cursor moves moderately)



Press the DPI button again for 1600 DPI
(faster cursor movement)



Press the DPI button again for 2400 DPI
(fastest cursor movement)

GENERAL

All products under the MEETION brand comply with the US FCC standards with FCC ID: 2A706. The product is made in accordance with RoHS standard.

PRECAUTIONS

1. This product contains a rechargeable lithium battery.
 - (1) Do not dismantle, strike, crush, or put it into a fire.
 - (2) Stop using it immediately if severe swelling occurs.
 - (3) Do not place it in a high-temperature environment.
2. Do not use this device near water.
3. Only use a dry cloth to clean this product.
4. Please follow the manufacturer's instructions for use.
5. If the device is damaged, for example, if liquid enters it, if it gets wet in the rain or becomes damp, or if it cannot operate normally, it must be repaired. For repair matters, it should be entrusted to qualified maintenance personnel.

KIND TIPS

If the product is not in use for a long time, it is recommended to charge it every three months to activate the lithium battery inside the product and prevent battery failure due to long periods of non-use.

WARRANTY CARD

Model No. 型号		
Date of Sale 购买日期		
Seller 销售商		
Serial Number 序列号		
Address of the Seller 销售商地址		
Phone of the Seller 销售商电话		
Seller Signature & Stamp 销售商签字盖章		
<div style="border: 1px dashed black; border-radius: 50%; width: 30px; height: 30px; display: flex; align-items: center; justify-content: center;">Stamp</div>		
To be Filled in by Service Center 以下由服务中心填写		
Date of Receipt 收货日期	Date of Receipt 收货日期	Date of Receipt 收货日期
Date of Return 返回日期	Date of Return 返回日期	Date of Return 返回日期
Special Marks 特殊记录	Special Marks 特殊记录	Special Marks 特殊记录



TECHNICAL SUPPORT

Having technical problems with this product?

Send an email to service@meetion.com

For more information please visit:

www.meetion.com