



广州达意隆包装机械股份有限公司
Tech-Long Packaging Machinery Ltd

如欲了解更多达意隆产品，欢迎访问我们的网站

For more detailed information on Tech-Long products, please visit our website at:

www.tech-long.com.

本资料的内容会因产品更新而变化，欲了解详情，请与我们的销售人员联系。本资料虽然经过多次校对，以求准确，但仅供参考使用。一切以实物及产品铭牌和说明书为准。

Tech-long keeps working on further development of our products. Thus, for latest details, please contact our sales staff. Although information in this manual has been updated many times for accuracy, we recommend it is used for reference purpose only. The practical devices, nameplate, and specification prevail.

股票代码 (Stock Code): 002209

Printed in China 08/2010

广州总部—生产基地
Headquarter (Guangzhou)—Manufacturing base

广州市云埔工业区云埔一路23号
No.23 Yunpu 1 Road Yunpu Industrial Zone,Guangzhou
电话 Tel : (0086 20) 62956888-116
传真 Fax: (0086 20) 82266913
E-mail: market@tech-long.com

上海代表处
Shanghai Office

上海市闵行区莘建东路58弄绿地科技岛3号楼1011室
Rm 1101,3rd building,Green land technology island,58th
lane,Zijian Dong Road,Min Hang District,Shanghai
电话 Tel: (0086 21) 51179162
传真 Fax: (0086 21) 51179160

成都代表处
Chengdu Office

成都市二环路南三段15号天华大厦A座905室
Rm 905 Tower A Tian Hua Building No.15 Nan
San Duan Er Huan Road,Chengdu
电话 Tel: (0086 28) 66035128
传真 Fax: (0086 28) 85120486

达意隆配件服务部专刊

TECH-LONG SPARE PARTS SERVICE

目|录|Index



概|述 Company introduction

简介及架构图 Profile and Structure Chart 01-02

我们是最优秀的团队 We are the best! 03

配件订购流程 How to Order Spare Parts 04

机加检测 Machining testing 05



产|品|介|绍 Product Overview

灌装设备配件系列 Filling Machine Parts Series 07-10

吹瓶设备配件系列 Blowing Machine Parts Series 11-13

水处理和前处理配件系列
Water Treatment and Pretreatment Parts Series 14-15

包装设备与输送系统配件系列
Packing Machine and Conveyor System Parts Series 16-17

简介及架构图

Profile and Structure Chart

配件服务部成立于2009年10月，为营销总部下属特设部门。我们有四支优质高效的管理团队专门为客户提供配件咨询、配件销售、工程改造大修方案等全方位服务。配备的500m²超大备件仓库能将货期缩至最短，彻底解决您的后顾之忧。

此外，我们有强大的研发中心与一流的加工中心做后盾，能为客户进行技术革新，同时也可满足客户的特殊需求，真正实现“以顾客为导向”的企业核心价值观，集中部门优势与条件充分为客户诠释“为你而转”的思想理念。

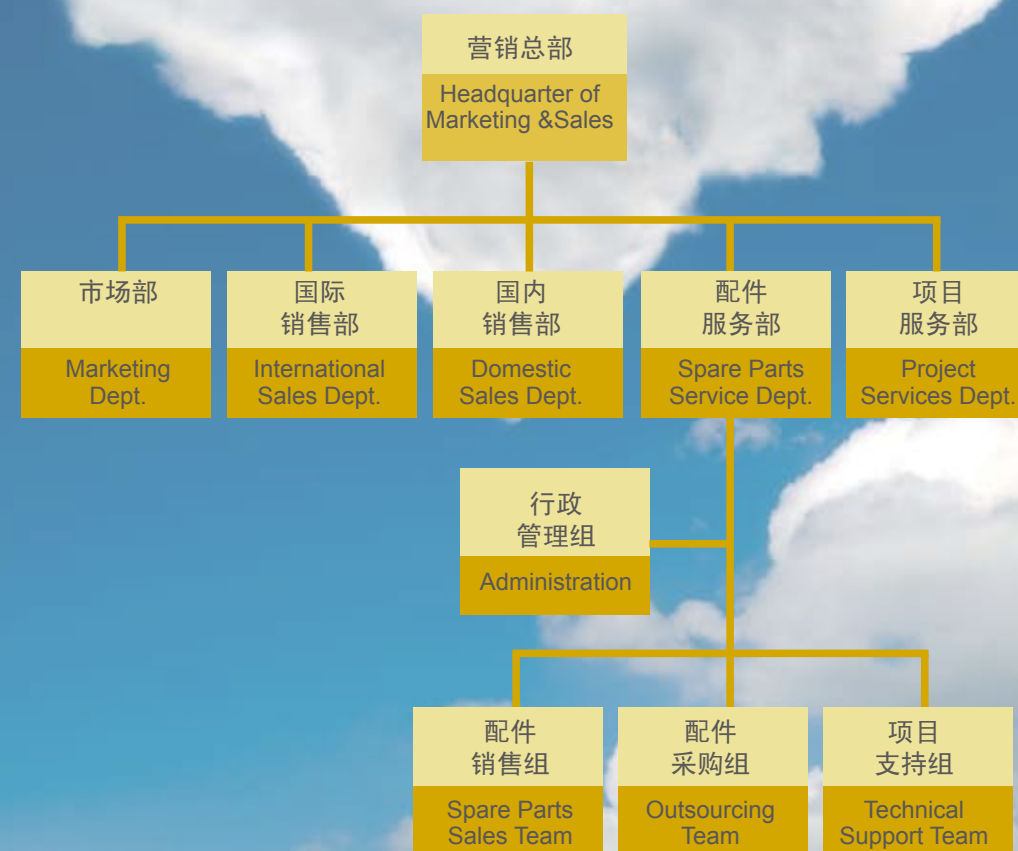
TECH-LONG Spare Part Service Department is a newly-born force in October 2009, affiliated to Headquarter of Marketing and Sales. We have four efficient management teams to provide complete solution involving spare part inquiry, spare part sales as well as technical support of project retrofit. We set up a new independent large-scale storehouse which occupies over 500 sq km to shorten the delivery timing and ravel out your concerns.

With the great support of our R&D center and CNC center, holding the core value of “customer-oriented”, we supply not only technical innovation but also specific solution to meet different demand. We will take advantage of our rich resources to fully interpret our business philosophy of “Runs for you”.

我们保证——我们的配件是最精良的！
我们相信——我们的价格是最公道的！
我们承诺——我们的服务是最优质的！

We promise our parts are the best!
We promise our prices are the lowest!
We promise our services are the greatest!

营销总部架构图 Structure Chart



我们是最优秀的团队

We are the best!



饮料包装机械的使用与人们的生活息息相关，关系到人们的健康，甚至生命安全，因此对相关配件的质量和精度都要求很高。如果把一台完整的设备比作一个完整的人，那么这小小的配件也就是人的五脏六腑。选择一个好的配件，不仅可以使设备正常运转、优化设备，延长设备的寿命，而且可以使您省时、省钱更省心。如何正确选购合格的配件，请致电或是致信我们，我们将免费给您提供产品咨询服务。

The use of beverage packaging machine is closely related to life of people. Therefore, it has extremely requirements to the machine part quality. If a complete machine compared to a human being, then the parts on the machine are the internal organs. A good part not only optimize your machine and prolong machine lifetime, but also enable you to save more money and save more time. How to choose qualified parts? Please contact us. We would like to provide product consulting service for free.

配件订购流程

How to Order Spare Parts

广州达意隆包装机械股份有限公司 TECHLONG PACKAGING LTD 配件询价单 Inquiry				
设备序列号: Equipment series number:				
设备型号: Equipment model:				
客户名称: Company name				
联系人: Contact person				
联系方式: office number				
序号 Item	配件名称 Description	配件编码 Part code	数量 Quantity	需求时间 Expect to get the part

请填写好配件询价单，通过传真、邮件，或是直接致电联系我们。我们将会与配件销售人员和您联系！
 配件服务热线: +86 (0) 20-82266999
 配件服务传真: +86 (0) 20-82266909
 配件服务邮箱: service@tech-long.com

Please fill in the inquiry form and contact us. We will reply to you within 24 hours !
 Hotline: +86(0)20-82266999
 Fax : +86(0)20-82266909
 Email: service@tech-long.com



机加检测

Machining testing

先进的加工中心 Advanced machining center



机械加工设备一览 List of machining equipment

2.5M、3.5M、5M数控立车
2.5M,3.5M,5M vertical CNC lathe

8M×3M数控镗铣床（配3M×3M回转工作室）
8M×3M CNC boring-milling machine (matched with 3M×3M turning round workroom)

三菱龙门式五面体加工中心6M×4.2M
Mitsubishi pentahedron gantry type machining center 6M×4.2M

马扎克、德马吉卧式、立式加工中心、车削中心
Mazak, DMG horizontal, vertical machining center, turning center

马扎克、三菱二维、三维激光切割机
Mazak, Mitsubishi two-dimensional and three-dimensional laser cutting machine

完美的品质保证 Perfect quality guarantee



1. PET瓶检测中心 PET bottle testing center
2. SPECTROMAXX直读式光谱分析仪
SPECTROMAXX direct reading spectrometer
3. 配件仓库 Spare parts warehouse
4. PET瓶压力测试仪 PET bottom pressure tester
5. 三坐标测量仪
Three-coordinates measuring machine
6. 数字式投影仪 Digital projector

我們不僅能幫助您的
設備生產，而且能使
您的設備運轉更好！

产品介绍 Product Overview

灌装设备配件系列
Filling Machine Parts Series

吹瓶设备配件系列
Blowing Machine Parts Series

水处理和前处理配件系列
Water Treatment and Pretreatment Parts Series

包装设备与输送系统配件系列
Packing Machine and Conveyor System Parts Series

灌装设备配件系列

Filling Machine Parts Series

灌装设备配件系列

Filling Machine Parts Series



五加仑灌装阀
5 Gallon filling valve



酱油灌装专用阀
Soybean filling valve



灌装阀
Filling valve



压盖头
Capper chuck



精密旋盖头
Capping head



接近开关
Proximity switch



日化产品灌装阀
Daily chemical filling valve



五加仑灌装阀
5 gallon filling valve



固瓶杯
Fixed cup



小万向扳手
Universal wrench



下喷头
Spraying nozzle



同步轮
Synchronization gear



含汽灌装阀
CSD filling valve



五加仑气动换向阀
Pneumatic change valve



灌装阀
Filling valve



304止回阀
Non-return valve



电磁阀
Solenoid valve



压力保护制
Pressure protective block



直线轴承
Bearing, plastic



热灌装
Hot filling valve



夹瓶手指
Gripper



卡瓶板
Chuck plate



洗瓶夹
Rinser gripper



上喷嘴
Upper sprayer



曲线滚轮
Roller



外洗机毛刷
External brush



滤膜
Filter element

灌装设备配件系列

Filling Machine Parts Series

灌装设备配件系列

Filling Machine Parts Series



塑料齿轮
Plastic gear



光电开关（有瓶检测）
Photocell switch



固瓶杯
Fixed cup



定位套
Position seat



瓶型替换件
Changeover parts



加热器
Heater



U型加热管
U-heating tube



行程开关
Travel switch



液位开关
Level switch



可编程控制器
PLC



夹瓶块
Bottle block



开关量扩展单元
Extending unit



非面板式压力表
Manometer



PT100铂热电阻
Thermal resistance



液位计
Level switch



压盖链
Cap chute



走轨体
Cam follower



分水尼龙盘
Nylon discs



传动轴
Driving shaft



齿轮轴套
Spindle sleeve



单点浮球式液位开关
Level switch



法兰轴承
Flange bearing



齿轮
Gear



压力开关
Pressure switch



密封垫
Seal gasket



套环
Plastic ring



链轮
Sprocket wheel



底部毛刷
Brush, bottom



拨块
Tilting block

吹瓶设备配件系列

Blowing Machine Parts Series

吹瓶设备配件系列

Blowing Machine Parts Series



模架
Bottle mold



加温头
Warming head



加温头组件
Warming head assembly



行程开关
Travel switch



三通缩径不锈钢气控球阀
T-way reducing valve



安全开关
Safety switch



摆动支承轴
Support shaft



机械夹手
Rotary Manipulator



机械手组件
Manipulator



夹手
Gripper



电磁阀底座
Solenoid valve holder



光电开关
Photocell switch



气控调节阀
Pneumatic valve



油量分配器
Oil distributor



数字量IO模块
Digital module



封口汽缸
Sealing cylinder



限位块
Position block



漫反射光电开关
Diffuse Reflection photocell switch



轴
shaft



压缩空气过滤器
Air filter



FSC小型侧装式浮球开关
Float-ball switch



升降支架
Elevating bracket



底模锁紧机构
Lock device, bottle mold



拉伸部位组件
Bottle stretching parts



高压增压阀
Pressure valve



集流环
Ring manifold



接近开关
Proximity switch



电机启动模块
Motor start module



封口装置
Sealing device

吹瓶设备配件系列

Blowing Machine Parts Series



高压基本阀组
Basic valve assembly



基本单元
Basic unit



单向阀
Single-way valve



动模中套
Sheath of moving mould



中载荷重弹簧
Load spring



方向阀
Position valve



封口气缸
Sealing valve



气缸总成
Cylinder assembly



压力表
Manometer



厚钛臭氧喷盘
Ozone plate



液位开关
Level switch



压力表
Manometer



浮子流量计
Flow meter



电导率
Conductivity meter



流量表
Flowmeter



臭氧分配器9寸
Ozone tube



PH探头
PH probe



计量泵(带四功能阀)
Measurement pump



PP喷溶滤芯
Filter element



PH表前置放大器
Amplifier



过滤器(含滤芯)
Filter

水处理和前处理配件系列

Water Treatment and Pretreatment Parts Series



电导率仪
Conductivity meter



温度计
Thermometer



板式换热器
Heat exchanger



比例角阀
Proportional valve



音叉液位开关
Level switch

包装设备与输送系统配件系列

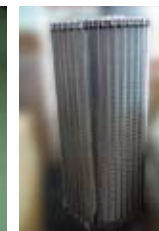
Packing Machine and Conveyor System Parts Series



U型发热管
U-type heating tube



风轮
Blowing fan



输送网链
Net chain



左右夹爪
Left & right gripper



切膜刀片
Blade



包胶滚筒
Rubber coated roller



气胀轴内胆
Air inflation pipe



不锈钢叶轮
Impeller



链条
links



齿轮
gear wheel



传动轮
link wheel



直链主动轮
Driving wheel



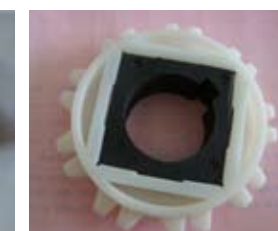
转块
Rotating blocks



连杆
connecting rods



拨爪
finger



网链轮
Net chain wheel

包装设备与输送系统配件系列

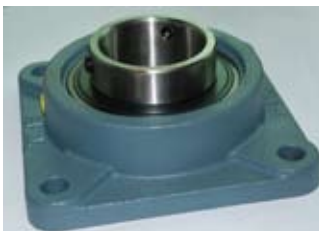
Packing Machine and Conveyor System Parts Series



带菱形座外球面轴承
Ball bearing with seat



网链
Net chain



轴承
Bearing



关节轴承
Joint bearing



链轮
Sprocket



光电开关及反射板
Photocell switch



弯链主动轮
Driving wheel



主动轮
Driving wheel



带座轴承
Bearing with seat



钢丝挂角安装盘
Hook fixer



拖链
Chain



弯链从动轮
Driven wheel



链活节
Joint



不锈钢链板
SS chain



190钢质链
Chain



塑料弯链板
Plastic chain, bend

我们倾听您的声音

From your voice we are always willing to listen to



1 您是否购买过达意隆的配件?

1 Have you ever bought the spare parts from TECHLONG?

2 您对我们配件的价格、货期和质量有什么意见?

2 Do you have any suggestions for the prices, delivery timing and product quality?

3 您对我们配件服务部的总体评价是:

3 Please give us your comments on our services.

请选择: 优、良、一般、差

Choose an option: Excellent, Good, Normal, Bad.



再次感谢您的宝贵意见和宝贵时间!

Your feedback is valuable input and we appreciate that you take the time to send us your comments.

配件服务热线/Hotline: +86(0)20-82266999

配件服务传真/Fax: +86(0)20-82266909

配件服务邮箱/Email: service@tech-long.com

领跑，路更宽

Leading To A Broader Way

