

LED PENDANT LIGHT

GE-09010 | 09011 | 09012

GREEN EARTH



Version NO.V1.1

APPLICATION

We offer a clean simple design for hotel lighting and a variety of architectural area lighting applications.
The pendant are exquisite in appearance and bright in lighting;
Widely used in living rooms, restaurants, bars, etc.

FEATURES

- * Adjustable cable length.
- * Driver concealed within canopy.
- * Different CRI : ≥Ra80, ≥Ra90, ≥Ra94.
- * Different finishes: Colorful plating, Blue plating, transparent or custom color.
- * Thin powered aircraft cable provides an ultra-clean look.
- * Passive machined aluminum heatsink for optimal thermal management.
- * UGR<15.
- * 0.063 high purity aluminum.
- * 3 step MacAdam Ellipse binning LED Source.
- * Double reflector anti-glare design.
- * LED module is upgradable and interchangeable for ease of maintenance.

Certification

EMC/LVD/RoHS

Warranty

Default is 3 years . 5 Years warranty is optional.

CODE COMPLIANCE

ARRA Compliant. Manufactured and tested to UL standards No. 1598/8750.

SPECIFICATION

Model Number	Input Volt	Power	Luminous Flux(LM)	Beam Angle	CCT	Color Rendering	IP	Lifetime
GE-09010	AC220-240V	5W±10%	≥300LM	120°	3000K 4000K	Ra.80 Ra.90 Ra.94	IP20	50,000 hrs
GE-09011								
GE-09012								

1 Nominal Source Lumens at 4000K 2 Nominal Delivered Lumens at 4000K 3 Contact Factory for Additional Options
4 See Mounting Page for Details on Components and Finishes 5 Contact Factory for Special Finishes
Actual performance may differ as a result of end-user environment and application. All values are design or typical values, measured under laboratory conditions at 25°C. Specification subject to change without notice.

ORDERING INFORMATION

GE-09010-5W-113-L27K80CC

Brand Name	Series	Number	Power	Size	Voltage	CCT	CRI	Finish
GE	09	010	5W	113	L	27K	80	CC
GreenEarth	05: Downlight 06: Bean Pot Light 07: Track Light 08: Panel Light 09: Pendant Light 10: Mirror Light 17: Wall Light	/	5Watt	ø113mm	H: High Voltage Direct Drive AC230V L: AC220-240V M: DC24V A: AC100-120V B: AC100-240V C: AC100-277V D: AC85-265V E: AC100-305V F: AC347-480V AD: AC100-120V With Dimmable BD: AC100-120V With Dimmable CD: AC100-120V With Dimmable DD: AC85-265V With Dimmable ED: AC100-305V With Dimmable FD: AC347-480V With Dimmable	27K=2700K 30K=3000K 35K=3500K 40K=4000K 50K=5000K 57K=5700K 65K=6500K	70=CRI70 80=CRI80 90=CRI90 93=CRI93 95=CRI95 97=CRI97 98=CRI98	WH=White / BL=Black / GD=Gold / SL=Silver MW=Matte White / PT=Platinum / BZ=Bronze MB=Matte Black / MS=Matte Silver AO=Anodic Oxidation / NI=Nickle / Nিকেলে Plated CR=Chrome/Polished Chrome OB=Oil Rubbed Bronze / WP=White Powder Coated BP=Black Powder Coated / BEP=Blue plating SC=SATIN CHROME SP=Silver Powder Coated / SN=SATIN NICKEL SS=Stainless Steel / PA=Polished Aluminum PBN=POLISHED BRUSHED NICKLE PBC=POLISHED BRUSHED CHROME BA=BRUSHED Aluminum / BN=BRUSHED NICKEL BC=BRUSHED CHROME / CC=Custom Color CP=Colorful plating / TR=Colorful platin



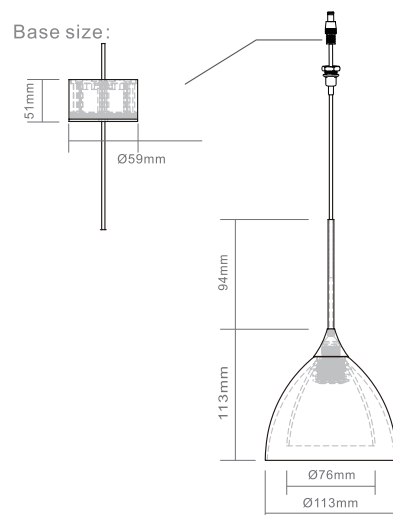
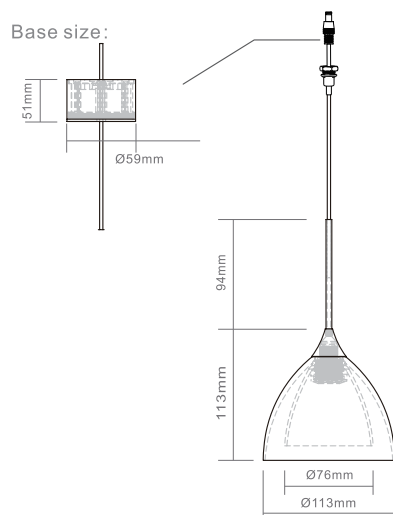
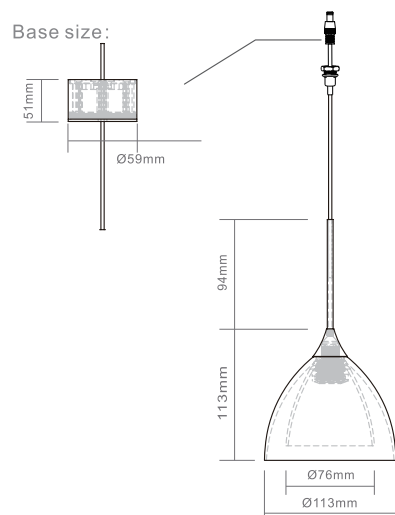
GE-09010-5W-113-L



GE-09011-5W-113-L



GE-09012-5W-113-L



FINISHING COLOR



Color plating
+Glass



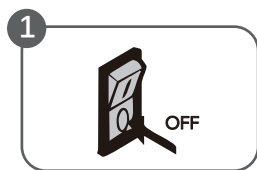
Lace+Glass



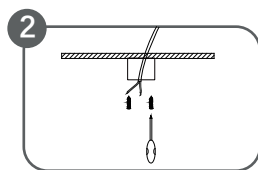
transparent
+Glass

INSTALLATION

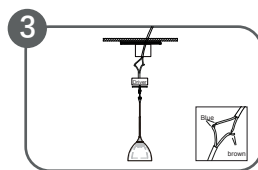
GREEN EARTH



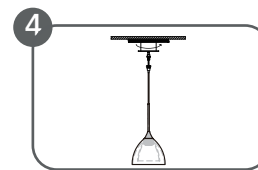
Turn off the power



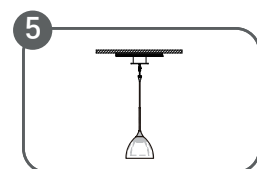
Secure the junction box to the ceiling using screws



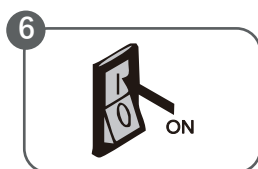
Connect the AC wires and Driver's Input wires



Rotate the mounting back plate into the junction box.



Completed



Turn on the power

* Note: when installing the luminaire, it must be determined that the circuit has been disconnected.

PACKAGE

PACKAGE DIMENSION

Item	Size of Carton (L*W*H)(mm/in)	Net Weight/Pcs(kg/lbs)	Gross Weight/Carton(kg/lbs)
GE-09010	265*225*575 / 10.43*8.86*22.64	0.42 / 0.93	3.63 / 8.00
GE-09011			
GE-09012			

PACKAGE INFORMATION

Item	Qty/Carton	Container(Pcs)		
		20'GP	40'GP	40'HQ
GE-09010	3	2775	5571	6330
GE-09011				
GE-09012				

1. Installed by professionals, please do not miss or replace the parts of the lamp during installation.
2. Do not get too close to the heating element, in case of dangerous.
3. Do not use chemicals to clean the lamp. Chemicals such as trichloroethylene, acetone etc. may damage the colloidal surface and cause fading.
4. Do not change the structure and parts of the lamp. If any broken, please let professionals to handle of it.