

LED DOWN LIGHT

GE-05030 | 05031 | 05033 | 05037

GREEN EARTH



APPLICATION

LED downlight light source is energy-saving and environment-friendly, no UV light, widely used in indoor lighting of shopping malls, offices, factories, hospitals, etc.

FEATURES

- * Power: 5W, 8W, 12W.
- * Overall sizes: $\varnothing 59 \times 70$ mm, $\varnothing 59 \times 111$ mm, $\varnothing 59 \times 119$ mm, $\varnothing 89 \times 120$ mm.
- * Dimmable is optional.
- * Beam angle 15°, 30°, 36°, 37°, 40°, 60°.
- * Dimming is optional.
- * CRI \geq 80 are available.
- * COB module is upgradable and interchangeable for ease of maintenance.

Certification

EMC/LVD/RoHS

Warranty

Default is 3 years . 5 Years warranty is optional.

CODE COMPLIANCE

ARRA Compliant. Manufactured and tested to UL standards No. 1598/8750.



Version NO.V1.1

SPECIFICATION

Model Number	Input Volt	Power(W)	Luminous Flux(LM)	Beam Angle	CCT	Color Rendering	IP	Lifetime
GE-05030	AC230V	5/8	350/550	30°	2700K-6500K	\geq Ra.80	IP20	50,000 hrs
GE-05031		8	550	15° /36°/37°/ 60°				
GE-05033		12	900	40°				
GE-05037								

1 Nominal Source Lumens at 4000K 2 Nominal Delivered Lumens at 4000K 3 Contact Factory for Additional Options

4 See Mounting Page for Details on Components and Finishes 5 Contact Factory for Special Finishes

Actual performance may differ as a result of end-user environment and application. All values are design or typical values,measured under laboratory conditions at 25°C. Specification subject to change without notice.

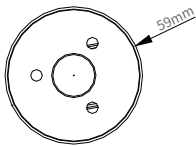
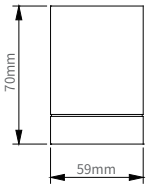
ORDERING INFORMATION

GE-05030-5W-5970-H27K80WH

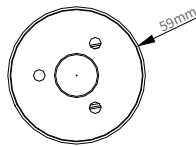
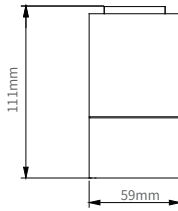
Brand Name	Series	Number	Power	Size	Voltage	CCT	CRI	Finish
GE	05	030	5W	5970	H	27K	80	WH
GreenEarth	05: Downlight 06: Bean Pot Light 07: Track Light 08: Panel Light 09: Pendant Light 10: Mirror Light 17: Wall Light	/	8Watt	$\varnothing 59$ mm H:70mm	H: High Voltage Direct Drive AC230V L:AC220-240V M:DC24V A:AC100-120V B:AC100-240V C:AC100-277V D:AC85-265V E:AC100-305V F:AC347-480V AD:AC100-120V With Dimmable BD:AC100-120V With Dimmable CD:AC100-120V With Dimmable DD:AC85-265V With Dimmable ED:AC100-305V With Dimmable FD:AC347-480V With Dimmable	27K=2700K 30K=3000K 35K=3500K 40K=4000K 50K=5000K 57K=5700K 65K=6500K	70=CRI70 80=CRI80 90=CRI90 93=CRI93 95=CRI95 97=CRI97 98=CRI98	WH=White / BL=Black / GD=Gold / SL=Silver MW=Matte White / PT=Platinum / BZ=Bronze MB=Matte Black / MS=Matte Silver AO=Anodic Oxidation / NI=Nickle / Nickele Plated CR=Chrome/Polished Chrome OB=Oil Rubbed Bronze / WP=White Powder Coated BP=Black Powder Coated / BEP=Blue plating SC=SATIN CHROME SP=Silver Powder Coated / SN=SATIN NICKEL SS=Stainless Steel / PA=Polished Aluminum PBN=POLISHED BRUSHED NICKLE PBC=POLISHED BRUSHED CHROME BA=BRUSHED Aluminum / BN=BRUSHED NICKEL BC=BRUSHED CHROME / CC=Custom Color CP=Colorful plating / TR=Colorful platin



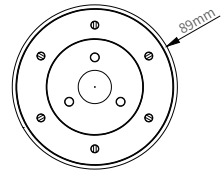
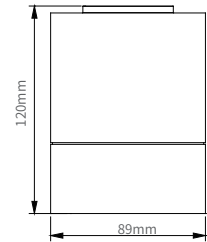
GE-05030-5W-5970-L



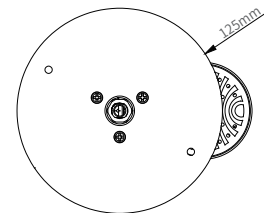
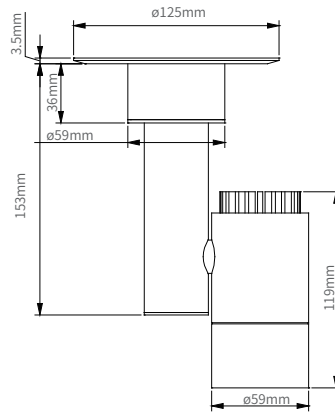
GE-05031-8W-59111-H



GE-05037-12W-89120-L



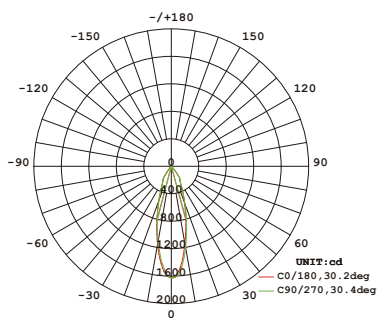
GE-05033-8W-59119-H



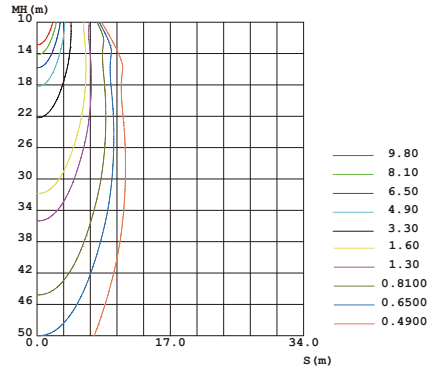
IES

37° 8W 3000K
GE-05031-8W-59111-H

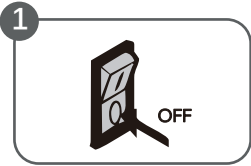
LUMINOUS INTENSITY DISTRIBUTION DIAGRAM



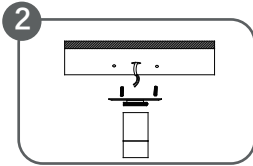
C0 PLANE ISOLUX DIAGRAM (UNIT:lx)



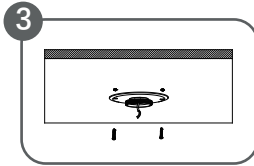
INSTALLATION



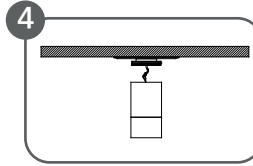
Turn off the power



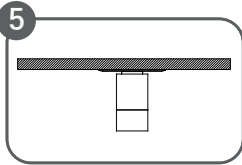
Separated the back cover from the lamp body



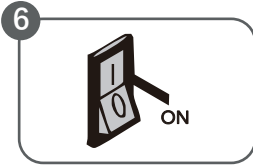
Fixed lamp body back cover



Tighten the lamp body and back cover



Completed



Turn on the power

* Note: when installing the luminaire, it must be determined that the circuit has been disconnected.

PACKAGE

PACKAGE DIMENSION

Item	Size of Carton (L*W*H)(mm/in)	Net Weight/Pcs(kg/lbs)	Gross Weight/Carton(kg/lbs)
GE-05030-5W-5970-L	530*220*575 / 20.87*8.66*20.64	0.37 / 0.82	11.2 / 24.69
GE-05031-8W-59111-H	545*365*555 / 21.46*14.37*21.85	0.29 / 0.64	16.65 / 36.71
GE-05033-8W-59119-H	545*365*555 / 21.46*14.37*21.85	0.56 / 1.23	22.0 / 48.50
GE-05037-12W-89120-L	670*280*370 / 26.38*11.02*14.57	0.80 / 1.76	18.6 / 41.00

PACKAGE INFORMATION

Item	Qty/Carton	Container(Pcs)		
		20'GP	40'GP	40'HQ
GE-05030-5W-5970-L	50	23700	47750	54700
GE-05031-8W-59111-H	20	7040	14080	17280
GE-05033-8W-59119-H		7040	14080	17280
GE-05037-12W-89120-L		9020	18240	21280

1. Installed by professionals, please do not miss or replace the parts of the lamp during installation.
2. Do not get too close to the heating element, in case of dangerous.
3. Do not use chemicals to clean the lamp. Chemicals such as trichloroethylene, acetone etc. may damage the colloidal surface and cause fading.
4. Do not change the structure and parts of the lamp. If any broken, please let professionals to handle of it.